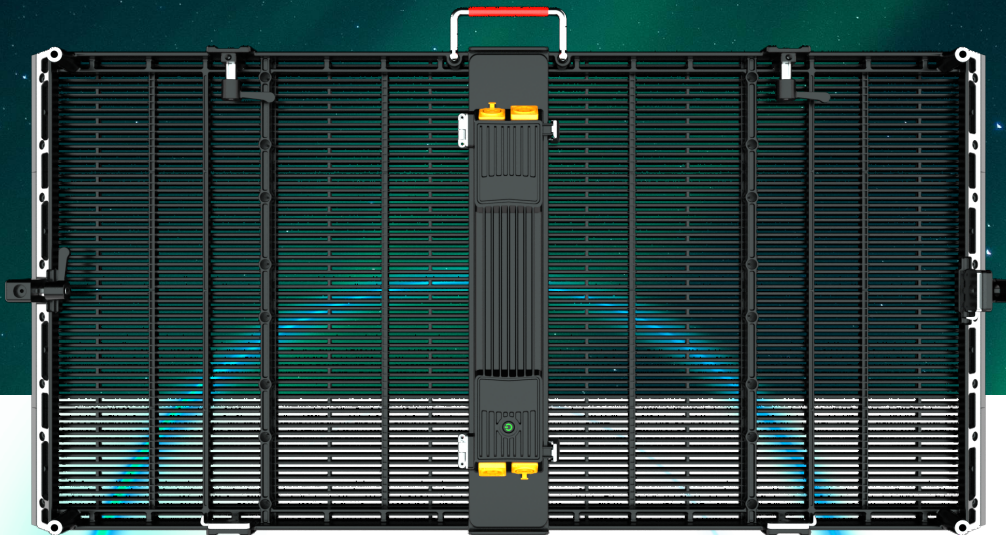


Essential Product
For Stage or Exhibition



Guidevisual G20 Series

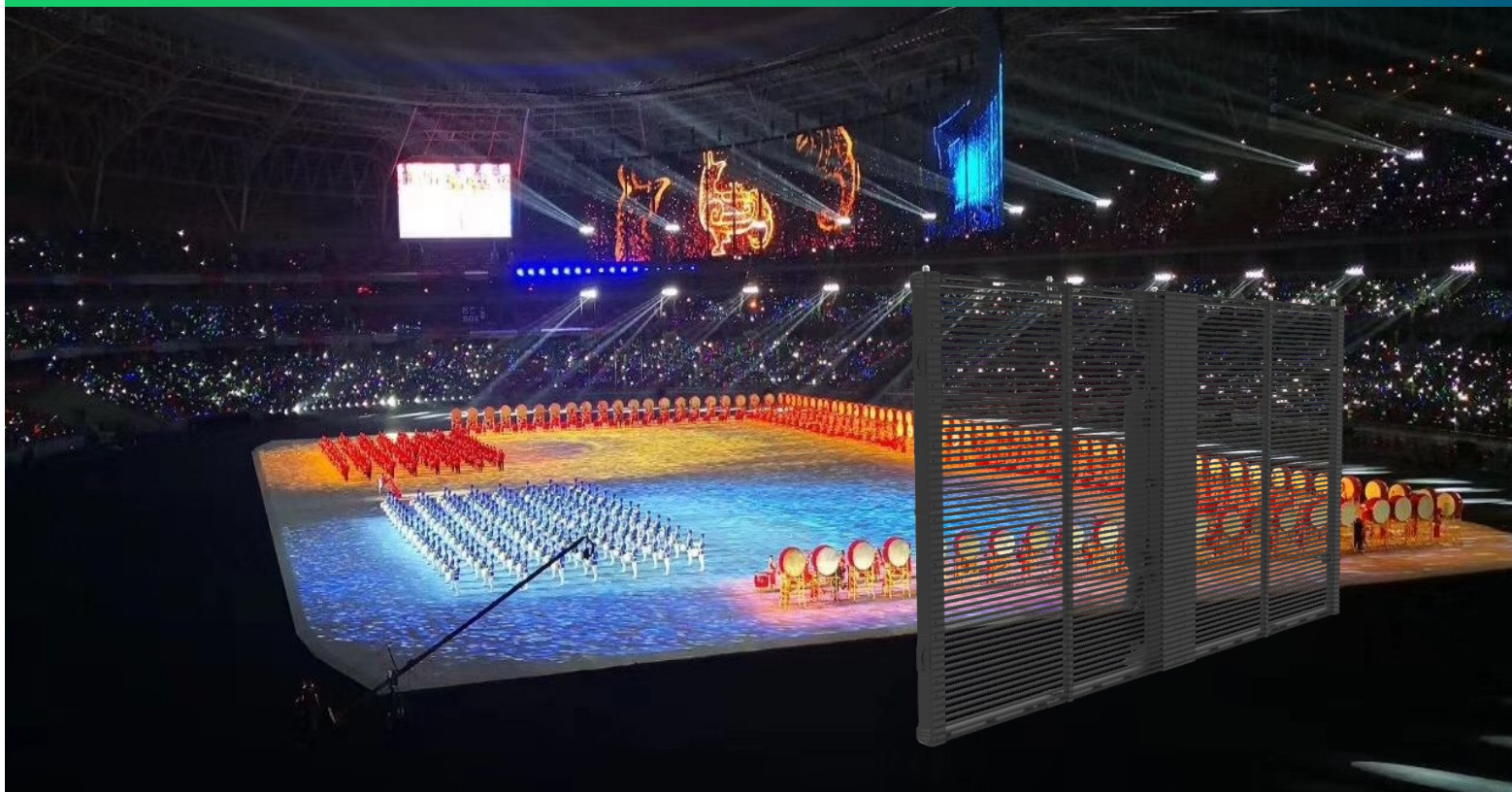
Pluggable strip shape design, easy to install & maintain, both front & rear maintenance allowed



72% transmittance, 3840Hz, 16 Bit.

High contrast ratio, large viewing
angle, wide color gamut

GOB Transparent LED Screen for Rental



Waterproof



Moisture-proof



Dust-proof



Anti-collision



Anti-UV

• Features

■ Waterproof / dust-proof / anti-collision / anti-UV

Leading GOB technology in the industry which is self-developed with a high protection transparent glue packaging technology. It can protect substrate and LED unit from damaging as the extremely environment, so that the LED screen can really realize waterproof, dust-proof, anti-collision and anti-UV. Also the LED chip is not easy to drop down.

■ Excellent displaying effect

56%—75% transmittance. Selecting the high refresh rate IC in the industry and high quality LED wafer that make LED screen with ultra high contrast ratio, large viewing angle and wider gamut. No shadow, no light & dark lines, reproducing the visual perfectly.

■ Customizable

The LED cabinet structure and size can be customized and developed as real project needs to ensure its transmittance, integrity and consistency of the display. Angle welding can be realized on building lighting project.

■ Easy to install & maintain

Pluggable strip shape design supports front & rear maintenance. Single LED strip can be replaced in short time which reduce the maintenance cost greatly.

■ Energy-saving and environment-friendly

The transparent part of this LED screen won't light up and no power consumption when the customized video is playing. Energy can be saved 30% at least than regular led screen.

Six Advantages

Extremely transparent

56% - 75% transmittance, the visual impact is strong



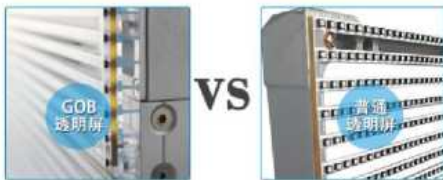
High contrast ratio

Colorful, vivid & dynamic, eye-catching



GOB technology

Self-developed packaging technology with a high protection transparent glue



High refresh rate

The minimum pixel pitch H3.9mm * V7.8mm. Refresh rate 3840Hz



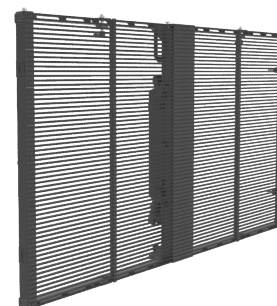
Energy-saving and environment-friendly

Power current sharing backup



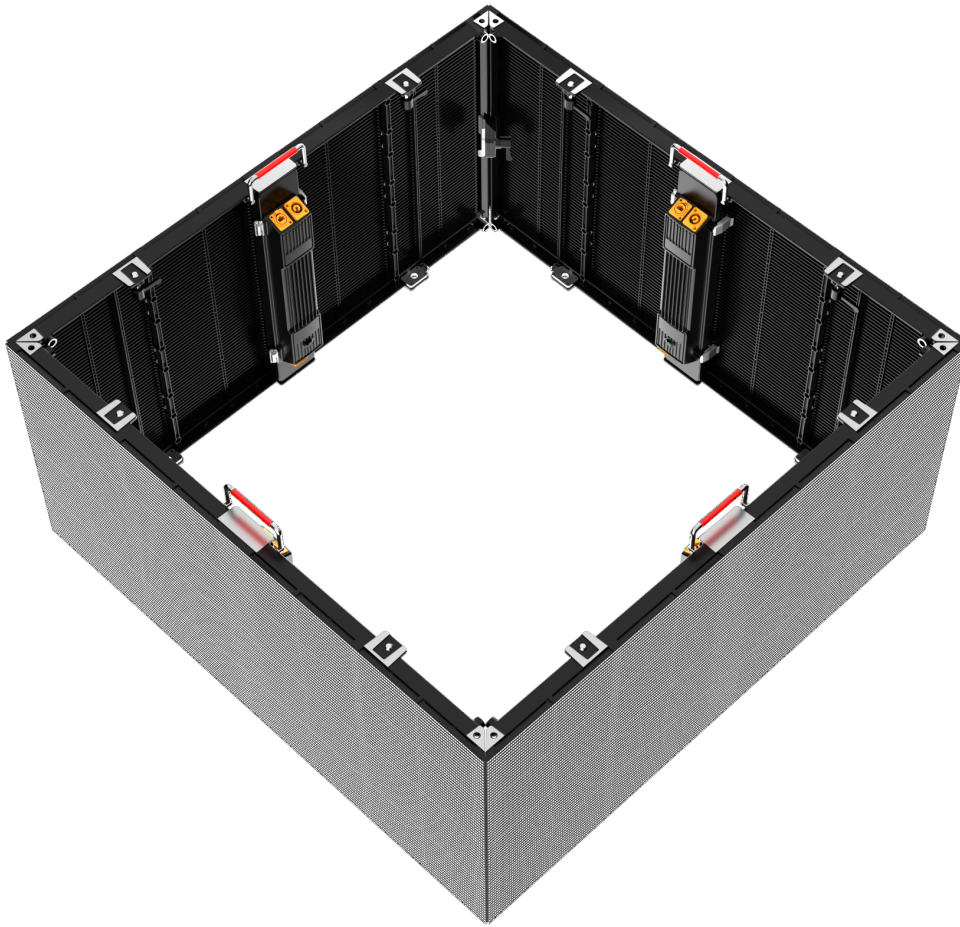
Minimalist design

Easy to instal without steel structure

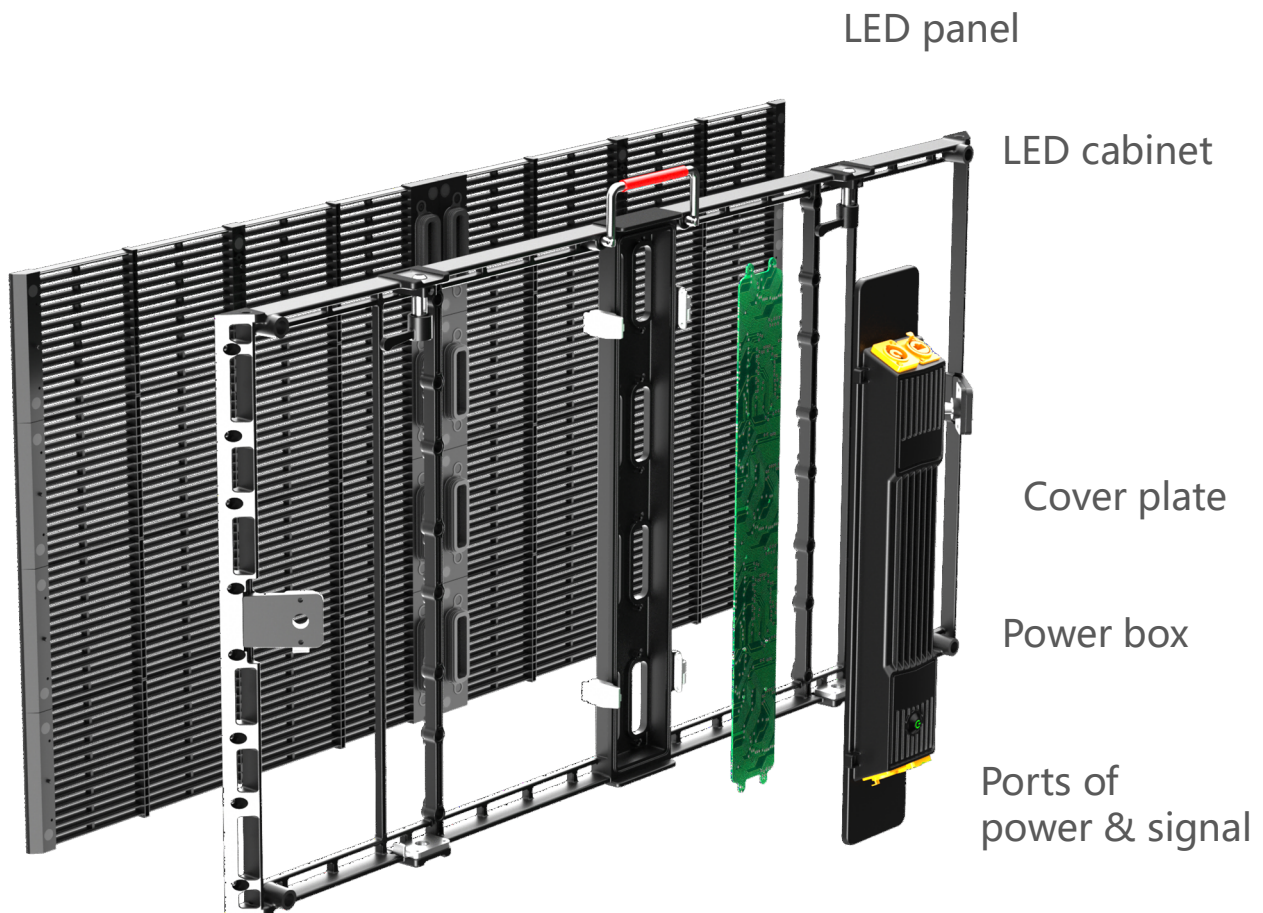


Aurora Series - transparent LED Screen for Rental

Product dimension



Product breakdown diagram



LED panel

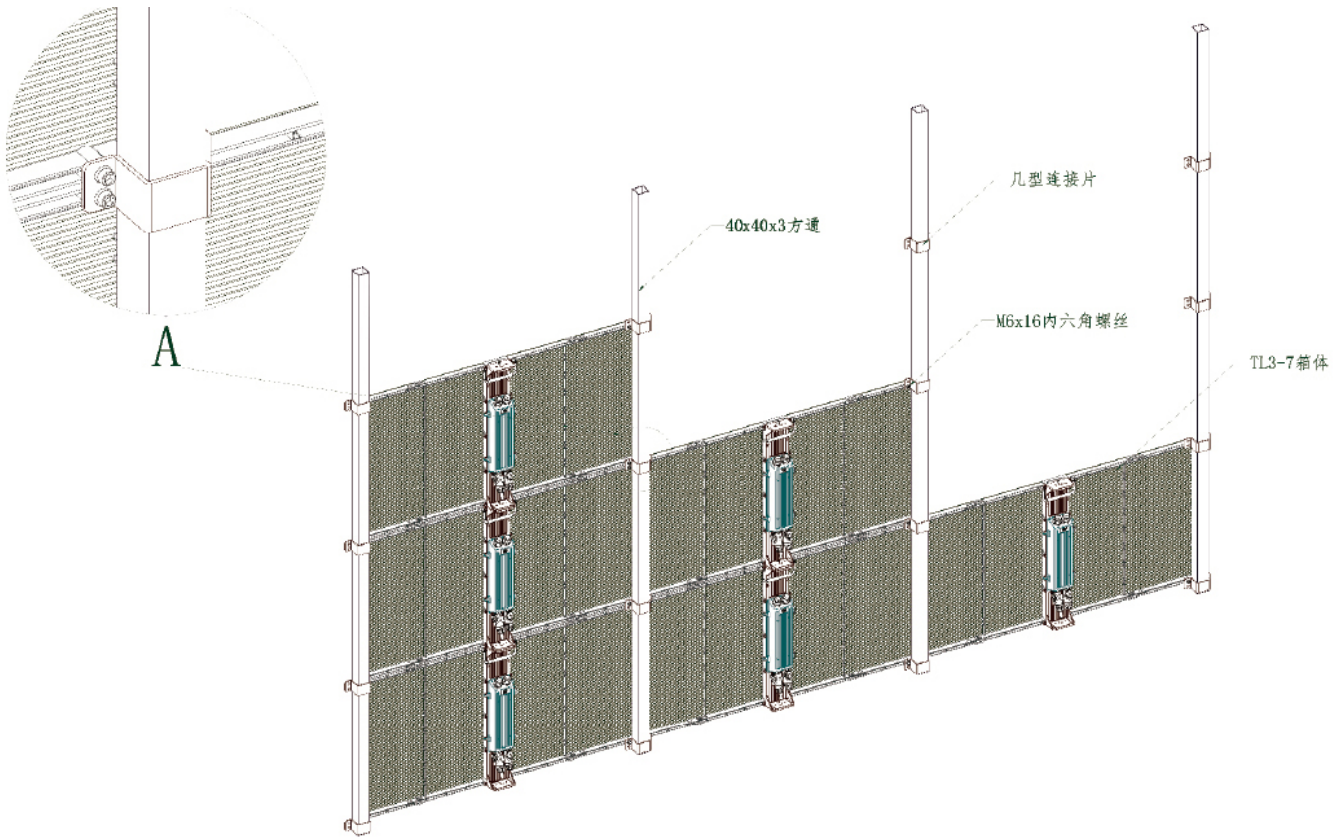
LED cabinet

Cover plate

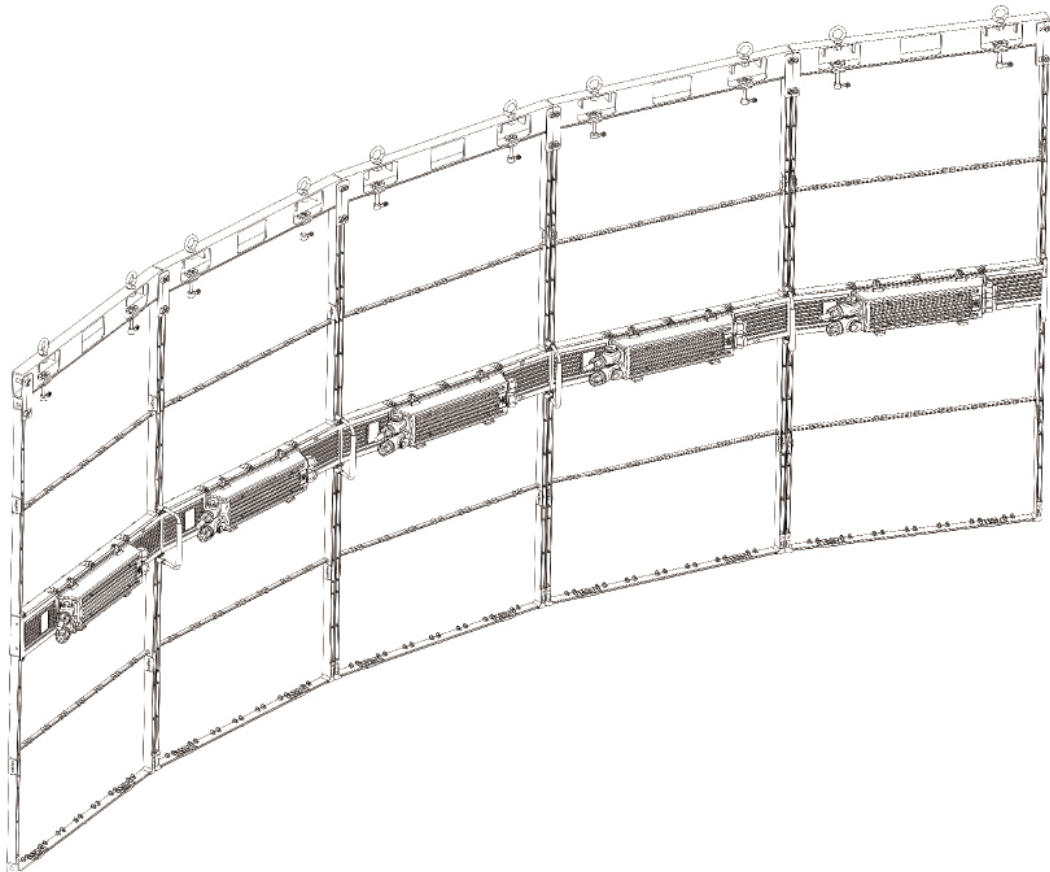
Power box

Ports of power & signal

Installation Schematic



Convex Shape Installation Schematic



Aurora Series - transparent LED Screen for Rental



Applications

Stage rental, large shopping mall, hotels, stadium, municipal engineering, monitoring centers, outdoor curtain walls, Automobile Sales Serviceshop(4S shop) and various luxury windows, etc.



Cases





Aurora Series Parameters- transparent LED Screen for Rental

Items	Parameters
Pixel Pitch (mm)	H3.9mm * V7.8mm
Pixel Density (dot/M2)	32768
Transmittance	Common 55%
Cabinet Pixel Arrangement	256*64 (90° rotatable)
Display Resolution	256*128 (Interlaced)
Max Power Consumption (W/M2)	800 (in white color)
Average Power Consumption (W/M2)	260 (Dynamic)
Brightness (nits)	4500
Cabinet Size (mm)	1000*500 (90° rotatable when installing)
Cabinet Weight (kg)	7.5 kg
Refresh Rate (Hz)	7680
LED Package	SMD1921
LED Control System	Nova
Display Ports	DVI/HDMI/DP/CAT cable
Driver IC	ICN2153 PWM
IP Rate	outdoor IP65
Working Voltage	DC4.5V
Power Supply	AC100~240V 50/60Hz /220V±10V
Working Temperatures / Humidity	-20~ 40°C, 10%-90% no condensation
LED Life Span	100,000 hours (start from the led lighten up to completely extinguished)



GuideVisual Aurora Series

