

WFB elevator balance compensation chain WFB全塑型电梯平衡补偿链



性能介绍 Performance

WFB 型电梯平衡补偿链，又称 QL 型电梯平衡补偿链，是一种给电梯提供理想且平稳运行的平衡补偿产品。该产品采用全自动焊机电焊锚链外裹弹性 PVC 改性体，外形为圆柱形，补偿重量及消音性能优异。具有外包层弹性好，强度高、阻燃、耐老化、适用温度范围广，运转弯曲半径小等优点。使用后电梯运行平稳、流畅、噪声低，适用于环境温度 -20°C 至 $+60^{\circ}\text{C}$ 之间，梯速不高于 2.5 米 / 秒的中高速电梯。

注：建议配套使用本厂提供的悬挂装置和导向装置，便于安装，利于安全、平稳运行。

WFB Elevator compensation chain, also known as QL elevator compensation chain, it can ensure the elevator working under an ideal and stable state. It is made from electric-welding anchor chain which covered with elastic rubber, its outline is cylinder, the weight and silence function is perfect. it has the following strong traits: greater elasticity, higher strength, flame retardant, anti-aging, wider temperature adaption range (-20°C ~ $+60^{\circ}\text{C}$), smaller bending radius, etc. After using this kind of compensation chain, the operation of your elevator will be stable and smoothly, and working with low noise. WFB(QL) is used for the elevator with rated speed of below and equal to 2.5m/s.

Note: we advise you to use installation kits and guide device made by Haixun Draka. It will be convenient for you to install and make it run safely and stably.

基本参数 Basic parameters

| 规格型号 Model No | 单位重量 (kg/m) Unit weight | 产品外径 (mm) External diameter | 链环直径 (mm) Diameter of link | 破断负荷 (kN) Broken load | 弯曲直径 (mm) Bending diameter |
|------------------|----------------------------|--------------------------------|-------------------------------|--------------------------|-------------------------------|
| QL (WFB) 075 | 1.12 ± 0.20 | 24 ± 1.5 | 6.0 ± 0.3 | ≥ 15.80 | ≤ 660 |
| QL (WFB) 100 | 1.49 ± 0.20 | 27 ± 1.5 | 6.5 ± 0.3 | ≥ 18.60 | ≤ 660 |
| QL (WFB) 125 | 1.88 ± 0.20 | 30 ± 1.5 | 7.0 ± 0.3 | ≥ 25.20 | ≤ 660 |
| QL (WFB) 150 | 2.24 ± 0.20 | 32 ± 1.5 | 7.5 ± 0.3 | ≥ 33.00 | ≤ 660 |
| QL (WFB) 175 | 2.63 ± 0.20 | 35 ± 1.5 | 8.5 ± 0.3 | ≥ 41.80 | ≤ 710 |
| QL (WFB) 200 | 2.98 ± 0.20 | 38 ± 1.5 | 8.5 ± 0.3 | ≥ 41.80 | ≤ 710 |
| QL (WFB) 250 | 3.73 ± 0.20 | 42 ± 1.5 | 10.0 ± 0.3 | ≥ 56.00 | ≤ 710 |
| QL (WFB) 300 | 4.47 ± 0.20 | 44 ± 1.5 | 11.0 ± 0.3 | ≥ 67.50 | ≤ 710 |
| QL (WFB) 350 | 5.22 ± 0.20 | 48 ± 1.5 | 12.0 ± 0.3 | ≥ 82.60 | ≤ 760 |
| QL (WFB) 400 | 5.96 ± 0.20 | 52 ± 1.5 | 13.0 ± 0.3 | ≥ 90.50 | ≤ 760 |

QLH elevator balance compensation chain QLH全塑型电梯平衡补偿链



专利号 patent NO.: ZL201520550395.2

性能介绍 Performance

QLH 全塑型电梯平衡补偿链，是一种给电梯提供理想且平稳运行的平衡补偿产品。该产品采用全自动焊机电焊锚链外裹弹性 PVC 弹性体，外形为圆柱形，补偿重量及消音的性能优异。具有外包层弹性好，强度高、阻燃、耐老化、适用温度范围广，运转弯曲半径小等优点。使用后电梯运行平稳、流畅、噪声低，适用于环境温度 -20°C 至 $+60^{\circ}\text{C}$ 之间，梯速不高于 3.5 米 / 秒的中高速电梯。

注：建议配套使用本厂提供的悬挂装置和导向装置，便于安装，利于平稳运行。

QLH compensation chain. Patent NO.: ZL201520550395.2

QLH compensation chain can ensure the elevator working under an ideal and stable state. It is made from electric-welding anchor chain which covered with elastic rubber and ball shot, its outline is cylinder, the weight and silence function is perfect. it has the following strong traits: greater elasticity, higher strength, flame retardant, anti-aging, wider temperature adaption range (-20°C ~ $+60^{\circ}\text{C}$), smaller bending radius, etc. After using this kind of compensation chain, the operation of your elevator will be stable and smoothly, and working with low noise. It is used for the elevator with rated speed of below and equal to 3.5m/s.

Note: we advise you to use installation kits and guide device made by Haixun Draka. It will be convenient for you to install and make it run safely and stably.

基本参数 Basic parameters

| 规格型号 Model No | 单位重量 (kg/m) Unit weight | 产品外径 (mm) External diameter | 链环直径 (mm) Diameter of link | 破断负荷 (kN) Broken load | 弯曲直径 (mm) Bending diameter |
|------------------|----------------------------|--------------------------------|-------------------------------|--------------------------|-------------------------------|
| QLH075 | 1.1 ± 0.2 | 24 ± 1.5 | 5.5 ± 0.3 | 15.80 | ≤ 650 |
| QLH100 | 1.5 ± 0.2 | 29 ± 1.5 | 6 ± 0.3 | 18.60 | ≤ 650 |
| QLH125 | 1.88 ± 0.2 | 31 ± 1.5 | 7 ± 0.3 | 25.20 | ≤ 650 |
| QLH150 | 2.2 ± 0.2 | 35 ± 1.5 | 8 ± 0.3 | 33.00 | ≤ 650 |
| QLH200 | 3 ± 0.2 | 38 ± 1.5 | 9 ± 0.3 | 41.80 | ≤ 700 |
| QLH250 | 3.7 ± 0.2 | 42 ± 1.5 | 10.5 ± 0.3 | 56.00 | ≤ 700 |
| QLH300 | 4.5 ± 0.2 | 44 ± 1.5 | 11.5 ± 0.3 | 67.50 | ≤ 700 |
| QLH350 | 5.2 ± 0.2 | 49 ± 1.5 | 12.7 ± 0.3 | 82.60 | ≤ 750 |
| QLH400 | 6.0 ± 0.2 | 52 ± 1.5 | 13.5 ± 0.3 | 90.50 | ≤ 750 |



Haixun Draka



WFC elevator balance compensation chain

WFC浸塑型电梯平衡补偿链



专利号: ZL201520499731.5

性能介绍 Performance

WFC型电梯平衡补偿链, 是一种给电梯提供理想且平稳运行的平衡补偿产品。该产品由全自动焊机电焊链经表面处理后(电镀或发黑防锈处理等)后包裹一层复合PVC塑料, 经特殊工艺加工而成, 外形为链环状, 克服了包塑补偿链易断裂的缺点。适用于环境温度-20℃至+60℃之间, 梯速不高于1.75米/秒的中低速电梯。

注: 建议配套使用本厂提供的悬挂装置和导向装置, 便于安装, 利于安全、平稳运行。

WFC Elevator compensation chain Patent NO.: ZL201520499731.5

WFC compensation chain can ensure the elevator working under an ideal and stable state. WFC is evenly coated by a layer of PVC liquid out of the high quality electric-welding chain, heated and solidified, and finally forming compensation chain into chain-in-chain shape. And clear the gaps between the every links, with no noise. WFC overcomes the shortcoming that PVC-coating chain is easily tore. Temperature adaption range(-20℃~+60℃). It is used for the elevator with rated speed of below and equal to 1.75m/s.

Note: we advise you to use installation kits and guide device made by Haixun Draka. It will be convenient for you to install and make it run safely and stably.

基本参数 Basic parameters

| 规格型号 Model No | 单位重量 (kg/m) Unit weight | 产品宽度 (mm) Width | 链环直径 (mm) Diameter of link | 破断负荷 (kN) Broken load | 弯曲直径 (mm) Bending diameter |
|------------------|----------------------------|--------------------|-------------------------------|--------------------------|-------------------------------|
| WFC050 | 0.88 ± 0.20 | 21.0 ± 2 | 6.0 ± 0.3 | ≥18.60 | 280 ± 50 |
| WFC075 | 1.12 ± 0.20 | 26.0 ± 2 | 7.0 ± 0.3 | ≥25.20 | 280 ± 50 |
| WFC100 | 1.49 ± 0.20 | 29.0 ± 2 | 8.0 ± 0.3 | ≥33.00 | 300 ± 50 |
| WFC125 | 1.88 ± 0.20 | 32.0 ± 2 | 9.0 ± 0.3 | ≥41.80 | 300 ± 50 |
| WFC150 | 2.24 ± 0.20 | 36.0 ± 2 | 10.0 ± 0.3 | ≥56.00 | 300 ± 50 |
| WFC175 | 2.50 ± 0.20 | 36.0 ± 2 | 10.5 ± 0.3 | ≥56.00 | 300 ± 50 |
| WFC200 | 2.98 ± 0.20 | 39.0 ± 2 | 11.0 ± 0.3 | ≥67.50 | 300 ± 50 |
| WFC225 | 3.20 ± 0.20 | 43.0 ± 2 | 12.0 ± 0.3 | ≥82.60 | 300 ± 50 |
| WFC250 | 3.73 ± 0.20 | 46.0 ± 2 | 13.0 ± 0.3 | ≥90.50 | 300 ± 50 |
| WFC300 | 4.47 ± 0.20 | 50.0 ± 2 | 14.0 ± 0.3 | ≥101.90 | 320 ± 50 |
| WFC350 | 5.22 ± 0.20 | 53.0 ± 2 | 15.0 ± 0.3 | ≥107.00 | 320 ± 50 |
| WFC400 | 5.96 ± 0.20 | 56.0 ± 2 | 16.0 ± 0.3 | ≥132.30 | 320 ± 50 |

Chain with intertwined rope

穿绳电梯平衡补偿链



性能介绍 Performance

该产品使用经过镀锌的全自动焊机电焊链穿麻绳或麻绳精心制作而成, 具有弯曲直径小, 强度高, 使用寿命长等优点。适用于环境温度-20℃至+60℃之间, 梯速不高于1.75米/秒的中低速电梯。

This kind compensation chain is precisely made from electric-welding chain and jute rope or other kind ropes. It has strong traits, such as: smaller bending radius, higher strength, longer using time. Temperature adaption range(-20℃~+60℃), intertwined rope compensation chain is used for the elevator with rated speed of below and equal to 1.75m/s.

| 规格型号 Model No | 单位重量 (kg/m) Unit weight | 链环直径 (mm) Diameter of link | 破断负荷 (≥kN) Broken load |
|------------------|----------------------------|-------------------------------|---------------------------|
| WFCSΦ6 | 0.70 ± 0.20 | 6.0 ± 0.3 | 18.60 |
| WFCSΦ7 | 1.00 ± 0.20 | 7.0 ± 0.3 | 25.20 |
| WFCSΦ8 | 1.40 ± 0.20 | 8.0 ± 0.3 | 33.00 |
| WFCSΦ9 | 1.80 ± 0.20 | 9.0 ± 0.3 | 41.80 |
| WFCSΦ10 | 2.20 ± 0.20 | 10.0 ± 0.3 | 56.00 |
| WFCSΦ11 | 2.70 ± 0.20 | 11.0 ± 0.3 | 67.50 |
| WFCSΦ12 | 3.20 ± 0.20 | 12.0 ± 0.3 | 82.60 |
| WFCSΦ14 | 4.30 ± 0.20 | 14.0 ± 0.3 | 101.9 |

Plastic-wrapped flex fire-retardant balance compensating chain

包塑弹性阻燃电梯平衡补偿链



包塑弹性阻燃电梯平衡补偿链选用优质全自动焊机电焊链经表面处理(电镀或发黑防锈处理等)后包裹一层复合PVC塑料, 经特殊工艺加工而成。适用于环境温度-20℃至+60℃之间, 梯速不高于1.75米/秒的中低速电梯。

It is made from electric-welding anchor chain (electroplating or black coating treatment) which covered with elastic rubber. Temperature adaption range(-20℃~+60℃). WFBS is used for the elevator with rated speed of below and equal to 1.75m/s.

| 规格型号 Model No | 单位重量 (kg/m) Unit weight | 链环直径 (mm) Diameter of link | 破断负荷 (kN) Broken load | 弯曲直径 (mm) Bending diameter |
|------------------|----------------------------|-------------------------------|--------------------------|-------------------------------|
| WFBSΦ6 | 0.88 ± 0.20 | 6.0 ± 0.3 | 18.60 | 260 ± 50 |
| WFBSΦ7 | 1.12 ± 0.20 | 7.0 ± 0.3 | 25.20 | 260 ± 50 |
| WFBSΦ8 | 1.49 ± 0.20 | 8.0 ± 0.3 | 33.00 | 300 ± 50 |
| WFBSΦ9 | 2.00 ± 0.20 | 9.0 ± 0.3 | 41.80 | 300 ± 50 |
| WFBSΦ10 | 2.24 ± 0.20 | 10.0 ± 0.3 | 56.00 | 300 ± 50 |
| WFBSΦ11 | 2.98 ± 0.20 | 11.0 ± 0.3 | 67.50 | 300 ± 50 |
| WFBSΦ12 | 3.20 ± 0.20 | 12.0 ± 0.3 | 82.60 | 320 ± 50 |
| WFBSΦ13 | 3.73 ± 0.20 | 13.0 ± 0.3 | 90.50 | 320 ± 50 |
| WFBSΦ14 | 4.47 ± 0.20 | 14.0 ± 0.3 | 101.90 | 320 ± 50 |

WFBG elevator balance compensation chain

WFBG全塑、钢球型电梯平衡补偿链



专利号 patent NO.: ZL201520550395.2

安装说明 Installation Direction

WFBG 型电梯平衡补偿链, 是一种给电梯提供理想且平稳运行的平衡补偿产品。该产品采用全自动焊机电焊链外裹弹性 PVC 和 PVC 弹性体及钢球混合层, 外形为圆柱形, 补偿重量及消音的性能优异。具有外包层弹性好, 强度高、阻燃、耐老化、适用温度范围广, 运转弯曲半径小等优点。使用后电梯运行平稳、流畅、噪声低, 适用于环境温度-20℃至+60℃之间, 梯速不高于3.5米/秒的中高速电梯。

注: 建议配套使用本厂提供的悬挂装置和导向装置, 便于安装, 利于安全、平稳运行。

WFBG compensation chain. Patent NO.: ZL201520550395.2

WFBG compensation chain can ensure the elevator working under an ideal and stable state. It is made from electric-welding anchor chain which covered with elastic rubber and ball shot, its outline is cylinder, the weight and silence function is perfect. It has the following strong traits: greater elasticity, higher strength, flame retardant, anti-aging, wider temperature adaption range(-20℃~+60℃), smaller bending radius, etc. After using this kind of compensation chain, the operation of your elevator will be stable and smoothly, and working with low noise. WFBG is used for the elevator with rated speed of below and equal to 3.5m/s.

Note: we advise you to use installation kits and guide device made by Haixun Draka. It will be convenient for you to install and make it run safely and stably.

| 规格型号 Model No | 单位重量 (kg/m) Unit weight | 产品外径 (mm) External diameter | 链环直径 (mm) Diameter of link | 破断负荷 (kN) Broken load | 弯曲直径 (mm) Bending diameter |
|------------------|----------------------------|--------------------------------|-------------------------------|--------------------------|-------------------------------|
| WFB075G | 1.10 ± 0.15 | 24 ± 1.5 | 5.5 ± 0.3 | ≥15.80 | ≤610 |
| WFB100G | 1.50 ± 0.15 | 26 ± 1.5 | 5.5 ± 0.3 | ≥15.80 | ≤610 |
| WFB125G | 1.80 ± 0.15 | 29 ± 1.5 | 6.0 ± 0.3 | ≥18.60 | ≤610 |
| WFB150G | 2.20 ± 0.15 | 31 ± 1.5 | 7.0 ± 0.3 | ≥25.20 | ≤610 |
| WFB175G | 2.60 ± 0.20 | 33 ± 1.5 | 8.0 ± 0.3 | ≥33.00 | ≤660 |
| WFB200G | 3.00 ± 0.20 | 36 ± 1.5 | 8.0 ± 0.3 | ≥33.00 | ≤660 |
| WFB250G | 3.70 ± 0.20 | 40 ± 1.5 | 9.0 ± 0.3 | ≥41.80 | ≤660 |
| WFB300G | 4.50 ± 0.25 | 42 ± 1.5 | 10.0 ± 0.3 | ≥56.00 | ≤660 |
| WFB350G | 5.20 ± 0.25 | 46 ± 1.5 | 11.0 ± 0.3 | ≥67.50 | ≤710 |
| WFB400G | 6.00 ± 0.25 | 50 ± 1.5 | 12.0 ± 0.3 | ≥82.60 | ≤710 |

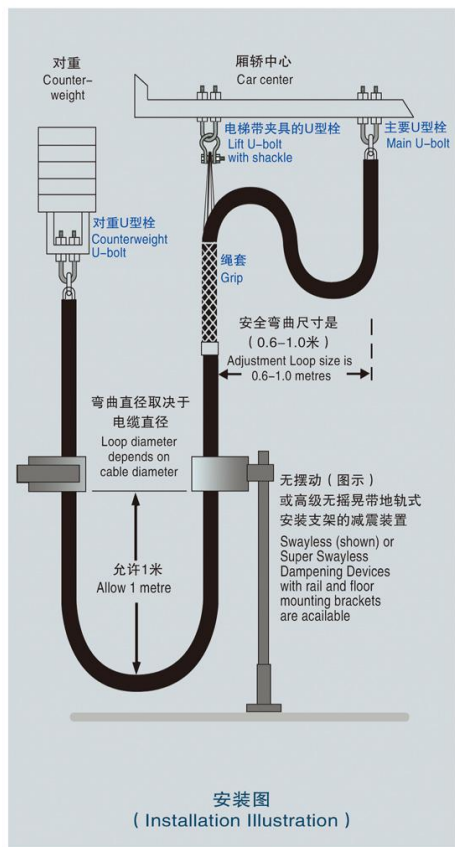


Haixun Draka



Installation Direction for WF series balance Compensating chain WF系列电梯平衡补偿链安装使用说明

安装说明 Installation Direction



安装时应去除平衡补偿链在卷取过程产生的螺旋、缠绕状，以防止外裹橡胶、塑料层因扭曲造成龟裂或剥离。

去除补偿链螺旋、缠绕状的方法：当平衡补偿链轿底一端挂好后，开慢车至顶端，量好平衡补偿链所需长度，裁断，将补偿链拖在地面的部分卷起扎好，距离地面1米以上，静态悬挂24小时，待放清缠绕后，将补偿链穿过导向装置，挂起另一端。

导向装置中心线与补偿链悬挂点在同一条垂线上，减少补偿链与导向装置之间的摩擦，减少噪音，延长使用寿命，避免意外故障的发生。

导向装置安装点距平衡补偿链弯曲底部垂直距离不小于1米，确保补偿链运行时（特别是电梯初始加速时）在底部有足够的缓冲，避免缓冲过小造成补偿链和导向装置之间产生阻力，导致补偿链拉坏导向，甚至拉断补偿链。补偿链弯曲底部距坑道地面应大于15厘米，避免呢产生托底，造成磨损。

补偿链运行一段时间，按电梯维保要求维护、保养时，需检查平衡补偿链的悬挂情况，并及时调整悬挂点及悬挂长度。

Before installation, eliminate twist caused by rolling when packing in order to prevent rubber or plastic to be cracked or peeled by twisting during working.

The way to eliminate twist: when one side of the compensating chain is hung on the bottom of the cabinet, run the elevator to the top side slowly, measure the chain length required, cut it, roll and wrap the left on the ground, keep it over 1 meter from the ground, and hang it static for 24 hours, till all twist is released, and then hang other side. After keeping the elevator working for many days, re-check whether there is any twist or not, if still, please repeat above-mentioned work method.

The center line of dampening device should be kept in the same vertical line with the hanging point, to prevent any accidental breakdown caused by more and more friction between compensating chain and dampening device for a long term.

The minimum distance is one meter between the installation point of dampening device and the bottom of loop of compensating chain, to prevent incurvation radius too short resistance leading to cause chain broken during movement.

The distance between the surface of underground tunnel and the bottom of bending compensation chain should be greater than 15cm, in order to avoid bottoming and making the compensation chain damaged.

When maintain the elevator after compensation chain operated for a period of time, need to check the balance compensation chain suspension, and adjust the suspension point and length of suspension in time.

性能介绍 Performance

导向装置是引导限制平衡链运行轨迹，同时防止平衡链高速运行时产生震荡或摇摆而设计的。当补偿链静止不动时，补偿链应与导向装置的导向轮不接触，而平衡链安装时应垂直穿过导向装置中心。使用本公司专有设计的导向装置能大大提高补偿链的使用寿命，同时使整个补偿链装置系统更加安全、可靠。

悬挂装置是由不锈钢绳套、U型栓、S钩、吊环组成。客户可根据设计要求自行配成。

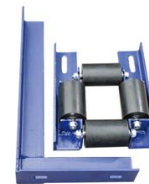
Guide Mechanism Device is specially designed for restraining the running orbit of compensation chain and preventing the shake rocks chiring the compensation chain running in high speed Compensation chain should be from the guide mechanism when it is still. When being installed, the compensation chain should be plumb across the center of guide mechanism. It will greatly extend the compensation chain service life and assure the whole compensation device system more safe and reliable.

Suspension Device is consists of galvanized mesh grips, U-bolt, S-hook and hanging ring. Customers can make their design according to different requirements.



A型导向装置 Guide Mechanism A

| | |
|------------|----------|
| 序号 Item | DX01-001 |
| 识别号 ID No. | A型 |



I型导向装置 Guide Mechanism I

| | |
|------------|----------|
| 序号 Item | DX12-001 |
| 识别号 ID No. | K320102 |



C型导向装置 Guide Mechanism C

| | |
|------------|----------|
| 序号 Item | DX03-001 |
| 识别号 ID No. | K320301 |



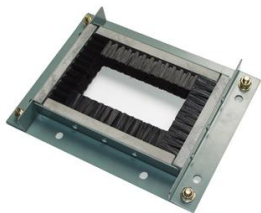
H型导向装置 Guide Mechanism H

| | |
|------------|------------|
| 序号 Item | DX07-001 |
| 识别号 ID No. | DAA22640系列 |



M型导向装置 Guide Mechanism M

| | |
|------------|----------|
| 序号 Item | DX10-001 |
| 识别号 ID No. | 57605186 |



毛刷导向装置 Brush guide device

| | |
|------------|----------|
| 序 号 Item | DX02-001 |
| 识别号 ID No. | HDMS1406 |

专利号ZL201420398148.0



T型平衡防护罩 Balance protective cover T

| | |
|------------|-----------|
| 序 号 Item | DX08-001 |
| 识别号 ID No. | 653673G01 |



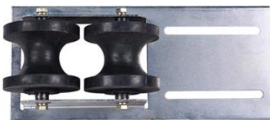
平衡防护罩 Balance protective cover

| | |
|------------|----------|
| 序 号 Item | XG06-001 |
| 识别号 ID No. | EXA384B |



F型导向装置 Guide Mechanism F

| | |
|------------|----------|
| 序 号 Item | DX06-001 |
| 识别号 ID No. | 57006966 |



E型导向装置 Guide Mechanism E

| | |
|------------|----------|
| 序 号 Item | DX05-001 |
| 识别号 ID No. | 57006966 |



U型栓 U-shaped bolt

| | |
|------------|-------------------|
| 序 号 Item | XG01-001 |
| 识别号 ID No. | M6 M8 M10 M12 M14 |

产品概述 Description

用于轿厢底端和对重连接。
To connect the car bottom and counter weight



S钩 S Hook

| | | |
|------------|--|----------|
| 序 号 Item | XG02-001 | XG02-002 |
| 识别号 ID No. | φ12 φ14 A ₁ A ₂ A ₃ | |

产品概述 Description

用于补偿链与轿厢连接。
Connect the car and compensation chain



吊环 shackle

| | |
|------------|----------|
| 序 号 Item | XG03-001 |
| 识别号 ID No. | XAA172B |

产品概述 Description

用于补偿链与S钩连接
Connect compensation Chain and S hook

绳套 Stainless Strip



| 序 号 Item | 识别号 ID No. | 长度(mm) Length | 外径(mm) Outer Dia. | 内径(mm) Inner Dia. | 钢丝绳规格(mm) Specification | 产品概述 Description |
|-------------|---------------|------------------|----------------------|----------------------|----------------------------|--|
| XG04-001 | Φ100 | 710 ± 10 | 43 ± 1 | 31 ± 1 | 1.2 | 由多股钢丝绳拧编而成，用于悬挂平衡链、电缆，便于调节长度。 Interwisted by strands of wire rope and it used to append the compensation Chain and adjust the length of cables. |
| XG04-002 | Φ200 | 710 ± 10 | 52 ± 1 | 40 ± 1 | 1.2 | |
| XG04-003 | Φ250 | 710 ± 10 | 58 ± 1 | 46 ± 1 | 1.5 | |
| XG04-004 | Φ400 | 710 ± 10 | 66 ± 1 | 54 ± 1 | 1.8 | |

绳头组件

Wedge Socket

LY415P LY415P

| 序号 Item | 识别号 ID No. | 产品概述 Description |
|------------|---------------|--|
| PT01-001 | Φ12-13 | 钢丝绳用银件整体绳头组件。 Solid Forging Wedge Socket used for Wire Rope. |



Φ12钢丝绳用绳头组合 Φ12 Wedge Socket used for Wire Rope

| 序号 Item | 识别号 ID No. | 产品概述 Description |
|------------|---------------|---|
| PT02-001 | LA031GX | 锥套头选用35号钢无缝管锻造。 Taper Sleeve Head is precisely forged by #35 steel. |



Φ12-13钢丝绳用绳头组合 Φ12-13 Wedge Socket used for Wire Rope

| 序号 Item | 识别号 ID No. | 产品概述 Description |
|------------|---------------|---|
| PT03-001 | LW16801445C | 锥套头选用35号钢无缝管锻造。 Taper Sleeve Head is forged by #35 steel seamless tube. |



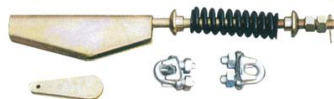
Φ8-10钢丝绳用生绳头组合 Φ8-10 Wedge Socket used for Wire Rope

| 序号 Item | 识别号 ID No. | 产品概述 Description |
|------------|---------------|---|
| PT04-001 | LT832682 | 锥套头选用35号钢、QT500-7 球铁精密铸造两种。 Taper Sleeve Head is precisely forged by #35 steel or QT500-7 ductile iron. |



Φ8钢丝绳用绳头组合 Φ8 Wedge Socket used for Wire Rope

| 序号 Item | 识别号 ID No. | 产品概述 Description |
|------------|---------------|---|
| PT05-001 | LJ395931 | 锥套头选用Q235A钢板焊制。 Taper Sleeve Head is welded by Q235A steel plate. |



| 部件号 Part Number | 规格 Product Code | 重量 Cable Weight lbs/ft • kg/m | 铁链直径 Chain Trade Size inches • mm | 补偿链外径 Cable Nom. OD inches • mm | 最大悬挂长度 Max. Hang Length feet • meters | 弯曲直径 Nom. Loop Width inches • mm |
|--------------------|--------------------|-------------------------------------|---|---------------------------------------|---|--|
| 18-075-97 | WF 075 | 0.75 • 1.1 | 3/16 • 5.5 | 1.05 • 27 | 600 • 183 | 22 • 540 |
| 18-010-97 | WF 10 | 1.0 • 1.5 | 3/16 • 5.5 | 1.15 • 29 | 600 • 183 | 24 • 610 |
| 18-015-97 | WF 15 | 1.5 • 2.2 | 1/4 • 7 | 1.36 • 35 | 600 • 183 | 24 • 610 |
| 18-020-97 | WF 20 | 2.0 • 3.0 | 1/4 • 7 | 1.50 • 38 | 520 • 158 | 26 • 660 |
| 18-025-97 | WF 25 | 2.5 • 3.7 | 5/16 • 8 | 1.63 • 41 | 600 • 183 | 26 • 660 |
| 18-030-97 | WF 30 | 3.0 • 4.5 | 5/16 • 8 | 1.77 • 45 | 505 • 154 | 26 • 660 |
| 18-035-97 | WF 35 | 3.5 • 5.2 | 3/8 • 10 | 1.91 • 49 | 600 • 183 | 27 • 690 |
| 18-040-97 | WF 40 | 4.0 • 6.0 | 3/8 • 10 | 2.03 • 52 | 530 • 162 | 27 • 690 |

Whisper-Flex补偿链可在-15°C至+60°C顺畅运行，可用于梯速不高于3.56m/s的电梯。

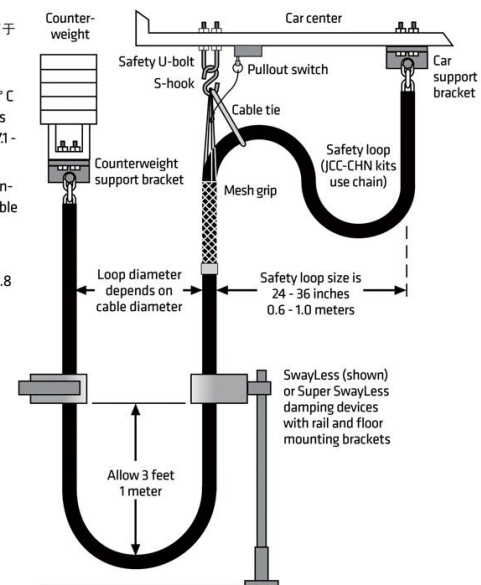
为Whisper-Flex补偿链特别设计的支架、U型栓、S钩和重载不锈钢绳套必须使用，以确保安装的安全。

特雷卡电梯防晃导向装置被推荐用于最小化梯速高于1.8m/s的电梯补偿链的摇晃。

Whisper-Flex compensation cable provides smooth operation at temperatures of 5° F to 140° F • -15° C to +60° C and, in the US, can be used for elevators with rated speeds of no greater than 700 ft/min • 3.56 m/sec (per ASME A17.1-2013, Rule 2.21.4.2 Compensating Rope Tie-Down).

Support brackets, U-bolts, S-hooks, and heavy duty stainless steel grips specifically designed for Whisper-Flex cable must be used to ensure safe installations.

Draka Elevator damping devices are recommended to minimize cable sway for car speeds above 350 ft/min • 1.8 m/sec.



不锈钢绳套 - 双眼/双编/闭网 Stainless steel mesh grip - double eye/double weave/closed mesh

| 部件号 Part Number | 适用于 For use on Cables | 眼长 Eye Length inches • mm | 网长 Nom. Mesh Length inches • mm | 最大载荷 Maximum Load lbs • kg |
|--------------------|-----------------------------|---------------------------------|---------------------------------------|----------------------------------|
| 024-20-1504 | WF 075, WF 10 | 12.0 • 305 | 14.0 • 356 | 1200 • 545 |
| 024-20-1470 | WF 15 | 12.0 • 305 | 15.0 • 381 | 1640 • 745 |
| 024-20-1510 | WF 20, WF 25 | 12.0 • 305 | 17.0 • 432 | 1660 • 755 |
| 024-20-1499 | WF 30, WF 35 | 12.0 • 305 | 19.0 • 483 | 1800 • 818 |
| 024-20-1542 | WF 40 | 12.0 • 305 | 21.0 • 533 | 1800 • 818 |

最大载荷基于5:1安全系数的最小破断。
Maximum Load is based on minimum breaking strength with a 5:1 safety factor.

支架 - 需2个 Support bracket - two required

| 部件号 Part Number | 适用于 For use on Cables | 外部尺寸 Overall Size (AxBxC) in • mm | 孔径 Hole D Dia. in • mm | 腰孔尺寸 Slot Size in • mm | 腰孔间距 Slot E to E in • mm |
|--------------------|-----------------------------|---|------------------------------|------------------------------|--------------------------------|
| n/a | WF 075 WF 10 | 3 x 3 x 5 • 76 x 76 x 127 | 3/8 • 9.5 | 1/2 x 7/8 • 13 x 22 | 2-5/8 • 66.7 |
| n/a | WF/SFC 15 to WF/SFC 30 | 3 x 3 x 5 • 76 x 76 x 127 | 7/16 • 11 | 1/2 x 7/8 • 13 x 22 | 2-5/8 • 66.7 |
| n/a | WF/SFC 35 to WF/SFC 40 | 3 x 3 x 5 • 76 x 76 x 127 | 1/2 • 13 | 1/2 x 7/8 • 13 x 22 | 2-5/8 • 66.7 |

支架作为JCC套件的一部分售卖，不能单独订购。
Support brackets are sold as part of the JCC kits and cannot be ordered separately.

U型栓 - 需1个 Steel U-bolt - one required

| 部件号 Part Number | 适用于 For use on Cables | 尺寸A Dim. A in • mm | 尺寸B Dim. B in • mm | 尺寸C Dim. C in • mm | 尺寸T Dim. T in • mm | 最大载荷 Maximum Load* lbs • kg |
|--------------------|--|--------------------------|--------------------------|--------------------------|--------------------------|-----------------------------------|
| n/a | WF 075, WF 10 WF/SFC 15 to WF/SFC 40 | 3/8 • 9.5 | 4-3/4 • 121 | 2-7/8 • 73 | 3 • 76 | 2320 • 1052 |

U型栓作为JCC套件的一部分售卖，不能单独订购。*最大载荷基于5:1安全系数的最小破断。

U-bolts are sold as part of the JCC kits and cannot be ordered separately.

*Maximum Load is based on minimum breaking strength with a 5:1 safety factor.

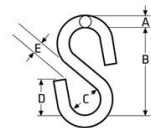
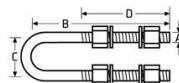
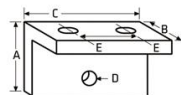
S钩 - 需1个 - 可单独更换 Steel S-hook - one required - available for individual replacement

| 部件号 Part Number | 适用于 For use on Cables | 尺寸A Dim. A in • mm | 尺寸B Dim. B in • mm | 尺寸C Dim. C in • mm | 尺寸D Dim. D in • mm | 尺寸E Dim. E in • mm | 屈服强度 Yield Strength lbs • kg |
|--------------------|-----------------------------|--------------------------|--------------------------|--------------------------|--------------------------|--------------------------|------------------------------------|
| 79-011 | WF 075, WF 10 | 3/8 • 9.5 | 2-3/8 • 60 | 3/4 • 19 | 31/32 • 25 | 17/32 • 14 | 1200 • 544 |
| 79-013 | WF/SFC 15 to WF/SFC 20 | 3/8 • 9.5 | 2-3/4 • 70 | 3/4 • 19 | 1-1/8 • 29 | 1/2 • 13 | 2400 • 1088 |
| 79-016 | WF/SFC 25 to WF/SFC 40 | 17/32 • 13.5 | 3 • 76 | 1 • 25 | 1-1/8 • 29 | 19/32 • 15 | 4800 • 2177 |

由于S钩设计用于在电梯受阻中减缓可能的受损，因此如特雷卡补偿链安装指导中所示，这个部件可用于更换。
Since the S-Hook is designed to yield in order to alleviate possible damage in the event of obstruction, this item is available for replacement purposes as shown in the Draka Compensation Cable Installation Guide.

脚扣 - 需1个或2个用于JCC-CHN安装配件中 Coupling - one or two required for JCC-CHN installation - see page 71

| 部件号 Part Number | 适用于 For use on Cables | 适用的铁链尺寸 For Chain Size in • mm | 尺寸A Dim. A in • mm | 尺寸B Dim. B in • mm | 工作载荷极限 Working Load Limit lbs • kg |
|--------------------|-----------------------------|--------------------------------------|--------------------------|--------------------------|--|
| 79-116 | WF 075 to 30 | 9/32 • 7 | 2-17/32 • 64 | 15/16 • 23 | 4300 • 1950 |
| 79-117 | WF/SFC 35 to 40 | 3/8 • 10 | 3-7/16 • 87 | 2-3/8 • 60 | 8800 • 4000 |



带大导轮的超级防晃导向装置 Super SwayLess with larger rollers

| 部件号 Part Number | 适用于 Application | 外部尺寸 Overall Dimensions in • mm | 安装孔直径 Mounting Hole Dia. in • mm | 数量 Quantity |
|--------------------|---|---|--|----------------|
| WF-RDD4 | Whisper-Flex, Steadi-Flex Replacement pads | 8 x 8 x 3.1 • 203 x 203 x 79 1.5 X 1.5 • 38.1 X 38.1 | 1/2 • 13 1/2 • 13 | 1 4 |

新款超级防晃导向WF-RDD4设计用于任何尺寸的Whisper-Flex或Steady-Flex补偿链。其被推荐用于速度高达3.56m/s的补偿链的顺畅运行。
自由旋转的尼龙大导轮设计用于大井道，提高耐久性。导轮尺寸的增加同时能获得更安静的运行。填充油脂的高强度轴承用于承受更高的压力和Steady-Flex补偿链的影响。

每根补偿链需要2套超级防晃导向装置。安装支架单独销售（见下方）

The new Super SwayLess WF-RDD4 is designed for use on any size Whisper-Flex® or Steady-Flex® compensating cable. It is recommended for smooth compensating cable operation for speeds up to 700 feet/min (3.56 m/sec).

Larger free-turning nylon rollers have been engineered with a bigger shaft for increased durability. The increased size of the rollers also permits quieter operation. Grease-filled high-strength bearings are built to handle the higher pressures and impact of Steady-Flex cables.

This enhanced design uses the formed steel mounting brackets from the earlier version of the Super SwayLess for simpler installation and cushioned isolation pads to reduce vibration noise.

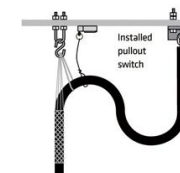
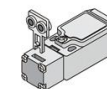
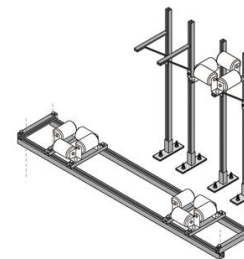
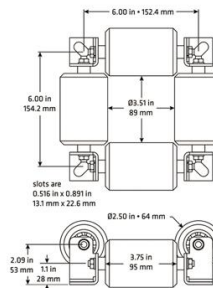
Two Super SwayLess devices are required per cable. Mounting brackets are sold separately (below).

超级防晃导向装置安装支架 Super SwayLess mounting brackets

| 部件号 Part Number | 描述 Description |
|--------------------|--|
| SSL-FMB-48 | (2) floor-mounted brackets, adjustable to 48 in. • 1.2 m height, order WF-RDD4 separately |
| SSL-RMB-72 | Counterweight rail-mounted bracket, adjustable to 72 in. • 1.8 m width, order WF-RDD4 separately |
| SSL-RMB-2 | Counterweight rail-mounted bracket, adjustable to 72 in. • 1.8 m width, includes (2) WF-RDD4 devices |

拉拽开关和安装配件 Pullout Switch and Installation Kit

| 部件号 Part Number | 描述 Description |
|--------------------|--|
| 36-207 | Pullout switch, with flat key actuator and rotating head |
| WF-POSK | Pullout switch installation kit, which includes one pullout switch (#36-207), two split O-rings, two cable ties, two 4 x 40 mm pan-head screws, two 4 mm hex nuts, four 4 mm flat washers and two 4 mm lock washers. |



地震仪

Seismograph

| 部件号 Part Number | 描述 Description |
|--------------------|--|
| DRK-S701-ROHS | EMD seismic detector with relays for external sensors - AC or DC power |
| 30016 | Replacement battery for DRK-S701 |
| 78-108 | Fuse for DRK-S701 |

DRK-S701-ROHS可检测地震活动，并发送电梯控制信号以根据震级采取合适的行动。安装得当的话，地震仪可检测到潜在的危险地震活动，并向控制系统发出警报，使电梯停靠最近的楼层以疏散乘客。它同时可连接到特雷卡对重偏移感应器。

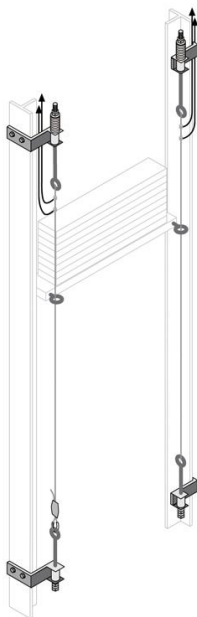
The DRK-S701-ROHS EMD detects and measures seismic events and signals elevator controls to take appropriate action based on their magnitude. Properly installed, the EMD will detect a potentially dangerous seismic event and alert the controller to stop the car at the nearest floor to discharge the passengers. It can also be connected to the Draka Ring-on-a-String counterweight displacement sensor.



对重偏移感应器

Counterweight displacement kit ("ring-on-a-string")

| 部件号 Part Number | 描述 Description |
|--------------------|---|
| CDH-R8 | Counterweight displacement kit, mounts to T89 guide rails (order cable [CDH-L500, CDH-L1000 or CDH-L1500] separately) |
| CDH-R12 | Counterweight displacement kit, mounts to T127 guide rails (order cable [CDH-L500, CDH-L1000 or CDH-L1500] separately) |
| CDH-L500 | Cable, 500 ft • 152 m length, 1/16 in. • 1.6 mm diameter, with thimbles and clips (use for up to 250 ft • 71 m of rise) |
| CDH-L1000 | Cable, 1000 ft • 304 m length, 1/16 in. • 1.6 mm diameter, with thimbles and clips (use for up to 500 ft • 152 m of rise) |
| CDH-L1500 | Cable, 1500 ft • 456 m length, 1/16 in. • 1.6 mm diameter, with thimbles and clips (use for up to 750 ft • 223 m of rise) |
| 040219 | Cable, cut to length, does not include attachment hardware, please specify length |
| 79-103 | Thimble, for 1/16 in. • 1.6 mm cable attachment (replacement part) |
| 79-104 | Wire rope clip, for 1/16 in. • 1.6 mm cable attachment (replacement part) |
| 36-178 | Wire cutters, for cutting steel cable |



通用悬挂系统——美国专利号5080199

Universal Hanging System – US patent 5,080,199

| 部件号 Part Number | 适用的钢丝绳直径 For Steel Core Dia. inches • mm | 电缆数量 Number/ of Cables Held | 每根电缆最大载荷 Max. per cable Load lbs • kg |
|--------------------|--|--------------------------------|---|
| 3/32-1 SBKT | 3/32 • 2.4 | 1 cable | 500 • 227 |
| 1/8-1 SBKT | 1/8 • 3.2 | 1 cable | 500 • 227 |
| 5/32-1 SBKT-R | 5/32 • 4.0 | 1 cable | 700 • 318 |
| 1/4-1 SBKT | 1/4 • 6.4 | 1 cable | 1750 • 794 |



通用悬挂系统 适用于2根电缆

Universal hanging system for two cables

| 部件号 Part Number | 适用的钢丝绳直径 For Steel Core Dia. inches • mm | 电缆数量 Number/ of Cables Held | 每根电缆最大载荷 Max. per cable Load lbs • kg |
|--------------------|--|--------------------------------|---|
| 5/32-2 SBKT-R | 5/32 • 4.0 | 2 cables | 700 • 318 |
| 1/4-2 SBKT | 1/4 • 6.4 | 2 cables | 1250 • 568 |

These are two-cable versions of the Universal Hanging System.



配件件套

Replacement strand vises

| 部件号 Part Number | 描述 Description |
|--------------------|---|
| 3/32 PINS-A | Replacement strand vise for 3/32 in. rope |
| 1/8 PINS-A | Replacement strand vise for 1/8 in. rope |
| 5/32 PINS-A | Replacement strand vise for 5/32 in. rope |
| 1/4 PINS-A | Replacement strand vise for 1/4 in. rope |

减震类 Dampening Products

金属与非金属粘合是本公司技术特长，该类产品具有粘强度高、弹性好、减震性能优等特点。减震、缓冲装置适用于各种载重的客、货梯。且根据载重量不同，装备不同硬度的产品。

产品使用天然橡胶经科学配方精制成高性能橡胶弹性体，通过专门工艺与金属结构件粘合而成，可按客户要求设计生产不同规格产品，特别适用于曳引机减震。本公司可根据客户图纸设计加工各种类型的橡胶与金属、塑料与金属、橡胶与塑料粘合的产品。

The technical expertise of our company is metal & non-metal conglutination. These products are highly sticky and elastic and also can decrease vibration. The shock absorber and buffer device are used for all kinds of elevator, and we can make it in different hardness according to different load of elevator.

By scientific formulary, the natural rubber is refined into good functional flexible body, and then glue with metal piece to be final product, we can design and produce different specification according to the requirement from clients, which specially used in shock absorbing for traction engine. We accept customers designs and drawings.

减震橡胶A型 Shock absorber and buffer device A

| 序 号 Item | 识别号 ID No. |
|----------|--------------------|
| JS01-001 | I 型(TK21-00) |
| JS01-002 | II 型(DEK3R67664E) |
| JS01-003 | III 型(DEK3R67664F) |
| JS01-004 | IV 型(DEK3R06975) |



减震橡胶B型 Shock absorber and buffer device B

| 序 号 Item | 识别号 ID No. |
|----------|------------|
| JS02-001 | 57001975 |
| JS02-002 | DEK3R05468 |



减震垫 Dampener

| 序 号 Item | 识别号 ID No. |
|----------|------------|
| JS03-001 | PAA310E3 |

产品概述 Description
用于电梯轿厢的减震。
Mainly for shock absorption.



橡胶缓冲件 Buffer

| 序 号 Item | 识别号 ID No. |
|----------|------------|
| JS04-001 | 36-135-M1 |



减震底座 Dampening base

| 序 号 Item | 识别号 ID No. |
|----------|------------|
| JS05-001 | DAEA17C791 |

产品概述 Description
用于电梯轿厢的减震。
Mainly for shock absorption.



减震垫 Dampener

| 序 号 Item | 识别号 ID No. |
|----------|--------------|
| JS06-001 | PAA310BS1/S2 |

产品概述 Description
用于电梯轿厢的减震。
Mainly for shock absorption.



减震垫 Dampener

| 序 号 Item | 识别号 ID No. |
|----------|------------|
| JS07-001 | P13301661 |

产品概述 Description
用于电梯轿厢的减震。
Mainly for shock absorption.



门导靴 Guide shoe

序 号 Item JS06-001

识别号 ID No. Z395AD

产品概述 Description

用于电梯轿厢的减震。
Mainly for shock absorption.



导靴 Guide shoe

序 号 Item JS07-001

识别号 ID No. DX23

产品概述 Description

固定轿厢与导轨。
To fix the car and guide rail.



扶梯导轨 Escalator guide rail

序 号 Item JS09-001

识别号 ID No. GAA483CNJ

产品概述 Description

弹性好、减振性能强。
Good elasticity and shock absorption.



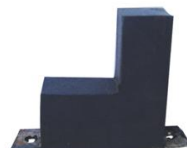
限位块 Limit piece

序 号 Item JS08-001

识别号 ID No. DYJ0310CV1

产品概述 Description

具有限位作用。
Has the limit function.



扶手入口保护 Handrail guide insert guard

序 号 Item XJ05-001 XJ05-002

识别号 ID No. SFV809639 GAA384JZ1

产品概述 Description

耐磨，对扶手带有保护作用。
It has the wearable, protect the handrail strap.



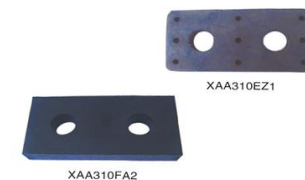
隔音板 Sound Insulation Pad

序 号 Item XJ07-001 XJ07-002

识别号 ID No. XAA310EZ1 XAA310FA2

产品概述 Description

具有隔音作用。
It has the sound insulation.



油盒 Oil Box

序 号 Item DLFJ06-001

识别号 ID No.

产品概述 Description

用于电梯导轨润滑。
Uses in the elevator guide rail lubrication.



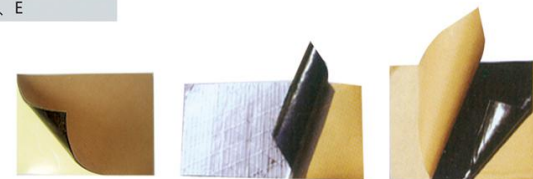
隔音橡胶 Sound Insulation Rubber sheet

序 号 Item DLFJ06-001

识别号 ID No. 3E411399-C、D、E

产品概述 Description

用于电梯装潢
Used for elevator decoration





导轨支架装箱
Rail Bracket Packing



无机房机器底座装箱
Machine Base Packing



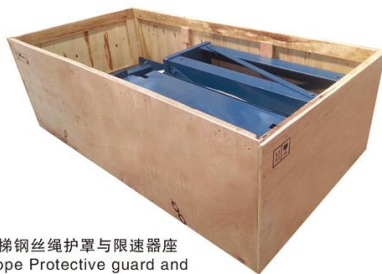
井道部件装箱
Pit Components Packing



导轨支架装箱
Rail Bracket Packing



立柱装箱
Column Parts Packing



高速梯钢丝绳护套与限速器座
Wire rope Protective guard and
Speed governor Base Packing



缓冲器底座
Buffer Base



绳头安装支架
Rope Installation Bracket



后对重机器底座
Back-countweight Base



侧梁 Side Beam



绳头安装支架
Rope Installation Bracket



轿厢侧导轨支架 Rail Bracket



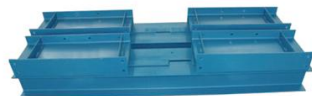
高速梯底座 High-speed Elevator Base



对重架 Counterweight Frame



有机房机器底座
Machine Base of Elevator with Machine-room



机器梁
Machine Beam



轿底
Car Bottom



横梁 Cross Beam



承重槽钢组件 U-bar Component



无机房机器底座系列
Machine Base of
Machine-roomless Elevator



无机房机器底座系列
Machine Base of
Machine-roomless Elevator



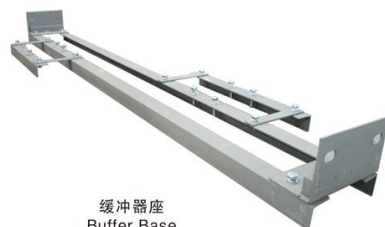
底梁 Bottom Beam



轿底称重装置
Weighing Device



侧梁裸包箱
Packaging for Side Beam



缓冲器座
Buffer Base



标准门锁
Standard lockset



急停开关
Emergency Switch