



ANDROID 10



All-in-One Management
Your Smart Home Control Center

ALL IN ONE PANEL ADMIN GUIDE

Applicable Models: TC-U9AIZK-A12A/Z3

Version: 1.0 | Date: August.2023

About This Manual

Thank you for choosing Taichuan TC-U9AIZK-A12A/Z3 all in one panel. This manual is intended for the administrators who need to properly configure the indoor monitor. This manual provides all the configurations for the functions and features of the TC-U9AIZK-A12A/Z3 smart control panel. Please visit the Taichuan website or consult technical support for any new information or the latest firmware.

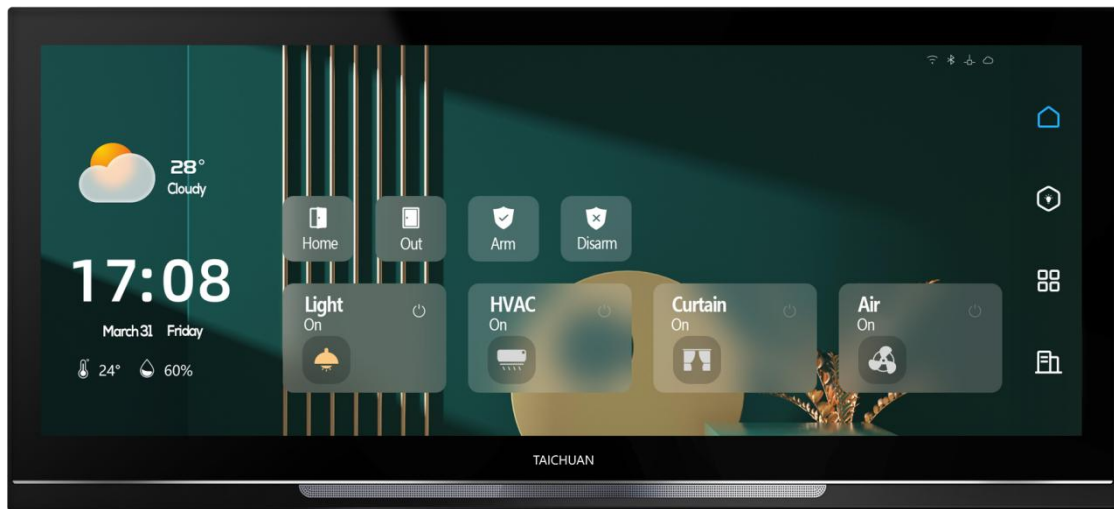
Related Documentation

You are advised to refer to the related documents for more technical information via the link below: <http://Support-Zhuhai Taichuan Cloud Technology Co., LTD.>

Table of Contents


1. Product Overview	5
2. Specifications	6
3. Access the Device	7
4. System Settings	9
4.1. Relay Setting	9
4.2. Ethernet Setting	9
4.3. WiFi Setting	10
4.4. Bluetooth Setting	10
4.5. Display Setting	11
4.6. No disturbing Setting	11
4.7. Theme Setting	12
4.8. Time Setting	12
4.9. Language Setting	12
4.10. Elevator Setting	13
4.11. About device	13
4.12. Intercom port	13
5. Engineering Setting	14
6. Android System Setting	14
7. Video Intercom	15
8. Smart Home	15
9. Add Camera	16
10. Smart Scene Settings	17
11. Install APK	18
12. Firmware Upgrade	19
13. Abbreviations	20
14. FAQ	21
15. Contact Us	22

1. Product Overview



TC-U9AIZK-A12A/Z3 is an Android based with a smooth touch-screen All in One smart control panel. It can be connected with Taichuan outdoor unit for audio/video communication, unlocking, and monitoring. Residents can communicate with visitors via audio/video call, and it supports unlocking the door remotely. It is more convenient and safer for residents to check the visitor's identity through its video preview function. It's inbuilt Tuya app for smart home control. Third-party apps are also available. TC-U9AIZK-A12A/Z3 is often applied to scenarios such as villas, apartments, and buildings.

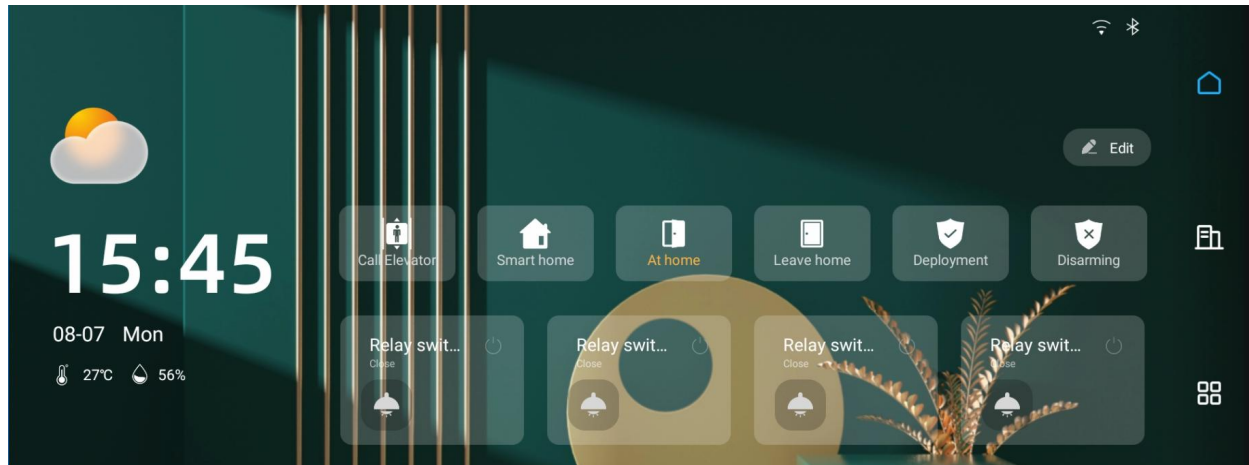
2. Specifications

Model	TC-U9AIZK-A12A/Z3
Image	
Housing Material	Alu.+PC
OS	Android 10
CPU	4 core Cortex-A53 1.6GHZ (Allwinner A133)
Flash	2G
Memory	8G
Display	12.3 Inch IPS LCD capacitive touch screen
Resolution	1920*720 Pixel
Ethernet	2xRJ45, 10/100Mbps adaptive
Wi-Fi	IEEE802.11 b/g/n
Zigbee	Tuya Zigbee 3.0
Bluetooth	5.0
Alarm Input	8CH
Relay	4
RS485	2
Thermometry Input	1
Light Sensor	Yes
Human IR Sensor	Yes
RH/Temp Sensor	Yes
TF card slot	Yes, max to 64G
USB	Type-C
Audio input	4 array mics
Audio output	2*2W stereo speakers
Power Supply	12V DC connector
POE	48V POE
Installation	Double 86 boxes with magnetic suction wall hanging
Operation Temperature	-10°C ~ +55°C
Operation Humidity	5 ~ 95%
Dimensions(W x H x D)	315.5x143.5x12 MM
Color	Black

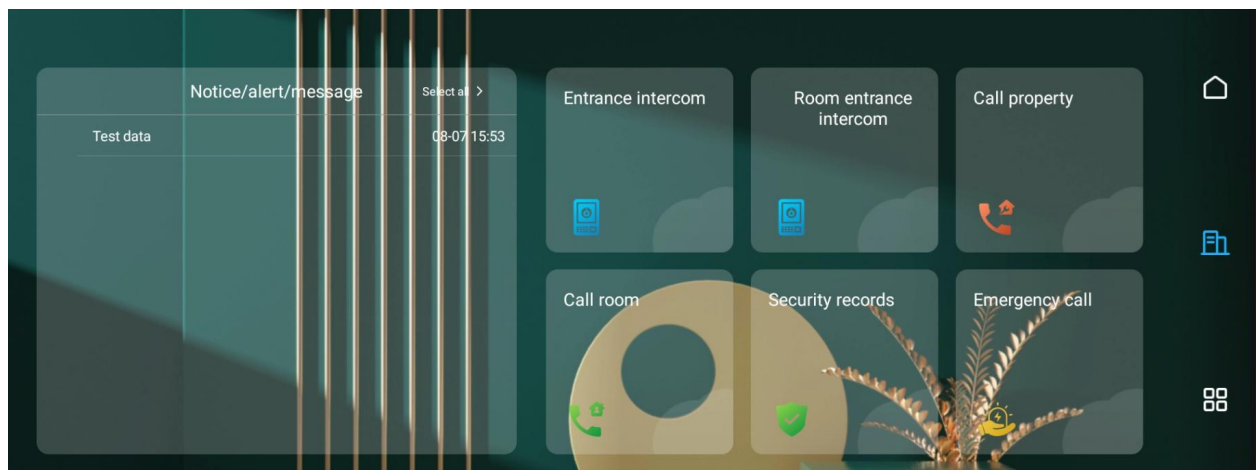
3. Access the Device

When you plug on power the device will boot up automatically .

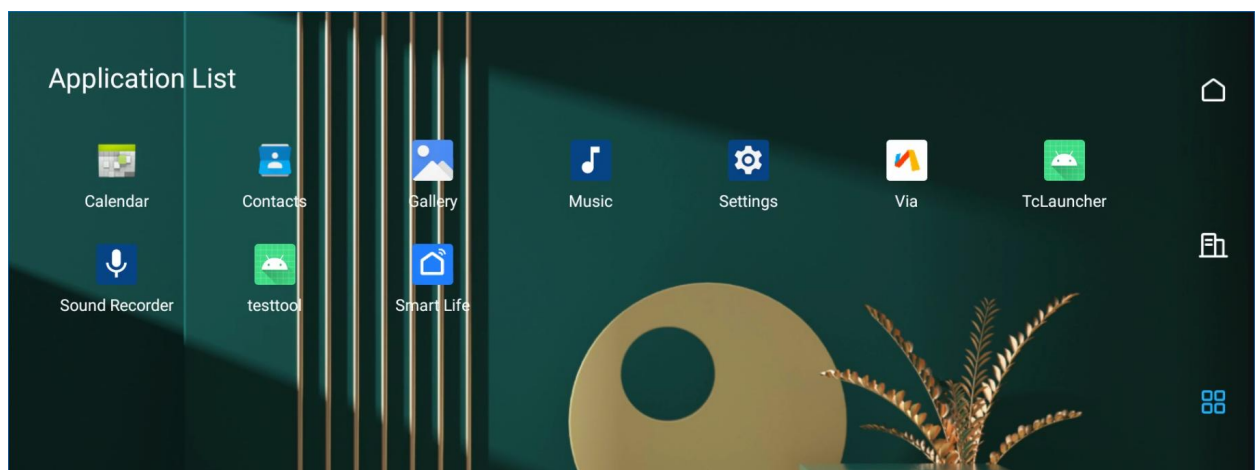
Main screen: weather state,time&date,temp&humidity;home automation&relay control.



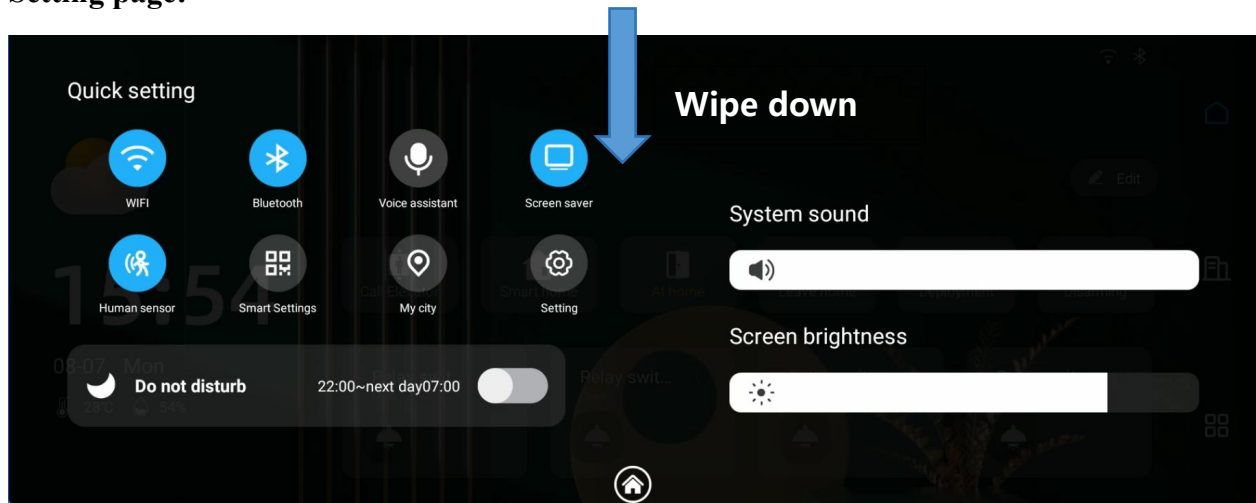
Intercom page: intercom record,view outdoor&doorbell camera,call property,call resident,etc.



App list: all the installed app will show here.



Setting page:



WiFi: on/off WiFi, long press to go to WiFi setting

Bluetooth: on/off Bluetooth, long press to go to Bluetooth setting

Voice assistant: OEM function, device built in 4 arrays mics

Screen saver: on/off screen saver, long press to go to display setting

Human sensor: on/off human sensor, when it's on, when people come closer the screen will on automatically

Smart settings:

Cloud intercom app: scan QR code to download Smartlife app

Cloud intercom binding: Use Smartlife app to scan the QR code to bind device for cloud call

Relay switch binding: Use Smartlife app to scan the QR code to bind relays for remote control

Zigbee: to initiate zigbee gateway

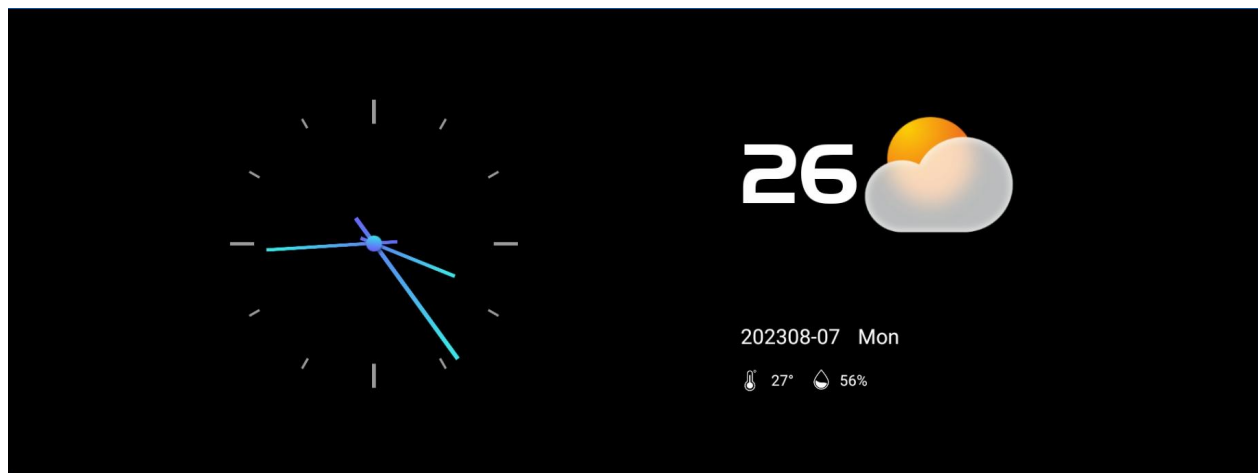
My city: to set city for temperature

Setting: system setting

Do not disturb: button to trigger **Do not disturb**, touch to set disturb period

System sound: to adjust system volume

Screen brightness: to adjust screen brightness

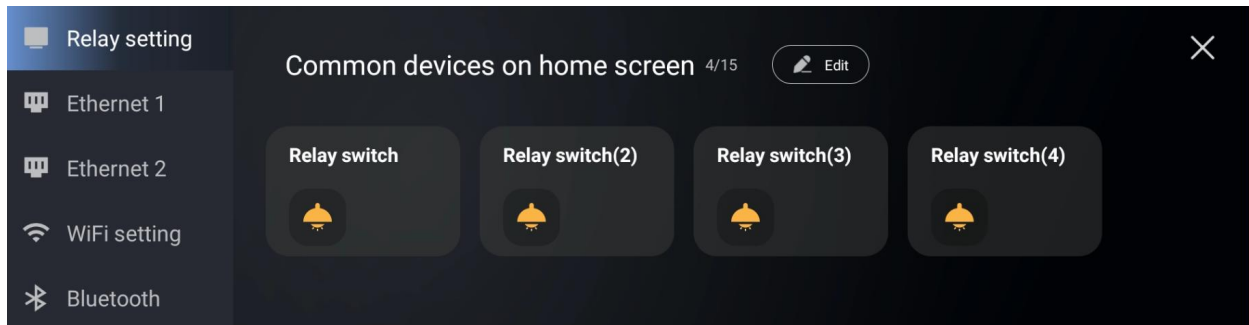


Screen saver

4. System Settings

4.1. Relay Setting

Taichuan All-in-one smart control panel inbuilt 4 relays for smart home control, you can connect light, HVAC, curtain which support relay control smart devices to allow you to control on the main screen or by your phone (need to bind relay QR code to Smartlife or Tuya).

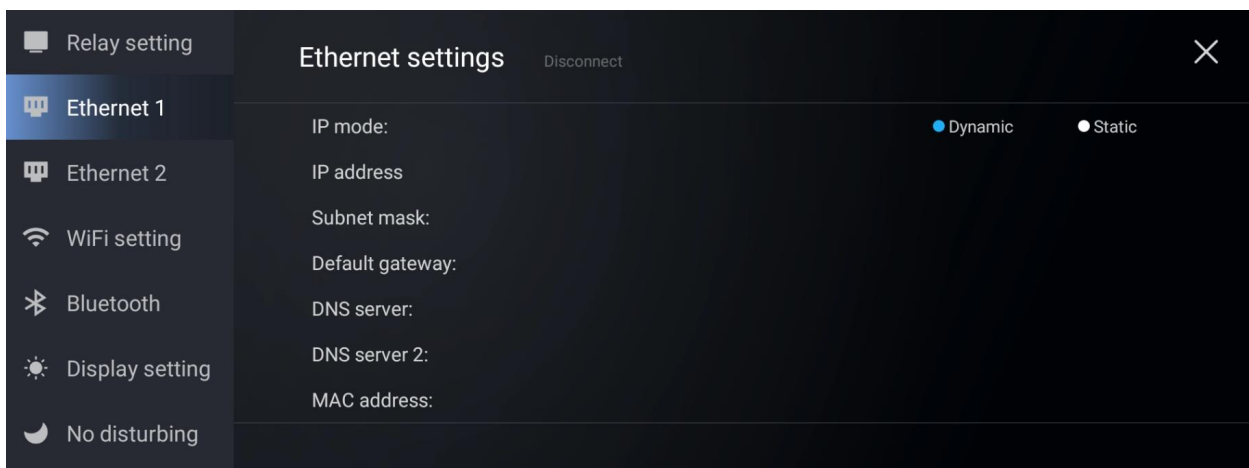


4.2. Ethernet Setting

Taichuan All-in-one smart control panel inbuilt 2 RJ45 ports to allow you to set one Ethernet for intercom and the other for internet.

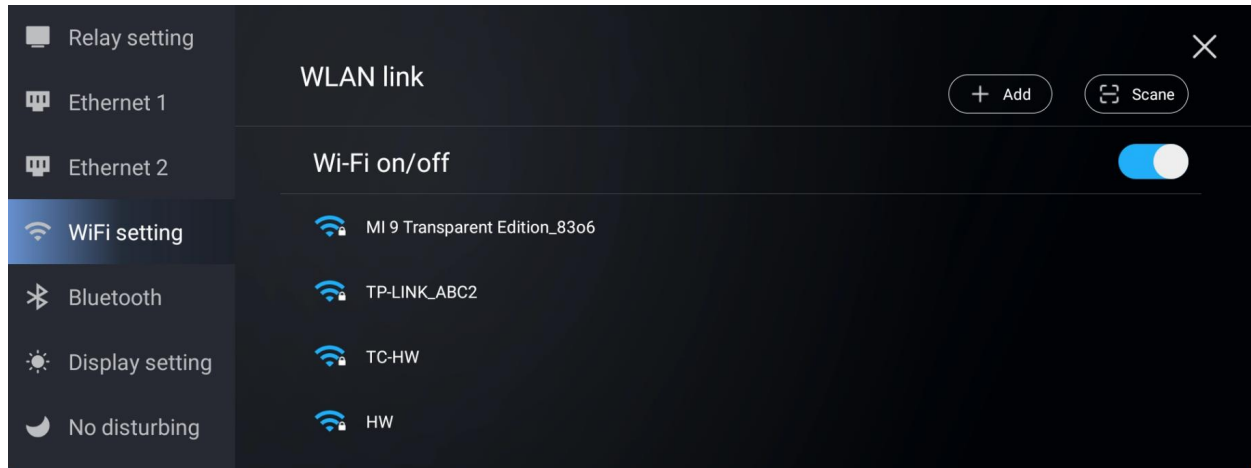
Parameter Set-up:

- **Static IP:** select the static IP mode by ticking the static check box. When static IP mode is selected, then the IP address, subnet mask, default gateway, and DNS servers address have to be manually configured according to your actual network environment.
- **IP Address:** set up the IP Address if the static IP mode is selected.
- **Subnet Mask:** set up the subnet Mask according to your actual network environment.
- **Default Gateway:** set up the correct gateway default gateway according to the IP address of the default gateway.
- **DNS server:** set up preferred or alternate DNS Server (Domain Name Server) according to your actual network environment. Preferred DNS server is the primary DNS server address while the alternate DNS server is the secondary server address and the door phone will connect to the alternate server when the primary DNS server is unavailable.



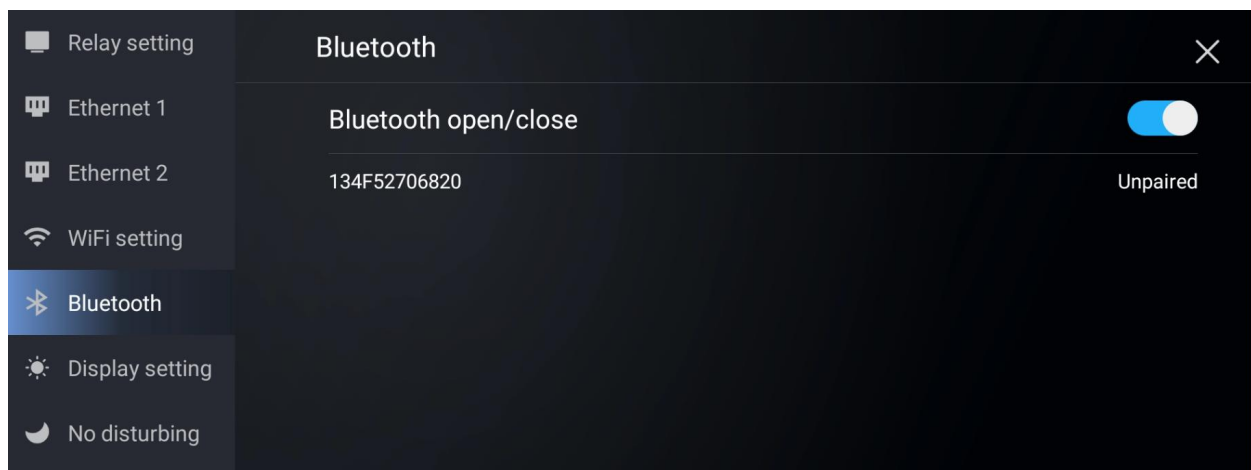
4.3. WiFi Setting

Taichuan All-in-one smart control panel can connect to WiFi network for mobile app remote control, cloud talk and home automation. To access WiFi connection, trigger WiFi switch, choose available WiFi network, enter password and access.



4.4. Bluetooth Setting

Taichuan All-in-one smart control panel inbuilt Bluetooth to Bluetooth devices.



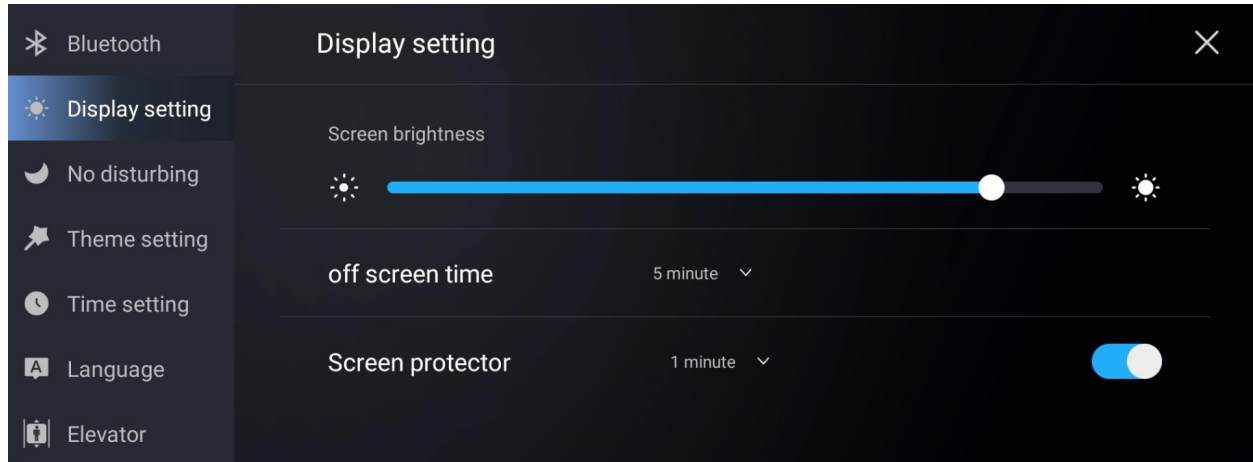
4.5. Display Setting

Parameter Set-up:

Screen brightness: to adjust screen brightness

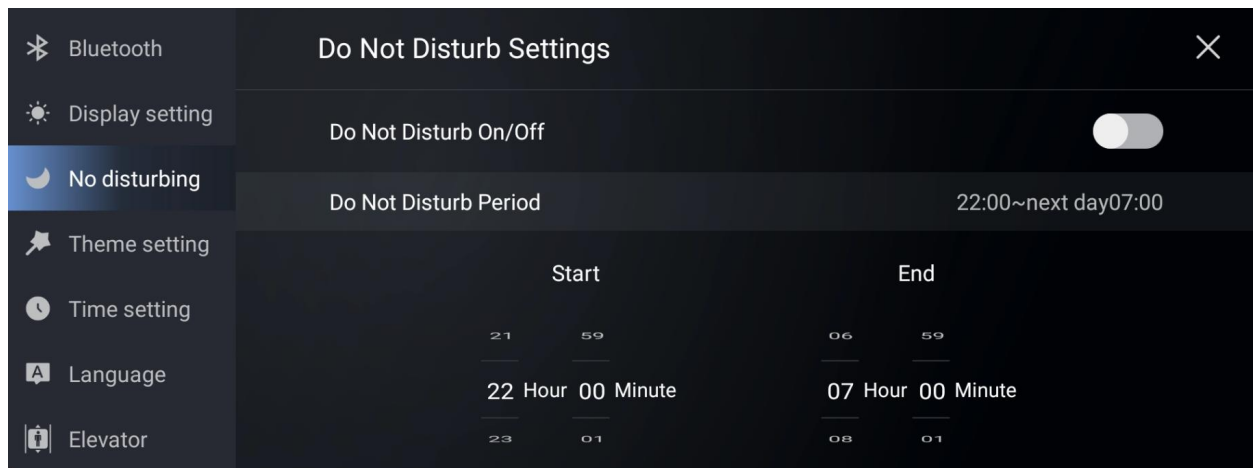
Off screen time: to set screen rest time, support to set 1 min,2 mins,5 mins,10 mins,30 mins

Screen protector: to trigger screen saver, support to set 1 min,2 mins,5 mins,10 mins,30 mins



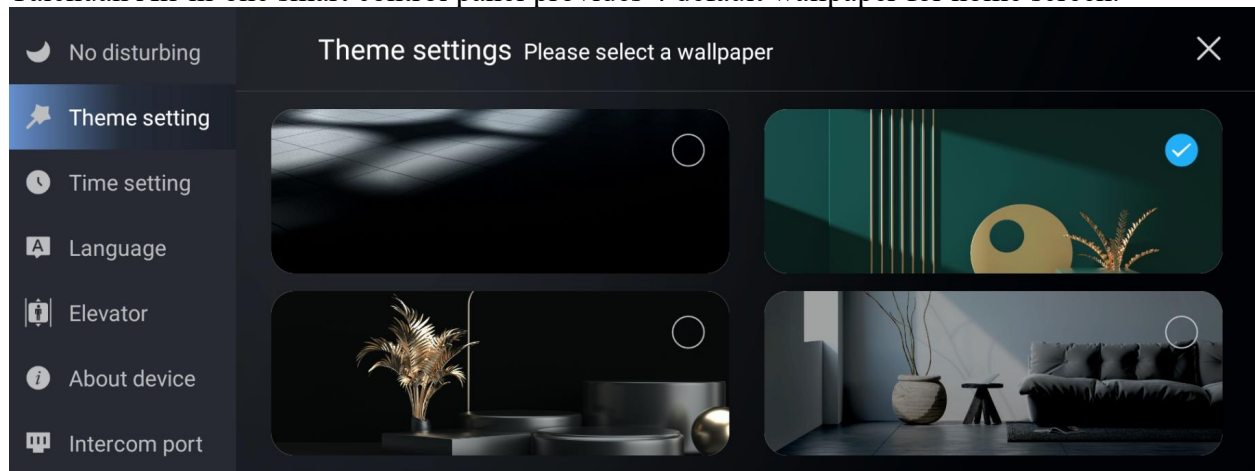
4.6. No disturbing Setting

You can set Do not disturb to avoid disturbing when sleep.



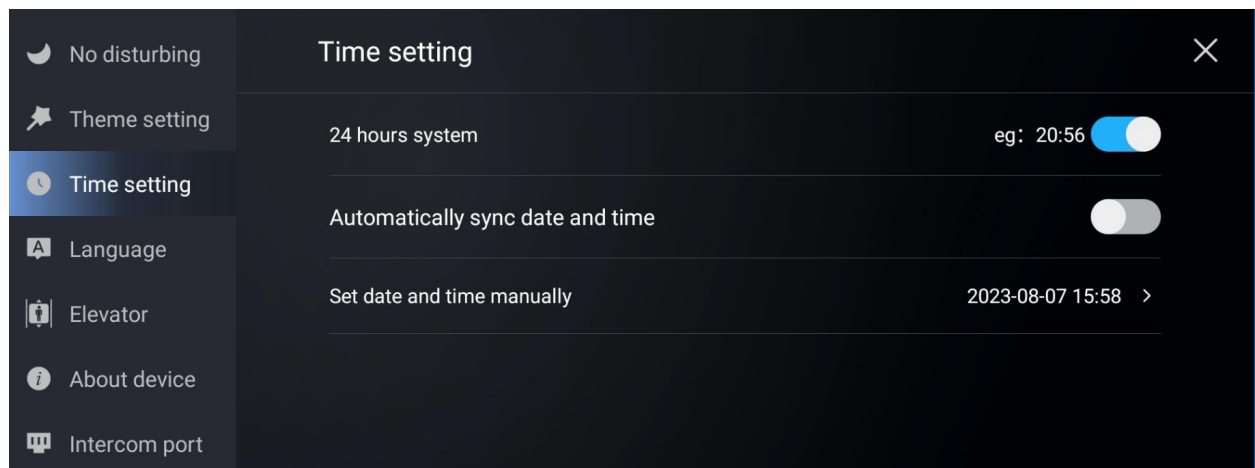
4.7. Theme setting

Taichuan All-in-one smart control panel provides 4 default wallpaper for home screen.



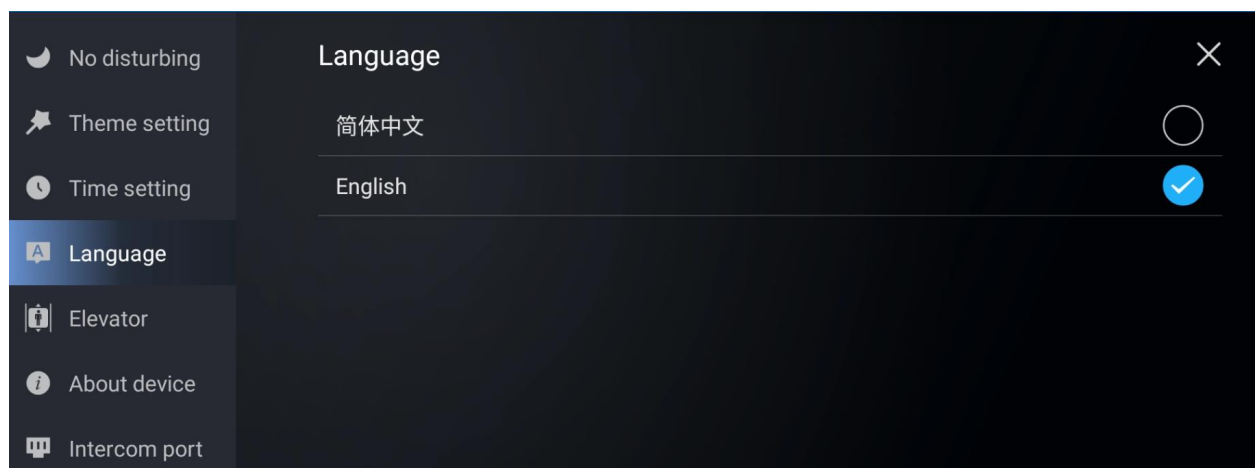
4.8. Time setting

Time format setting, automatically syncing and set time manually.



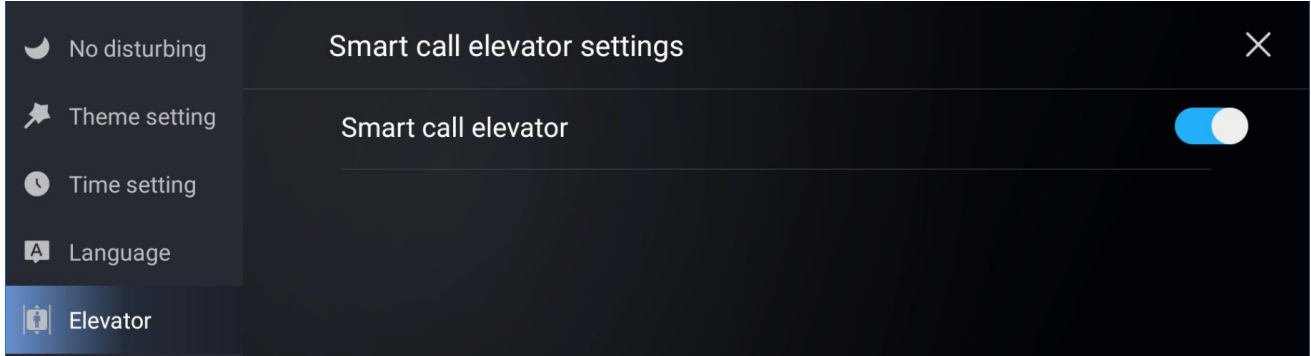
4.9. Language Setting

You can set or change the language for screen display, more languages is on the way.



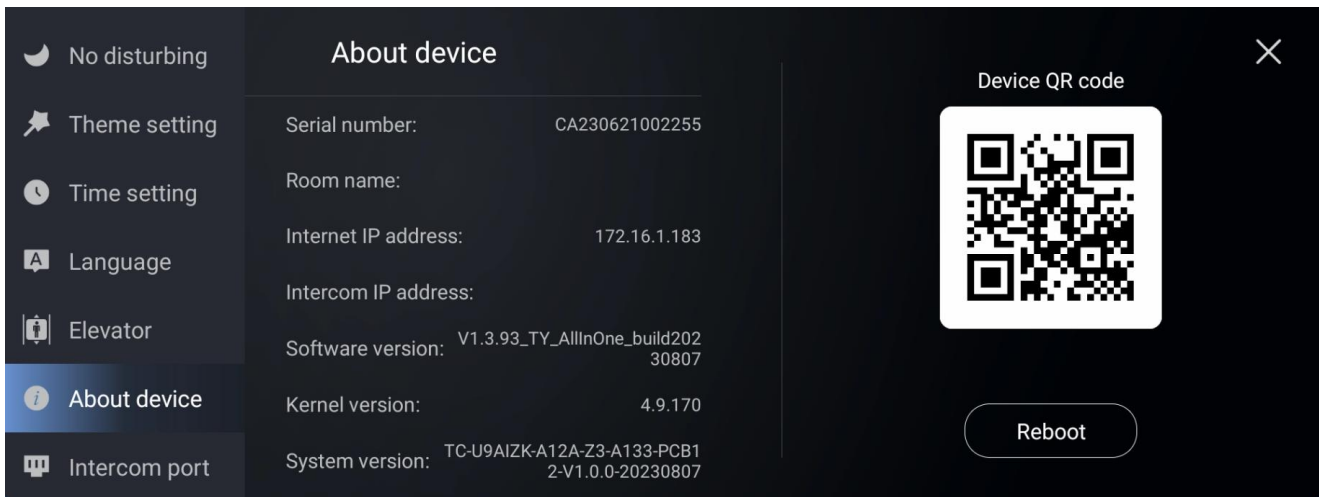
4.10. Elevator Setting

Taichuan All-in-one smart control panel inbuilt RS485 port for elevator control, this feature needs to work with elevator company for protocol docking.



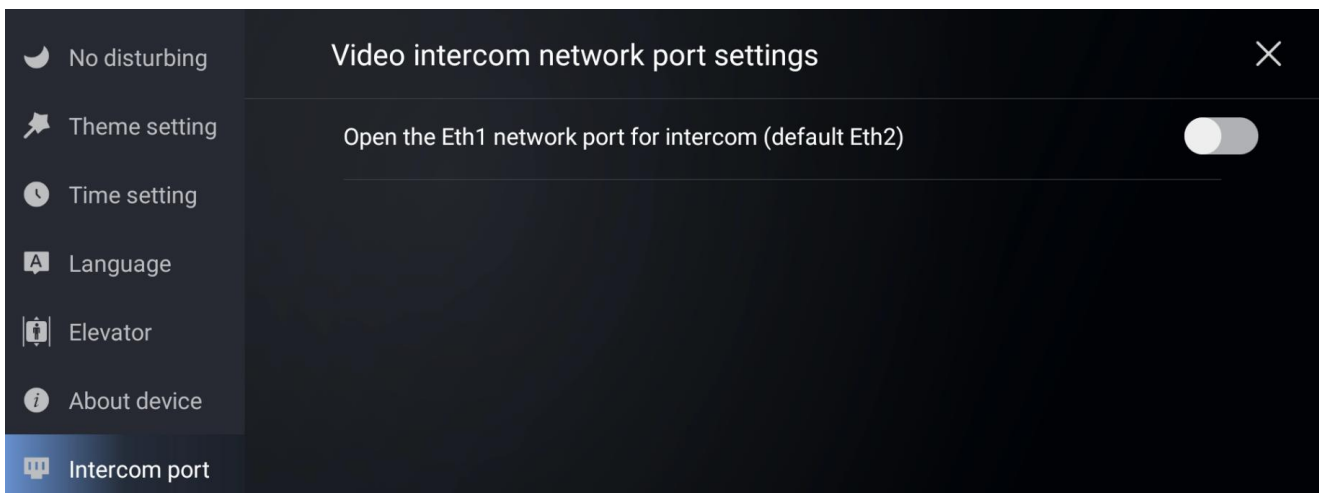
4.11. About device

Find out more equipment information on **About device**.



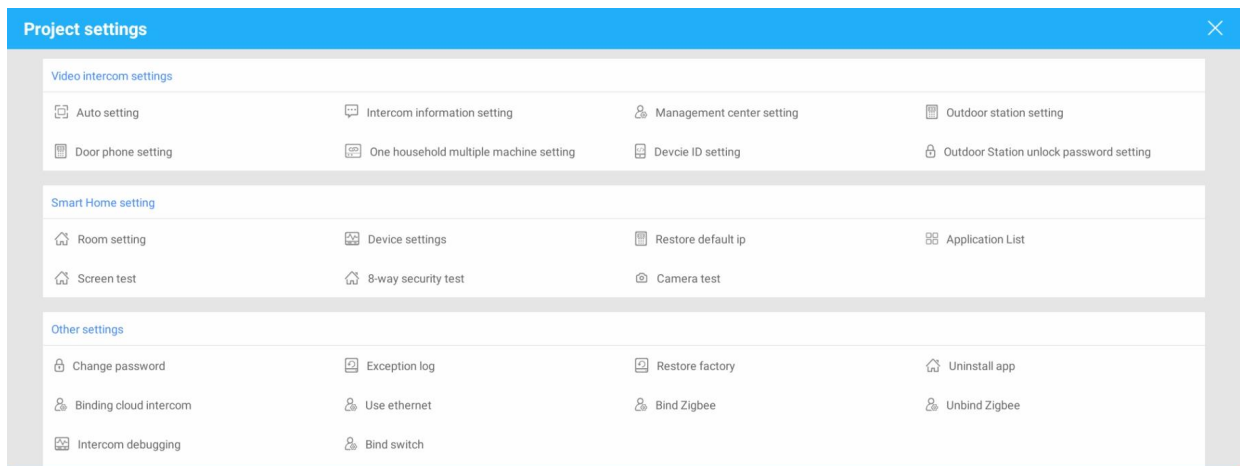
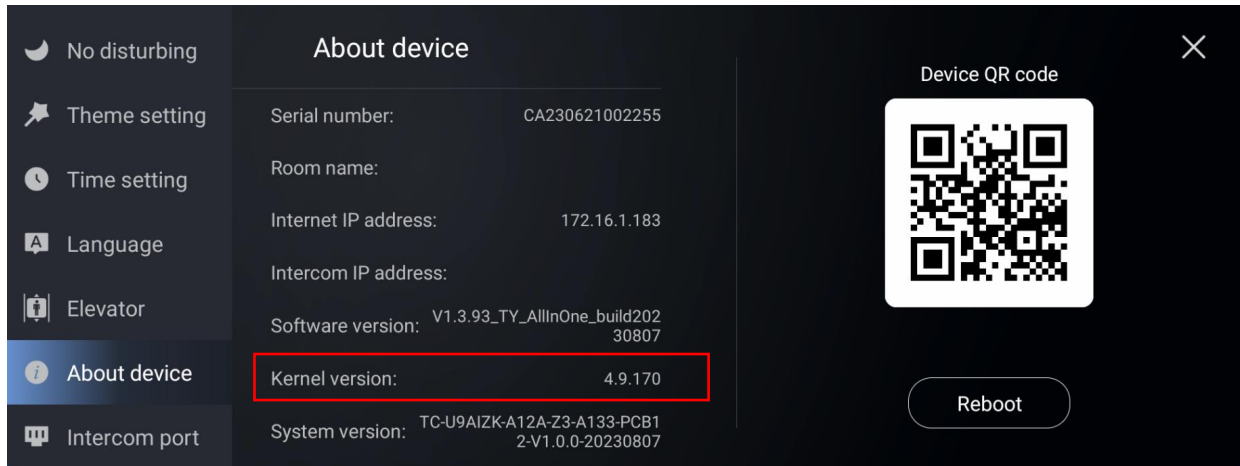
4.12. Intercom port

To define which port for intercom use. Default intercom port is Ethernet 2.



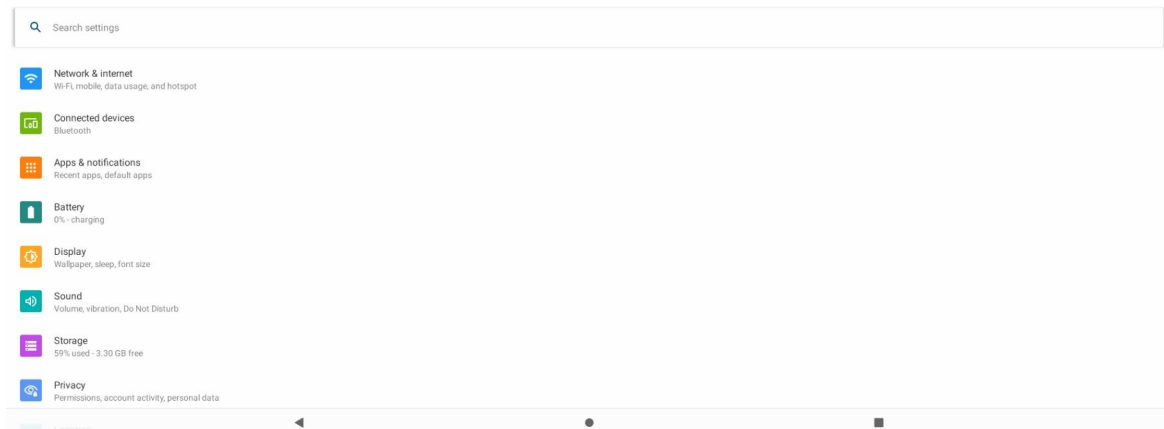
5. Engineering Settings

You can access to advanced settings for more configuration of video intercom settings, smart home settings and other settings on device **Settings > About device**, quickly tap **Kernel version** 3 times, enter password, the default password is **123456**.



6. Android System Settings

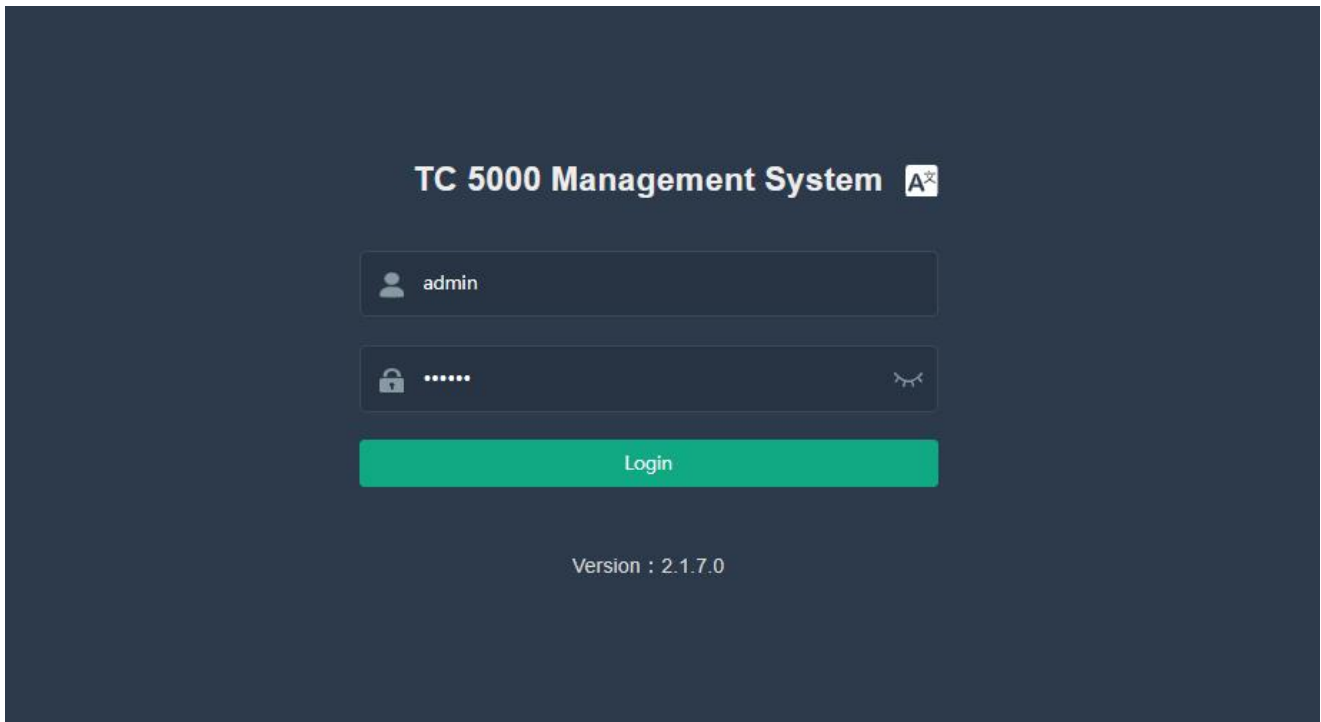
To access system settings of Android OS, go to **Application List > Settings**. Here is the universal settings of Android tablet, not means all the functions can work on the device.





7. Video Intercom

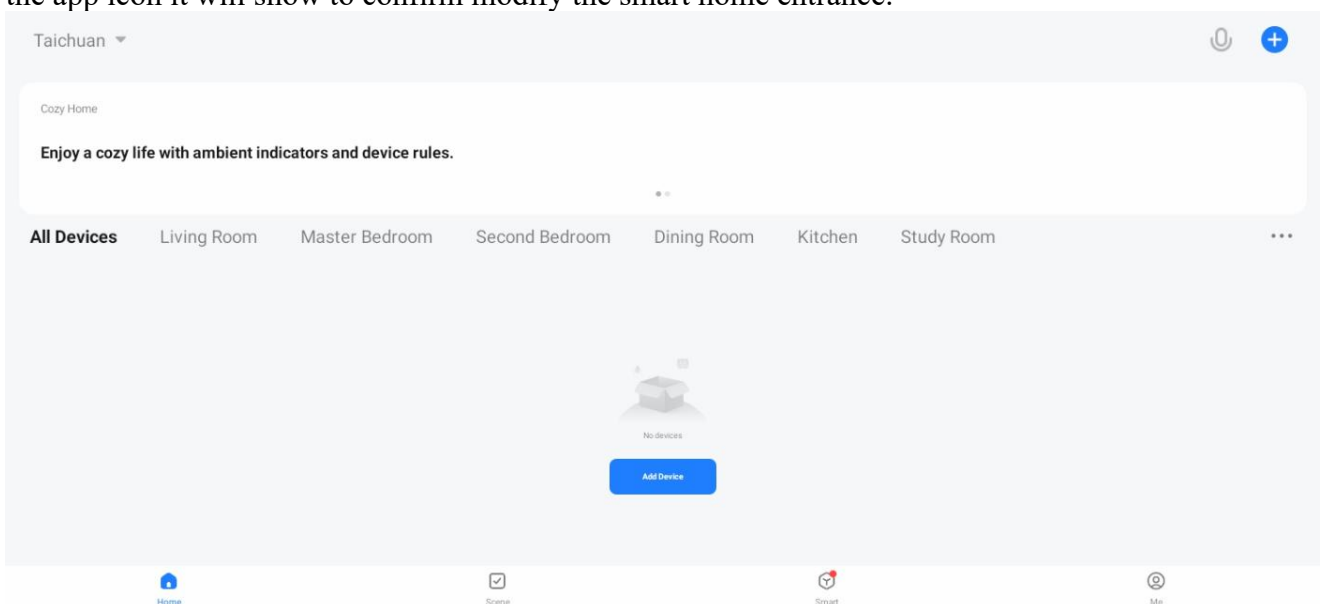
For intercom setting, please refer to intercom setting manual **TC5000 management center admin guide**.



8. Smart Home

Taichuan All-in-one smart control panel inbuilt **Smartlife**(default) or **Tuya smart home** app to manage your smart home devices.

Third party apps are supported, the **Smart Home** icon can be customized to your own app, long press the app icon it will show to confirm modify the smart home entrance.





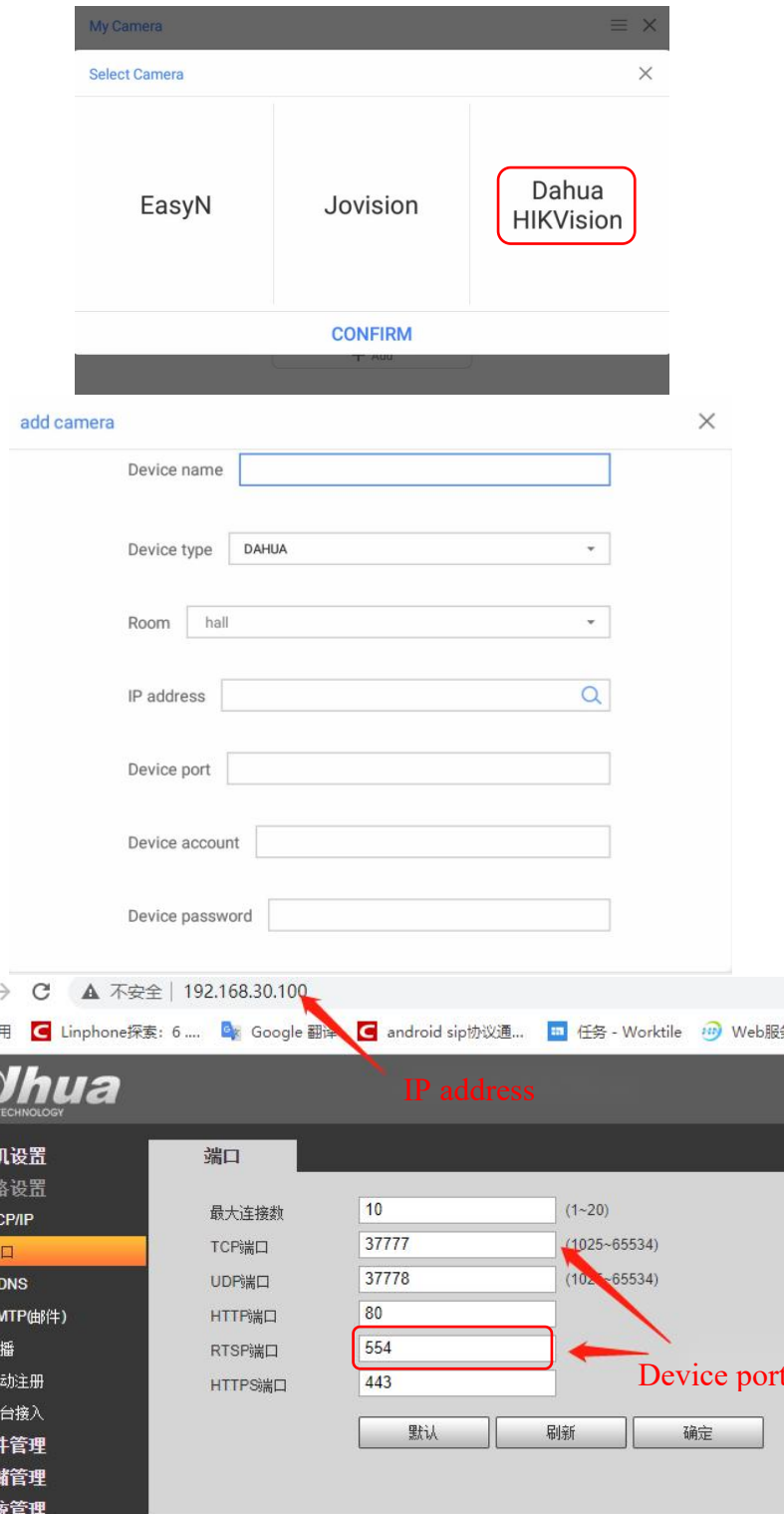
9. Add Camera (coming soon)

Taichuan All-in-one smart control panel supports third-party cameras, to add camera on device **Monitor Camera**, find **ADD CAMERA**, choose HK、DH (Hik,Dahua), input relative information and save.

Note:

Dahua default account: **admin** password: **abcd123456 or 12345678** device port: **554**(RTSP)

HIKvision default account: **admin** password: **hw12345678** device port: **2800**(Service)

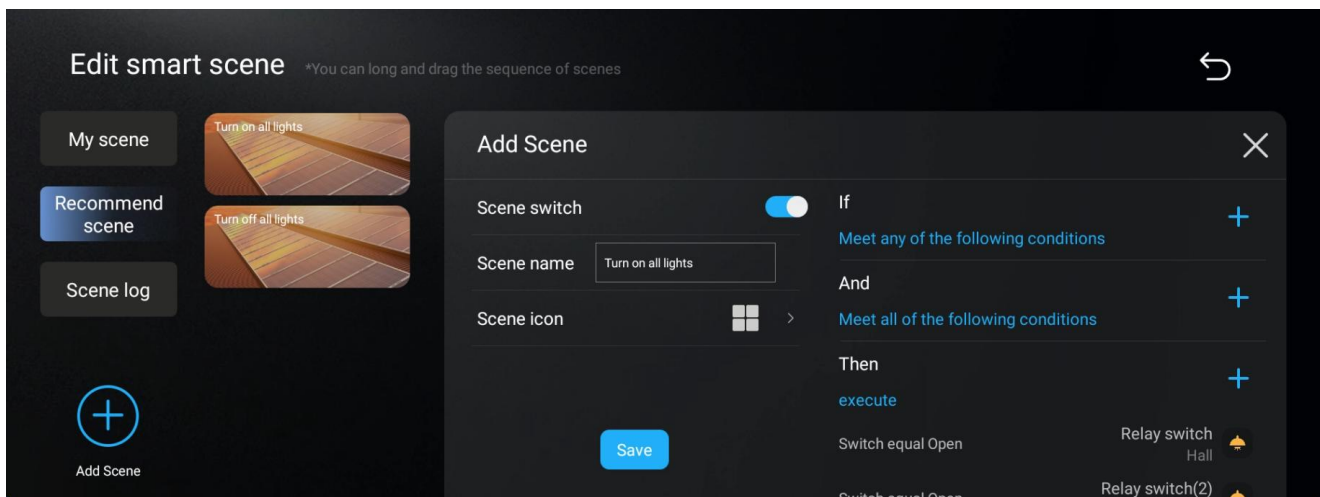


10. Smart Scene Setting

Taichuan All-in-one smart control panel supports smart home linkage, you can set different scenarios per your need on **Scene Mode**.

Parameter :

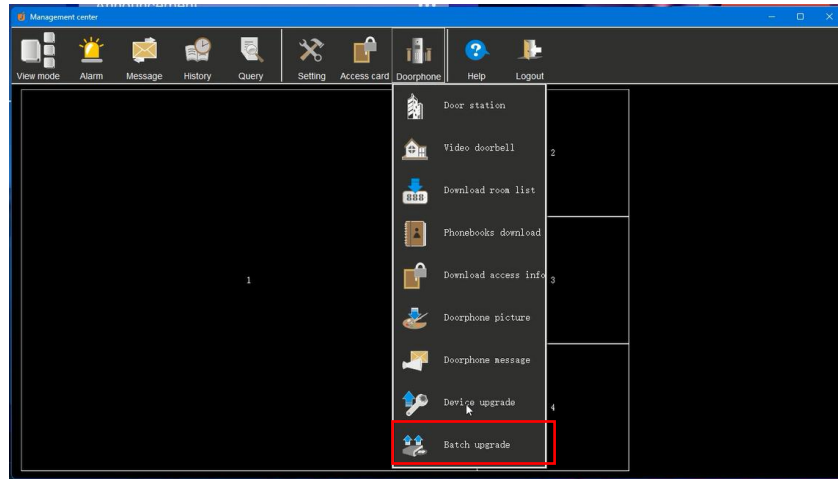
- **At home:** when trigger back home mode, the preset devices will open.
- **Leave home:** when trigger out home mode, the preset devices will close.
- **Deployment:** set the scenarios.
- **Disarming:** disarm the triggered alarms or sensors.



11. Install APK

Taichuan All-in-one smart control panel supports to install third-party apps, there are 4 main ways to install apps:

1. Via 3000 Management Center
2. Install APK through ADB environment command
3. Install APK through browser on monitor
4. Remote upgrade via management center (5000 Management Center)



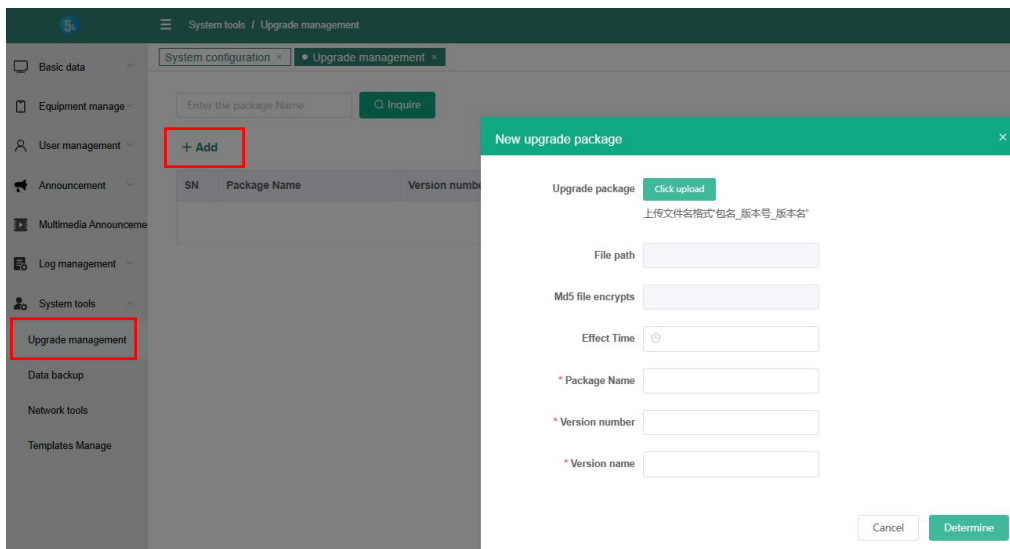
3000 Management Center

```

C:\Users\Administrator>adb connect 172.16.70.89:5678
* daemon not running; starting now at tcp:5037
* daemon started successfully
connected to 172.16.70.89:5678

C:\Users\Administrator>adb install XXX.apk
  
```

ADB command

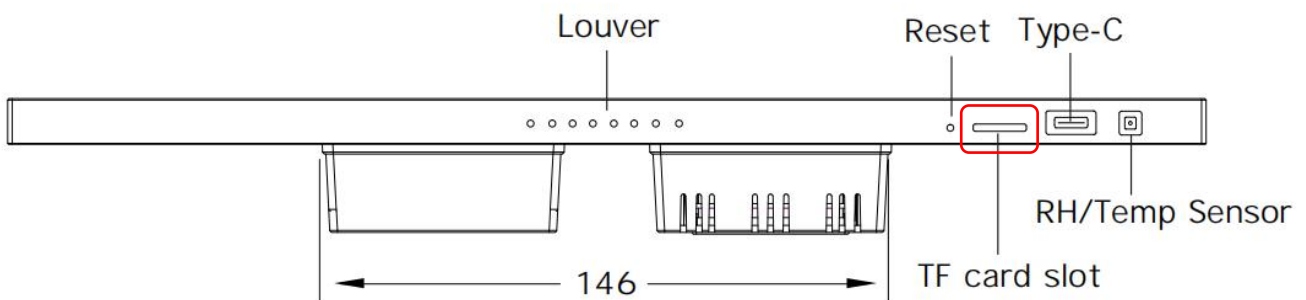
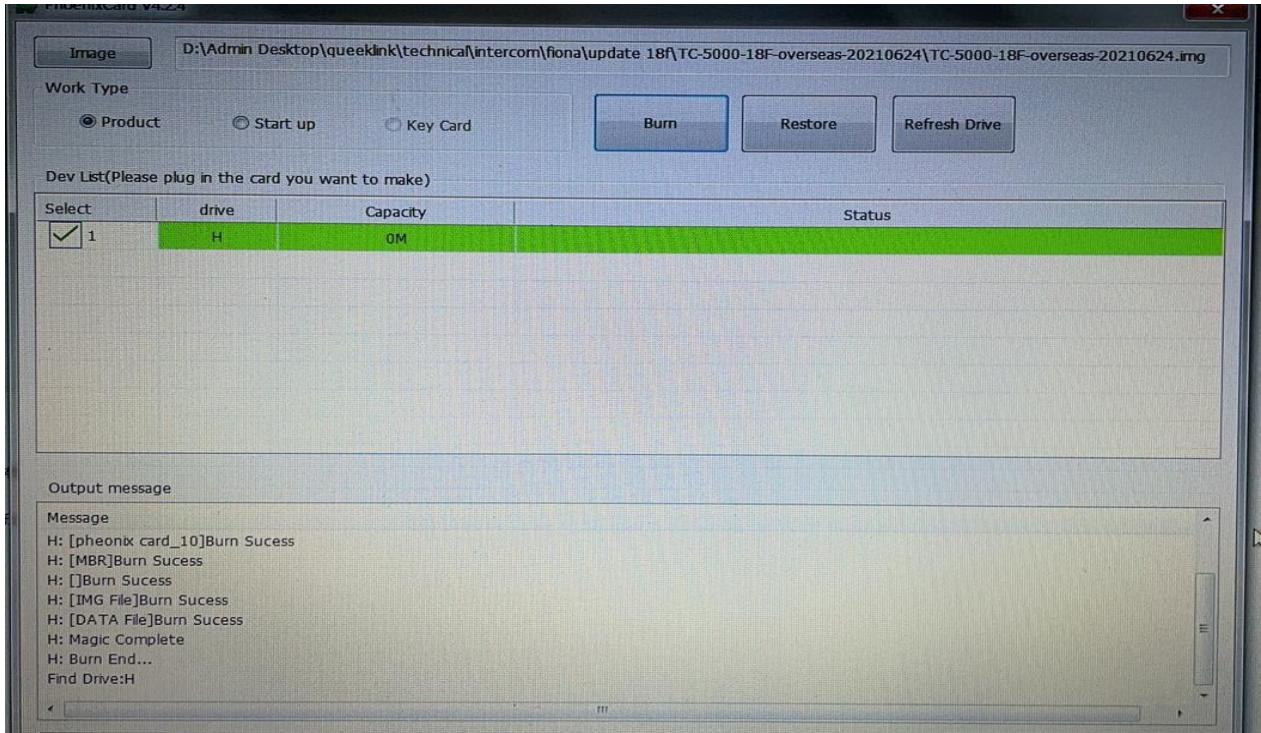


5000 Management Center

12. Firmware Upgrade

To upgrade firmware, download software “PhoenixCard” to your PC, insert empty SD card, unpack the firmware package, choose the firmware image and burn, when the loading bar turns green, means burn card successfully.

After you burn the card, insert the card to the TF card slot(device power off state),when power in it will automatically upgrade, when the loading bar turns green, it's successfully upgraded, after all the process must take out the card or it will upgrade again next time you turn on the device.





13. Abbreviations

ACS: Auto Configuration Server
Auto: Automatically
AEC: Configurable Acoustic and Line Echo Cancelers
ACD: Automatic Call Distribution
Autop: Automatical Provisioning
AES: Advanced Encryption Standard
BLF: Busy Lamp Field
COM: Common
CPE: Customer Premise Equipment
CWMMR: CPE WAN Management Protocol
DTMF: Dual Tone Multi-Frequency
DHCP: Dynamic Host Configuration Protocol
DNS: Domain Name System
DND: Do Not Disturb
DNS-SRV: Service record in the Domain Name System
FTP: File Transfer Protocol
GND: Ground
HTTP: Hypertext Transfer Protocol
HTTPS: Hypertext Transfer Protocol Secure Socket Layer
IP: Internet Protocol
ID: Identification
IR: Infrared
LCD: Liquid Crystal Display
LED: Light Emitting Diode
MAX: Maximum
POE: Power Over Ethernet
PCMA: Pulse Code Modulation A-Law
PCMU: Pulse Code Modulation μ -Law
PCAP: Packet Capture
PNP: Plug and Play
RFID: Radio Frequency Identification
RTR: Real-time Transport Protocol
RTSP: Real Time Streaming Protocol
MPEG: Moving Picture Experts Group
MWI: Message Waiting Indicator
NO: Normal Opened
NC: Normal Connected
NTP: Network Time Protocol
NAT: Network Address Translation
NVR: Network Video Recorder
ONVIF: Open Network Video Interface Forum
SIP: Session Initiation Protocol
SNMP: Simple Network Management Protocol
STUN: Session Traversal Utilities for NAT
SMTP: Simple Mail Transfer Protocol
SDMC: SIP Devices Management Center
TR069: Technical Report069
TCP: Transmission Control Protocol
TLS: Transport Layer Security



TFTR: Trivial File Transfer Protocol

UDP: User Datagram Protocol

URL: Uniform Resource Locator

VLAN: Virtual Local Area Network

WG: Wiegand

14. FAQ

Q1: How to obtain IP address?

A1: You can use the display screen to get the IP information, just check the IP address at basic settings, about equipment.

Q2: Do Taichuan devices support Onvif protocol?

A2: For now, only Taichuan indoor monitors support Onvif protocol. Door phone and outdoor panel not supports.

Q3: What is the resolution of TC-5000 indoor monitors?

A3: The ratio is 16:10, and resolution is 1280*800.

Q4: What operation system of TC-5000 series?

A4: TC-5000 monitors based on Android 6.0.

Q5: Can I install apps at Taichuan indoor monitor?

A5: Taichuan have indoor monitor based on Linux system and Android system. For Linux system devices (TC-3000 series), not support install third party app. For android system devices (TC-5000), you can install third party apps as your wish.

Q6: Can I connect electrical lock to indoor monitor?

A6: No, but you can connect electrical lock to outdoor panel, Taichuan outdoor panels have relay component.

Q7: Can I communicate other indoor monitor with indoor monitor?

A7: Taichuan device can communicate with each other, no matter it is indoor monitor or door phone. Of course indoor monitor can call to other indoor monitor.



15. Contact US

For more information about the product, please visit us at www.taichuan.com or feel free to contact us by

Sales email: globalmarket@taichuan.com

Technical support email: globalmarket@taichuan.com

Telephone: +86-756-8665853

We highly appreciate your feedback about our products

