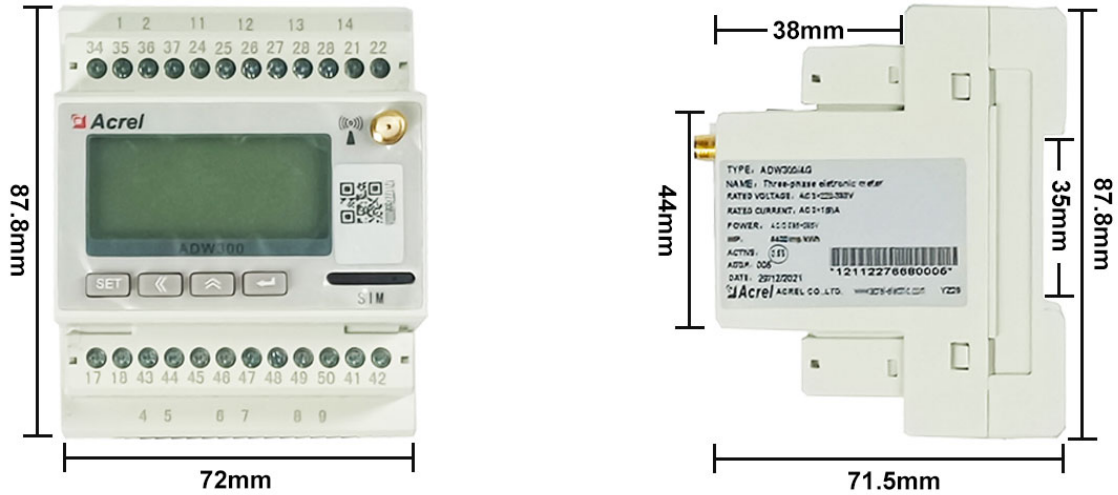


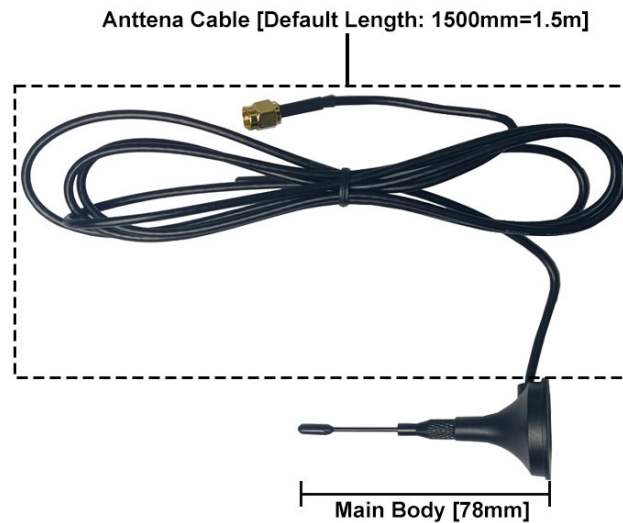
## 0. Installation Dimension

Dimension of necessary hardware including:

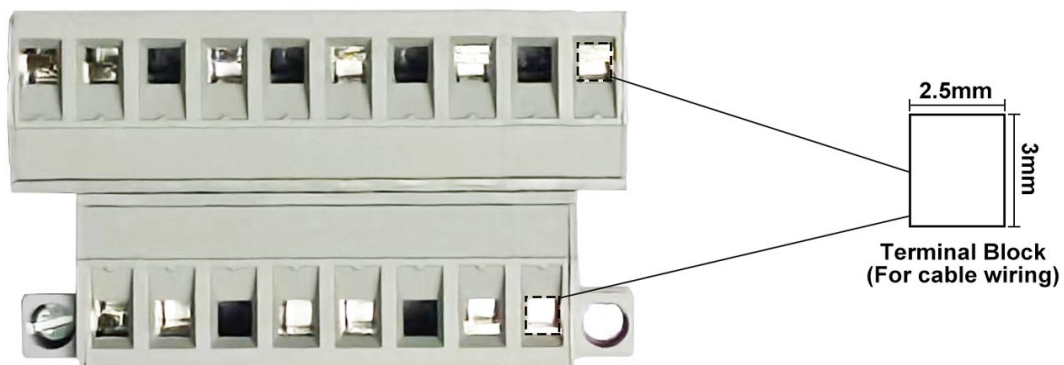
- (1) ADW300-WF/C 3-phase WiFi Wireless Energy Meter (Main Body+Terminal Block+Antenna)
- (2) AKH-0.66/K K- Series Current Transformer (Main Body + Output Cable)



(1) Dimension of Main Body of ADW300-WF/C



(1) Dimension of WiFi Antenna of ADW300-WF/C

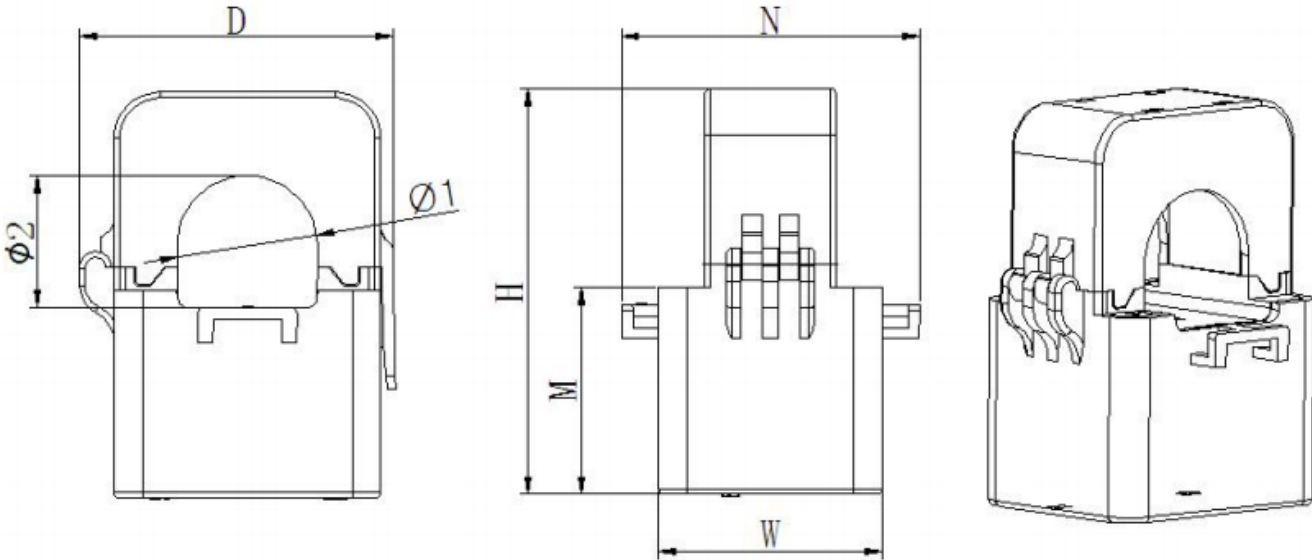


(1) Dimension of Terminal Block of ADW300-WF/C

## 0. Installation Dimension

Dimension of necessary hardware including:

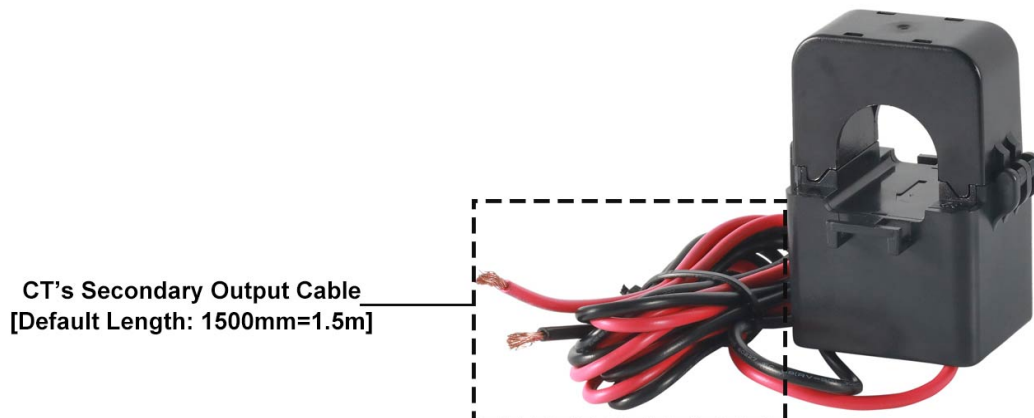
- (1) ADW300-WF/C 3-phase WiFi Wireless Energy Meter (Main Body+Terminal Block+Antenna)
- (2) AKH-0.66/K K- Series Current Transformer (Main Body + Output Cable)



Note: Primary current flow from P1 to P2. The black second wiring is S2, the red is S1. The outlet length is  $1m \pm 10cm$ .

Type \ Size (mm)	Outline size					Through size		Tolerance
	W	H	D	M	N	Φ1	Φ2	
K-Φ24	39	70.5	55	36	52	24.5	23	±1
K-Φ36	42.5	81.5	67	40	56	33.5	35	
K-Φ50	46.5	110	90	54	66.5	47	52	

(2) Dimension of Main Body of AKH-0.66/K K- Series



(2) Dimension of Secondary Output Cable of AKH-0.66/K K- Series

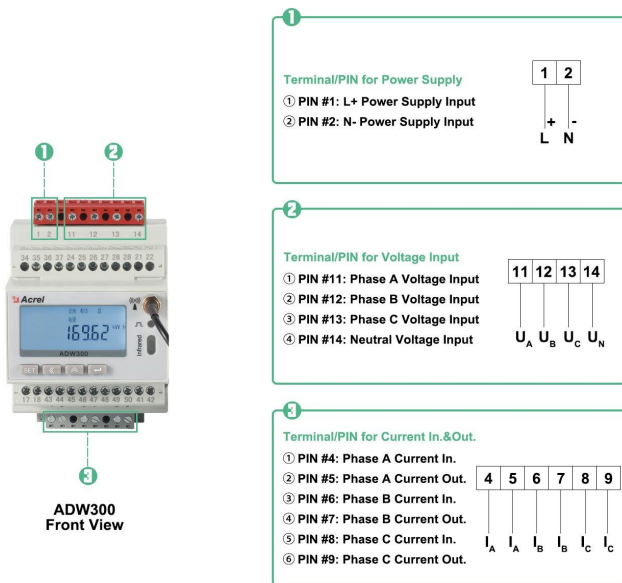
## 1. Wiring Illustration

Only 3 parts of wiring are necessary for ADW300-WF/C 3-phase WiFi Wireless Energy Meter.

- (1) Auxiliary Power Supply: For power supply of ADW300-WF/C, use PIN 1,2 on ADW300-WF/C, and be aware the volage level of auxiliary power supply must be **within range of 85~265Vac/Vdc**.
- (2) Voltage Input: Use PIN 11, 12, 13, 14 on ADW300-WF/C for 3-phase voltage signal input
- (3) Current input: Use PIN 4,5,6,7,8,9 on ADW300-WF/C paired with AKH-0.66/K K- Series CTs for current wiring (PIN 4, 6, 8 on ADW300-WF/C connected to red wire of 3 CTs respectively for 3-phase current input, PIN 5, 7, 9 on ADW300-WF/C connected to black wire of 3 CTs respectively for 3-phase current output)

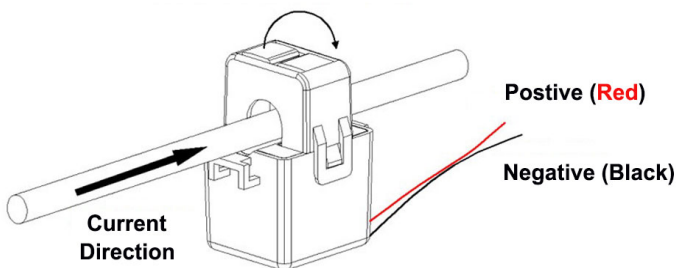
Noted #1: Make sure the antenna of ADW300-WF/C was covered by WiFi stable signal from the WiFi rounter whose WiFi account name and password allign to the configuration in ADW300-WF/C. [Can preset a WiFi account name and password in factory manufacturing stage. Customer could also change the WiFi configuration in ADW300-WF/C by using RS485 to USB converter and "Acrel ADW300 Adjustment Software". For more detail, contact with loki@acrel.cn]

Noted #2: **The clamp-on direction of CTs must be according to the actual current direction.**

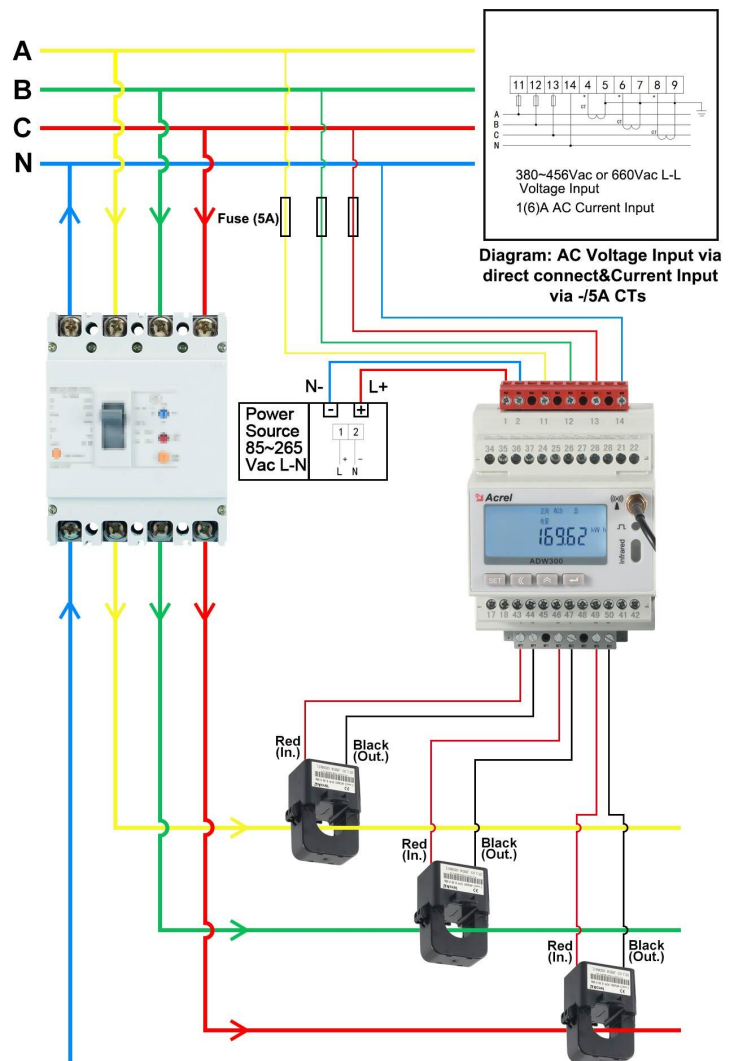


PIN Overview of ADW300

Clamp-on direction of CTs according to actual current direction



Noted for Clamp-on direction of CTs



Current&Voltage&Power Supply Wiring of ADW300

## 2. System Operation

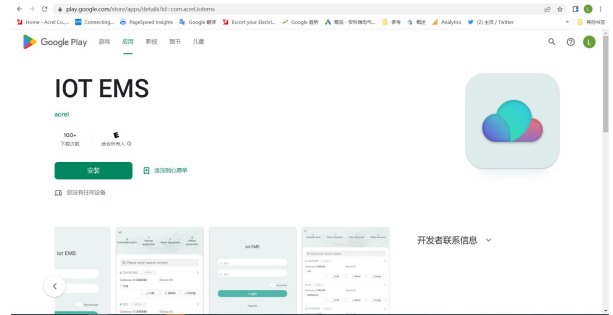
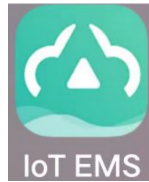
After correctly installing, wiring and powering up the Acrel devices, there are 4 steps to bind these devices with Acrel System before formally using the system:

- (1) Step 1 - Download IoT EMS APP on your Mobile Phone;
- (2) Step 2 - Register and login your own account.
- (3) Step 3 - Create a new Project
- (4) Step 4 - Add devices to your new Project (Recommend to add by using APP)

**Extra Noted:** Acrel IoT EMS APP (for Mobile) and IoT EMS WEB (for PC) share the same data and account, once add the devices using APP, we can check the data on either computer using IoT EMS WEB or on mobile phone using IoT EMS APP.

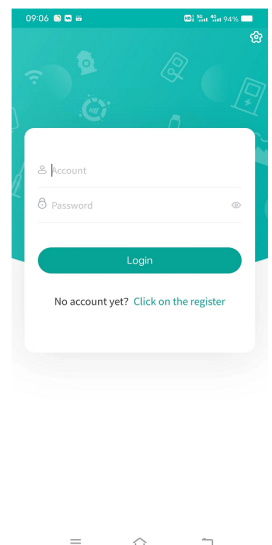
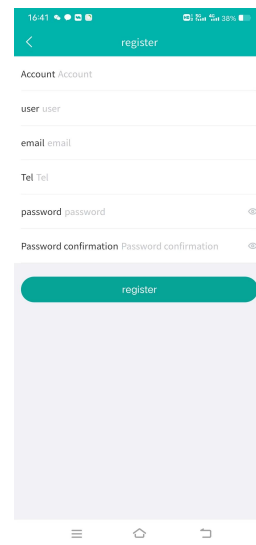
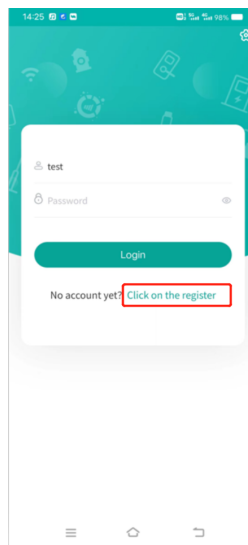
### (1) Download IoT EMS APP:

- Download Link (Android): <https://play.google.com/store/apps/details?id=com.acrel.iotems>
- Download (IOS): Search IoT EMS



### (2) Register your own Account:

- Click on register
- Enter related information for registering account
- Login with your new account by entering "Account" and "Password" you just set



## 2. System Operation

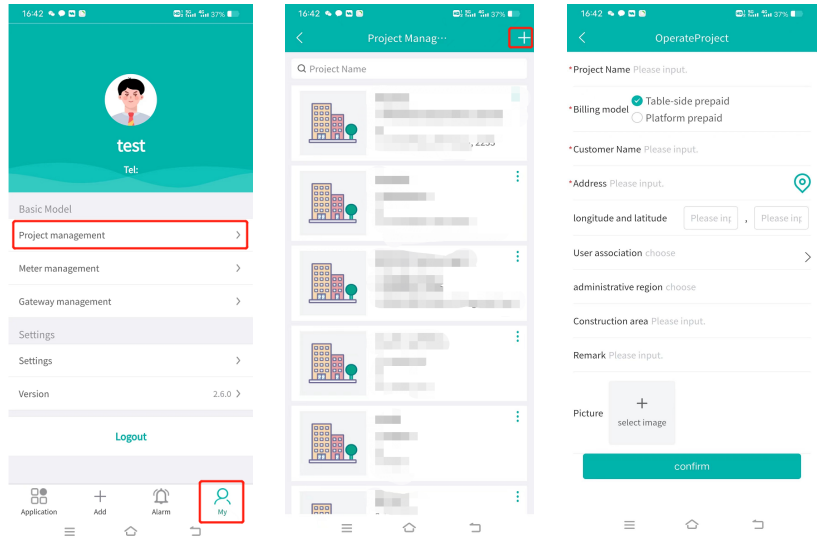
After correctly installing, wiring and powering up the Acrel devices, there are 4 steps to bind these devices with Acrel System before formally using the system:

- (1) Step 1 - Download IoT EMS APP on your Mobile Phone;
- (2) Step 2 - Register and login your own account.
- (3) Step 3 - Create a new Project
- (4) Step 4 - Add devices to your new Project (Recommend to add by using APP)

**Extra Noted:** Acrel IoT EMS APP (for Mobile) and IoT EMS WEB (for PC) Share the same data and account, once add the devices using APP, we can check the data on IoT EMS WEB on PC.

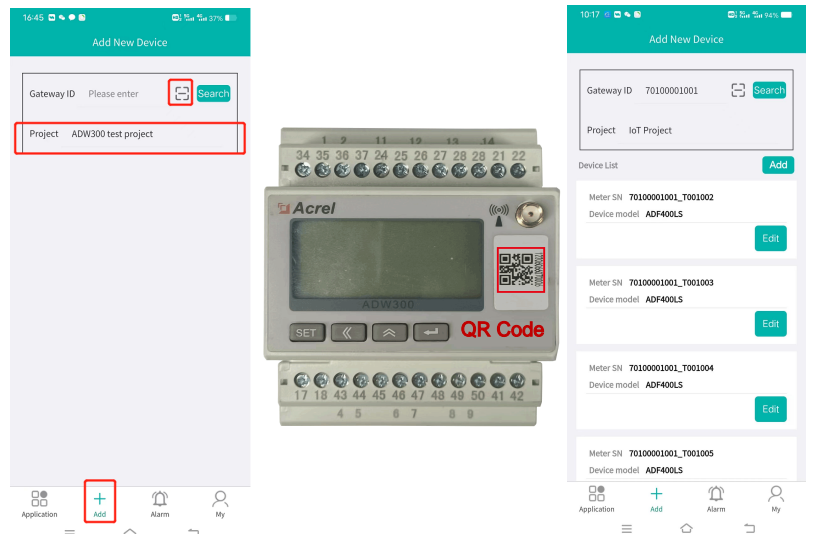
### (3) Create a new Project:

- "My" "Project management"
- Click "+" icon on the right top
- Choose "Platform prepaid" and fill in other information marked by \*



### (2) Add Devices to Project:

- Enter "Add" interface
- Select "Project"
- Click "QR Code" scanning icon - Scan the QR Code on ADW300
- Automatically recognize the devices type and SN code



### 3. Acrel IoT Energy Monitoring System (Partail Introduction)

Acrel IoT Energy Monitoring System could be access in 2 different ways:

(1) Access through WEB on your computer.

Access port: <https://iot.acrel-eem.com/>

(2) Access through APP on your mobile phone

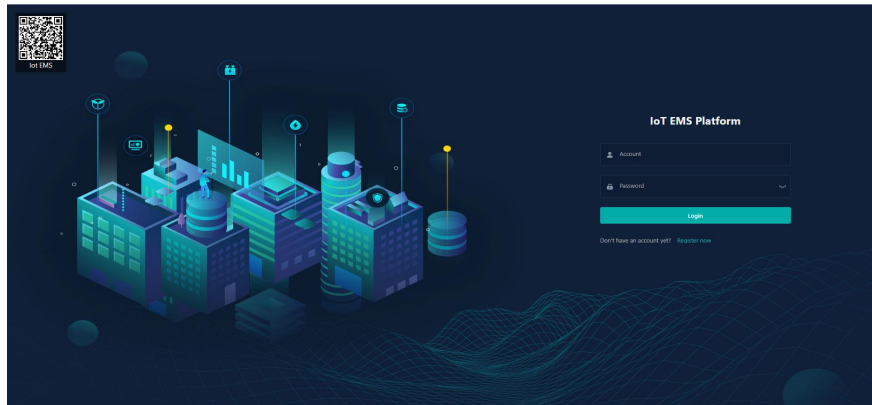
Download Link: <https://play.google.com/store/apps/details?id=com.acrel.iotems>

(1) WEB Accesss (Computer):

Access Port: <https://iot.acrel-eem.com/>

Account Name: (Enter yours)

Account Password: (Enter yours)

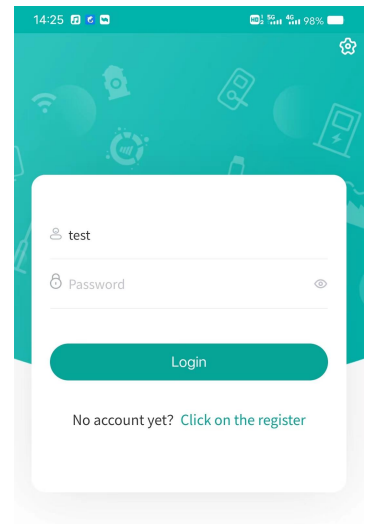
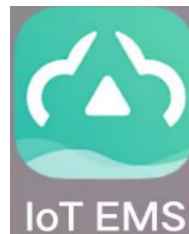


(2) APP Accesss (Mobile):

Download Link: <https://play.google.com/store/apps/details?id=com.acrel.iotems>

Account Name: (Enter yours)

Account Password: (Enter yours)

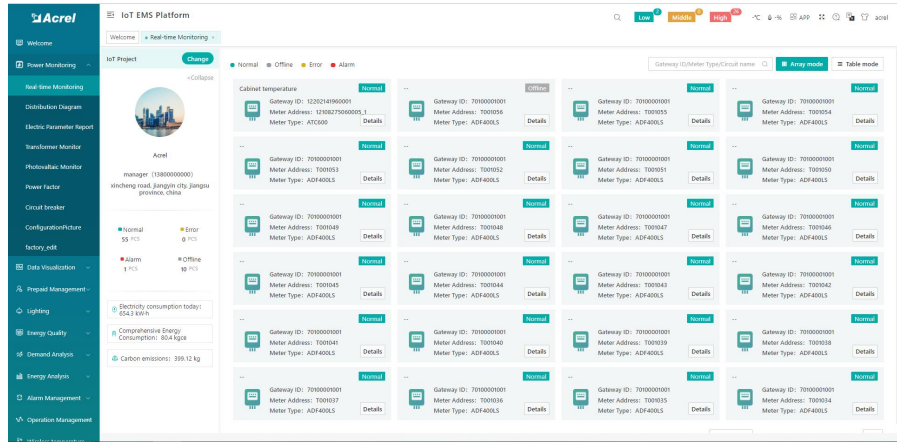


### 3. Acrel IoT Energy Monitoring System (Partail Introduction)

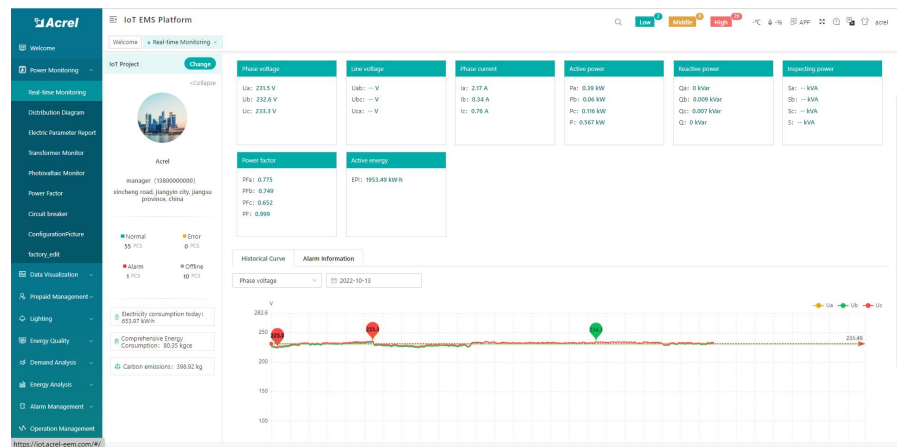
Main Function of WEB side System:

- (1) Devices List (2) History Curve (3) Electricity Parameters Report (4) Energy Consumption Report (Daily, Monthly, Yearly) (5) User Report

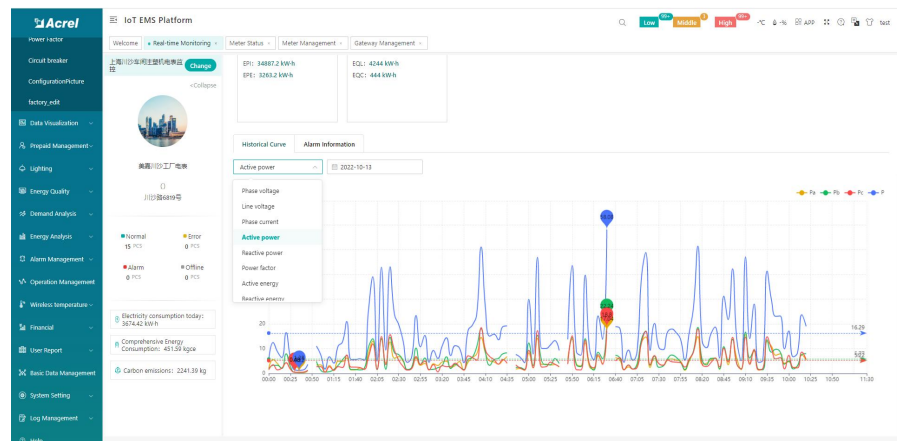
(1) Devices List: Showing the overall devices connected to Acrel System and were bond to certain project. SN code, Online-Offline status, devices model and other necessary information will be shown here.



(2) History Curve: Showing the daily history data curve of all the data that could be collected and upload by energy meter or other basic metering devices.



(2) History Curve: By selecting the items of "data" and "electricity parameter", platform can show the history curve of different data and date.

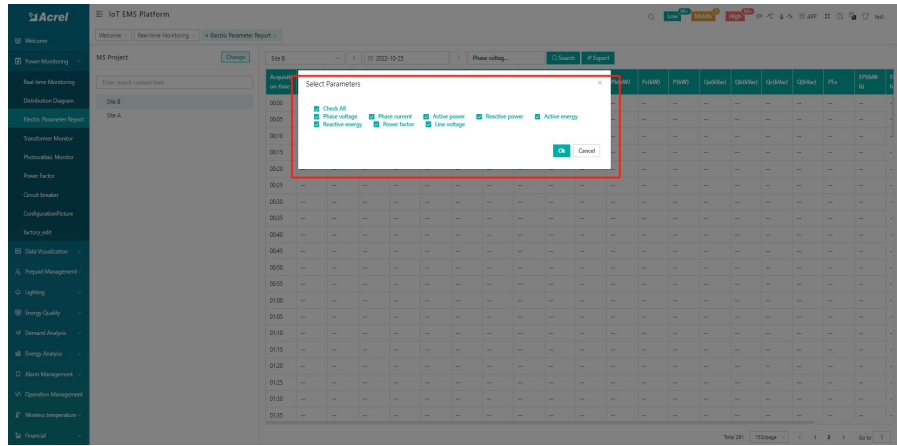


## 6. Acrel IoT Energy Monitoring System (Partail Introduction)

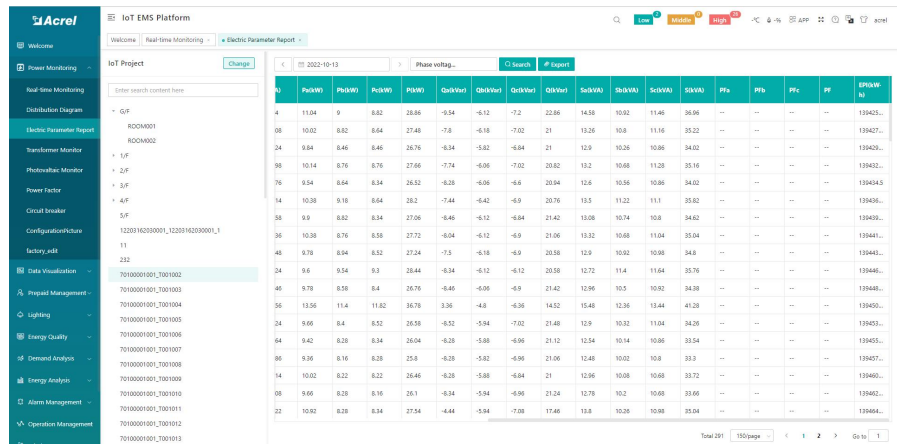
Main Function of WEB side System:

- (1) Devices List (2) History Curve (3) Electricity Parameters Report (4) Energy Consumption Report (Daily, Monthly, Yearly) (5) User Report

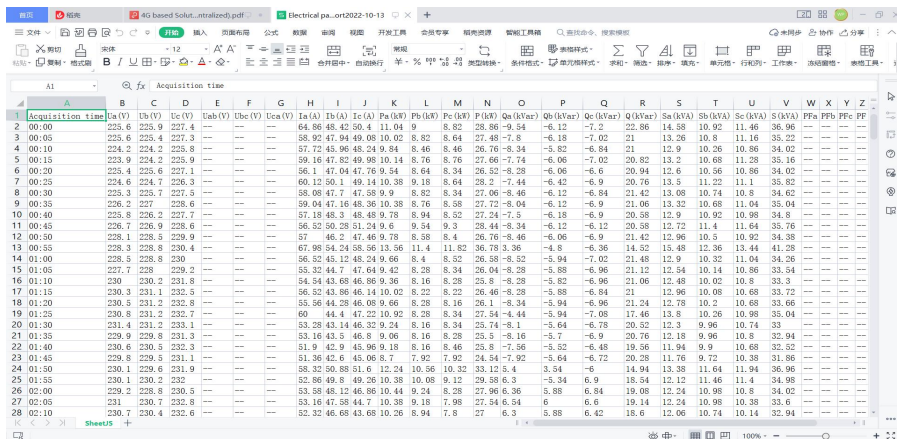
(3) Electricity Parameters Report:  
 Select the "electricity parameters" that you want to show in this report



(3) Electricity Parameters Report: All the electricity parameters that could be collected by certain energy meter will showed as a report here.



(3) Electricity Parameters Report:  
 Report on platform could be exported in "Excel" format to your computer for a brief storage when accessing the IoT EMS WEB platform.



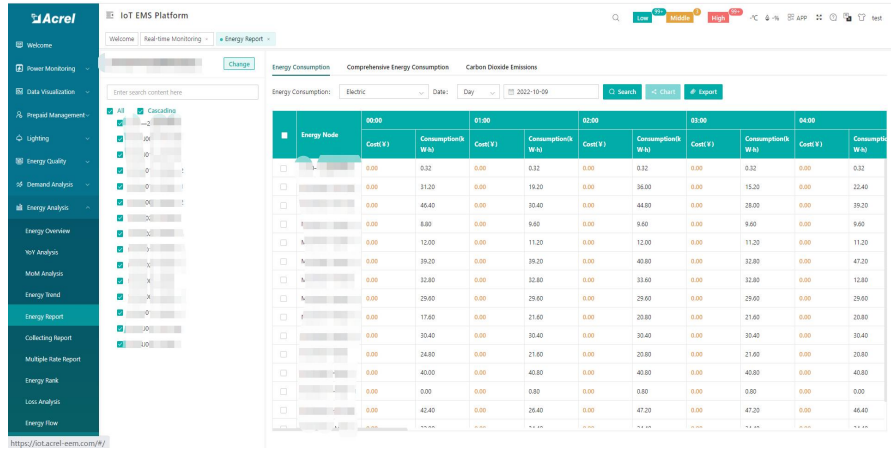


### 3. Acrel IoT Energy Monitoring System (Partail Introduction)

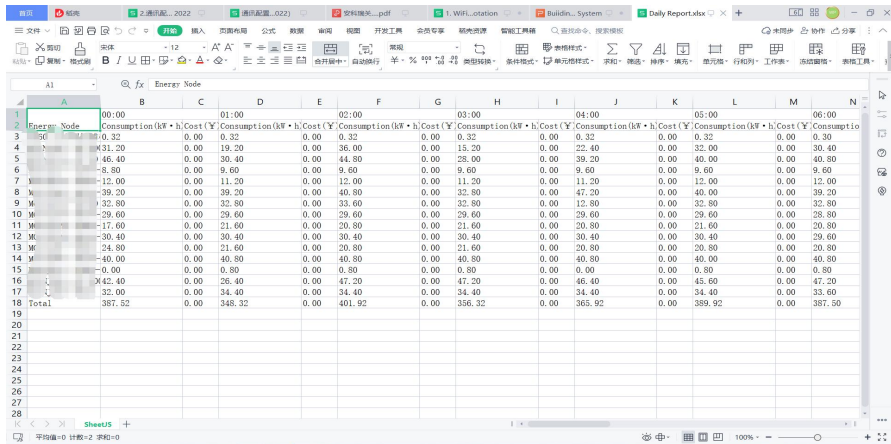
Main Function of WEB side System:

- (1) Devices List (2) History Curve (3) Electricity Parameters Report (4) Energy Consumption Report (Daily, Monthly, Yearly) (5) User Report

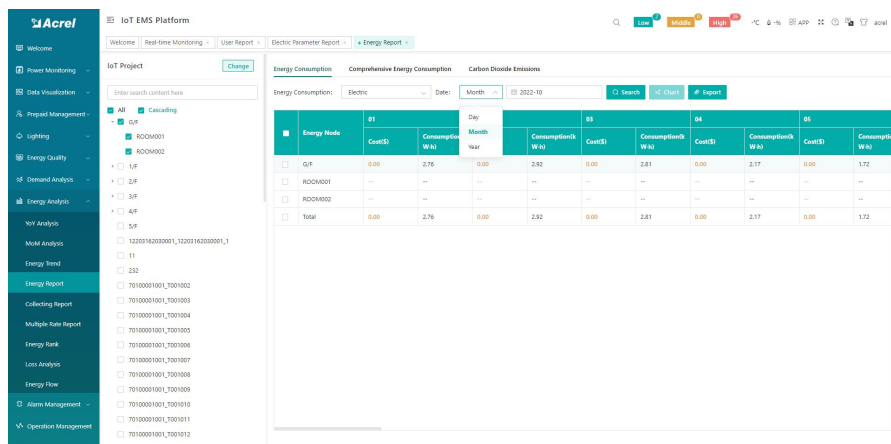
(4) Energy Report (Daily): This Interface show the daily energy consumption report (calculated by forward active energy)



(4) Energy Report (Daily): This daily energy report could be also export to computer in "Excel" format



(4) Energy Report (Monthly& Yearly): Same as daily energy report, monthly and yearly energy report could be also checked on platform and exported in "Excel" format.

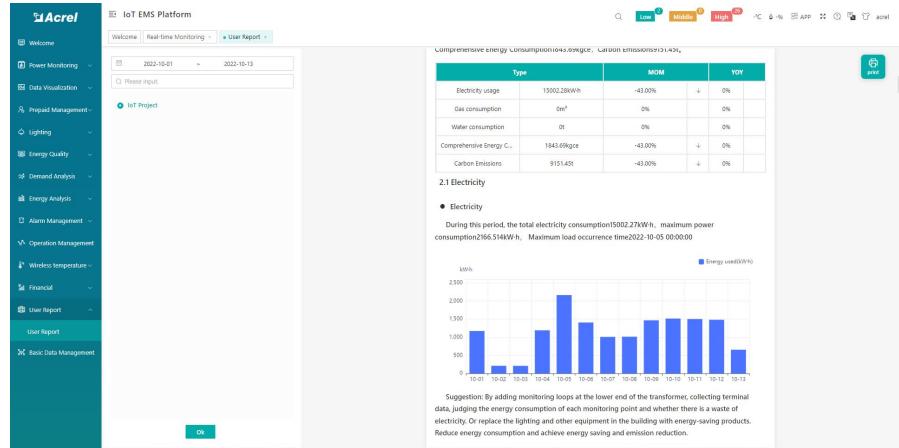


### 3. Acrel IoT Energy Monitoring System (Partail Introduction)

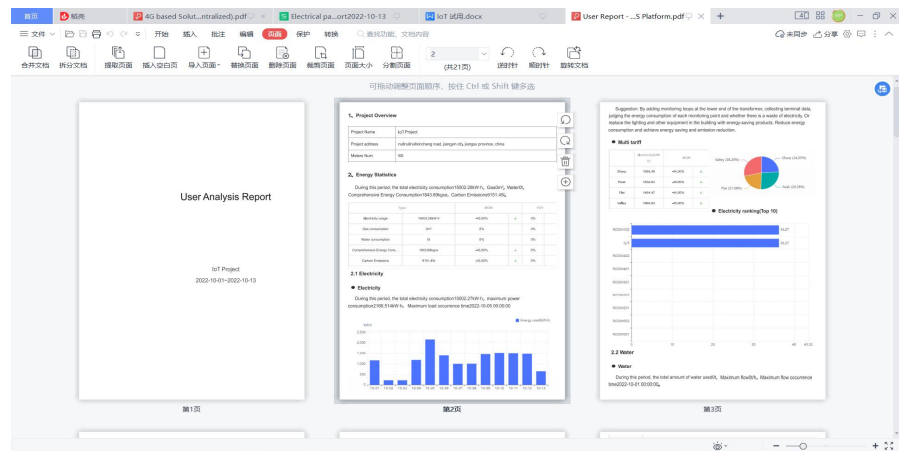
Main Function of WEB side System:

- (1) Devices List (2) History Curve (3) Electricity Parameters Report (4) Energy Consumption Report (Daily, Monthly, Yearly) (5) User Report

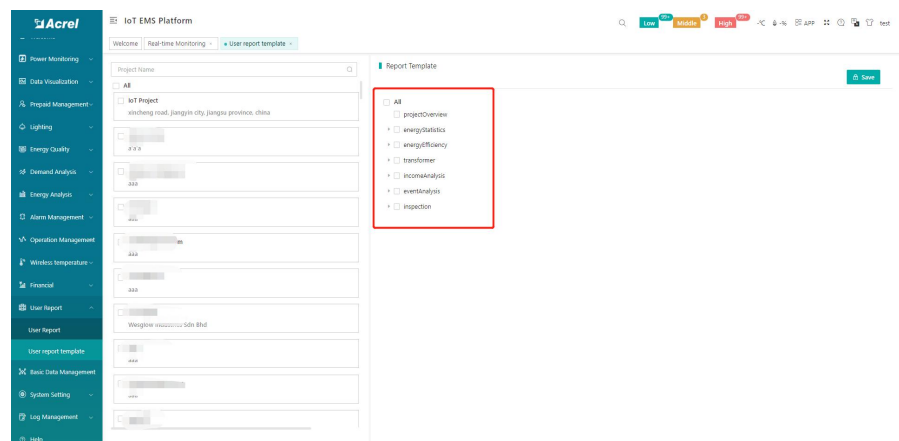
(5) User Report: A comprehensive user report including project overview, energy report, energy analysis and etc could be check on platform



(5) User Report: User report could be exported in "PDF" format into your PC for convenient check and storage.



(5) User Report: User report support template customization in buy-out service of Acrel IoT Energy Monitoring System.

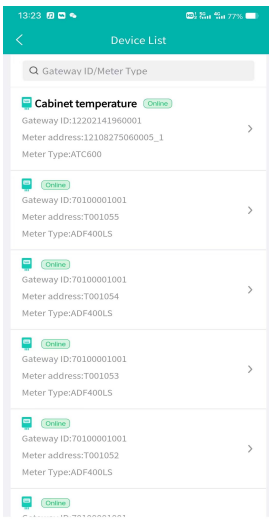


### 3. Acrel IoT Energy Monitoring System (Partail Introduction)

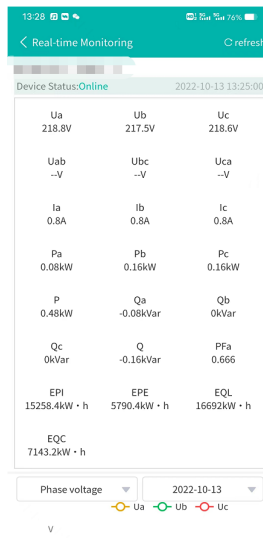
Main Function of APP side System:

- (1) Devices List (2) History Curve (3) Electricity Parameters Report (4) Energy Trend (5) Energy Consumption Report (Daily, Monthly, Yearly)

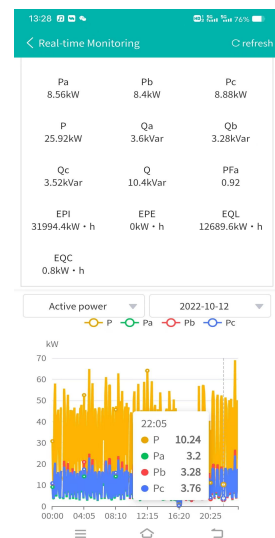
Noted: Since APP side and WEB side of Acrel IoT Energy Monitoring System share the same data, normally recommend our user to add the devices to their account using APP and check the data using WEB platform.



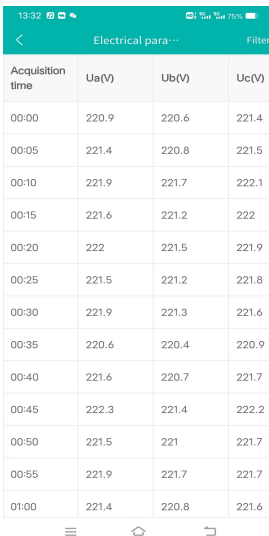
(1) Device List



(2) History Curve

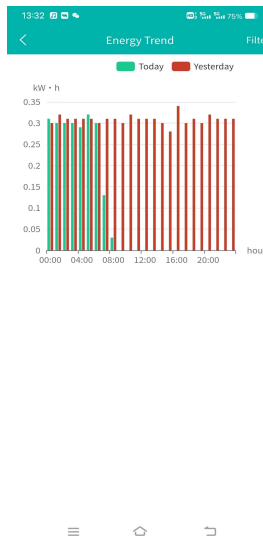


(2) History Curve

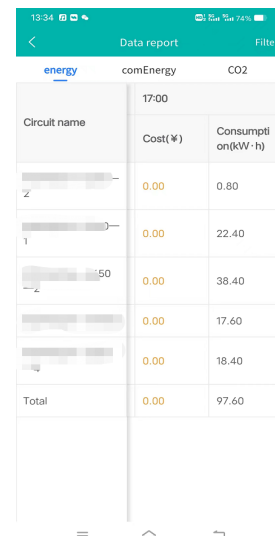


Acquisition time	Ua(V)	Ub(V)	Uc(V)
00:00	220.9	220.6	221.4
00:05	221.4	220.8	221.5
00:10	221.9	221.7	222.1
00:15	221.6	221.2	222
00:20	222	221.5	221.9
00:25	221.5	221.2	221.8
00:30	221.9	221.3	221.6
00:35	220.6	220.4	220.9
00:40	221.6	220.7	221.7
00:45	222.3	221.4	222.2
00:50	221.5	221	221.7
00:55	221.9	221.7	221.7
01:00	221.4	220.8	221.6

(3) Parameter Report



(4) Energy Trend



energy	comEnergy	CO2
Circuit name	Cost(¥)	Consumption(kW·h)
Z	0.00	0.80
T	0.00	22.40
50	0.00	38.40
	0.00	17.60
	0.00	18.40
Total	0.00	97.60

(5) Energy Report