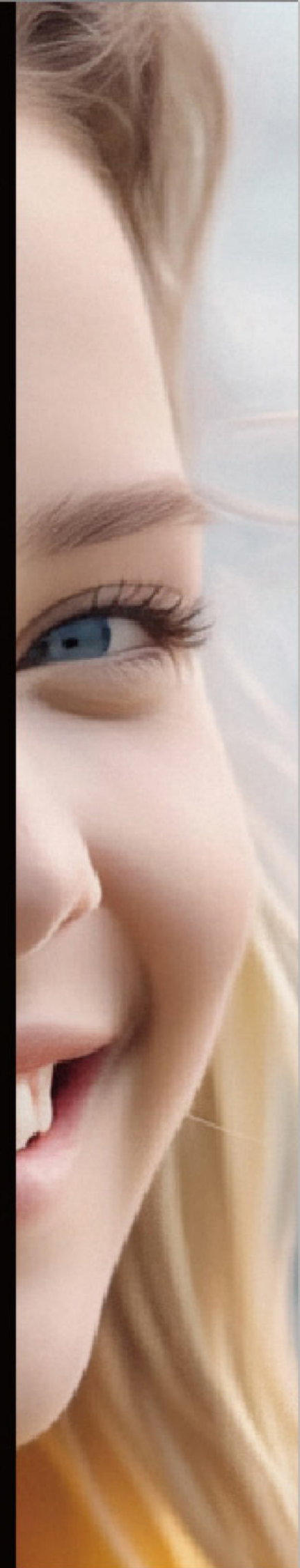
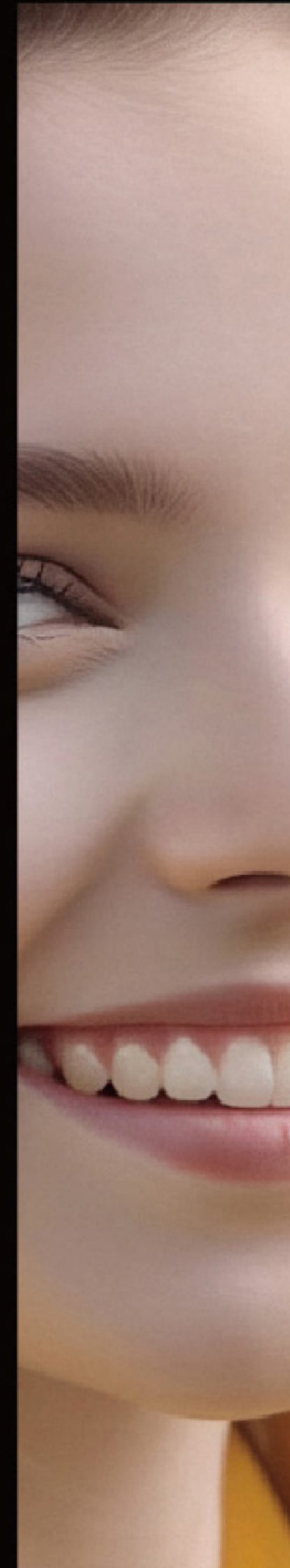
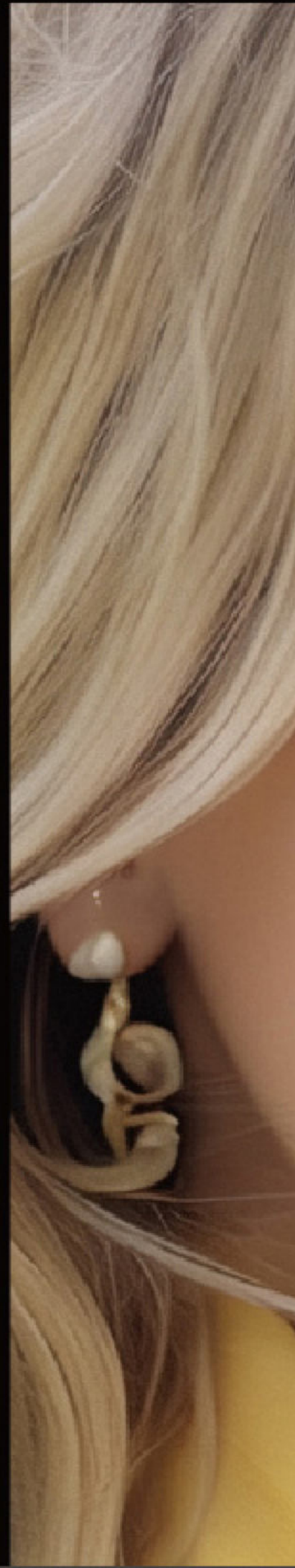


me

**PRODUCT
CATALOG**





A BOUT US

Shenzhen Godzillaking Biotechnology Co.,LTD

COMPANY PROFILE

Shenzhen Godzillaking Biotechnology Co.,LTD nestled in the heart of Shenzhen National High-tech Zone, Godzillaking is dedicated to the research, development, production, and sales of dental zirconia materials and related products. It is driven by the mission to lead innovation in dental materials, providing high-quality solutions for dental care practices world wide.

Godzillaking adheres to independent innovation, continuously develops high-performance dental materials, and leads the industry's development. A rigorous quality management system ensures that product quality meets national and international standards. Integrity based business, customer-centric, providing high-quality service and support. Working hand in hand with partners to promote the progress and development of the dental industry.



4D-X Zirconia Block

Multilayer Color

Recommended Indications



100% TOSOH Zirconia Powder

Colors



Physical Characteristics

Sintered density	6.08±0.03g/cm ³
Bending strength	650-1150MPa(Av.)
Transmittance	49%-53%
Hardness	1200HV
Sintering temperature	Recommend 1500°C

System





4D PRO Zirconia Block

Designed for full-arch bridge



Recommended Indications



Colors



Physical Characteristics

Sintered density	6.08±0.03g/cm ³
Bending strength	650-1150MPa(Av.)
Transmittance	43%-49%
Hardness	1200HV
Sintering temperature	Recommend 1500°C

System





HTC

Monolayer

No need for further dyeing operation

Recommended Indications



Colors



Physical Characteristics

Sintered density	6.07±0.03g/cm ³
Bending strength	900MPa(Av.)
Transmittance	46%
Hardness	1200HV
Sintering temperature	Recommend 1500°C

System





HT

High translucent

Brilliant bending strength and economical Block

Recommended Indications



Onlay



Anterior crown



Posterior crown



Full arch crown bridge



Full crown bridge



Implant

Physical Characteristics

Sintered density	6.07±0.03g/cm ³
Bending strength	1200MPa(Av.)
Transmittance	40%
Hardness	1200HV
Sintering temperature	Recommend 1530°C

System



98mm



95mm



92x75mm



others



Lithium Disilicate

1. Superior chemical stability and bending strength.
2. High aesthetic restoration effect.
3. Easy to cut and prolonging the life of the burs.
4. Simple and fast crystallization process to reduce operating time.

Indications



Veneer



Inlay/onlay



Anterior Crown



Posterior Crown

Type

Color	A1	A2	A3	A3.5	A4	B1	B2	B3	B4	C1	C2	C3	C4	D2	D3	D4	BL1	BL2	BL3	BL4	OM1	OM2	OM3
18-15-13 HT	■	■	■	■	■	■	■	■	■	■	■	■	■	■	■	■	■	■	■	■	■	■	■
18-15-13 LT	■	■	■	■	■	■	■	■	■	■	■	■	■	■	■	■	■	■	■	■	■	■	■
40-15-15 HT	■	■	■	■	■	■	■	■	■	■	■	■	■	■	■	■	■	■	■	■	■	■	■
40-15-15 LT	■	■	■	■	■	■	■	■	■	■	■	■	■	■	■	■	■	■	■	■	■	■	■



Stain&Glaze Set

- ⦿ Special effect colors
- ⦿ Glaze paste, fine particles
- ⦿ Primary sintering, no secondary processing required
- ⦿ Low-temperature fast sintering, efficient and time-saving
- ⦿ Provide personalized and customized services

The fast and simple biological staining&glaze paste developed specifically for CAD/CAM all dental restorations. This product aims to enable dental technicians to use fast and simple methods to complete their work, achieving the restoration of replicated natural teeth.



Ingot (HT/LT)

Bending strength

460^{MPa}

- Suitable for ultra-thin veneer
- More resistant to acid corrosion
- First choice for minimally invasive restoration



Recommended indications





PMMA

Material Properties

Monolayer	10mm~25mm
Mutilayer	10mm~25mm
Flexible	10mm~25mm
Pink	10mm~25mm
Clear	10mm~25mm
Colors	Various colors

WAX

Material Properties

White	10mm~25mm
Blue	10mm~25mm
Green	10mm~25mm
Grey	10mm~25mm
Red	10mm~25mm

PEEK

Material Properties

Natural	10mm~25mm
White	10mm~25mm
Yellow	10mm~25mm
Pink	10mm~25mm



Godzillaking



Roland

For Emax

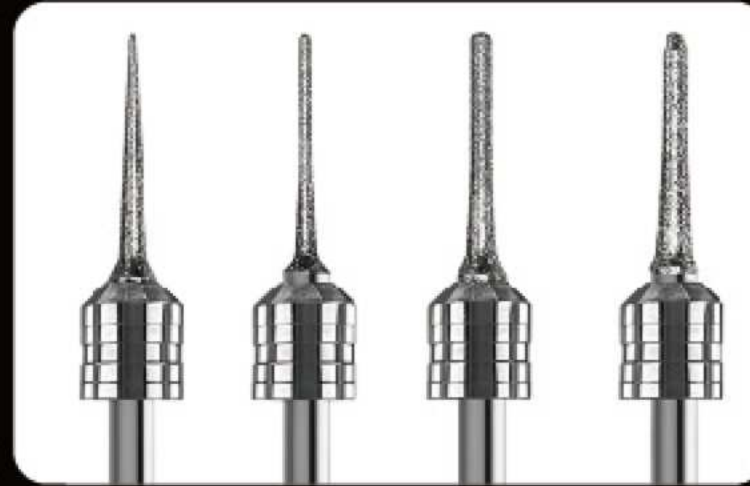
- $\varnothing 0.6 \times \varnothing 3.0 \times 40$
- $\varnothing 1.0 \times \varnothing 3.0 \times 40$
- $\varnothing 2.5 \times \varnothing 3.0 \times 40$



Roland

For Zirconia

- $\varnothing 0.6 \times \varnothing 4.0 \times 50$
- $\varnothing 1.0 \times \varnothing 4.0 \times 50$
- $\varnothing 2.0 \times \varnothing 4.0 \times 50$



Amann Girrbach

For Emax

- $\varnothing 0.5 \times \varnothing 3.0 \times 43$
- $\varnothing 1.0 \times \varnothing 3.0 \times 43$
- $\varnothing 1.4 \times \varnothing 3.0 \times 43$
- $\varnothing 1.8 \times \varnothing 3.0 \times 43$



Amann Girrbach

For Zirconia

- $\varnothing 0.6 \times \varnothing 3.0 \times 47$
- $\varnothing 1.0 \times \varnothing 3.0 \times 47$
- $\varnothing 2.5 \times \varnothing 3.0 \times 47$



Wieland

For Zirconia

- $\varnothing 0.6 \times \varnothing 3.0 \times 40$
- $\varnothing 1.0 \times \varnothing 3.0 \times 40$
- $\varnothing 2.5 \times \varnothing 3.0 \times 40$

Milling Burs

This dedicated dental milling burs have half round micro. Range of milling is from 0.6mm to 2 mm which is used for preliminary and high-efficiency manufacture. 0.6mm milling burs is mainly used to milling the sculpture of groove the elaborate progress. The undercut problem can be fixed easily due to the special length of milling burs and flexible milling.



VHF K5

For Zirconia

- $\varnothing 0.6 \times \varnothing 3.0 \times 43$
- $\varnothing 1.0 \times \varnothing 3.0 \times 43$
- $\varnothing 1.5 \times \varnothing 3.0 \times 43$
- $\varnothing 2.0 \times \varnothing 3.0 \times 43$



VHF

For Emax

- $\varnothing 0.6 \times \varnothing 3.0 \times 35$
- $\varnothing 1.0 \times \varnothing 3.0 \times 35$
- $\varnothing 2.4 \times \varnothing 3.0 \times 35$



VHF K4

For Zirconia

- $\varnothing 0.6 \times \varnothing 3.0 \times 35$
- $\varnothing 1.0 \times \varnothing 3.0 \times 35$
- $\varnothing 2.0 \times \varnothing 3.0 \times 35$



NCD Model-W

For Emax

- $\varnothing 0.6 \times \varnothing 3.0 \times 35$
- $\varnothing 1.0 \times \varnothing 3.0 \times 35$
- $\varnothing 2.4 \times \varnothing 3.0 \times 35$



NCD Model-D

For Zirconia

- $\varnothing 0.6 \times \varnothing 4.0 \times 50$
- $\varnothing 1.0 \times \varnothing 4.0 \times 50$
- $\varnothing 1.5 \times \varnothing 4.0 \times 50$
- $\varnothing 2.0 \times \varnothing 4.0 \times 50$

Milling Burs

System: VHF, RL, ZZS, MIN, AMZ, AW, ZZZ, WIELAND, ZIRKONZAHN, YENA. CERCON, AMAANGIRRBACH, MANUAL.

Milling burs are necessary tools for your milling machine.

Extend the lifetime of your milling tools and increase the number of milled units.



NCD MODEL-D

5 Axis Dental Dry Milling Machine



90° Vertical milling



B-axis rotation angles
up to +35°, -91°



The C-Clamp Adapter allowing
the use of material edges and
a 20% increase in material
utilisation



Resume when interrupted

Product parameters

Size	540*650*770mm	Burs specifications	Special props for handle diameter 4mm
Weight	145KG	Power	1.5kw
Milling materials	Zirconia block, composites materials, Wax/PMMA	Rotating axis operating angle	A: 360° B: +35° -91°
Processing methods	Five-axis linkage, dry milling	Cutting precision	0.01mm
Tool magazine capacity	10	Stable air pressure	≥6.0bar

NCD MODEL-W

5 Axis Dental Wet Milling Machine



Five-axis linkage ensures high-precision cutting and grinding



Large touch screen simple and intelligent operation



Compatible with various materials



Integrated water level monitoring

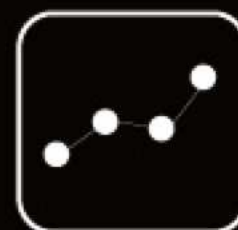
Product parameters

Size	540*650*770mm	Burs specifications	Special props for handle diameter 4mm
Weight	170KG	Power	1200w
Milling materials	Lithium disilicate, Zirconia block, Premill, Composite	Rotating axis operating angle	A: 360° B:+20°
Processing methods	Five-axis linkage, Wet milling	Cutting precision	0.01mm
Tool magazine capacity	10	Stable air pressure	≥6.0bar



NCD MODEL-F

Up-Down Automatic Sintering Furnace



Custom sintering



Double-layer stacking



Energy saving and environmental protection



Uniform sintering



Touch screen control panel



Efficient and fast

Product parameters

Size	365(L)*590(W)*760(H)mm	Furnace size	Ø110mm*130mm
Weight	50KG	Rated power	≤2KW
Temperature control accuracy	±1°C	Number of programs	24 programs
Maximum temperature	1560°C	Touch screen size	7" true color
Operating temperature	1550°C	Sensor type	Platinum rhodium S type double

NCD MODEL-FC

Fast & Normal Sintering Furnace

- New technology for zirconia sintering
- 3 Layers for 150pcs crowns
- No any pollutionss
- One-key touch, auto running



Product parameters

Fumace size	100 x100mm (diameter x height)	Thermocouple	Type B
Maximum temperature	1700 °C (no more than 2 hours)	Temperature control accuracy	+/-1°C
Operating temperature	1600°C	Rated power	2kW (only 8 KWH for one ordinary sintering)
Fast sintering	90 minutes (80 units for single-crown)	Net weight	90kg
Conventional sintering	150 units, 3-layer sinter pan	Overall dimension	480x635x840mm



NCD MODEL-P

Porcelain furnace

Application benefits

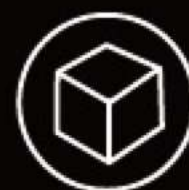
- ◎ Accurate temperature
- ◎ Hyperbolic firing procedure
- ◎ Long service life
- ◎ True-color touch screen
- ◎ Compact and Lightweight

Product parameters

Machine size	20cm*31cm*41cm	Power operation range	≅ 1400W
Power of heater strip	1050W, 220V	Wet weight	10.5kg (without vacuum pump)
Power of vacuum pump	≅ 350W	Maximum temperature	1080°C
Maximum vacuum level	-96kpa		
The velocity of temperature increasing	100°C/min		

NCD MODEL-3DP

Dental 3D printer



XY axis accuracy



Automatic feeding



Screen resolution
10.3" 8K 7680*4320



High speed release film



Printing size
228X 120X 100mm



Molding chamber
heating(20-45°C)

Product parameters

Printing size	228X120X100mm	Touch	5.0 Inch Full color touch screen
Machine size	340X292X552mm	Z axis	Dual linear guide + Ball screw
Packing size	605X380X660mm	LCD screen	2000h
XY axis accuracy	29μm	Language	Support 12 languages, priority on Chinese and English
Printing layer thickness	0.01-0.1mm	Support system	Windows 7/8/10X64, MAC, OS
Printing speed	40-60mm/h		



Anti-fog function

Scanning head built-in automatic heating function to prevent mirror fog

Accurate data

Clear neck edge with high precision

Fast scanning speed

Single jaw scan
Less than a minute

Intelligent technology

AI technology, use more simple and enjoy intelligent experience;
Built-in motion sensing control device, easy to remote control data

Detachable scanning head

multi-specification scanning head for a variety of complex cases

Color realistic

No need for dusting dazzle scanning

Lightweight

246g, small, beautiful and delicate, easy to operate

Probe bracket

Stable placement satisfy moving needs

STEAM JET CLEANER

Environmental friendly, efficient, safe, energy-saving, multifunctional, easy to maintain, and cost-effective.

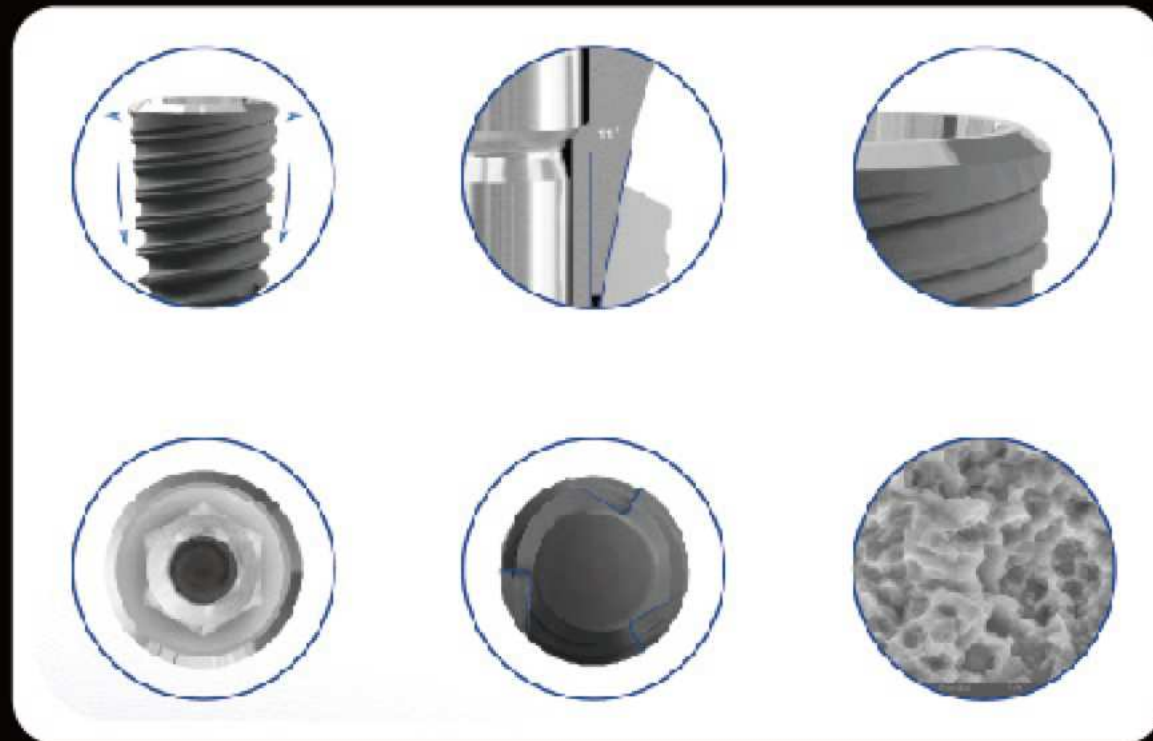
The steam jet cleaner can remove stubborn stains and oil stains in a short period of time, the design is usually simple, easy to operate and maintain.



Outer dimension	240x380x390mm
Steam power	2300W
Steam drang	2~5KG
Boiler volume	3L
Actual water	2.2L
Temperature	120°C
Control type	Handle
Steam nozzle	Active
Water addition method	Automate
Pipe length	1.2M
Interchangeable nozzle	3pcs



Godzillaking



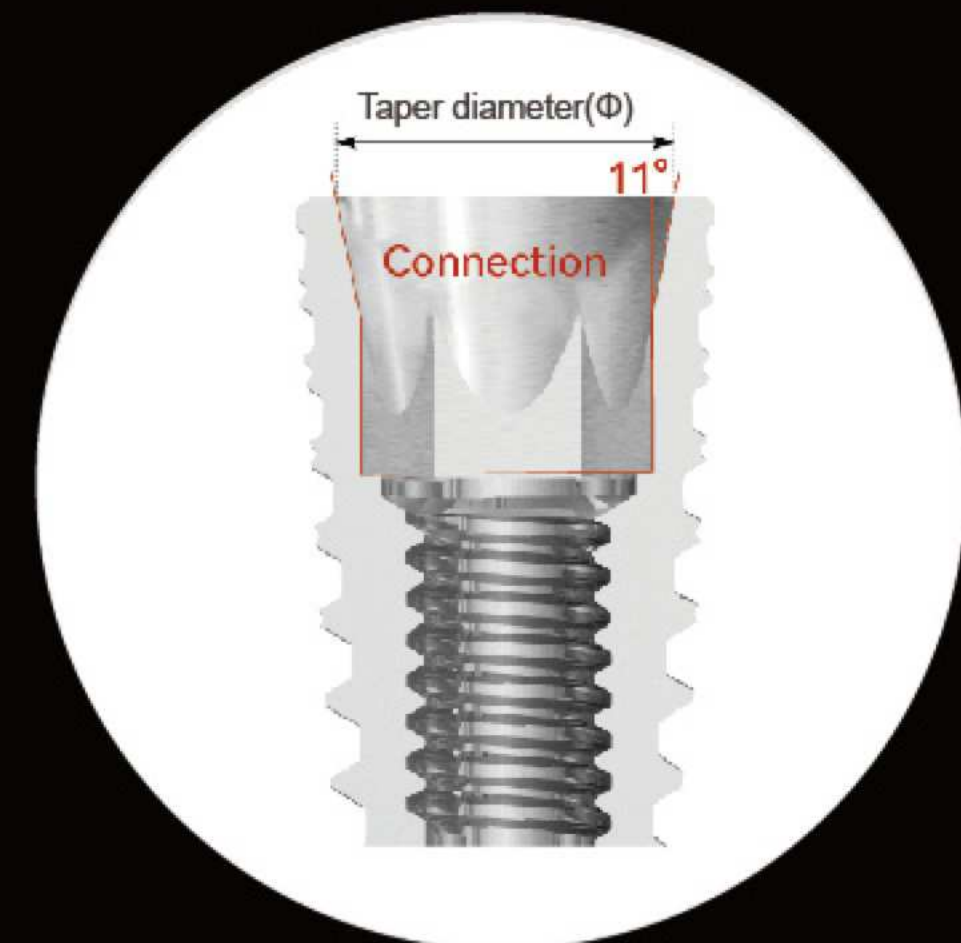
Better DENTAL IMPLANT

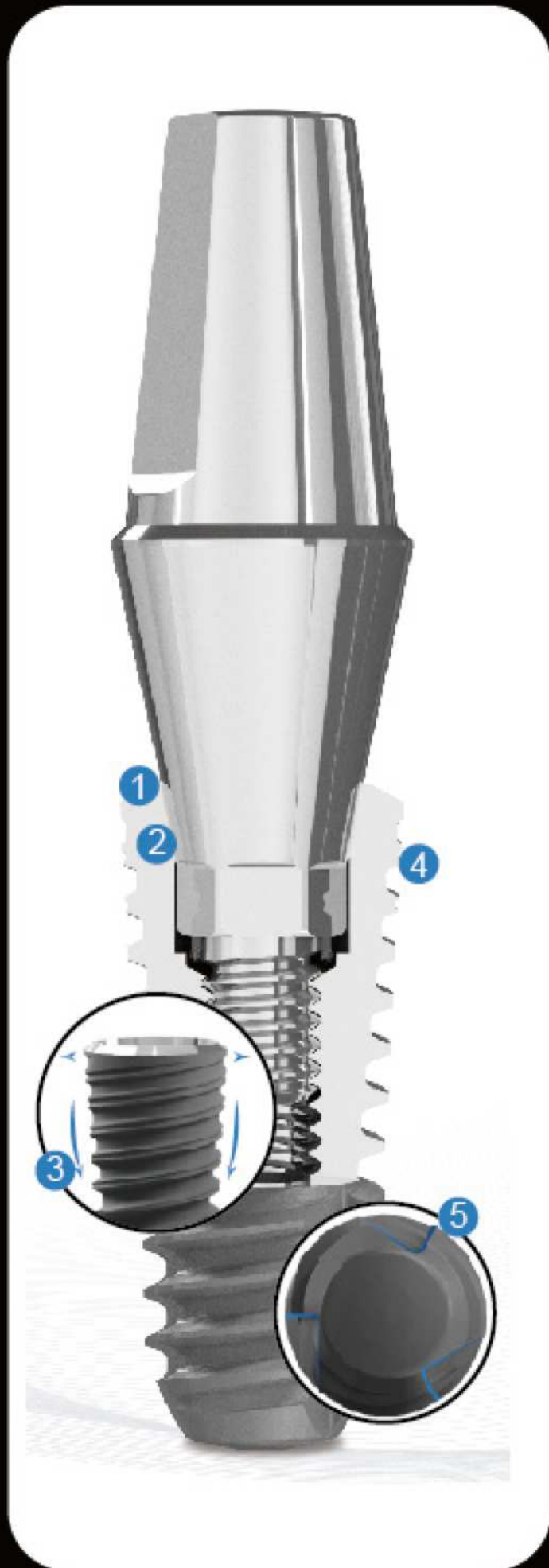
Better Implant System
Intra-attachment design,
reduces bone resorption

Complexity through simplicity. New bone power
Better Implants

SLA surface treatment

- ✓ Improve implant surface bioactivity, accelerate bone healing
- ✓ Morse taper sealing surface roughness $Ra \leq 0.6\mu m$
- ✓ Stronger long-term stability, improving the success rate of implantation





1. Provides space for soft tissue growth

Smooth chamfered teeth neck rims, increasing the width of the platform transfer that facilitates soft tissue attachment and reduces peri-implant inflammation

2. Provides support for long term weight bearing

Internal Morse taper of 11°, internal hexagonal anti-rotation sealing interface. Prevents bacterial infiltration

3. Significant advantages for patients with poor bone quality

Dual combination of micro-cones in the body and expanded cones in the cervical region of the tooth. Improved stability after implantation in patients with poor bone quality

4. Enhance the patient's implant experience

Nested thread design increases the osseointegration area, prevents bone resorption and improves long-term implant stability

5. Strong implantation security

A three-lobed cutting edge that provides strong protection during and after implantation

DIGITAL PRODUCTS



Cuttable Abutment Column

Material properties:

400x metallo graphic microstructure, no impurities, grain uniformity, greatly improving the performance and service life of the product.

Titanium alloy using imported raw materials, and unified supplier with top foreign implant manufacturers. Compared with conventional titanium material, which has higher tensile strength.

Advantages:

1. Cuttable abutment columns are the preferred product type for personalized abutments, it is processed by CAD/CAM system with high precision.
2. The raw material is German Tc4, high strength and good biocompatibility.
3. Compared with other raw materials, the risk of fracture is lower and the success rate of implantation is higher.
4. The material of abutment screws has gone through strict flaw detection and torsion test.





Personalized Abutments

Advantages:

1. Precise prefabricated implant interface
2. Individualized design across the gingival height
3. Repair-oriented design of abutment forms
4. Grinding of cuttable abutment columns into customized shapes and sizes using CAD/CAM technology.
5. High grinding precision





CLIENTS FROM ALL OVER THE WORLD

Our customers have been spread all over the world and Godzillaking has earned a great reputation



Beauty Different

Godzillaking redefines beauty,
one innovation at a time. By challenging the status quo and embracing unconventional ideas,
Beauty Different is a call to action and experience beauty in a whole new way.



Godzillaking

Shenzhen Godzillaking Biotechnology Co.,LTD

WhatsApp: +86 181 3822 7175

Email: info@godzillaking.com

Website: www.godzillaking.com

Adress: Room 301-1, Building A, Shengbaina Industrial Park, No. 6-4,
7 Lane Lingjiao South , Shijing Community, Shijing Street, Pingshan District, Shenzhen