



# Godzillaking



## 4D-X



100% TOSOH  
zirconia blocks



*Beauty different*

# Godzillaking



## 4D-X

Better than your imagination



Made of 100% TOSOH zirconia powder



Superposed by 8 layers and gradient with 15 layers



Life-like shade gradient, no obvious layer line



Incisal area with high translucency, close to natural teeth



Compatible for 3 systems



From raw material to performance, better than your imagination

# 4D-X

zirconia block

Translucency

49% ~ 53%

Bending strength

650 MPa ~ 1150 MPa

Hardness

1200 HV

Sintered density

6.08 + 0.03 g/cm<sup>3</sup>



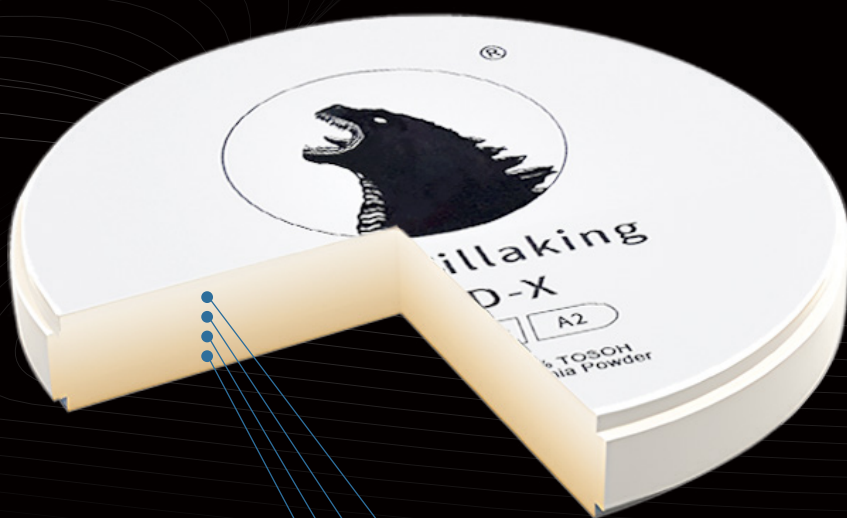
Made of  
**100% TOSOH**  
zirconia powder



**8** superposed layers &  
**15** gradient layers



Life-like shade  
gradient + Incisal area  
with high translucency



Incisal

Translucency

53%

Bending strength

650MPa

Transition layer2

52%

820MPa

Transition layer1

50%

980MPa

Dentin

49%

1150MPa

## Indications



Veneers



Inlays



Anterior and  
posterior crowns



Full arch  
crowns



Full crown  
bridges



Implants

## Colors



A1 A2 A3 A3.5 A4



B1 B2 B3 B4



C1 C2 C3 C4

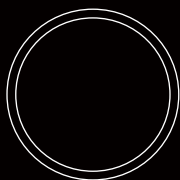


D2 D3 D4

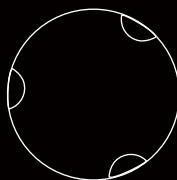


OM1 OM2 OM3

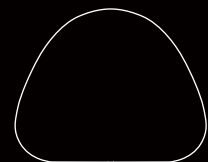
## Compatible for 3 systems



98mm  
(Open System)



95mm  
(Amann Girrbach System)



92\*75mm  
(Zirkon Zahn System)

## The thickness ratio of disc

Layer (Ratio) \ Thickness	10mm	12mm	14mm	16mm	18mm	20mm	22mm	25mm
1st (15%)	1.53	1.83	2.13	2.43	2.73	3.03	3.33	3.78
2st (10%)	1.02	1.22	1.42	1.62	1.82	2.02	2.22	2.52
3st (12%)	1.22	1.46	1.70	1.94	2.18	2.42	2.66	3.03
4st (12%)	1.22	1.46	1.70	1.94	2.18	2.42	2.66	3.03
5st (12%)	1.22	1.46	1.70	1.94	2.18	2.42	2.66	3.03
6st (12%)	1.22	1.46	1.70	1.94	2.18	2.42	2.66	3.03
7st (12%)	1.22	1.46	1.70	1.94	2.18	2.42	2.66	3.03
8st (15%)	1.53	1.83	2.13	2.43	2.78	3.03	3.33	3.78



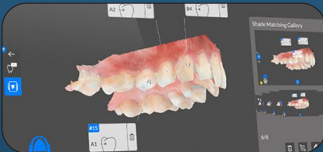


# Processing workflow

## ① Scanning



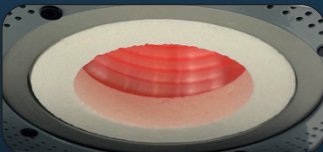
## ② Design



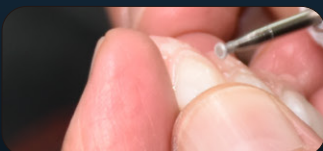
## ③ Milling



## ④ Sintering



## ⑤ Polishing



## ⑥ Glazing

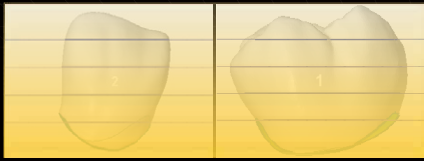


## Milling

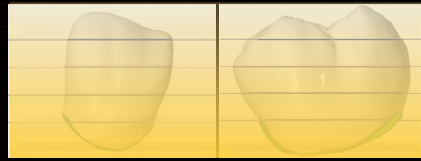
Choose the suitable zirconia types according to the types of restorations, refer to the hierarchical line to set the position of restorations in the CAM software, refer to the hierarchical line on the zirconia block to put it in the milling machine, Import the processing file into the milling machine, take to the restorations from zirconia block and trim the support bar, clear the powder on the restoration.



## Single crown CAM



Initial position before adjustment



Optimum CAM position

## Bridge CAM



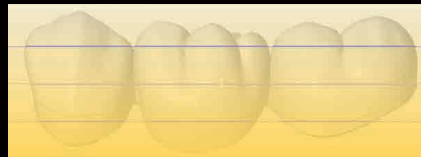
Optimum CAM position



Initial position

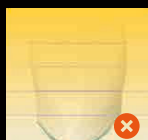
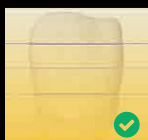


Slightly darker at incisal



Slightly lighter at cervical

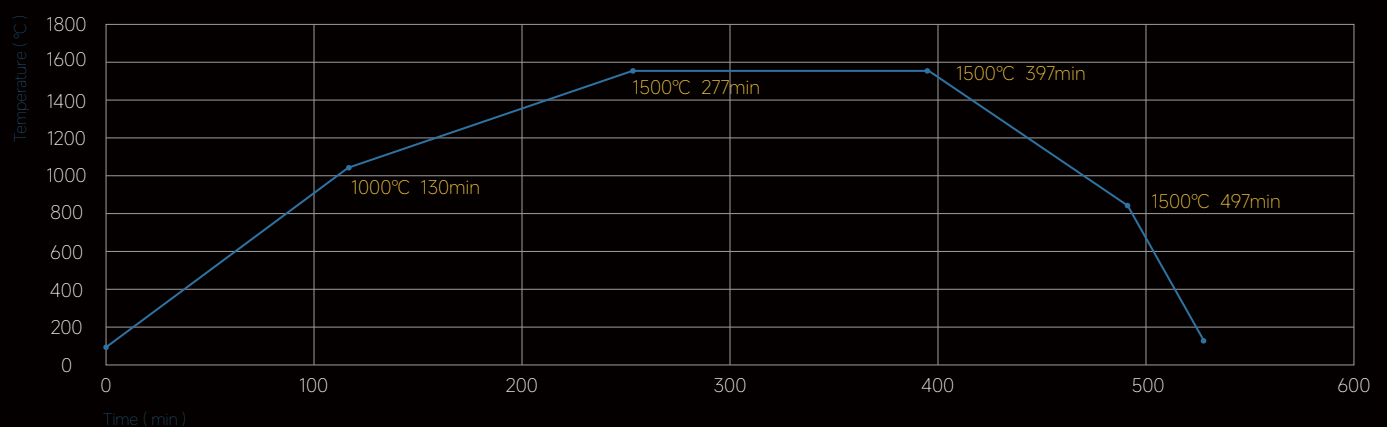
## Milling



1. Clean the dust and residual before loading the block.
2. Check the bur installation is tight before loading
3. Slightly lock each screw and lock them tight one by one when loading the block.
4. Choose a right-size bur suitable for zirconia.
5. Regular calibration is necessary. Please contact manufacturers if there's no auto-calibration.
6. Replace milling burs in time.

## Sintering

Ideal sintering temperature is 1500°C, and holding for 120min.



# Glazing



Made in US  
FDA-cleared



Thick texture  
easy to use



Accurate color  
matching



No air bubble  
better dyeing effect



Shade A



Shade B



Shade C



Shade D



White



Rose



Yellow



Orange brown



Violet



Blue



Ochre



Gray



Orange



Black



Green



Brown

1. Starting temperature and heating rate shall not be too high or too fast.
2. High temperature glaze is not recommended.
3. Cooling rate and final temperature shall not be too high or too fast.





# No Water Polishing for Zirconia



									
Size (mm)	4x10.5	5x12	12x3	4x12	12x2	12x2	4x12	12x2	12x2
Granularity	Fine	Fine	Fine	Fine	Fine	Fine	Super fine	Super fine	Super fine
PCS ( pcs )	1	1	1	1	1	1	1	1	1
型号	CD 2124	CD 2024	CD 2324	RD 2124	RD 2324	RD 2414	RD 2125	RD 2325	RD 2415
ISO:805/802...	104 174 514 040	104 113 514 050	104 042 514 120	104 243 514 040	104 041 514 120	104 304 514 120	104 243 504 040	104 041 504 120	104 304 504 120

## Steps :

- ① Ceramic diamond grinders are used for grinding the Maxillofacial morphology.
- ② Grey polishers are used for leveling and prepolishing.
- ③ Yellow polishers are used for high gloss polishing

## Caution :

Without too much pressure. According to the recommended speed, with better effect.

## Our case





Godzillaking

## CLIENTS FROM ALL OVER THE WORLD

Our customers have been spread all over the world and Godzillaking has earned areat reputation



### **Shenzhen Godzillaking Biotechnology Co.,LTD**

WhatsApp: +86 181 3822 7175

Email: [info@godzillaking.com](mailto:info@godzillaking.com)

Website: [www.godzillaking.com](http://www.godzillaking.com)

Address: Room 301-1, Building A, Shengbaina Industrial Park, No. 6-4, 7 Lane Lingjiao South ,  
Shijing Community, Shijing Street, Pingshan District, Shenzhen