

BINLI

Guangdong Binli Bathroom Co.,Ltd

Add: West Lilongpian, Fenggang Village, Fengtang Town, Chacan , Chaozhou

Tel: +86-768-67966288

Fax: +86-768-67966288

Email: sales@binli-bathroom.com

www.binli-bathroom.com



BINLI
Believe·Liberty

Factory
500000
SQF

280
STAFF

12
R&D People

120M
TUNNEL KILN

DAILY
CAPACITY
1200
SETS

Patented
Hygienius Glaze
Techonology

CUPC
WaterSense
Map1000g

68
PATENTS

ISO14001
ISO9001
ISO45001

BINLI
Believe·Liberty

ABOUT **BINLI**

Guangdong Binli Bathroom Co.,Ltd. is a large-scale company specializing in development, production, sales and service. The company's products cover ceramic sanitary ware, bathroom cabinets, hardware faucet showers and leisure bathroom wares.

Since its establishment, the company has adhered to the management philosophy of "people-oriented, pioneering and innovative", taking talents as the entry point for all work, taking "innovation" as the source of enterprise vitality, attaching importance to the construction of hardware equipment of enterprises, and paying attention to the application of scientific management methods. Committed to creating high quality bathroom products. At present, the company has a ceramic research and development center and a number of patents for kitchen and bathroom.

BINLI has always adhered to the business tenet of "integrity co-operation, mutual benefit and win-win", and strives to build the enterprise into an operating entity with satisfactory employees and customers.

INNOVATE
RIGOROUS
ORDERED
SUSTAINABLE



FACTORY
ENVIRONMENT



Aesthetics

The concealed cistern can be hidden within the wall, reducing visual interference and making the bathroom look more neat and modern.

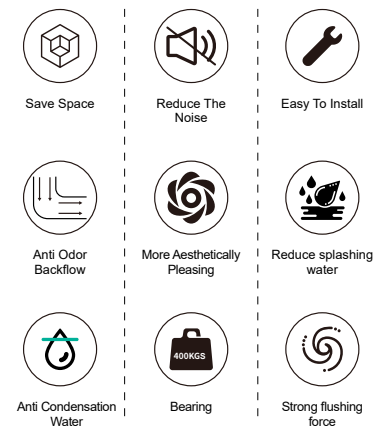
ENTERING THE WALL TO SAVE SPACE



400KGS



FUNCTIONAL FEATURES



Model: BL-01

Matched for all wall hung toilet models

Dimension: 1080x510x80mm

42-1/2"x20"x3-1/8"

Frame undertake: 400KGS

Panel size: 237x152mm

Panel Design: Dual flush & Front button

Material: HDPE+Steel Frame

Volume: 4.5 / 7.5L, 3/6L

Toilet Hole Distance: 180-230mm

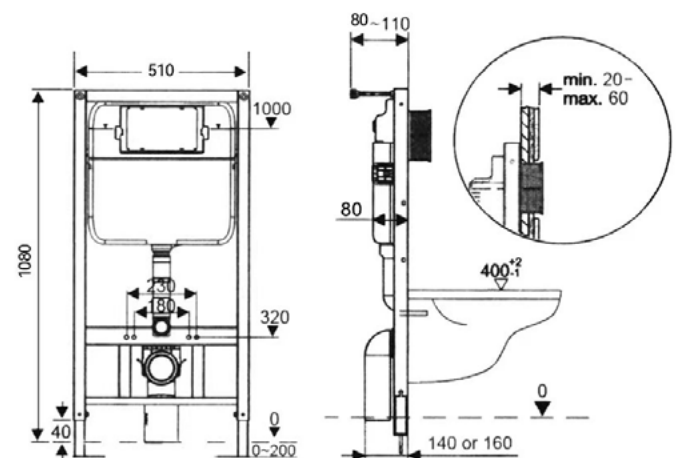
Installation: Wall Hidden

Suitable for dry wall or prewall

Water tank surface: Styrofoam wrapped to prevent low temperature condensation on the wall



DRAWING





Model: BL-02

Matched for all wall hung toilet models
Dimension: 1090x510x80mm
43"x20"x3-1/8"
Frame undertake: 400KGS
Panel size: 237x152mm
Panel Design: Dual flush & Front button
Material: HDPE+Steel Frame
Volume: 4.5 / 7.5L,3/6L
Toilet Hole Distance: 180-230mm
Installation: Wall Hidden
Suitable for dry wall or prewall
Water tank surface: Styrofoam wrapped to prevent low temperature condensation on the wall

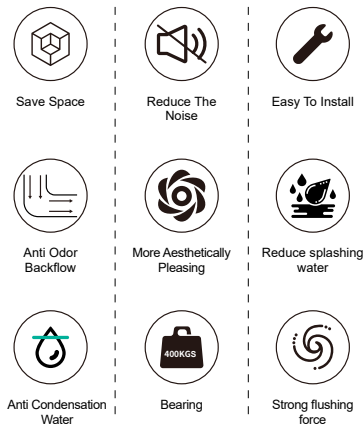


Model: BL-03

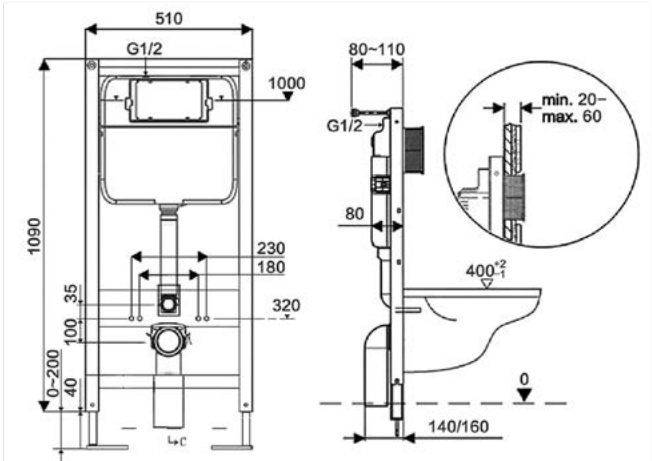
Matched for all wall hung toilet models
Dimension: 1090x580x80mm
43"x22-7/8"x3-1/8"
Frame undertake: 400KGS
Panel size: 237x152mm
Panel Design: Dual flush & Front button
Material: HDPE+Steel Frame
Volume: 4.5 / 7.5L,3/6L
Toilet Hole Distance: 180-230mm
Installation: Wall Hidden
Suitable for dry wall or prewall
Water tank surface: Styrofoam wrapped to prevent low temperature condensation on the wall



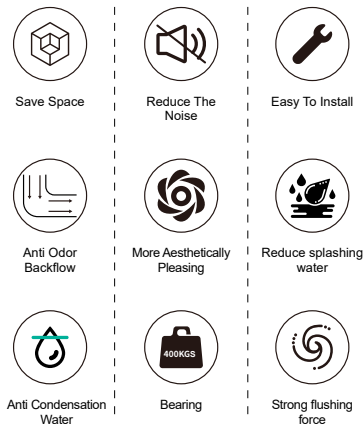
FUNCTIONAL FEATURES



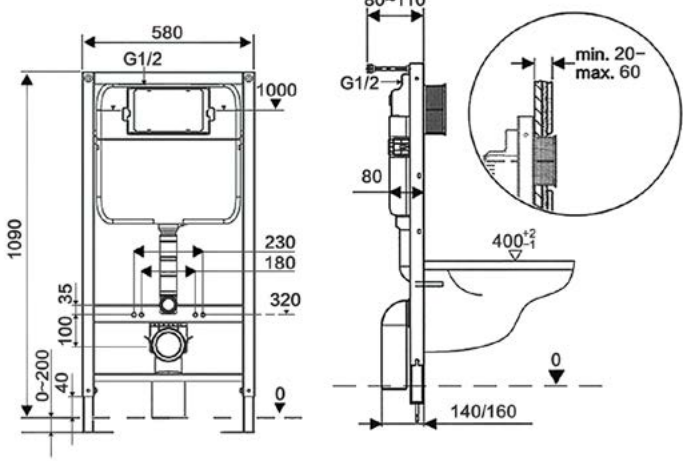
DRAWING



FUNCTIONAL FEATURES



DRAWING



Space Utilization

Since the cistern is not exposed, it allows for more efficient use of bathroom space, especially in small bathrooms.





Model: BL-04

Matched for all wall hung toilet models
Dimension: 1090x580x80mm
43"x22-7/8"x3-1/8"
Frame undertake: 400KGS
Panel size: 237x152mm
Panel Design: Dual flush & Front button
Material: HDPE+Steel Frame
Volume: 4.5 / 7.5L,3/6L
Toilet Hole Distance: 180-230mm
Installation: Wall Hidden
Suitable for dry wall or prewall
Water tank surface: Styrofoam wrapped to prevent low temperature condensation on the wall

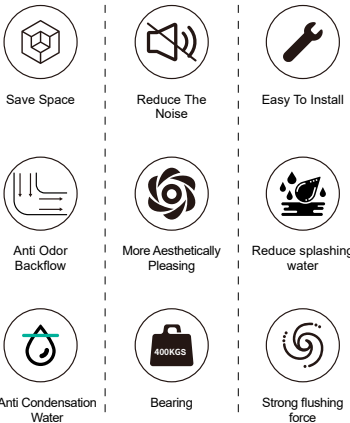


Model: BL-05

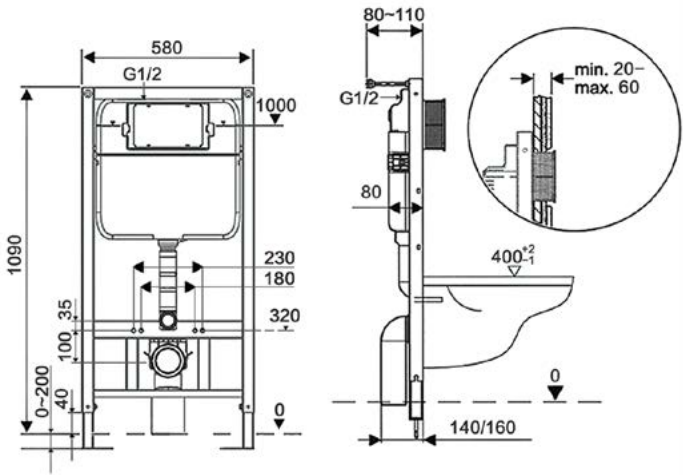
Matched for all wall hung toilet models
Dimension: 1140x580x80mm
44-4/5"x22-7/8"x3-1/8"
Frame undertake: 400KGS
Panel size: 237x152mm
Panel Design: Dual flush & Front button
Material: HDPE+Steel Frame
Volume: 4.5 / 7.5L,3/6L
Toilet Hole Distance: 180-230mm
Installation: Wall Hidden
Suitable for dry wall or prewall
Water tank surface: Styrofoam wrapped to prevent low temperature condensation on the wall



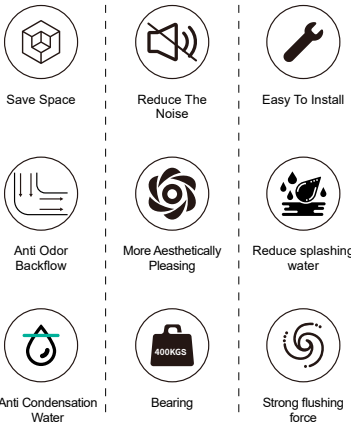
FUNCTIONAL FEATURES



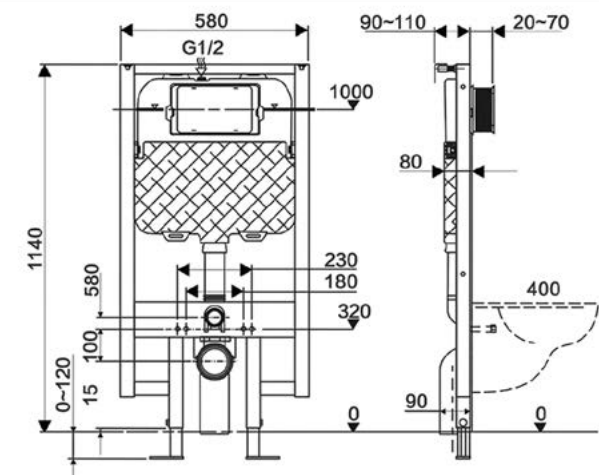
DRAWING



FUNCTIONAL FEATURES



DRAWING



Concealed

Unleash every inch of space for a more spacious and comfortable bathroom experience, enhancing aesthetics and ease of cleaning.





Model: BL-06

Matched for all wall hung toilet models
Dimension: 820x500x145mm
32-1/4"x19-5/8"x5-3/4"
Frame undertake: 400KGS
Panel size: 237x152mm
Panel Design: Dual flush & Front button
Material: HDPE+Steel Frame
Volume: 4.5 / 7.5L,3/6L
Toilet Hole Distance: 180-230mm
Installation: Wall Hidden
Suitable for dry wall or prewall
Water tank surface: Styrofoam wrapped to prevent low temperature condensation on the wall

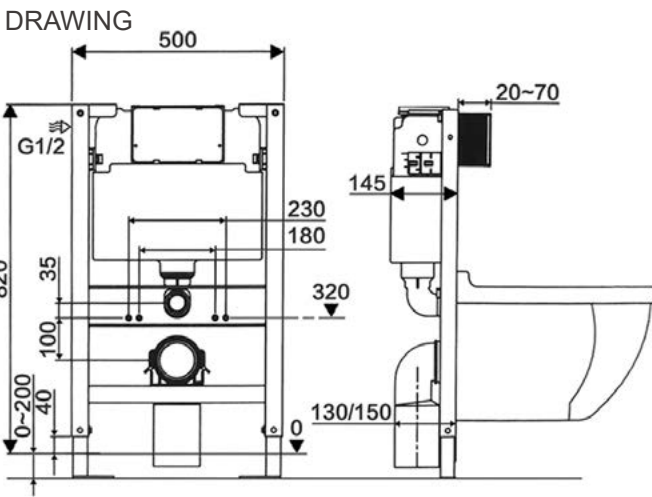
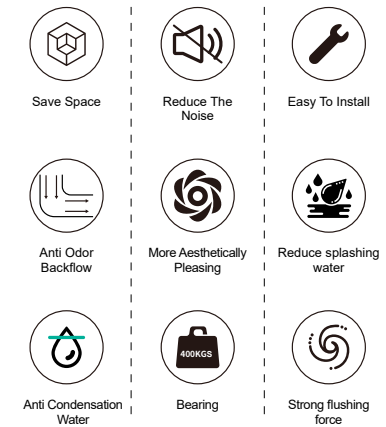


Model: BL-10

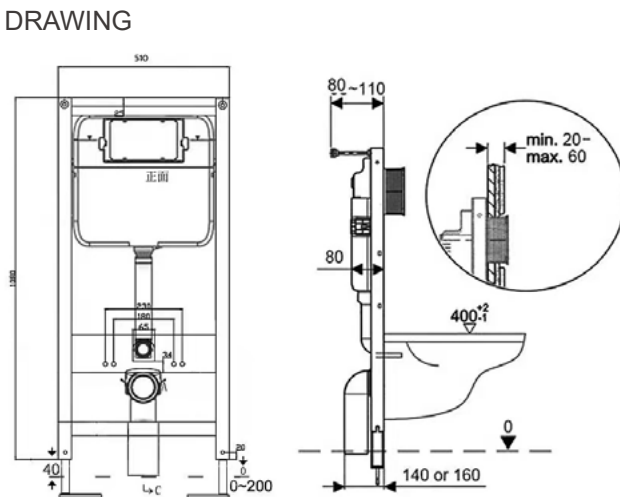
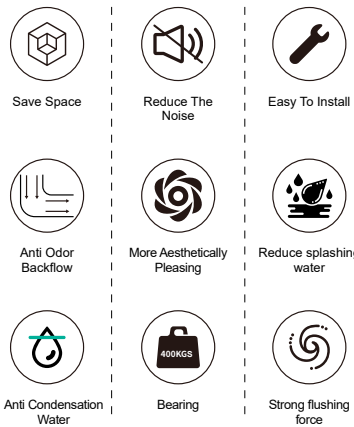
Matched for all wall hung toilet models
Dimension: 1080x510x80mm
42-1/2"x20"x3-1/8"
Frame undertake: 400KGS
Panel size: 237x152mm
Panel Design: Dual flush & Front button
Material: HDPE+Steel Frame
Volume: 4.5 / 7.5L,3/6L
Toilet Hole Distance: 180-230mm
Installation: Wall Hidden
Suitable for dry wall or prewall
Water tank surface: Styrofoam wrapped to prevent low temperature condensation on the wall



FUNCTIONAL FEATURES



FUNCTIONAL FEATURES





Easy to Clean

The concealed design reduces cleaning dead zones, making daily cleaning and maintenance more convenient.





GOOD MATERIALS ARE
MORE DURABLE



INTEGRATED MOLDING



Model: BLS-01

Matched for all squat pan and floor-standing toilets

Dimension: 1060x480x78mm

41-3/4"x18-7/8"x3"

Panel size: 237x152mm

Panel Design: Dual flush & Front button

Material: HDPE

Volume: 4.5 / 7.5L,3/6L

Installation: Wall Hidden

Suitable for dry wall or prewall

Water tank surface: Styrofoam wrapped to prevent low temperature condensation on the wall



WHITE

**MAINTENANCE WITHOUT
DISMANTLING WALLS**

FUNCTIONAL FEATURES



Save Space



Reduce The Noise



Easy To Install



Anti Odor Backflow



More Aesthetically Pleasing



Reduce splashing water



Anti Condensation Water

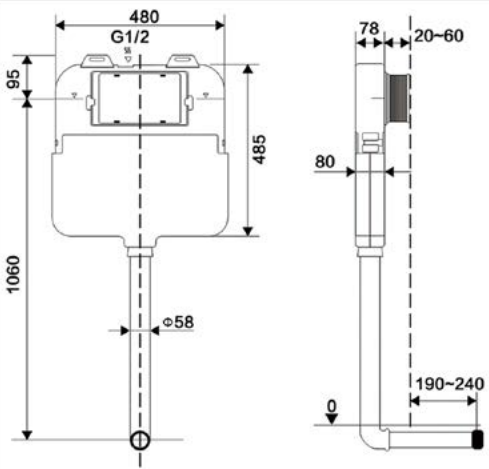


Durable



Strong flushing force

DRAWING






Model: BLS-02

Matched for all squat pan and floor-standing toilets
Dimension: 1120x 410x80mm
44" x 16"x 3-1/8"
Panel size: 237x152mm
Panel Design: Dual flush & Front button
Material: HDPE
Volume: 4.5 / 7.5L,3/6L
Installation: Wall Hidden
Suitable for dry wall or prewall
Water tank surface: Styrofoam wrapped to prevent low temperature condensation on the wall




WHITE


FUNCTIONAL FEATURES




Save Space




Reduce The Noise




Easy To Install




Anti Odor Backflow




More Aesthetically Pleasing




Reduce splashing water



Anti Condensation Water

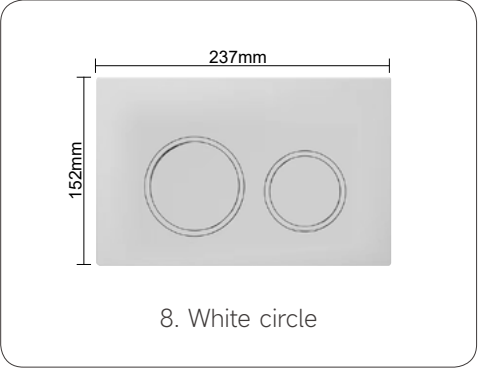
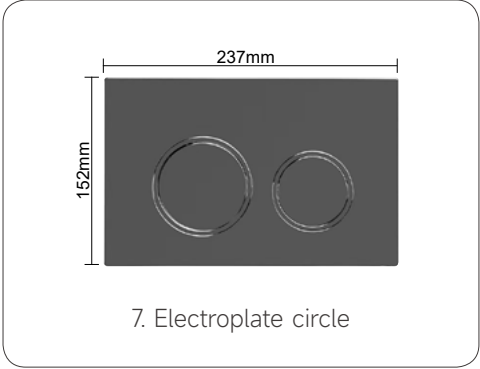
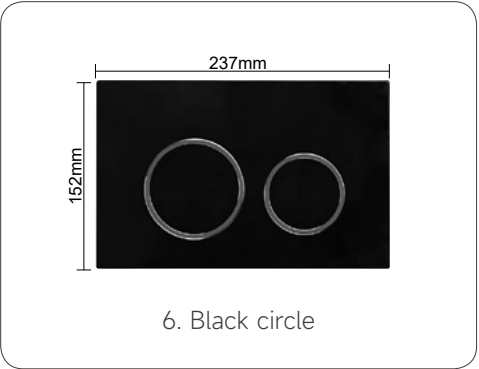
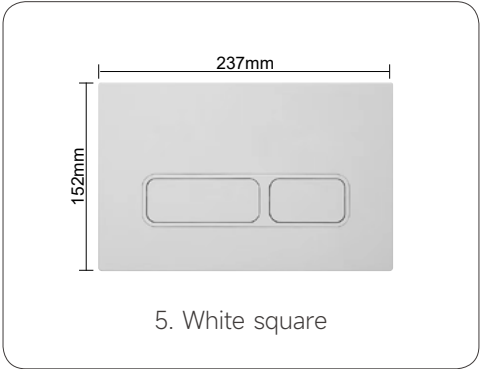
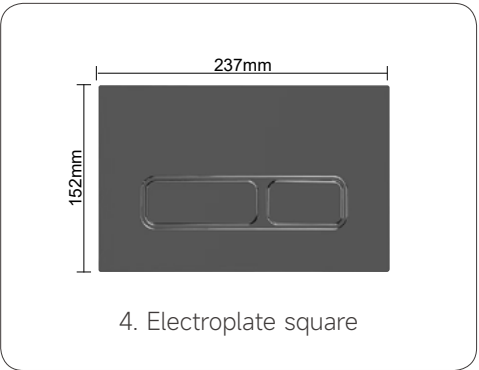
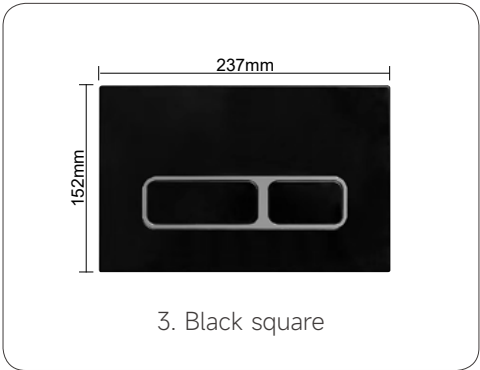
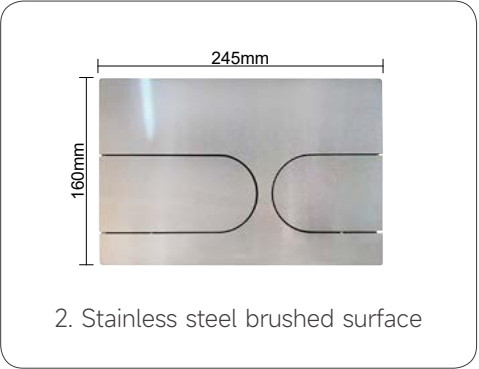
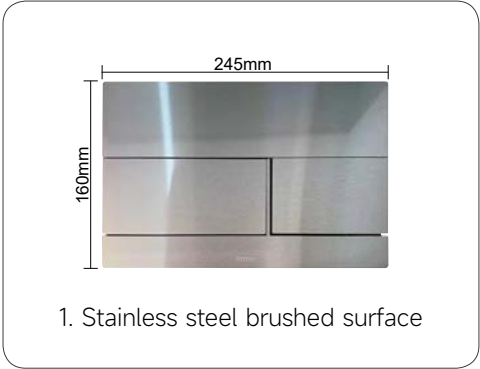
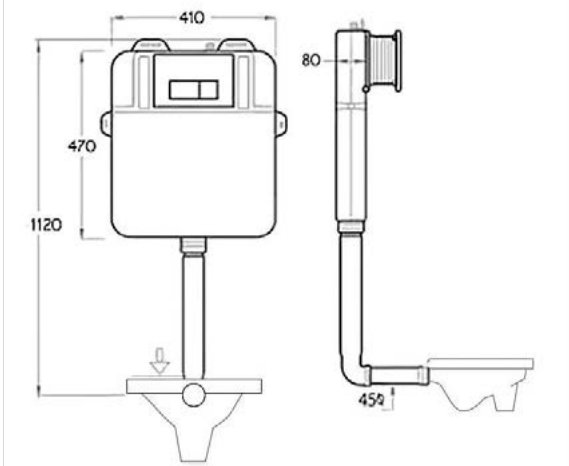


Durable



Strong flushing force

DRAWING



OPTIONAL PANELS