

ILLUMINATION  
Exterior LED Lighting

New Catalogue  
2024

ULED®

catalogue  
2024 | 2025

Puyuan Electronic Illumination Co., Ltd.



Our customers around the world !





factory with 10000 m2 areas

Our Team...

## ▶ ABOUT US

Puyuan Electronic Illumination Co., Ltd (ULED). was established in 2007 and is located in Heshan City of Guangdong in China. Our company covers an area of 10000 square meters and has around 100 employees. Our goal is to make high quality products and to do this we only use all modern machines, such as 15 sets of CNC, 2 sets of SMT, and 1 set of soldering machine. We also have our own EMI machine for CE-EMC, RoHS machine, IP X8 machine, anti-UV testing machine and other professional machines as to ensure good quality for our waterproof outdoor lighting products.

Our company has rich experience in outdoor lighting industry for over 16 years since 2007. Our main products include LED underground lights, underwater lights, garden spot lights, step lights, wall lights etc. Besides, we are making great efforts to develop new products to meet different requirements. Our factory has obtained the ISO 9001:2015 and ISO 14001:2015 certifications as to strictly control the product quality. We also have obtained CE, RoHS certificates for our products, TUV, ETL, UL are optional upon customer's requirements. Adhering to the business principle of mutual benefits, we have had a reliable reputation among our customers because of our professional services, quality products and competitive prices. Our products are exported to Europe, North America, South America, Australia, New Zealand, Malaysia, Indonesia, Vietnam, UAE, Saudi Arabia etc. We warmly welcome customers from at home and abroad to cooperate with us for common success.



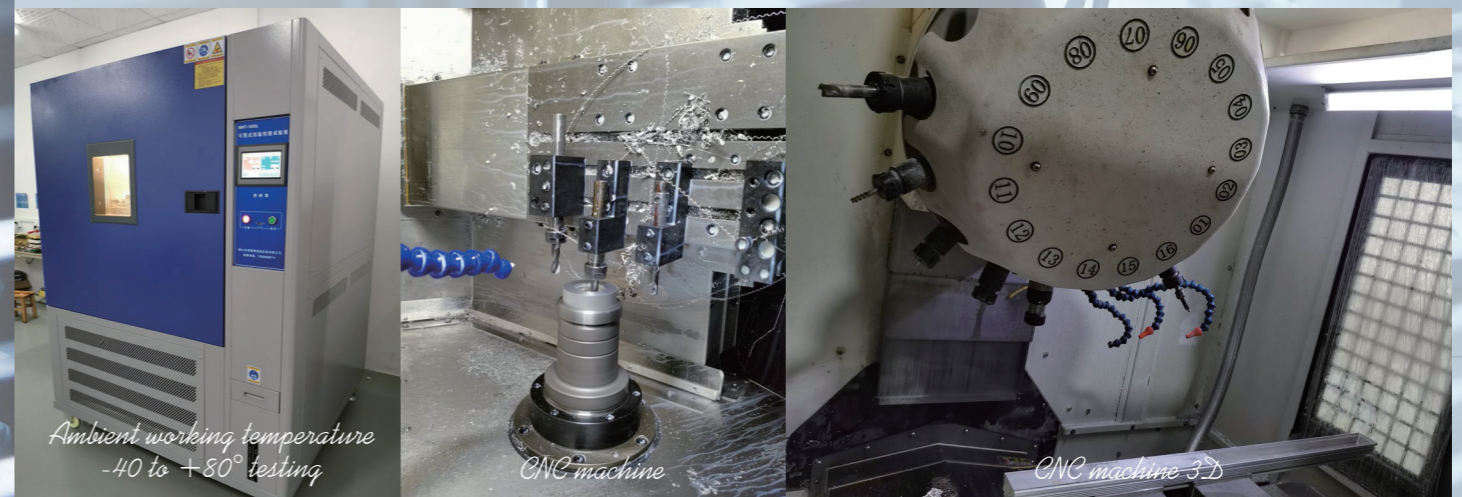
CNC machine



CNC machine housing



Aging test

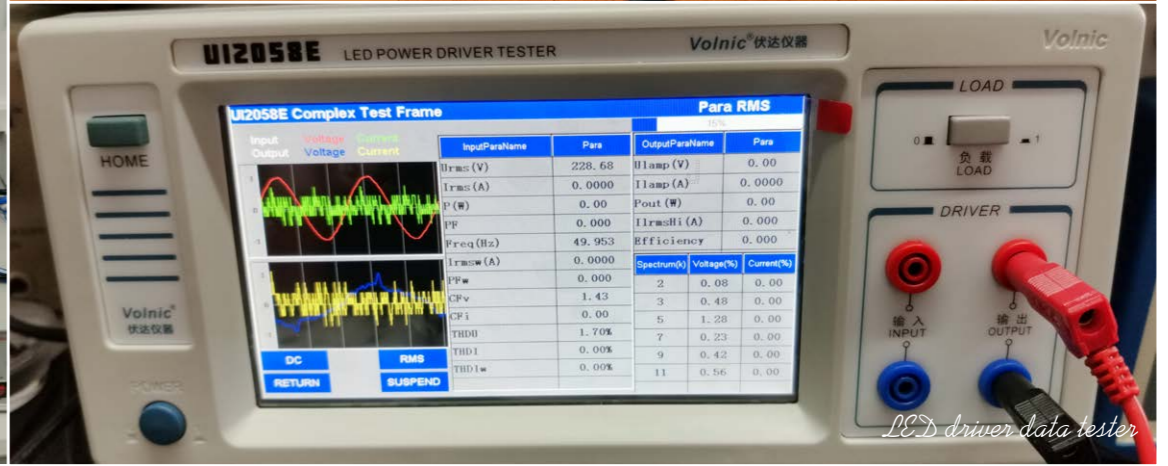
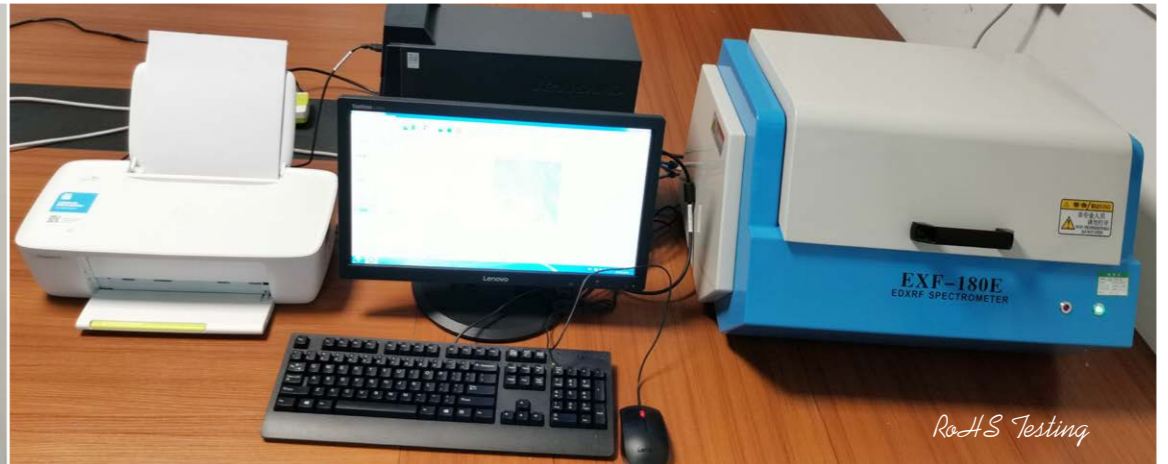


Ambient working temperature -40 to +80° testing

CNC machine

CNC machine 3D









Our Products...



# CONTENTS

INGROUND LIGHTS  
SERIES

42-257

DECK LIGHTS/  
WATERPROOF  
DOWNLIGHT  
SERIES

258-281

UNDERWATER LIGHTS  
SERIES

282-313

GARDEN LIGHTS  
SERIES

314-391

WALL LIGHTS  
SERIES

392-455

LED PROJECTOR  
LIGHTING  
SERIES

456-477

LED WALL WASHER

478-491

XLINEAR LIGHTS  
SERIES

492-509

LED HANDRAIL LIGHTS  
SERIES

510-519

ACCESSORIES

520-524





Specialized in Exterior LED Lighting

# INGROUND LIGHTS SERIES

## Products Features

These products are designed with stainless steel 316 trim, Solid 6063 Aluminum housing CNC machined, with passivated (anodizing) anti-corrosion finishing for housing, optics PMMA lens with wonderful light output, tempered glass for high loading capacity, silicone gasket and cable gland for waterproof IP67 and high quality CREE LED, OSRAM LED, EPISTAR LED.

We make wide range of inground lights to meet different application with different size, power, color, beam angle, and even the inground lights beam direction or beam angle adjustable series are available.

These products are with CE, RoHS certifications, and the SAA, PSE, UL or ETL certifications will be available in the coming future.

## Application

These lights are widely used in the exterior or interior application, such as lighting columns, walls, architectural features, landscape features for the hotel, the garden, the park, the square, the stair step, the landscape road etc.

**SSS 316**

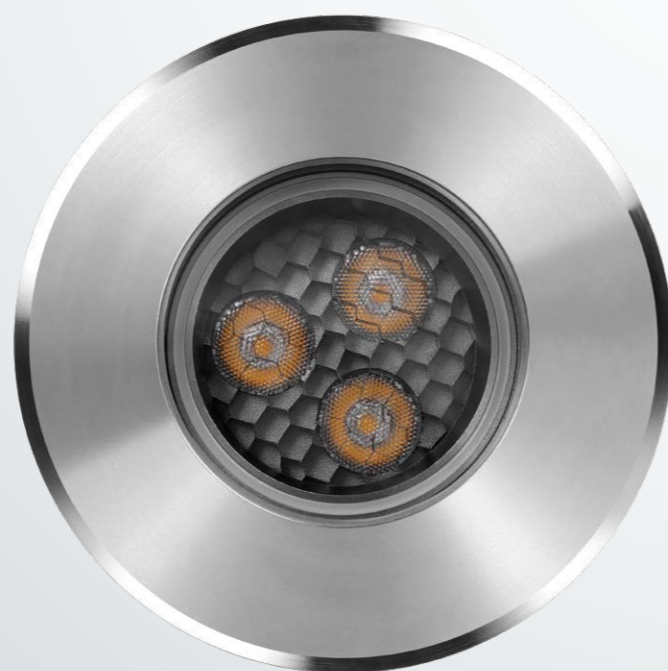
**Adjustable**

**Passivated**

**3 Years Warranty**



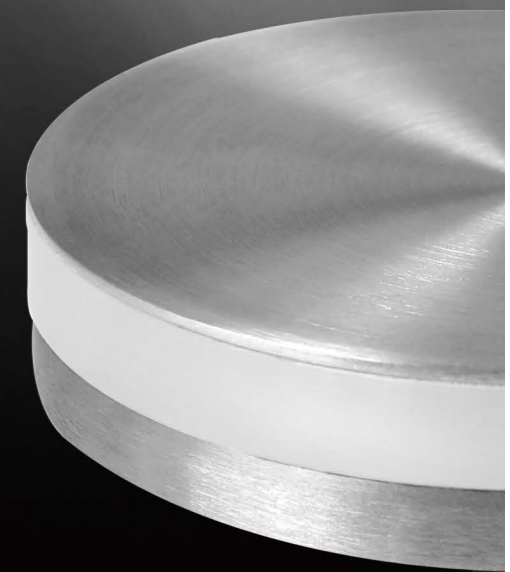
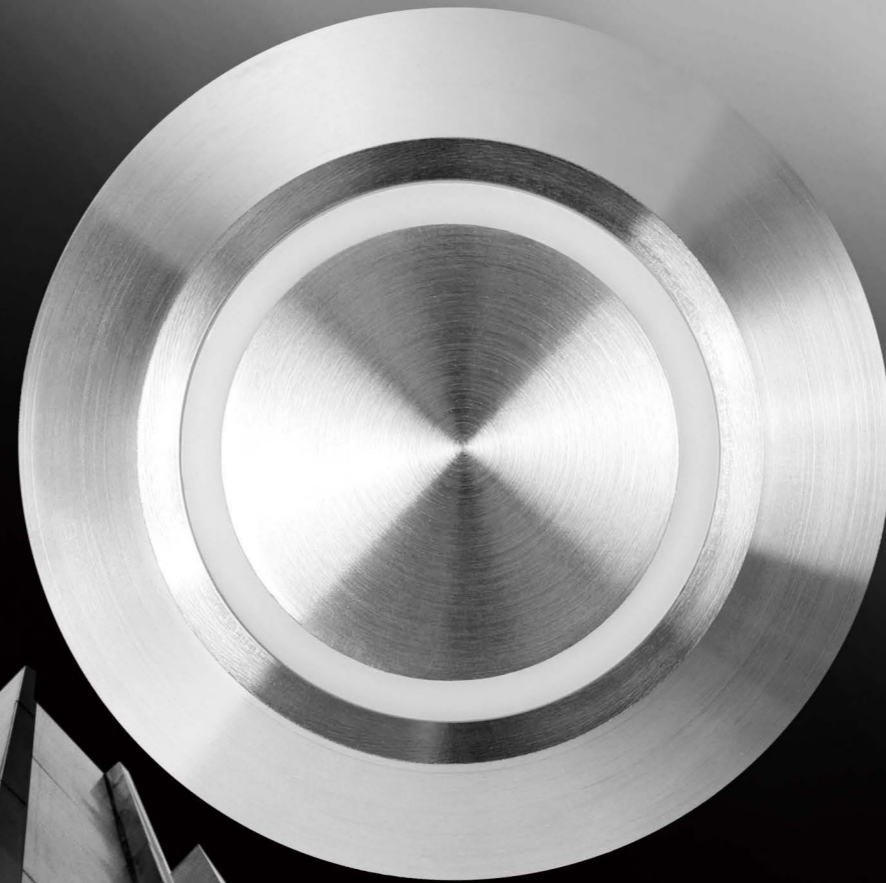
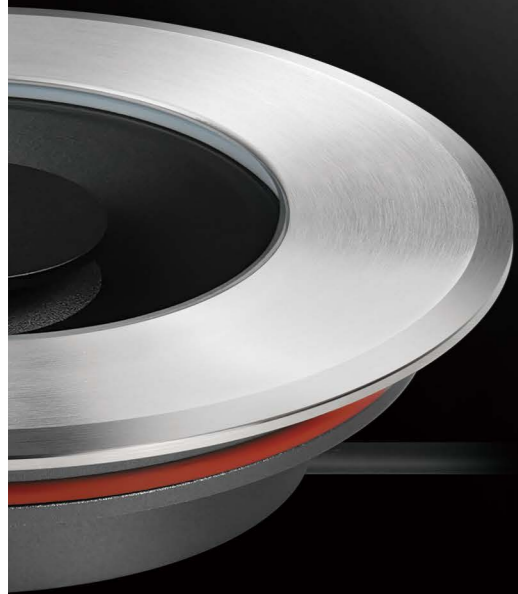
**IP67 IK06 IK07 IK08  
IK09 IK10**





# INGROUND LIGHTS SERIES

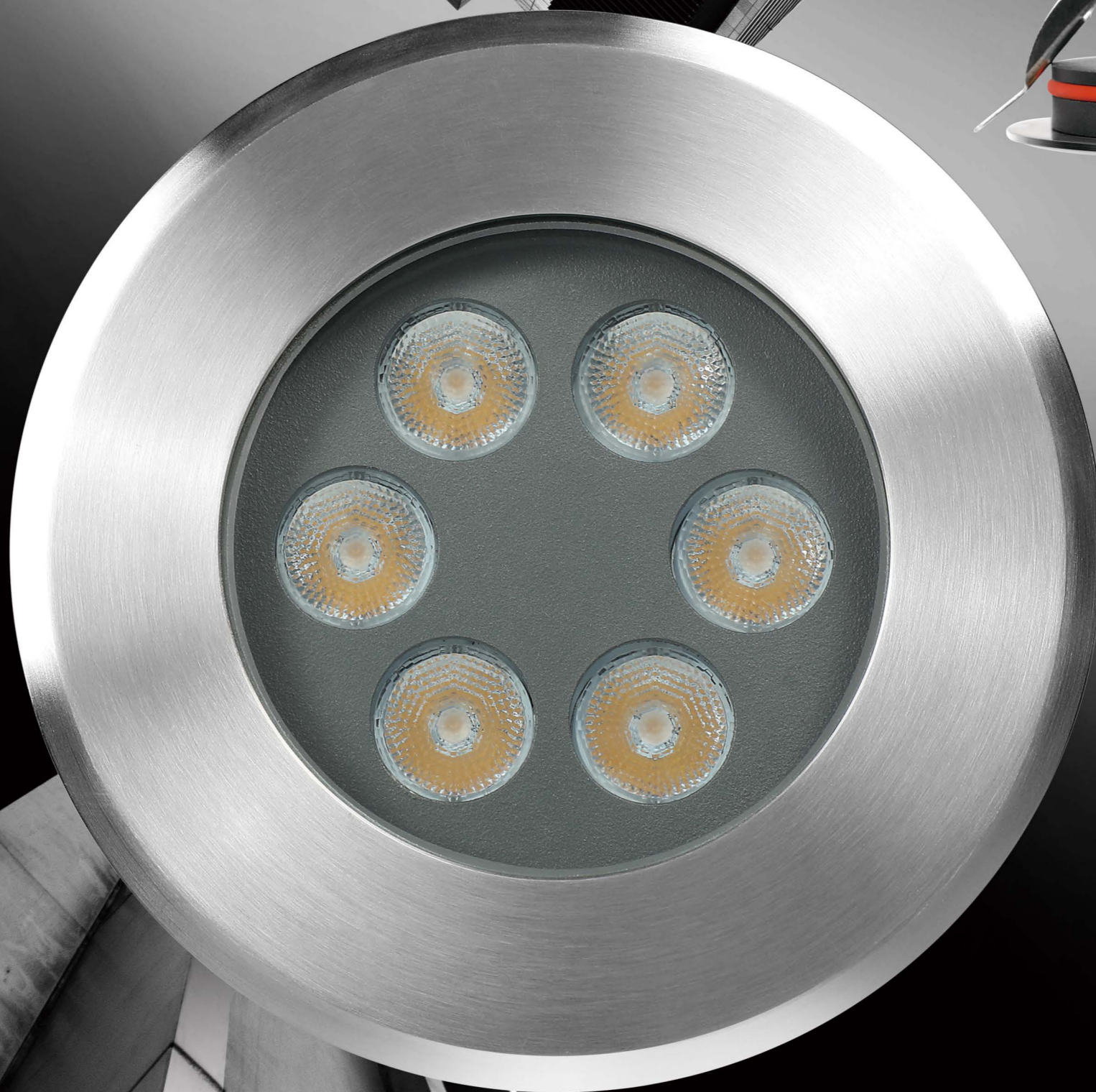
1.1 GROUND DECORATION INGROUND LIGHTS SERIES





# INGROUND LIGHTS SERIES

1.2 SMD LED GROUND SPOT SERIES





# INGROUND LIGHTS SERIES

1.3 ADJUSTABLE DIRECTION GROUND SPOT SERIES





# INGROUND LIGHTS SERIES

1.4 GU10 /MR16 GROUND SPOT SERIES





# INGROUND LIGHTS SERIES

1.5 COB LED GROUND SPOT SERIES





# INGROUND LIGHTS SERIES

1.8 DEPTH ILLUMINANT ANTI-GLARE GROUND SPOT SERIES







Specialized in Exterior LED Lighting

# DECK LIGHTS/ WATERPROOF DOWNLIGHT SERIES

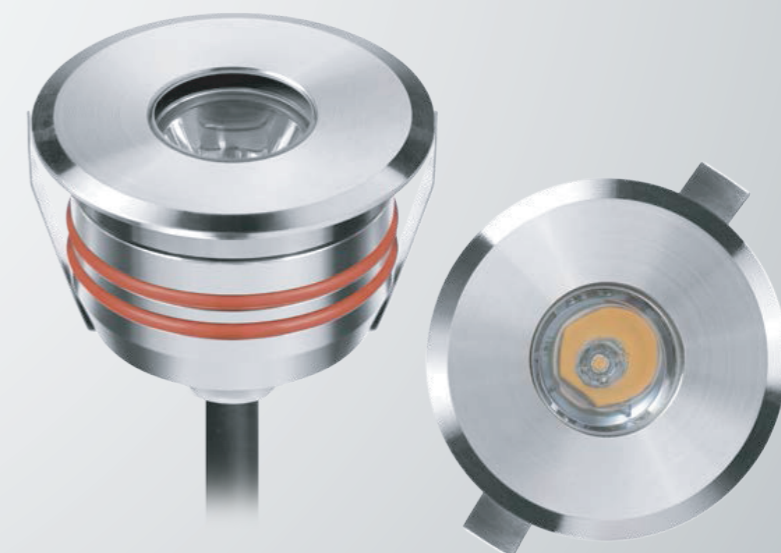
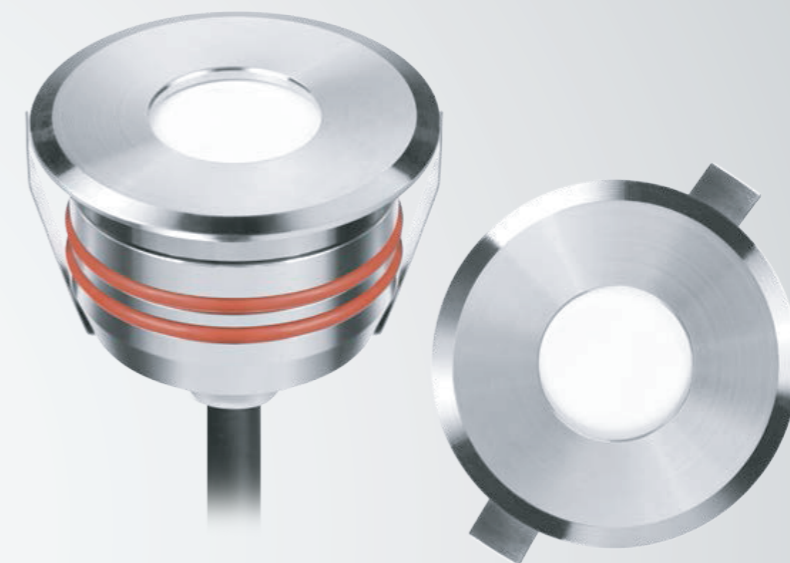
## Products Features

These products are designed with stainless steel 316 trim, Solid 6063 Aluminum housing CNC machined, with passivated (anodizing) anti-corrosion finishing for housing, tempered glass for high loading capacity, silicone gasket and glue for waterproof IP65/IP67 and high quality CREE or OSRAM LED LED.

These products are with CE, RoHS certifications, and the SAA, PSE, UL or ETL certifications will be available in the coming future.

## Application

These lights are widely used in the exterior or interior application, such as lighting road, architectural features, landscape features for the hotel, the garden, the park, the square, the stair step, the landscape road, outdoor ceiling, roof etc.



SSS 316

3 Years Warranty



IP65 IP67 IK06







Specialized in Exterior LED Lighting

# GARDEN LIGHTS SERIES

## Products Features

These products are designed with solid 6063 Aluminum housing CNC machined for better cooling performance, with passivated (anodizing) anti-corrosion finishing for housing, optics PMMA lens or reflector with wonderful light output, tempered glass for high loading capacity, silicone gasket and cable gland for waterproof IP67 and high quality CREE LED, EPISTAR LED.

We make several series of garden lights to meet different application with different power, color, beam angle, and the spot lights with replaceable GU10 lamp or MR16 lamp are available.

These products are with CE, RoHS certifications, and the SAA, PSE, UL or ETL certifications will be available in the coming future.

## Application

These lights are widely used in the exterior or interior application, such as lighting columns, walls, architectural features, landscape features for the hotel, the garden, the park, the trees, the flowers etc.



Passivated

3 Years Warranty

CE RoHS COMPLIANT IP67 IK04







Specialized in Exterior LED Lighting

# LED PROJECTOR LIGHTING SERIES

## Products Features

These products are designed with die-casting aluminium, with powder coated painting anti-corrosion finishing for housing in black color, optics PMMA lens with wonderful light output, tempered glass for high loading capacity, silicone gasket and cable gland for waterproof IP65 and high quality OSRAM LED, good quality built-in constant current driver.

These products are with CE, RoHS certifications, and the SAA, PSE, UL or ETL certifications will be available in the coming future.

## Application

These lights are widely used in the exterior application, such as lighting columns, walls, trees, architectural features, landscape features for the hotel, the garden, the park, the building etc.

**3 Years Warranty**

CE  IP65 IK04







Specialized in Exterior LED Lighting

# LED WALL WASHER SERIES

## Products Features

These products are designed with stretched aluminium / solid aluminium, with Passivated (Anodizing) anti-corrosion finishing for housing in black color or grey color, optics PMMA lens with wonderful light output, tempered glass for high loading capacity, silicone gasket and cable gland for waterproof IP65 and high quality OSRAM LED.

These products are with CE, RoHS certifications, and the SAA, PSE, UL or ETL certifications will be available in the coming future.

## Application

These lights are widely used in the exterior application, such as lighting walls, architectural features, landscape features for the hotel, the garden, the park, the building etc.



3 Years Warranty



IP65 IP68 IK04





Specialized in Exterior LED Lighting

# LED HANDRAIL LIGHTS SERIES

## Products Features

These products are designed with stainless steel 316 housing, optics PMMA reflector with wonderful light output, silicone gasket and silicone glue for waterproof IP67 and high quality CREE LED.

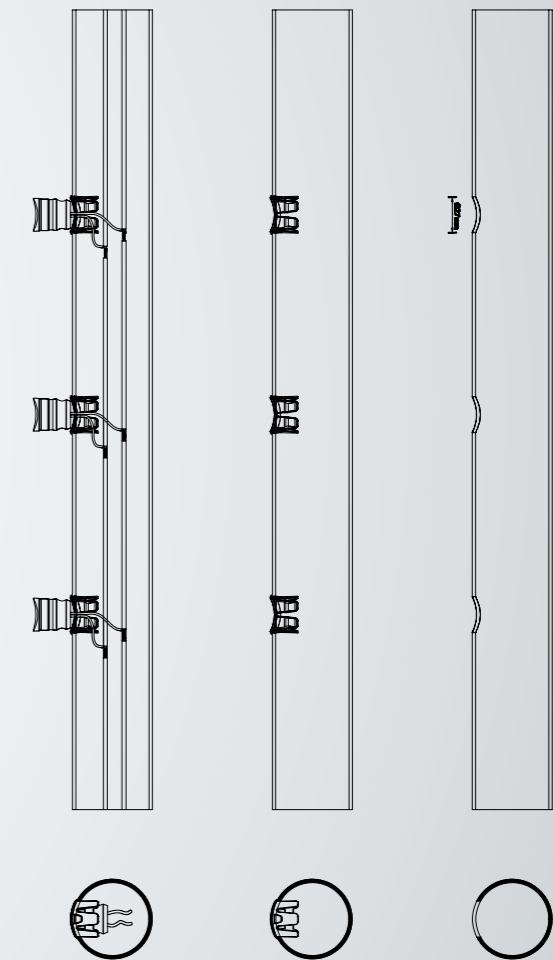
The handrail light DL-1014-0100-A is suitable for standard handrail with  $\varnothing 48\sim 60\text{mm}$ , and wall thickness of 1~2mm for a  $\varnothing 27\text{mm}$  hole, and With PC spring for fast recessed installation.

These handrail lights can be easily and fast retrofitted into existing handrail

These products are with CE, RoHS certifications, and the SAA, PSE, UL or ETL certifications will be available in the coming future.

## Application

These lights are widely used in the exterior or interior handrail in multiple places, such handrail at the house, handrail in the metro, handrail in the gallery, handrail for the stair etc.



SSS 316

3 Years Warranty





**Notice:**

All of the products and the pictures in this catalogue are with the protection of copyright law.They can't be issued at any other catalogues or other medias if it's without our company's permission.We keep the right to investigate and affix legal liability if any infringements for the products in this catalogue,including the structure design patent,apperance design,all of the pictures etc..

The copyright of all of the pictures in this catalogue is belong to ***Puyuan Electronic Illumination Co., Ltd.***

---

**ULED<sup>®</sup>**

**Puyuan Electronic Illumination Co., Ltd.**

Heshan Factory HQ Telephone: 86-750-8218796 or 86-750-8219436

Guangzhou sales office tel:+86-020-38556026

Fax: 86-750-8218786

Email:info1@pyledlight.com; leofuj@hotmail.com

Skype No.: eason2015

Zip: 529725

Factory HQ Addr: Building C,No.15 Zhulang Road, Zhulang Heji Industrial Park, Taoyuan Town, Heshan city, Guangdong, China

Guangzhou Sales Office: Lixiangdi building, Fengye Road, Tangxia Town, Tianhe District, Guangzhou city, Guangdong, China