



FOSHAN ZHIDE HOUSE FURNITURE CO., LTD

M:+86-13927742036

WHATSAPP:+86-13927742036 WECHAT:+86-13927742036

P:+86-757-23376869 F:+86-757-2337686

WEBSITE:WWW.ERCHIFURNIUTE.COM EMAIL:ADMIN@ERCHIFURNITURE.COM

ADD:SECOND FLOOR, GUANGHUA STREET, XIXI COMMUNITY, LONGJIANG TOWN, SHUNDE  
DISTRICT, FOSHAN CITY

ERCHI 而驰 | AISUN

ERCHI 而驰 | AISUN

ERCHI 而驰 | AISUN



ERCHI 而驰 | AISUN



# COMPANY PROFILE

ERCHI FURNITURE IS THE MAIN BRAND PROMOTED BY ZHIDE FURNITURE GROUP. SINCE ITS ESTABLISHMENT IN 2006, IT HAS EMERGED IN THE FURNITURE MARKET WITH ITS UNIQUE DESIGN CONCEPT, EXCELLENT QUALITY AND UNREMITTING PURSUIT OF INNOVATION. WITH THE STRONG SUPPORT OF THE GROUP, ERCHI FURNITURE IS EXTREMELY STRICT IN THE SELECTION OF RAW MATERIALS. IT CAREFULLY SELECTS EACH MATERIAL TO ENSURE THE QUALITY AND SUSTAINABILITY OF PRODUCTS. PURCHASING MOST OF THE RAW MATERIALS, PACKAGING AND SEMI-FINISHED PRODUCTS FROM NEARBY SUPPLIERS NOT ONLY ENSURES THE STABILITY OF SUPPLY, BUT ALSO LAYS A SOLID FOUNDATION FOR THE QUALITY COMMITMENT OF "MADE IN FOSHAN".



IN TERMS OF DESIGN, ERCHI FURNITURE HAS A PROFESSIONAL INTERNAL R & D DEPARTMENT, WHICH COMBINES CREATIVITY WITH UNIQUE DESIGN EXPERTISE AND CONTINUOUS EXPLORATION OF NEW MATERIALS, TECHNOLOGIES AND PROCESSES TO CONTINUOUSLY INTRODUCE NEW PRODUCTS. ITS DESIGN NOT ONLY PAYS ATTENTION TO THE BALANCE OF FASHION SENSE AND PRACTICABILITY, BUT ALSO CAN MEET THE INDIVIDUALIZED NEEDS OF DIFFERENT CONSUMERS. WHETHER IT IS MODERN MINIMALIST STYLE OR ITALIAN LIGHT LUXURY STYLE, ERCHI FURNITURE CAN PRESENT A DIFFERENT CHARM WITH EXQUISITE CRAFTSMANSHIP AND UNIQUE DESIGN. ERCHI FURNITURE'S PRODUCTS COVER MULTIPLE SERIES, INCLUDING LIVING ROOM SPACE, DINING ROOM SPACE, CLOAKROOM, BEDROOM SPACE AND TEA ROOM SPACE. IN RECENT YEARS, THE CUSTOMIZED SUPPORTING SERVICES PROVIDED BY ERCHI FURNITURE HAVE BEEN HIGHLY PRAISED BY NEW AND OLD CUSTOMERS. ITS PRODUCTS ARE NOT ONLY POPULAR IN THE DOMESTIC MARKET, BUT ALSO EXPORTED TO MANY COUNTRIES AND REGIONS, OCCUPYING AN IMPORTANT POSITION IN THE INTERNATIONAL MARKET. NOWADAYS, THE FOREIGN MARKET ACCOUNTS FOR ABOUT 70% OF THE COMPANY'S REVENUE, FULLY DEMONSTRATING ITS INTERNATIONAL INFLUENCE. ERCHI FURNITURE IS KNOWN FOR ITS UNIQUE AND EXCLUSIVE HIGH-QUALITY PRODUCTS. MOST OF THE DESIGNS ARE COMPLETED EXCLUSIVELY BY ITSELF. EVEN REPLICAS ARE OFTEN DIFFERENT. IT CONTINUOUSLY SURPASSES OTHER PRODUCTS IN TERMS OF QUALITY AND DURABILITY. IT IS DIFFICULT FOR YOU TO FIND PRODUCTS OF THE SAME QUALITY ELSEWHERE, WHICH ALSO MAKES ERCHI FURNITURE A SYMBOL OF QUALITY AND TASTE IN THE HEARTS OF CONSUMERS. IN THE FUTURE, IT IS BELIEVED THAT ERCHI FURNITURE WILL CONTINUE TO ADHERE TO THE CONCEPTS OF INNOVATION, QUALITY AND DESIGN, BRING MORE STUNNING FURNITURE WORKS TO CONSUMERS, AND LEAD THE DEVELOPMENT TREND OF THE FURNITURE INDUSTRY.



KILLI·库里

一件好的家居不仅是一件物品也是一款艺术品  
A good home is not only an object but also a work of art





## FLOOR SAMPLE SKYLINE COFFEE TABLE FROM GIORGETTI DESIGNED BY CARLO COLOMBO



ITEN NO: DC-6604    SIZE: 113.5\*119.5\*30CM    DIA105\*35CM    51\*51\*59CM

FINISHES: SKYLINE COFFEE TABLE , TOP IN ASH-STAINED WALNUT VENEER AND SADDLE LEATHER , BRUSHED GREY STAINLESS STEEL BASE WITH TEMPERED GLASS.

ROUND, SQUARE, RECTANGULAR AND PENTAGONAL LOW TABLE IN METAL PEWTER FINISHED, WITH TOP AVAILABLE IN DIFFERENT MATERIALS.





COFFEE TABLE

FASHIONABLE & MINIMALIST.2024

FASHIONABLE & MINIMALIST.2024



FINISHES: SKYLINE COFFEE TABLE , TOP IN ASH-STAINED WALNUT VENEER AND SADDLE LEATHER , BRUSHED GREY STAINLESS STEEL BASE WITH TEMPERED GLASS.

ROUND, SQUARE, RECTANGULAR AND PENTAGONAL LOW TABLE IN METAL PEWTER FINISHED, WITH TOP AVAILABLE IN DIFFERENT MATERIALS.



DJ-6605B



## DRAKE COFFEE TABLES FROM MINOTTI DESIGN BY HANNES PEER



ITEN NO: DC-6616    SIZE: 110\*110\*28CM    DIA90\*32CM    50\*40\*49CM

THE DRAKE COFFEE TABLES STAND OUT FOR THE REFINED BALANCE BETWEEN THE USE OF A SINGLE MATERIAL - MARBLE, WOOD OR GLOSSY LACQUER - AND THE SENSATION OF LIGHTNESS EXPRESSED BY THE TOP, SUSPENDED BETWEEN THE LEGS.

AN EFFECT CREATED BY THE UNION OF DIFFERENT ELEMENTS THAT MEET IN A DYNAMIC INTERPLAY OF FORM AND FUNCTION: THE LEGS ARE THICKER THAN THE TOP - BOTH WITH ROUNDED EDGES - HIGHLIGHTING THIS UNPRECEDENTED EXPRESSION OF LIGHTNESS.

A FAMILY OF COFFEE TABLES AND CONSOLE TABLES IN DIFFERENT SHAPES AND SIZES, IDEAL FOR COMPLEMENTING CONTEMPORARY LIVING SPACES.





DC-6617A



DC-6617B



DC-6617C

CREATED BY THE GIORGETTI R&D CENTER, THE GRIFFE LOW COFFEE TABLES IS AN ELEGANT AND DYNAMIC OPTION FOR DECORATING YOUR LIVING ROOM.

STONES AND SHAPES FRAMED IN WOOD, DARING PERSPECTIVES, PLAYS OF LIGHT AND HIDDEN PRECIOUSNESS CHARACTERISE THE THREE GRIFFE COFFEE TABLES.



SOORI COFFEE TABLE FROM POLIFORM  
DESIGN BY SOO CHAN



DC-8830B

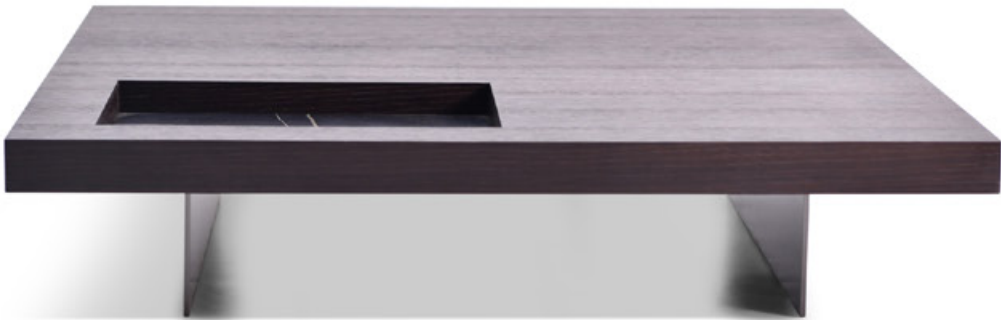
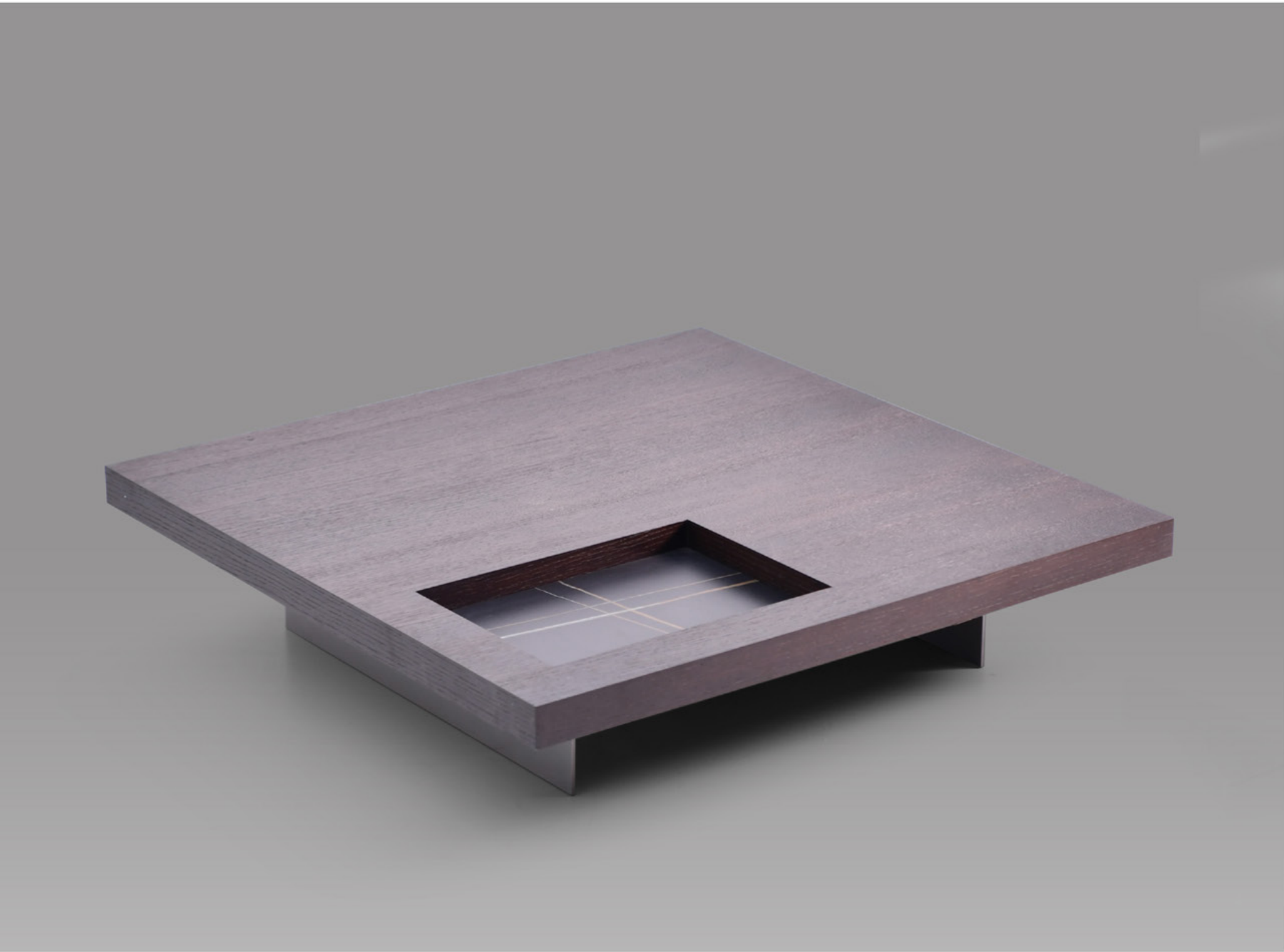
INSPIRED BY BALI AND ITS CULTURE, AND IN PARTICULAR, BY THE TRADITIONAL VASES USED IN THE VILLAGES ON THE IDYLIC INDONESIAN ISLAND, SOORI IS A COFFEE TABLE WITH AN ORIGINAL AND RECOGNISABLE AESTHETIC CHARM, WHICH STANDS OUT BOTH IN THE LIVING ROOM AND IN THE BED-ROOM. IT IS AVAILABLE IN THREE SIZES IN WOODEN FRAME WITH AN ANTIQUED BRONZE PAINTING FINISH AND, FOR THE SMALLEST MODEL, ALSO IN A GLOSSY OR MATT LACQUER FINISH. THE TOP WITH NICE SPLICING WALNUT VENEER COVER .



DC-8853

ERCHE 而驰 AISUN  
13/14





DC-8851





DC-6633

## 圆形茶几

VSTKL-DC-8850-100



DC-8850







AN OVERLAPPING OF SHAPES AND SKILLFUL COMBINATION OF LUXURY MATERIALS - THESE ARE BENSON'S DISTINCTIVE TRAITS. ITS SCULPTED FORM IS ENHANCED BY THE SUBSTANCE OF WOOD AND THE SHINE OF METAL.

THE BENSON OCCASIONAL TABLE SITS RIGHT ON THE FLOOR AND COMES IN TWO DIFFERENT SIZES THAT COMPLEMENT ITS INTENDED USE. THE COFFEE TABLE MEASURES 125X96 CM AND IS COMPOSED OF AN ELLIPTICAL BASE AND A RAISED CIRCULAR TOP EQUIPPED WITH A MECHANISM THAT ALLOWS IT TO TURN 360 DEGREES AND MAKES THE TABLE TOP EXTENDABLE TOWARDS THE SOFA. THE SIDE TABLE IS 46 CM IN DIAMETER AND 31 CM HIGH AND WAS SPECIFICALLY DESIGNED TO BE PLACED ALONGSIDE A SOFA OR ARMCHAIR. IT IS AVAILABLE IN THE FOLLOWING COMBINATIONS: IN ONE VERSION, THE BASE IS IN GLOSSY EBONY PAIRED WITH THE UPPER TOP IN SATIN-FINISHED BRONZE METAL AND ANOTHER VARIATION WITH THE BASE IN GLOSSY LACQUERED MOKA AND UPPER TOP IN GLOSSY GOLD FINISH.

DC-6631

ERCHI 而驰 AISUN







BENSON COFFEE TABLE FROM MINOTTI DESIGN BY RODOLFO DORDONI

ITEN NO: DC-8814B      SIZE: (125-146) \*96\* (17-31) CM

# ERCHI 而馳 AISUN

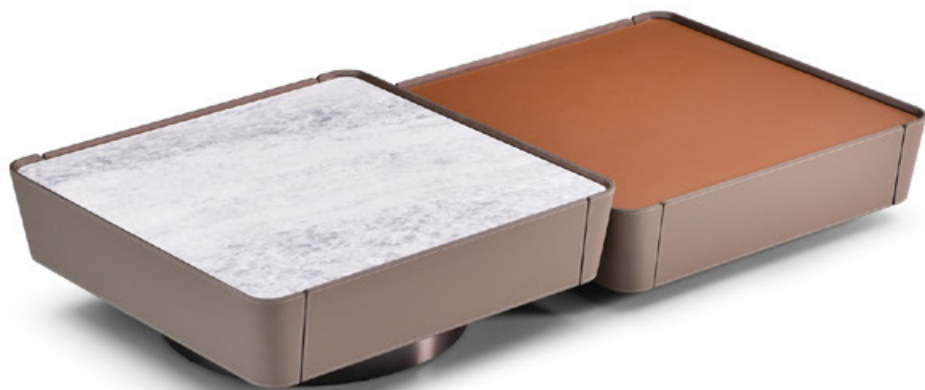
CURVED HONEYCOMB PLYWOOD. UPPER AND LOWER TOPS IN MDF. THE CIRCULAR, 65 CM UPPER TABLE TOP IS COMPLETELY ENCASED IN A METAL SHEET. THE 139 CM SURFACE OF THE UPPER TABLE TOP IS IN THE SAME FINISH AS THAT CHOSEN FOR THE ELLIPTICAL BASE. A METAL SHEET BORDER FINISHES THE EDGE OF THE LOWER TOP. THE 65 CM UPPER TABLE TOP IS FIXED IN PLACE, WHILE THE UPPER TOP OF THE 139 CM TABLE TURNS 360° CLOCKWISE AND COUNTERCLOCKWISE. PROTECTIVE FELT GLIDES.

LOWER ELLIPTICAL BASE IN COMPOSITE EBONY VENEER WITH GLOSSY TRANSPARENT POLYESTER FINISH; UPPER CIRCULAR TOP IS IN SATIN-FINISH METAL WITH BRONZE PAINT FINISH. SINCE THE SATIN FINISH IS HANDCRAFTED, THE UPPER TOP MAY EXHIBIT SLIGHTLY DIFFERENT NUANCES; LOWER ELLIPTICAL BASE WITH GLOSSY MOKA LACQUER FINISH; UPPER CIRCULAR TOP IS IN METAL WITH BRIGHT GOLD-PLATED FINISH (ELECTROPLATE).





ERC-而 AISUN



DC-138

CURVED HONEYCOMB PLYWOOD. UPPER AND LOWER TOPS IN MDF. THE CIRCULAR, 65 CM UPPER TABLE TOP IS COMPLETELY ENCASED IN A METAL SHEET. THE 139 CM SURFACE OF THE UPPER TABLE TOP IS IN THE SAME FINISH AS THAT CHOSEN FOR THE ELLIPTICAL BASE. A METAL SHEET BORDER FINISHES THE EDGE OF THE LOWER TOP. THE 65 CM UPPER TABLE TOP IS FIXED IN PLACE, WHILE THE UPPER TOP OF THE 139 CM TABLE TURNS 360° CLOCKWISE AND COUNTERCLOCKWISE. PROTECTIVE FELT GLIDES.

LOWER ELLIPTICAL BASE IN COMPOSITE EBONY VENEER WITH GLOSSY TRANSPARENT POLYESTER FINISH; UPPER CIRCULAR TOP IS IN SATIN-FINISH METAL WITH BRONZE PAINT FINISH. SINCE THE SATIN FINISH IS HANDCRAFTED, THE UPPER TOP MAY EXHIBIT SLIGHTLY DIFFERENT NUANCES; LOWER ELLIPTICAL BASE WITH GLOSSY MOKA LACQUER FINISH; UPPER CIRCULAR TOP IS IN METAL WITH BRIGHT GOLD-PLATED FINISH (ELECTROPLATE).







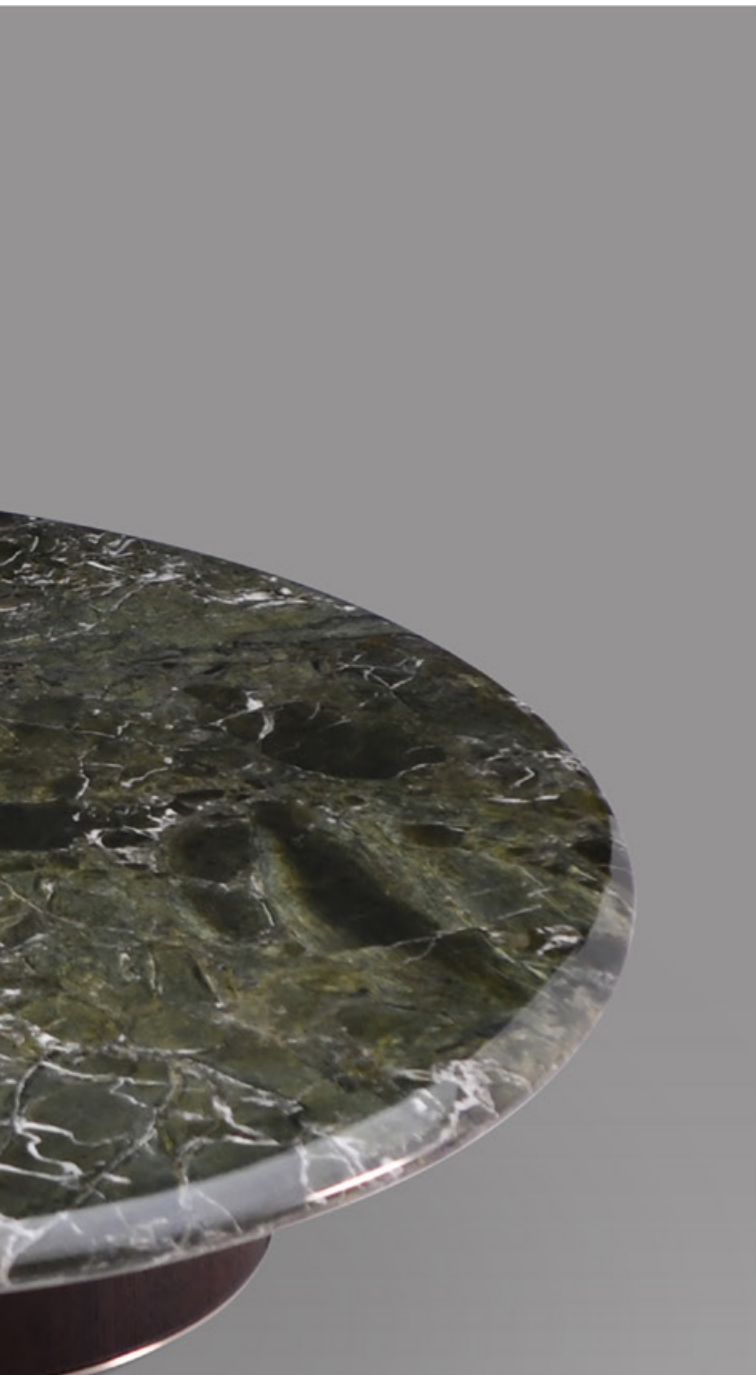
TO CREATE THESE COFFEE TABLES, ARCHITECT MAURO LIPPARINI FOCUSED ON A MINIMALIST DESIGN AND COMBINED THE BOLD GEOMETRIC SHAPE OF THE METAL SUPPORT WITH THE CURVED CONTOURS OF THE TOPS, AVAILABLE IN A VARIETY OF FINISHES, CREATING A FORMAL CONTRAST EXPRESSED WITH THE UTMOST LIGHTNESS. THEY ARE PERFECT EITHER POSITIONED IN THE MIDDLE OF THE ROOM OR TO THE SIDE OF THE SOFA.



DC-8816

DJ-8816





ERC-1 而馳 AISUN

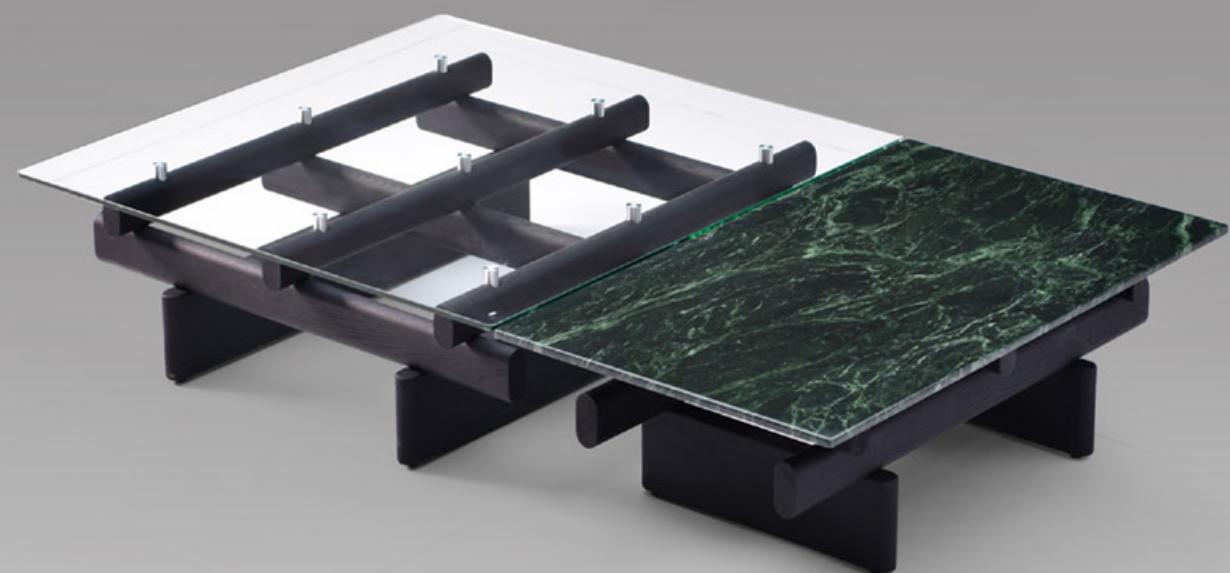
CURVED HONEYCOMB PLYWOOD. UPPER AND LOWER TOPS IN MDF. THE CIRCULAR, 65 CM UPPER TABLE TOP IS COMPLETELY ENCASED IN A METAL SHEET. THE 139 CM SURFACE OF THE UPPER TABLE TOP IS IN THE SAME FINISH AS THAT CHOSEN FOR THE ELLIPTICAL BASE. A METAL SHEET BORDER FINISHES THE EDGE OF THE LOWER TOP. THE 65 CM UPPER TABLE TOP IS FIXED IN PLACE, WHILE THE UPPER TOP OF THE 139 CM TABLE TURNS 360° CLOCKWISE AND COUNTERCLOCKWISE. PROTECTIVE FELT GLIDES.



DC-6630A

DC-6630B





DC-8847



ERCHI 而馳 AISUN

CURVED HONEYCOMB PLYWOOD. UPPER AND LOWER TOPS  
IN MDF. THE CIRCULAR, 65 CM UPPER TABLE TOP IS COM-  
PLETELY ENCASED IN A METAL SHEET. THE 139 CM SURFACE  
OF THE UPPER TABLE TOP IS IN THE SAME FINISH AS THAT  
CHOSEN FOR THE ELLIPTICAL BASE. A METAL SHEET BORDER  
FINISHES THE EDGE OF THE LOWER TOP. THE 65 CM UPPER  
TABLE TOP IS FIXED IN PLACE, WHILE THE UPPER TOP OF  
THE 139 CM TABLE TURNS 360° CLOCKWISE AND COUNTER-  
CLOCKWISE. PROTECTIVE FELT GLIDES.





COFFEE TABLE

FASHIONABLE & MINIMALIST.2024



FASHIONABLE & MINIMALIST.2024



DC-8836A

DC-8836B

CURVED HONEYCOMB PLYWOOD. UPPER AND LOWER TOPS IN MDF. THE CIRCULAR, 65 CM UPPER TABLE TOP IS COMPLETELY ENCASED IN A METAL SHEET. THE 139 CM SURFACE OF THE UPPER TABLE TOP IS IN THE SAME FINISH AS THAT CHOSEN FOR THE ELIPTICAL BASE. A METAL SHEET BORDER FINISHES THE EDGE OF THE LOWER TOP. THE 65 CM UPPER TABLE TOP IS FIXED IN PLACE, WHILE THE UPPER TOP OF THE 139 CM TABLE TURNS 360° CLOCKWISE AND COUNTERCLOCKWISE. PROTECTIVE FELT GLIDES.





CURVED HONEYCOMB PLYWOOD. UPPER AND LOWER TOPS IN MDF. THE CIRCULAR, 65 CM UPPER TABLE TOP IS COMPLETELY ENCASED IN A METAL SHEET. THE 139 CM SURFACE OF THE  
UPPER TABLE TOP IS IN THE SAME FINISH AS THAT CHOSEN FOR THE ELLIPTICAL BASE. A METAL SHEET BORDER FINISHES THE EDGE OF THE LOWER TOP. THE 65 CM UPPER TABLE TOP IS  
FIXED IN PLACE, WHILE THE UPPER TOP OF THE 139 CM TABLE TURNS 360° CLOCKWISE AND COUNTERCLOCKWISE. PROTECTIVE FELT GLIDES.

DC-8837A    DC-8837B    DC-8837C



## COFFEE TABLE

FASHIONABLE & MINIMALIST.2024



FASHIONABLE & MINIMALIST.2024



CURVED HONEYCOMB PLYWOOD. UPPER AND LOWER TOPS  
IN MDF. THE CIRCULAR, 65 CM UPPER TABLE TOP IS COM-  
PLETELY ENCASED IN A METAL SHEET. THE 139 CM SURFACE  
OF THE UPPER TABLE TOP IS IN THE SAME FINISH AS THAT  
CHOSEN FOR THE ELLIPTICAL BASE. A METAL SHEET  
BORDER FINISHES THE EDGE OF THE LOWER TOP. THE 65 CM  
UPPER TABLE TOP IS FIXED IN PLACE, WHILE THE UPPER  
TOP OF THE 139 CM TABLE TURNS 360° CLOCKWISE AND  
COUNTERCLOCKWISE. PROTECTIVE FELT GLIDES.



DC-6607

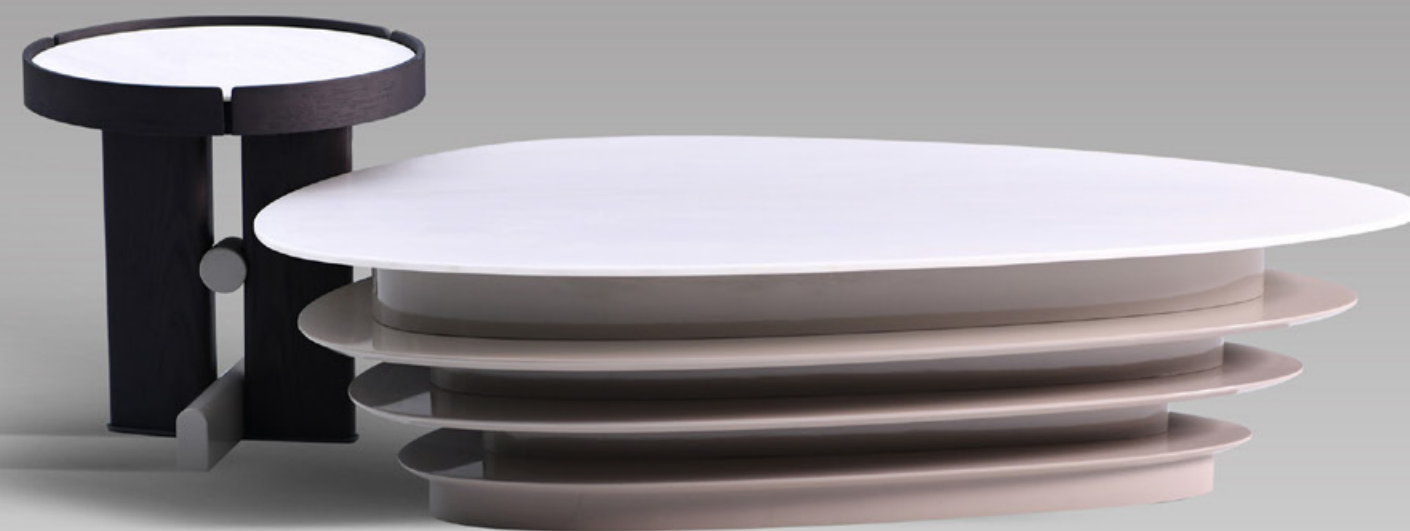


# 极简茶几组合

VSTKL-DC-8816-147-50



DC-8816 DJ-8816



DC-8820



CURVED HONEYCOMB PLYWOOD. UPPER AND LOWER TOPS IN MDF. THE CIRCULAR, 65 CM UPPER TABLE TOP IS COMPLETELY ENCASED IN A METAL SHEET. THE 139 CM SURFACE OF THE UPPER TABLE TOP IS IN THE SAME FINISH AS THAT CHOSEN FOR THE ELLIPTICAL BASE. A METAL SHEET BORDER FINISHES THE EDGE OF THE LOWER TOP. THE 65 CM UPPER TABLE TOP IS FIXED IN PLACE, WHILE THE UPPER TOP OF THE 139 CM TABLE TURNS 360° CLOCKWISE AND COUNTERCLOCKWISE. PROTECTIVE FELT GLIDES.





# 极简组合茶几

VSTEC-DC-6629ABC-140-68-55



DC-6629





DC-8801





# 极简组合茶几

VSTKL-DC-8806-120



DC-8806, DJ-8806A



DC-6613

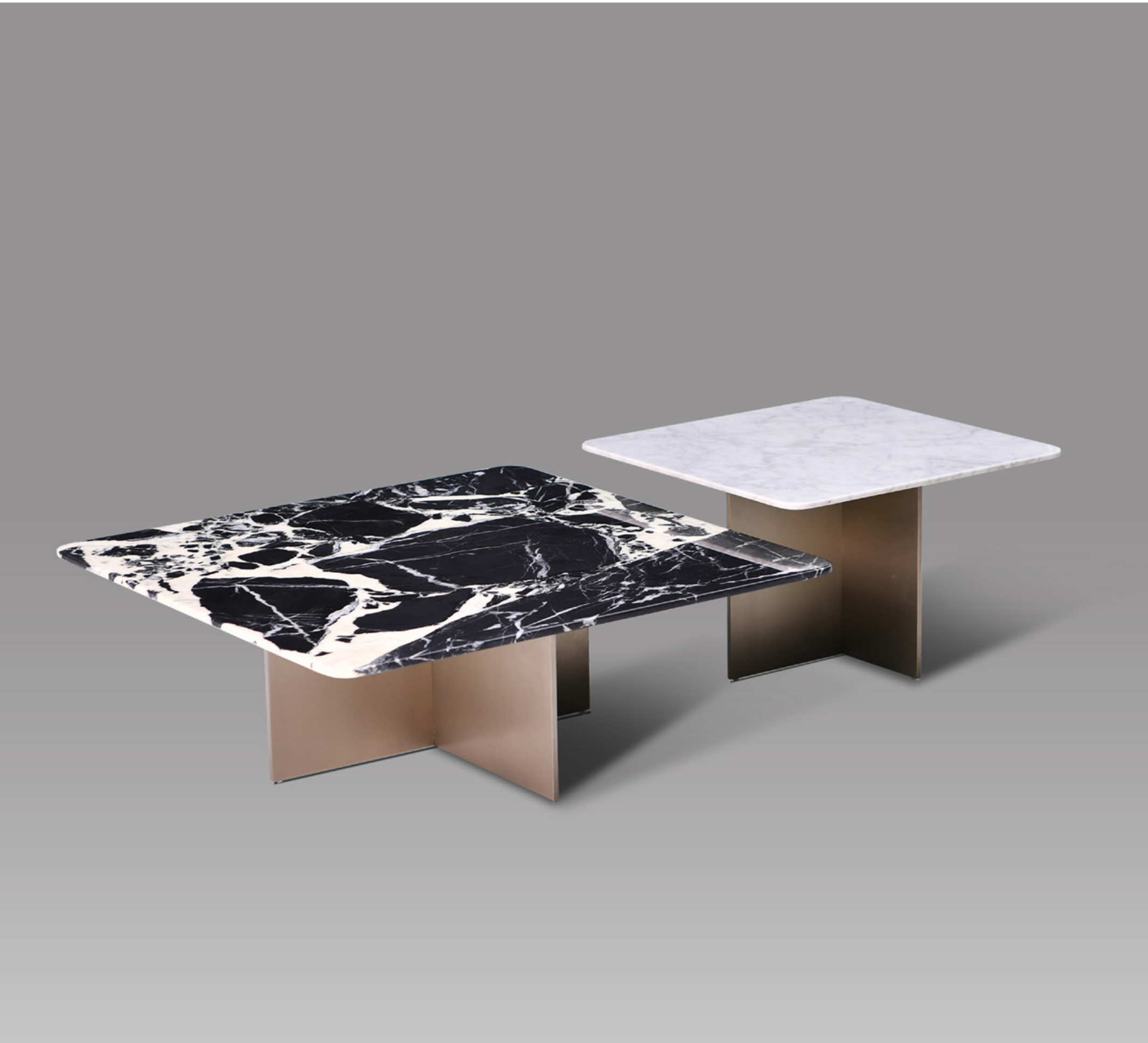


DC-6628



DC-8803





DC-8827



# 极简云朵组合茶几

VSTKL-DC-8829B-125



DC-8829B



DC-8831A DJ-8831



DC-8837



# ERCHI 而驰 AISUN

CURVED HONEYCOMB PLYWOOD. UPPER AND LOWER TOPS

IN MDF. THE CIRCULAR, 65 CM UPPER TABLE TOP IS COM-

PLETELY ENCASED IN A METAL SHEET. THE 139 CM SURFACE

OF THE UPPER TABLE TOP IS IN THE SAME FINISH AS THAT

CHOSEN FOR THE ELLIPTICAL BASE. A METAL SHEET

BORDER FINISHES THE EDGE OF THE LOWER TOP. THE 65 CM

UPPER TABLE TOP IS FIXED IN PLACE, WHILE THE UPPER

TOP OF THE 139 CM TABLE TURNS 360° CLOCKWISE AND

COUNTERCLOCKWISE. PROTECTIVE FELT GLIDES.

DC-8814A,DJ-8814





DC-6601





DC-6622



DC-6626



# 极简方形组合茶几

VSTEC-DC-6624AB-90-90



DC-6624





DC-6632 DJ-6613





# 极简大小圆茶几

VSTKL-DC-8808B-90-65



DC-8808B DC-8802D



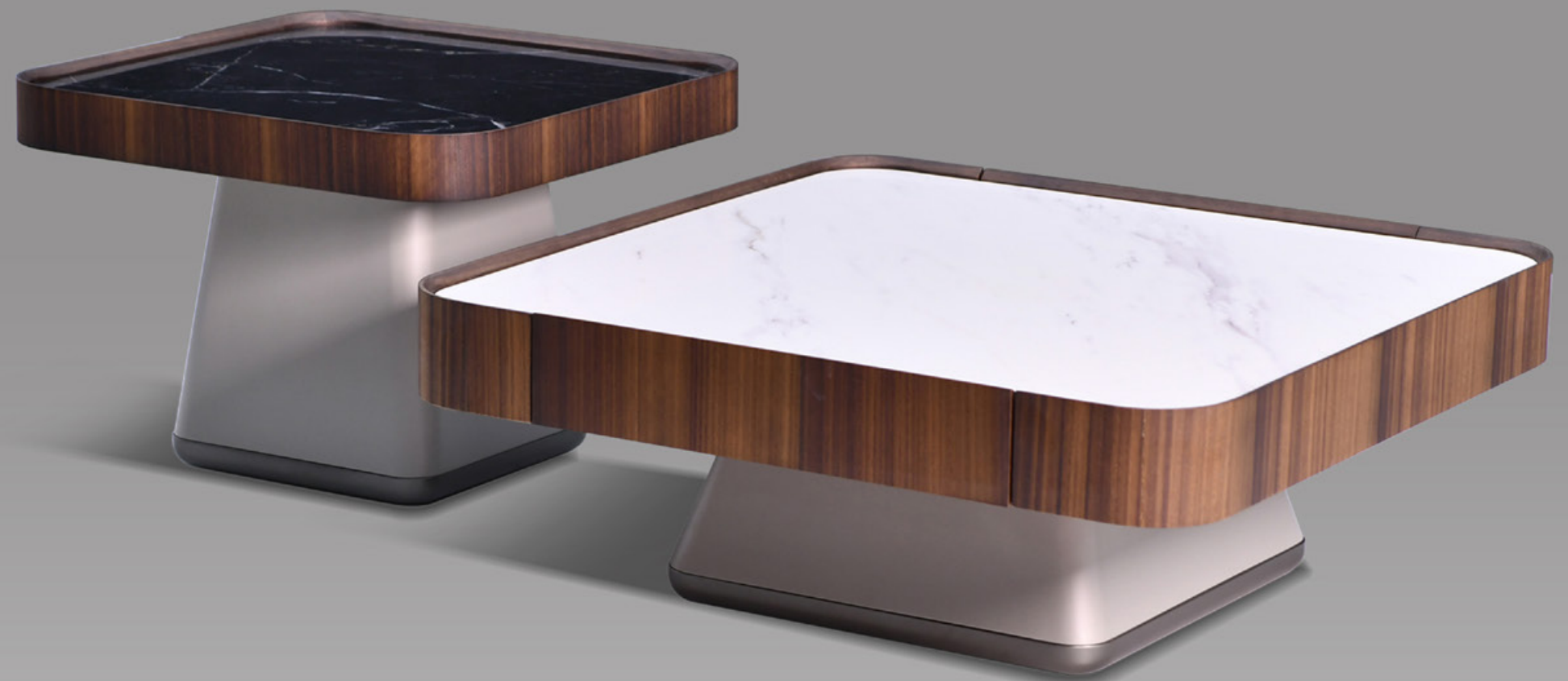


DC-8810





DC-8811





# 极简组合茶几

VSTKL-DC-8832-138-56



DC-8832 DJ-8832





DC-8852







DJ-2508A

ERCHI 而馳 AISUN

IN QUESTA PAGINA: COMODINO GENTLEMAN IN NOCE GOLD CON TOP IN LACCATO OPACO CHAMPAGNE, BASAMENTO CON PIEDINI CHAMPAGNE OPACO.

THIS PAGE: GENTLEMAN COFFEE TABLE IN GOLD WALNUT WITH TOP IN MAT LAC-QUER CHAMPAGNE, BASE WITH FEET IN MAT CHAMPAGNE.





ERC-HI 而馳 AISUN

IN QUESTA PAGINA: COMODINO GENTLEMAN IN NOCE GOLD CON TOP IN LACCATOOPACO CHAMPAGNE, BASAMENTO CON PIEDINI CHAMPAGNE OPACO.

THIS PAGE: GENTLEMAN COFFEE TABLE IN GOLD WALNUT WITH TOP IN MAT LAC-QUERCHAMPAGNE, BASE WITH FEET IN MAT CHAMPAGNE.



DJ-6603

DJ-2508A







DJ-6613

ERC-HI 而馳 AISUN



DJ-8806A





DJ-8819A

IN QUESTA PAGINA: COMODINO GENTLEMAN IN NOCE GOLD CON TOP IN LACCATOOPACO CHAMPAGNE,BASAMENTO CON PIEDINI CHAMPAGNE OPACO.

THIS PAGE: GENTLEMAN COFFEE TABLE IN GOLD WALNUT WITH TOP IN MAT LAC-QUERCHAMPAGNE,BASE WITH FEET IN MAT CHAMPAGNE.

ERC- 而 馳 AISUN





ERCHI 而驰 AISUN

DJ-8831



DJ-8832



# 小茶几

VSTKL-DJ-8849-60



DJ-8849

ERCHI 而驰 AISUN



DJ-8841





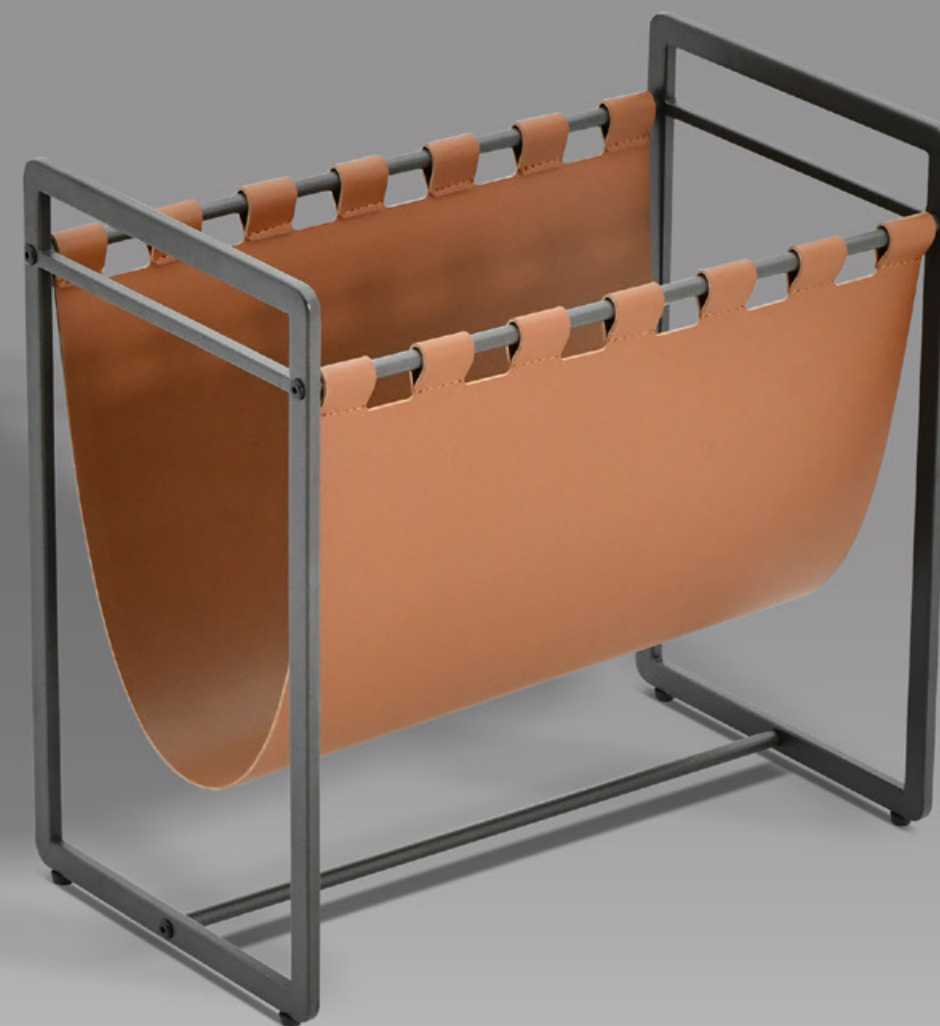
DJ-8854

ERCHI 而馳 AISUN

IN QUESTA PAGINA: COMODINO GENTLEMAN IN NOCE GOLD CON TOP IN LACCATOOPACO CHAMPAGNE,BASAMENTO CON PIEDINI CHAMPAGNE OPACO.

THIS PAGE: GENTLEMAN COFFEE TABLE IN GOLD WALNUT WITH TOP IN MAT LAC-QUERCHAMPAGNE,BASE WITH FEET IN MAT CHAMPAGNE.





DS-6613

ERC-HI 而馳 AISUN

DS-8840







DS-8841

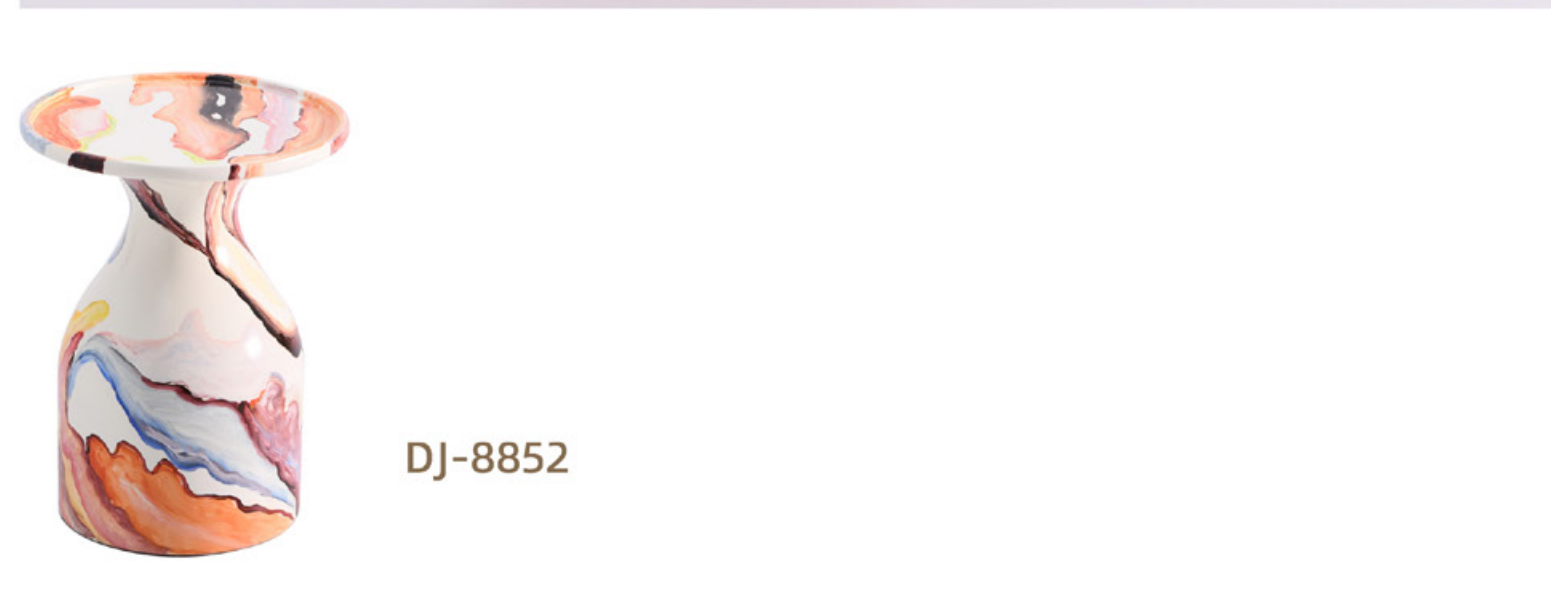


DJ-8815





DJ-8848



DJ-8852





ERCHI 而馳 AISUN

DJ8850

IN QUESTA PAGINA: COMODINO GENTLEMAN IN NOCE GOLD CON TOP IN LACCATOOPACO CHAMPAGNE,BASAMENTO CON PIEDINI  
CHAMPAGNE OPACO.

THIS PAGE: GENTLEMAN COFFEE TABLE IN GOLD WALNUT WITH TOP IN MAT LAC-QUERCHAMPAGNE,BASE WITH FEET IN MAT  
CHAMPAGNE.



DJ-8851



DS-8809A

COFFEE TABLE

FASHIONABLE & MINIMALIST.2024

FASHIONABLE & MINIMALIST.2024



DC-6623A

DC-6623B



DC-8817



DC-6623C



DJ-8805A



DJ-8805B



DJ-8809



DC-8839C



DC-8839D



DC-8839A



DJ-8815



COFFEE TABLE

FASHIONABLE & MINIMALIST.2024

FASHIONABLE & MINIMALIST.2024



DJ-6605B



DS-2811



DS-2966



DC-2866



DC-6601



DC-6601B



DC-6601C



DC-6604



DC-6605D



DC-6607A



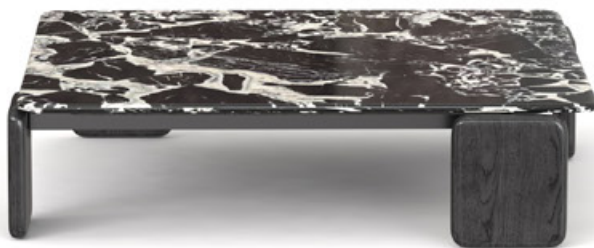
DC-6607B



DC-6613A



DC-6613B



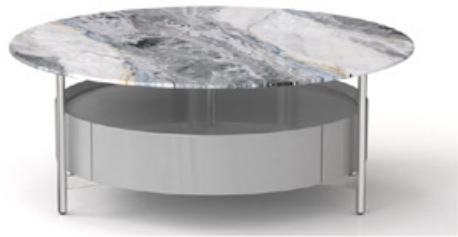
DC-6616A



DC-6616B



DC-6619



DC-8803A



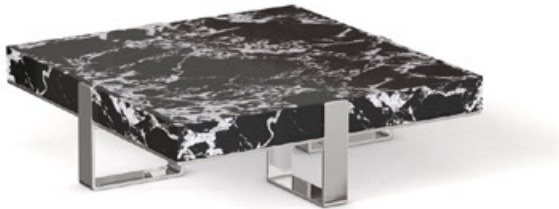
DC-8806



DC-8808



DC-8812B



DC-8814A



DC-8814B



DC-8816



DC-8829B



DC-8836A



DC-8836B



DC-8837B



DC-8837C



DJ-6616



DJ-6619



DJ-8806A



DJ-8807



COFFEE TABLE

FASHIONABLE & MINIMALIST.2024

FASHIONABLE & MINIMALIST.2024



DC-6604C



DC-6629B



DJ-8812



DJ-8816



DS-6613



EC-C001



EC-C002



EC-C003



EC-C004



EC-C005



EC-C006



EC-C007



DC-6629C



DC-8801E



DJ-8829A



DS-2301



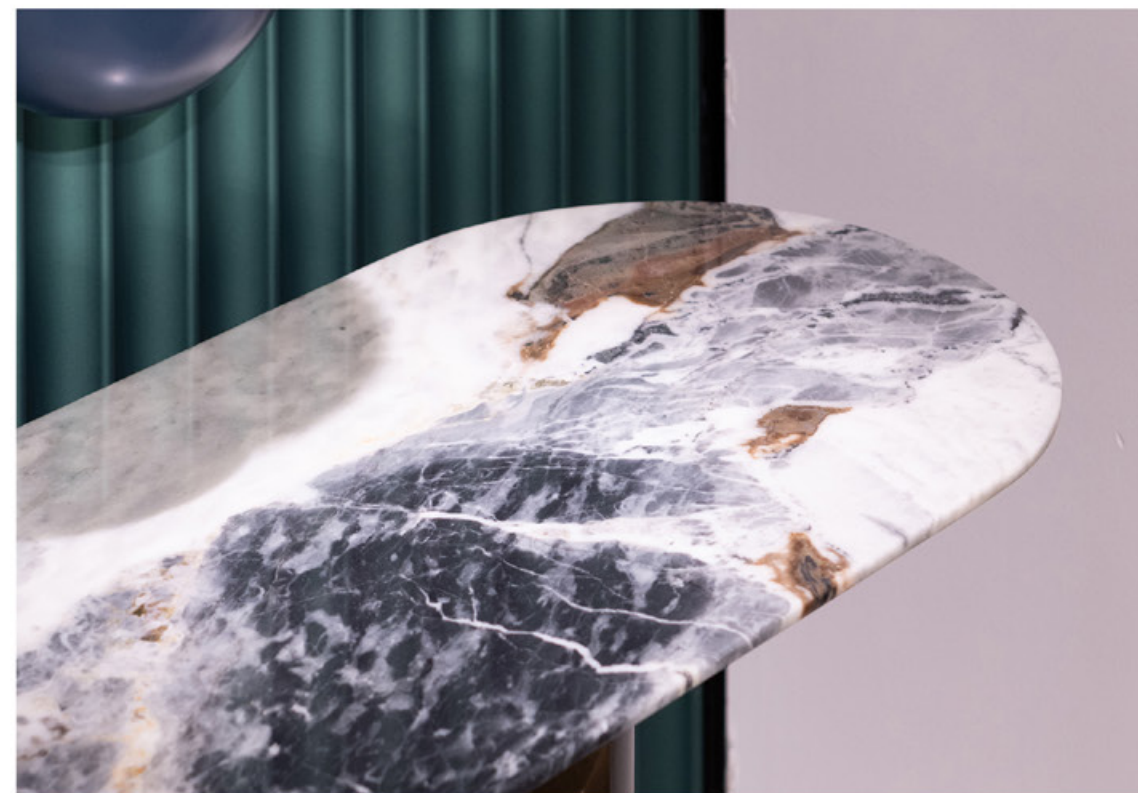


ESPOSITORI E CONTENITORI ALLO STESSO TEMPO, LE MADIE SONO COMPLEMENTI IMMANCABILI NELLA ZONA GIORNO. DALL'ELEMENTO PIÙ SEMPLICE AL SISTEMA COMPLESSO, DALLO STILE CLASSICO A QUELLO CONTEMPORANEO, SEMPRE CON UN OCCHIO DI RIGUARDO AI MATERIALI, LA COLLEZIONE DI MADIE DI POLIFORM È MOLTO VARIATA, GRAZIE ALLE PROPOSTE DEI DESIGNER JEAN-MARIE MASSAUD, EMMANUEL GALLINA E CARLO COLOMBO. DISPLAY AND STORAGE UNITS AT THE SAME TIME, SIDEBORDS ARE ESSENTIAL ADDITIONS TO THE DAY AREA. FROM THE SIMPLEST ELEMENT TO THE COMPLEX SYSTEM, FROM THE CLASSIC STYLE TO THE CONTEMPORARY ONE, ALWAYS WITH A SPECIAL ATTENTION TO MATERIALS. POLIFORM'S COLLECTION OF SIDEBORDS IS VERY VARIED, THANKS TO THE OFFERS BY THE DESIGNERS JEAN-MARIE MASSAUD, EMMANUEL GALLINA AND CARLO COLOMBO.

AISUN

三  
二  
一  
零  
九  
八  
七  
六  
五  
四  
三  
二  
一  
零





# AISUN

ESPOSITORI E CONTENITORI ALLO STESSO TEMPO, LE MADIE SONO COMPLEMENTI IMMANCABILI NELLA ZONA GIORNO. DALL'ELEMENTO PIÙ SEMPLICE AL SISTEMA COMPLESSO, DALLO STILE CLASSICO A QUELLO CONTEMPORANEO, SEMPRE CON UN OCCHIO DI RIGUARDO AI MATERIALI, LA COLLEZIONE DI MADIE DI POLIFORM È MOLTO VARIATA, GRAZIE ALLE PROPOSTE DEI DESIGNER JEAN-MARIE MASSAUD, EMMANUEL GALLINA E CARLO COLOMBO. DISPLAY AND STORAGE UNITS AT THE SAME TIME, SIDEBORDS ARE ESSENTIAL ADDITIONS TO THE DAY AREA. FROM THE SIMPLEST ELEMENT TO THE COMPLEX SYSTEM, FROM THE CLASSIC STYLE TO THE CONTEMPORARY ONE, ALWAYS WITH A SPECIAL ATTENTION TO MATERIALS. POLIFORM'S COLLECTION OF SIDEBORDS IS VERY VARIED, THANKS TO THE OFFERS BY THE DESIGNERS JEAN-MARIE MASSAUD, EMMANUEL GALLINA AND CARLO COLOMBO.





## CONSOLE TABLE

FASHIONABLE & MINIMALIST.2024



FASHIONABLE & MINIMALIST.2024

QUI E NELLE PAGINE PRECEDENTI: MADIE SYMPHONY IN ROVERE GOLD CON TOPIN MARMO LEVIGATO SAHARA NOIR FINITURA POLIESTERE, BASAMENTO CON PIEDINIE MANIGLIA IN BROWN NICKEL OPACO, TAVOLO HENRY CON PIANO IN MARMOLEVIGATO SAHARA NOIR FINITURA POLIESTERE E STRUTTURA IN OLMO NERO. SEDIESOPHIE LITE CON BRACCIOLI, RIVESTIMENTO SFODERABILE IN TESSUTO ANTEA 03VISONO E STRUTTURA IN OLMO NERO. TAPPETO CANNELÉ. SOTTO: STRUTTURA INTER-NA IN ROVERE GOLD, CASSETTIERA CON FONDO RIVESTITO IN TECNOCOVER GRAIN06 NOCCIOLA, ATTREZZATA CON PORTAPO-SATE IN MASSELLO TINTO ROVERE GOLDE FONDO IN TECNOCOVER GRAIN 06 NOCCIOLA, RIPIANO IN VETRO FUMÉ, LUCE ALED INTEGRATA CON SENSORE. THIS AND PREVIOUS PAGES: SYMPHONY SIDEBOARDS IN GOLD OAK WITH TOP INMAT MARBLE SAHARA NOIR POLYESTER FINISH, BASE WITH FEET AND HANDLE INMAT BROWN NICKEL. HENRY TABLE WITH TOP IN MAT MARBLE SAHARA NOIR POLY-ESTER FINISH AND STRUCTURE IN BLACK ELM. SOPHIE LITE CHAIRS WITH ARMRESTSWITH REMOVABLE COVER IN FABRIC ANTEA 03 VISONO AND STRUCTURE IN BLACKELM.CARPET CANNELÉ. BELOW: INNER STRUCTURE IN GOLD OAK, CHEST OF DRAW-ERS WITH BOTTOM IN TECNOCOVER GRAIN 06 NOCCIOLA, ACCESSORIZED WITHCUTLERY TRAY IN SOLID WOOD STAINED GOLD OAK AND BOTTOM IN TECNOCOVERGRAIN 06 NOCCIOLA, SHELF IN GLASS FUMÉ, INTEGRATED LED LIGHT WITH SENSOR.



# AISUN





BAXTER YVES DESIGNED BY ROBERTO LAZZERONI IS A DRESSING TABLE, A DESK, A CONSOLE. THE IDEA BEHIND YVES IS TO CREATE A SIMPLE BUT MULTIFUNCTIONAL LINE, WITH SMALL DETAILS THE SAME PIECE OF FURNITURE TAKES ON THREE DIFFERENT IDENTITIES. THE STRUCTURE CAN BE CHOSEN IN SATIN-FINISH BRASS-PLATED METAL, HAND-BRUSHED BURNISHED METAL, OR SATIN NICKEL-PLATED METAL. THE STRUCTURE OF THE CABINET IS IN MDF COMPLETELY COVERED IN LEATHER.

THE DRESSING TABLE IS CHARACTERIZED BY A FLAP TOP WITH AN OVAL MIRROR, THE INTERNAL STRUCTURE OF THE COMPARTMENTS IS IN SHEET METAL COVERED IN LEATHER. THE DESK STANDS OUT FOR THE DRAWERS IN INDIA ROSEWOOD WITH A MATT FINISH AND SMALL DECORATIVE DETAILS IN METAL. THE CONSOLE, INSTEAD, HAS ONLY ONE LACQUERED DRAWER COMPARTMENT.



DH-2811



DH-2844



DH-8840



## CONSOLE TABLE

FASHIONABLE & MINIMALIST.2024

BAXTER YVES DESIGNED BY ROBERTO LAZZERONI IS A DRESSING TABLE, A DESK, A CONSOLE. THE IDEA BEHIND YVES IS TO CREATE A SIMPLE BUT MULTIFUNCTIONAL LINE, WITH SMALL DETAILS THE SAME PIECE OF FURNITURE TAKES ON THREE DIFFERENT IDENTITIES. THE STRUCTURE CAN BE CHOSEN IN SATIN-FINISH BRASS-PLATED METAL, HAND-BRUSHED BURNISHED METAL, OR SATIN NICKEL-PLATED METAL. THE STRUCTURE OF THE CABINET IS IN MDF COMPLETELY COVERED IN LEATHER.

THE DRESSING TABLE IS CHARACTERIZED BY A FLAP TOP WITH AN OVAL MIRROR, THE INTERNAL STRUCTURE OF THE COMPARTMENTS IS IN SHEET METAL COVERED IN LEATHER. THE DESK STANDS OUT FOR THE DRAWERS IN INDIA ROSEWOOD WITH A MATT FINISH AND SMALL DECORATIVE DETAILS IN METAL. THE CONSOLE, INSTEAD, HAS ONLY ONE LACQUERED DRAWER COMPARTMENT.



DH-8829



FASHIONABLE & MINIMALIST.2024





ERCHI 而驰



DS-2307

ESPOSITORI E CONTENITORI ALLO STESSO TEMPO, LE MADIE SONO COMPLEMENTI IMMANCABILI NELLA ZONA GIORNO. DALL'ELEMENTO PIÙ SEMPLICE AL SISTEMA COMPLESSO, DALLO STILE CLASSICO A QUELLO CONTEMPORANEO, SEMPRE CON UN OCCHIO DI RIGUARDO AI MATERIALI, LA COLLEZIONE DI MADIE DI POLIFORM È MOLTO VARIEGATA, GRAZIE ALLE PROPOSTE DEI DESIGNER JEAN-MARIE MASSAUD, EMMANUEL GALLINA E CARLO COLOMBO.

DISPLAY AND STORAGE UNITS AT THE SAME TIME, SIDEBOARDS ARE ESSENTIAL ADDITIONS TO THE DAY AREA. FROM THE SIMPLEST ELEMENT TO THE COMPLEX SYSTEM, FROM THE CLASSIC STYLE TO THE CONTEMPORARY ONE, ALWAYS WITH A SPECIAL ATTENTION TO MATERIALS. POLIFORM'S COLLECTION OF SIDEBOARDS IS VERY VARIED, THANKS TO THE OFFERS BY THE DESIGNERS JEAN-MARIE MASSAUD, EMMANUEL GALLINA AND CARLO COLOMBO.

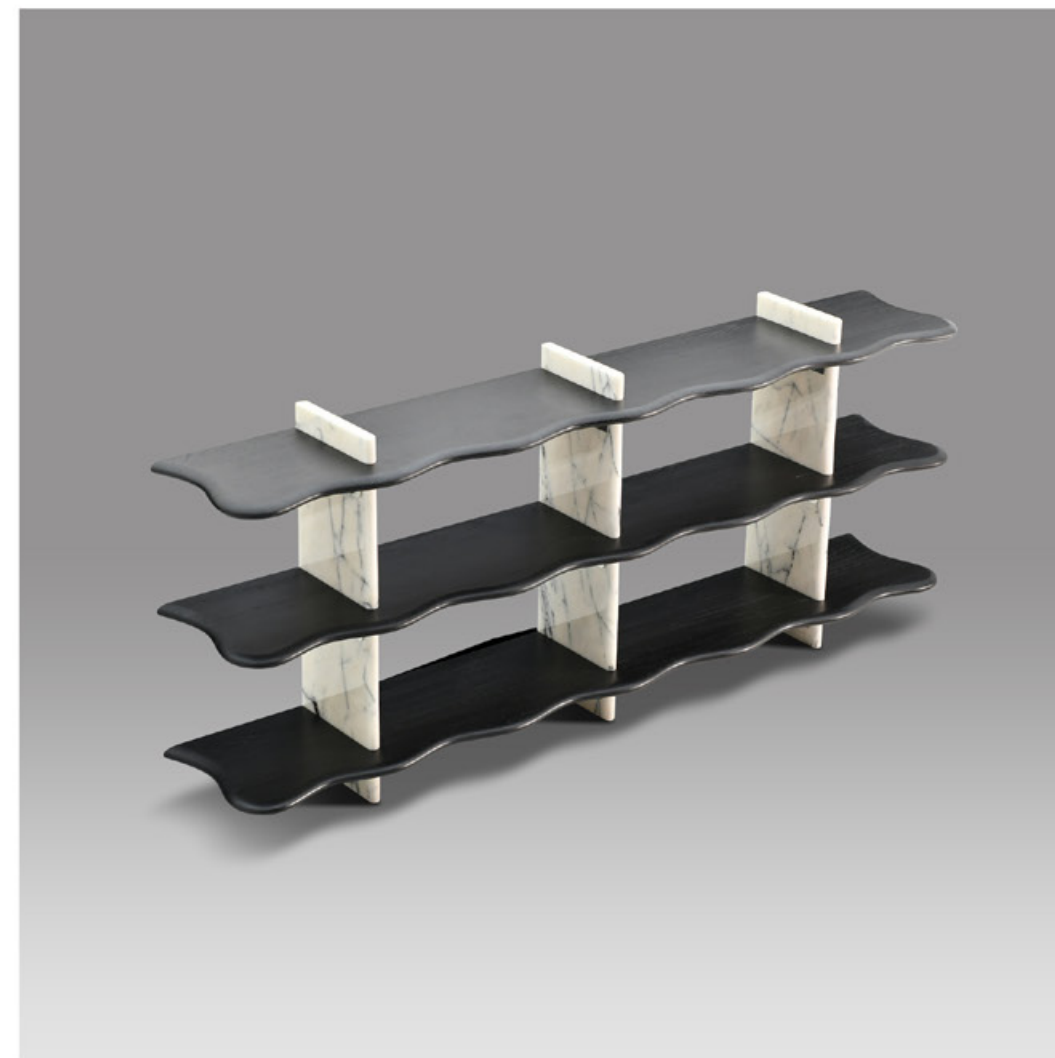


DS-1802



ERCHI 而驰





ERCHEI 而驰



DS-6603C



DS-6603C



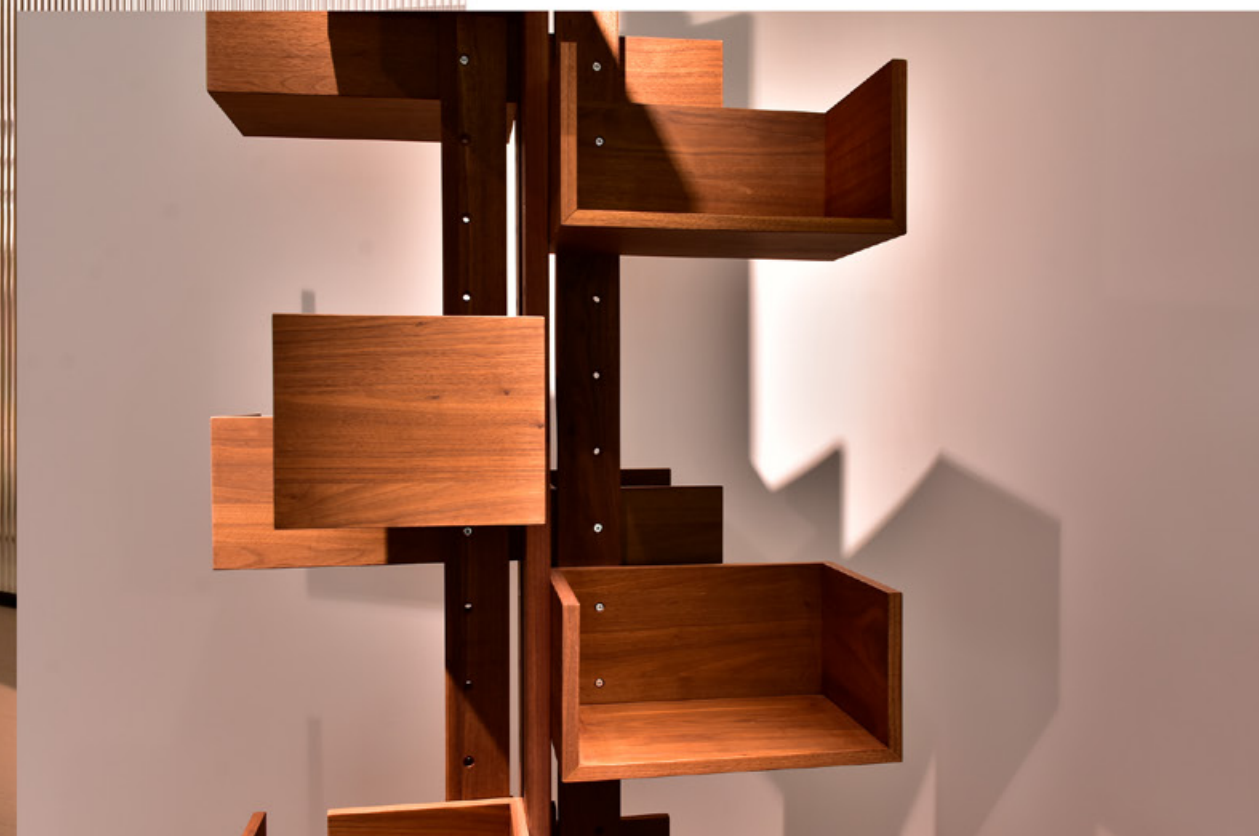
DS-6632



# ERCHI 而驰

ESPOSITORI E CONTENITORI ALLO STESSO TEMPO, LE MADIE SONO COMPLEMENTI IMMANCABILI NELLA ZONA GIORNO. DALL'ELEMENTO PIÙ SEMPLICE AL SISTEMA COMPLESSO, DALLO STILE CLASSICO A QUELLO CONTEMPORANEO, SEMPRE CON UN OCCHIO DI RIGUARDO AI MATERIALI. LA COLLEZIONE DI MADIE DI POLIFORM È MOLTO VARIEGATA, GRAZIE ALLE PROPOSTE DEI DESIGNER JEAN-MARIE MASSAUD, EMMANUEL GALLINA E CARLO COLOMBO.

DISPLAY AND STORAGE UNITS AT THE SAME TIME, SIDEBOARDS ARE ESSENTIAL ADDITIONS TO THE DAY AREA. FROM THE SIMPLEST ELEMENT TO THE COMPLEX SYSTEM, FROM THE CLASSIC STYLE TO THE CONTEMPORARY ONE, ALWAYS WITH A SPECIAL ATTENTION TO MATERIALS. POLIFORM'S COLLECTION OF SIDEBOARDS IS VERY VARIED, THANKS TO THE OFFERS BY THE DESIGNERS JEAN-MARIE MASSAUD, EMMANUEL GALLINA AND CARLO COLOMBO.



ERCHI 而驰



DS-8828



ERCHI 而驰



DS-8816A



DS-8816B



DQ-2811

BAXTER YVES DESIGNED BY ROBERTO LAZZERONI IS A DRESSING TABLE, A DESK, A CONSOLE. THE IDEA BEHIND YVES IS TO CREATE A SIMPLE BUT MULTIFUNCTIONAL LINE, WITH SMALL DETAILS THE SAME PIECE OF FURNITURE TAKES ON THREE DIFFERENT IDENTITIES. THE STRUCTURE CAN BE CHOSEN IN SATIN-FINISH BRASS-PLATED METAL, HAND-BRUSHED BURNISHED METAL, OR SATIN NICKEL-PLATED METAL. THE STRUCTURE OF THE CABINET IS IN MDF COMPLETELY COVERED IN LEATHER.

THE DRESSING TABLE IS CHARACTERIZED BY A FLAP TOP WITH AN OVAL MIRROR, THE INTERNAL STRUCTURE OF THE COMPARTMENTS IS IN SHEET METAL COVERED IN LEATHER. THE DESK STANDS OUT FOR THE DRAWERS IN INDIA ROSEWOOD WITH A MATT FINISH AND SMALL DECORATIVE DETAILS IN METAL. THE CONSOLE, INSTEAD, HAS ONLY ONE LACQUERED DRAWER COMPARTMENT.















NELLE PAGINE PRECEDENTI E IN CHIUSURA: TAVOIO BLADE CON STRUTTURA E PIA-NO IN MASSELLO NOCE CANALETTO. SEDIE SEATTLE CON E SENZA BRACCIOLI, SE.DUTA E GAMBE RIVESTITE IN CUIOIO NON SFODERABILE 26 INVECCHIATO. CUCINA ALEA PRO, ISOLA CENTRALE CON ESTRATTORI, ANTE, FI-ANCHI DI FINITURA E TOPIN INAICO MDIS STONE BROWN, PROFILO MANIGLIA, SAGOMA E DISTANZLALI INANODIZZATO MOKA, PIANO SNACK SYDNEY IN MASSELLO DI NOCE CANALETTO COLONNE CON ANTE ED ESTRATTORI IN ACCIAIO PVD BRONZO CON DISTANZIALI INANODIZZATO MOKA, COLONNE CON ANTE VETRINA PR24 IN ANODIZZATO MOKAE VETRO RIFLETTENTE FUMÉ, CON STRUTTURA INTERNA IN NOCE CANALETTO NATU-RALE, ILLUMINAZIONE A LED INTEGRATA. QUI E NELLA PAGINA SUCCESSIVA: TAVOLO BLADE CON STRUTTURA E PIANO IN MASSELLO TINTO OLMO NERO.

PREVIOUS PAGES AND CLOSING PAGE: BLADE TABLE WITH STRUCTURE AND TOP IN SOLID WALNUT CANALETTO, SEATTLE CHAIRS WITH AND WITHOUT













LA PERFEZIONE GEOMETRICA DEL CERCHIO INCONTRA L'ELEGANZA DELLACORNICE IN CUOIO: NASCE COSI' CIRCLE, UNO SPECCHIO DA PARETE CHEARREDA CON SEMPLICITÀ OGNI AMBIENTE.

THE GEOMETRIC PERFECTION OF THE CIRCLE MEETS THE ELEGANCE OFTHE HIDE FRAME: THUS RISES CIRCLE, A WALL MIRROR THAT FURNISHESANY ENVIRONMENT WITH SIMPLICITY.





LA PERFEZIONE GEOMETRICA DEL CERCHIO INCONTRA L'ELEGANZA DELLACORNICE IN CUOIO: NASCE COSI' CIRCLE, UNO SPECCHIO DA PARETE CHEARREDA CON SEMPLICITÀ OGNI AMBIENTE.

THE GEOMETRIC PERFECTION OF THE CIRCLE MEETS THE ELEGANCE OFTHE HIDE FRAME: THUS RISES CIRCLE, A WALL MIRROR THAT FURNISHESANY ENVIRONMENT WITH SIMPLICITY.





BAXTER YVES DESIGNED BY ROBERTO LAZZERONI IS A DRESSING TABLE, A DESK, A CONSOLE. THE IDEA BEHIND YVES IS TO CREATE A SIMPLE BUT MULTIFUNCTIONAL LINE, WITH SMALL DETAILS THE SAME PIECE OF FURNITURE TAKES ON THREE DIFFERENT IDENTITIES. THE STRUCTURE CAN BE CHOSEN IN SATIN-FINISH BRASS-PLATED METAL, HAND-BRUSHED BURNISHED METAL, OR SATIN NICKEL-PLATED METAL. THE STRUCTURE OF THE CABINET IS IN MDF COMPLETELY COVERED IN LEATHER. THE DRESSING TABLE IS CHARACTERIZED BY A FLAP TOP WITH AN OVAL MIRROR, THE INTERNAL STRUCTURE OF THE COMPARTMENTS IS IN SHEET METAL COVERED IN LEATHER. THE DESK STANDS OUT FOR THE DRAWERS IN INDIA ROSEWOOD WITH A MATT FINISH AND SMALL DECORATIVE DETAILS IN METAL. THE CONSOLE, INSTEAD, HAS ONLY ONE LACQUERED DRAWER COMPARTMENT.

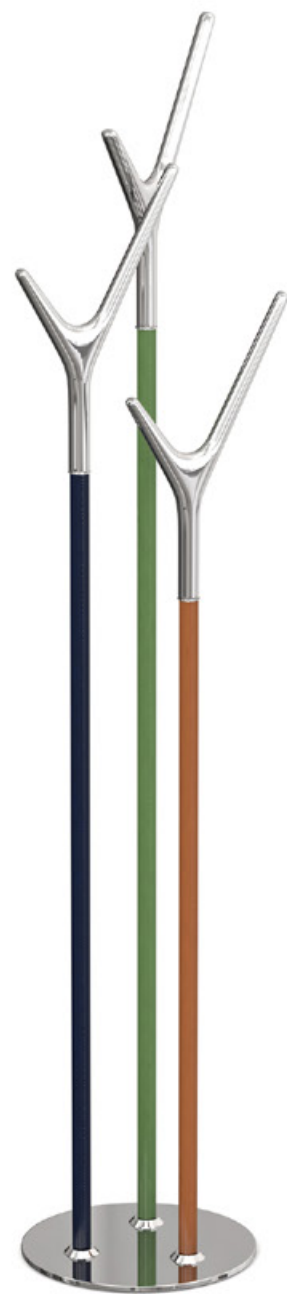




DF-6612

LA PERFEZIONE GEOMETRICA DEL CERCHIO INCONTRA L'ELEGANZA DELLACORNICE IN CUIOIO: NASCE COSI CIRCLE, UNO SPECCHIO DA PARETE CHE-  
ARREDA CON SEMPLICITÀ OGNI AMBIENTE.

THE GEOMETRIC PERFECTION OF THE CIRCLE MEETS THE ELEGANCE OFTHE HIDE FRAME: THUS RISES CIRCLE, A WALL MIRROR THAT FURNISHESANY EN-  
VIRONMENT WITH SIMPLICITY.



DF-6617







A SINISTRA: DETTAGLIO DEL PANNELLO A PARETE IN NOBILITATO SKIN LACCATO OPACO 94 LATTE E DEL RIPIANO IN TECNOPELLE 05 LATTE CON TELAIO ARDESIA OPACO. SOTTO: DETTAGLIO DEL TUBO APPENDIABITI RIVESTITO IN TECNOPELLE 05 LATTE E ARDESIA OPACO, RIPIANO IN NOBILITATO ROVERE CENERE CON FRONTALE ARDESIA OPACO E LUCE LED INTEGRATA.

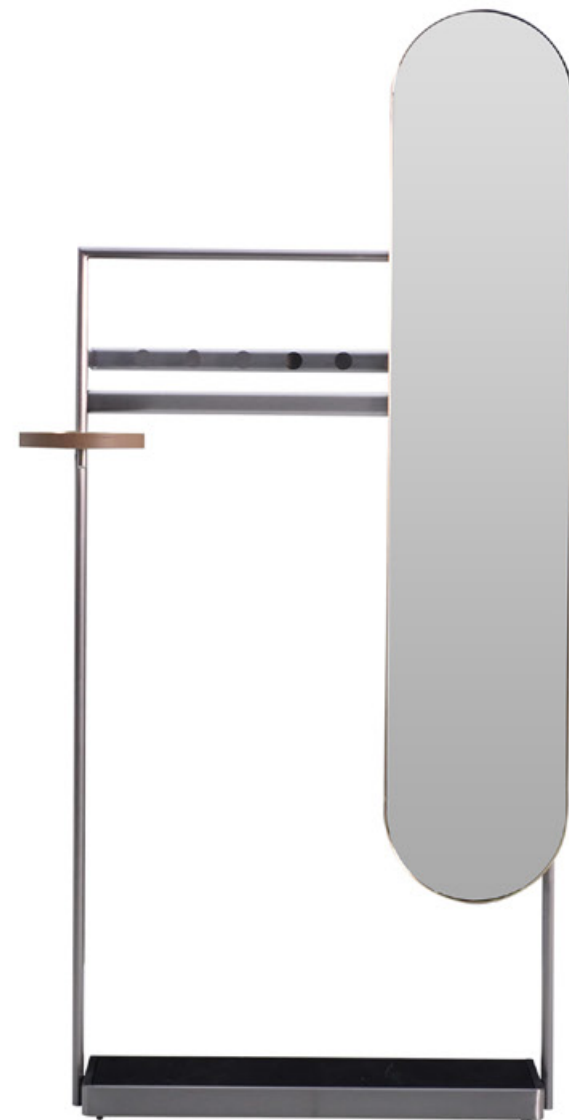
TO THE LEFT: CLOSE UP OF THE WALL MOUNTED PANEL IN 94 LATTE MAT LACQUERED SKIN MELAMINE AND OF THE SHELF IN TECHNO LEATHER 05 LATTE WITH MAT ARDESIA FRAME. BELOW: CLOSE UP OF THE HANGING RAIL COVERED IN TECHNO LEATHER 05 LATTE AND MAT ARDESIA, SHELF IN CENERE OAK MELAMINE WITH MAT ARDESIA FRONT AND INTEGRATED LED LIGHT.











DF-2302







DF-6601







DF-6603A



DF-6613





ERC-1 而馳 AISUN

DF-6604







DF-6619







ERC-1 而馳 AISUN









DF-6622

ERC-HI 而馳 AISUN





DF-8816







ERC-HI 而驰 AISUN



# ERCHI 而驰 AISUN

LA PERFEZIONE GEOMETRICA DEL CERCHIO INCONTRA L'EL-  
EGANZA DELLACORNICE IN CUIO: NASCE COSI CIRCLE,  
UNO SPECCHIO DA PARETE CHEARREDA CON SEMPLICITÀ  
OGNI AMBIENTE.

THE GEOMETRIC PERFECTION OF THE CIRCLE MEETS THE EL-  
EGANCE OFTHE HIDE FRAME: THUS RISES CIRCLE, A WALL  
MIRROR THAT FURNISHESANY ENVIRONMENT WITH SIM-  
PLICITY.

DF-8818

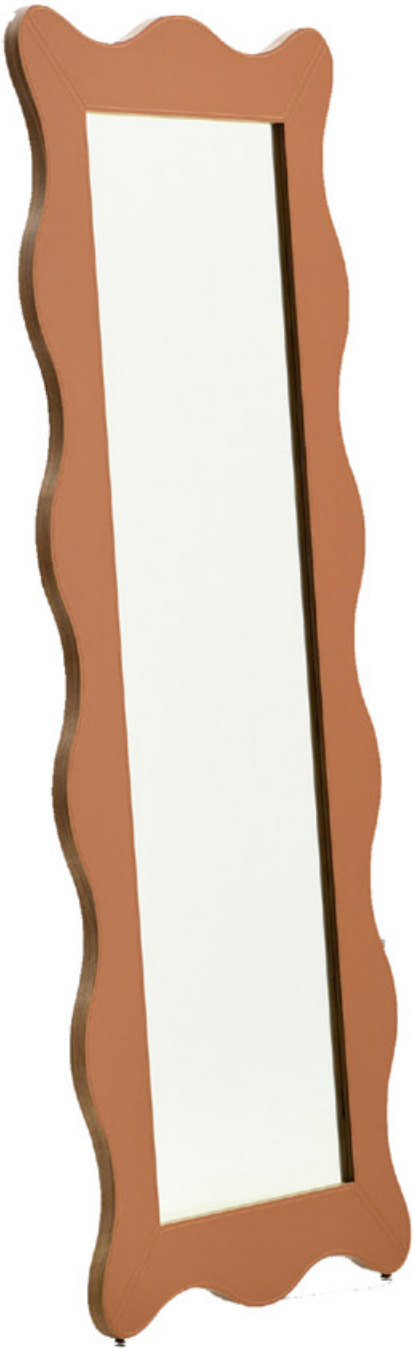
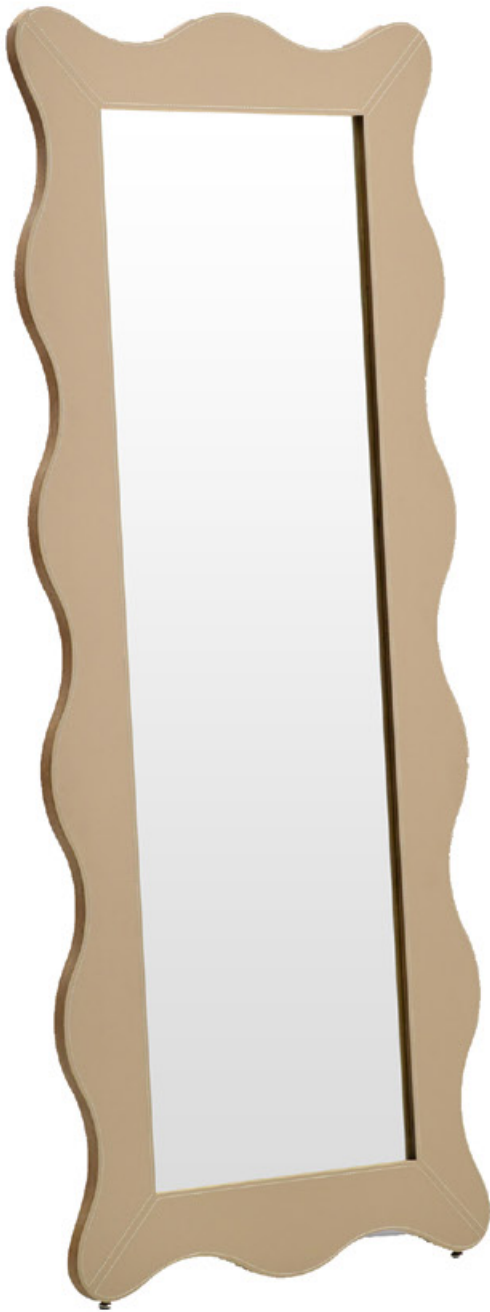






DF-6621





DF-8820

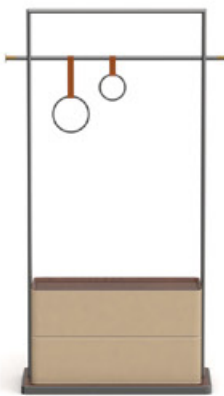




DF-2302



DF-2304



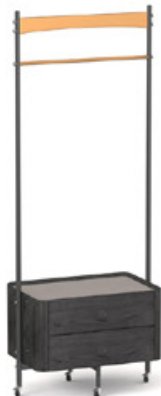
DF-2822



DF-5502



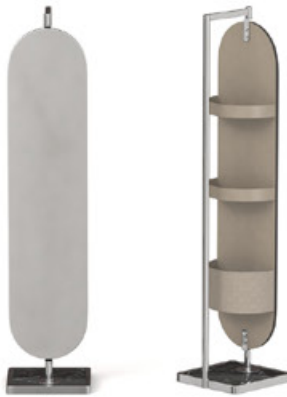
DF-5503A



DF-5503B



DF-5504



DF-6601A



DF-6601B



DF-6613



DF-6619



DF-6621



DF-8804



DF-8820



DF-8829





DD-1800



DD-2811



DX-8829



DD-2822



DD-8824A



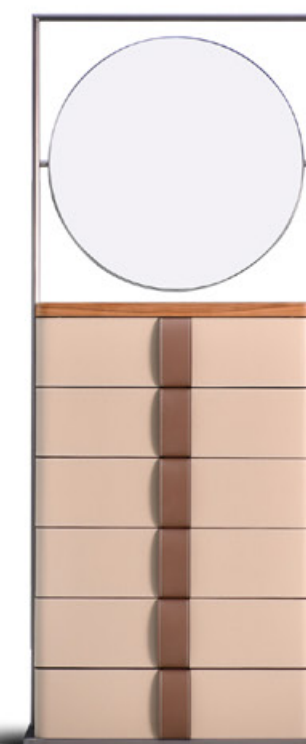
DD-8824B



DD-8824C



DD-8824D



DZ-8824





DD-8819



DD-8829



DH-2811



DQ-8824



DF-2822



DD-8816



DS-6617



DX-2822



DS-8818



DX-138



DX-8832



DX-8828





DL-6613



IN QUESTA PAGINA: COMODINO GENTLEMAN IN NOCE GOLD CON TOP IN LACCATO OPACO CHAMPAGNE, BASAMENTO CON PIEDINI CHAMPAGNE OPACO.

THIS PAGE: GENTLEMAN COFFEE TABLE IN GOLD WALNUT WITH TOP IN MAT LAC-QUER CHAMPAGNE, BASE WITH FEET IN MAT CHAMPAGNE.





DL-2301

IN QUESTA PAGINA: COMODINO GENTLEMAN IN NOCE GOLD CON TOP IN LACCATO OPACO CHAMPAGNE, BASAMENTO CON PIEDINI CHAMPAGNE OPACO.

THIS PAGE: GENTLEMAN COFFEE TABLE IN GOLD WALNUT WITH TOP IN MAT LAC-QUER CHAMPAGNE, BASE WITH FEET IN MAT CHAMPAGNE.





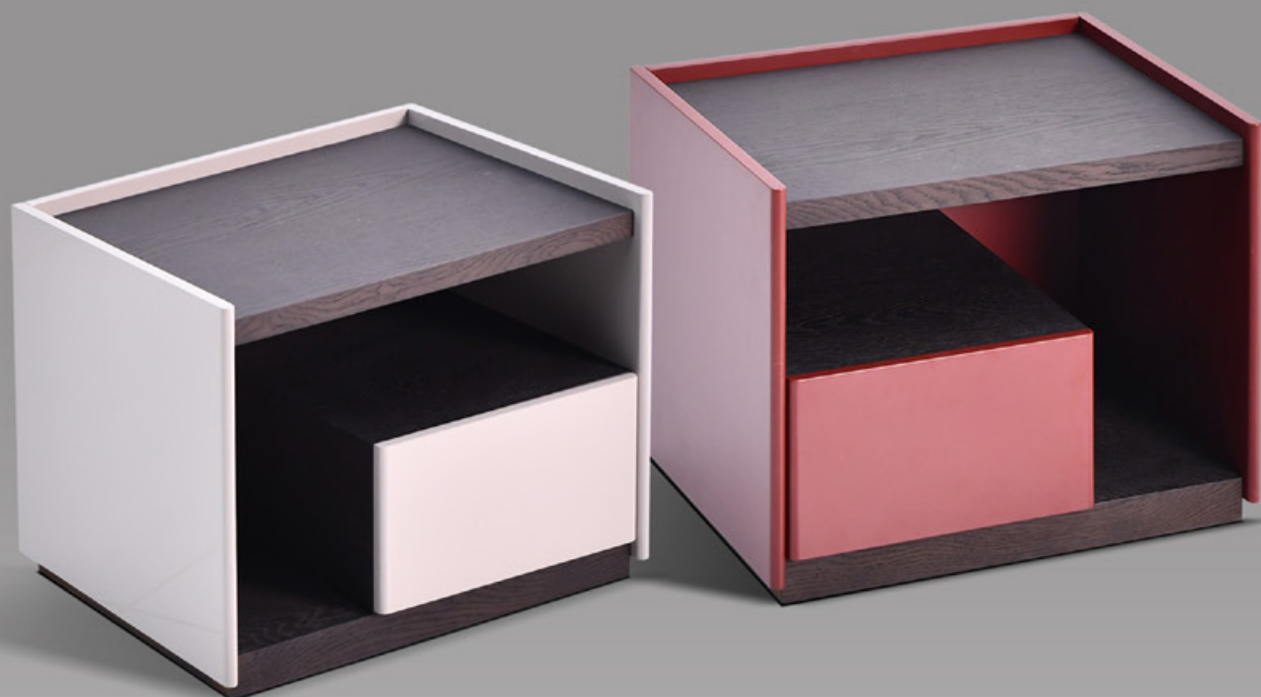
DL-8817 POLIFORM ONDA BEDSIDE TABLE

IN QUESTA PAGINA: COMODINO GENTLEMAN IN NOCE GOLD  
CON TOP IN LACCATOOPACO CHAMPAGNE,BASAMENTO CON  
PIEDINI CHAMPAGNE OPACO.

THIS PAGE: GENTLEMAN COFFEE TABLE IN GOLD WALNUT  
WITH TOP IN MAT LAC-QUERCHAMPAGNE,BASE WITH FEET  
IN MAT CHAMPAGNE.







DL-8831



IN QUESTA PAGINA: COMODINO GENTLEMAN IN NOCE GOLD CON TOP IN LACCATO OPACO CHAMPAGNE, BASAMENTO CON PIEDINI CHAMPAGNE OPACO.

THIS PAGE: GENTLEMAN COFFEE TABLE IN GOLD WALNUT WITH TOP IN MAT LAC-QUER CHAMPAGNE, BASE WITH FEET IN MAT CHAMPAGNE.





**DL-6614**

IN QUESTA PAGINA: COMODINO GENTLEMAN IN NOCE GOLD CON TOP IN LACCATO OPACO CHAMPAGNE, BASAMENTO CON PIEDINI CHAMPAGNE OPACO.

THIS PAGE: GENTLEMAN COFFEE TABLE IN GOLD WALNUT WITH TOP IN MAT LAC-QUER CHAMPAGNE, BASE WITH FEET IN MAT CHAMPAGNE.





DL-2301







CG-1168



DL-2304





DL-8827



DL-6601



DL9915



DL-9916



DL-8816



DL-8819



EC-N008



EC-N007





CG-1168



DL-2301



DL-6620



DL-2303



DL-2308



DL-2308



DL-8831



DL-8831



DL-2304L



DL-2304R



DL-6603B



DL-6613



DL-6615



DL-6616



DL-6617B



DL-6619





DL-6619-1



DL-6620



DL-8839



DL-8840



DL-8811



DL-8819



DL-8824



DL-8839



DL-8841



DL-8841-1



EC-N001



EC-N005



EC-N002



EC-N003



EC-N004



EC-N006





YVES DRESSING TABLE FROM BAXTER DESIGNED  
BY ROBERTO LAZZERONI



ITEN NO: DZ-8829    SIZE: 120\*60\*85.5CM

BAXTER YVES DESIGNED BY ROBERTO LAZZERONI IS A DRESSING TABLE, A DESK, A CONSOLE. THE IDEA BEHIND YVES IS TO CREATE A SIMPLE BUT MULTIFUNCTIONAL LINE, WITH SMALL DETAILS THE SAME PIECE OF FURNITURE TAKES ON THREE DIFFERENT IDENTITIES. THE STRUCTURE CAN BE CHOSEN IN SATIN-FINISH BRASS-PLATED METAL, HAND-BRUSHED BURNISHED METAL, OR SATIN NICKEL-PLATED METAL. THE STRUCTURE OF THE CABINET IS IN MDF COMPLETELY COVERED IN LEATHER.

THE DRESSING TABLE IS CHARACTERIZED BY A FLAP TOP WITH AN OVAL MIRROR, THE INTERNAL STRUCTURE OF THE COMPARTMENTS IS IN SHEET METAL COVERED IN LEATHER. THE DESK STANDS OUT FOR THE DRAWERS IN INDIA ROSEWOOD WITH A MATT FINISH AND SMALL DECORATIVE DETAILS IN METAL. THE CONSOLE, INSTEAD, HAS ONLY ONE LACQUERED DRAWER COMPARTMENT.







DZ-8804



DZ-8810





DZ-2966





DZ-140





DZ-8831



DZ-5502A



DZ-140



DZ-8810B



EC-S009



DZ-2966



DZ-2305



EC-T001



EC-T002



DZ-5503



DZ-5502B



DZ-8803



DZ-8805

ERC-HI 而驰 AISUN





DG-138



DG-2888

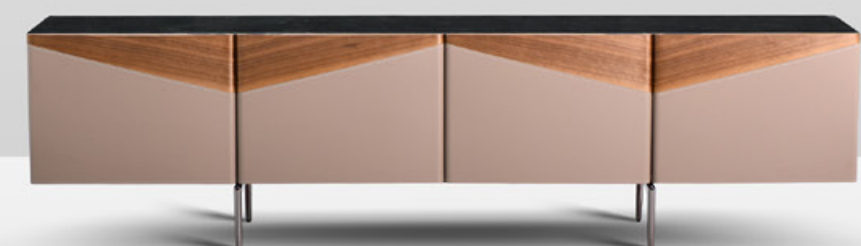






## 天然大理石地柜

VSTEC-TV-1168-220



TV-1168



DZ-138





EC-S004

DESK

FASHIONABLE & MINIMALIST.2024

FASHIONABLE & MINIMALIST.2024



DZ-8820

ERCHI 而驰 AISUN





DZ-8817

ERCHI 而馳 AISUN

DESK

FASHIONABLE & MINIMALIST.2024



FASHIONABLE & MINIMALIST.2024



DZ-8818

ERCHI 而馳 AISUN













DZ-6619

ERC- 而 馳 AISUN



DZ-6614



DZ-5503

ERCHI 而驰 AISUN