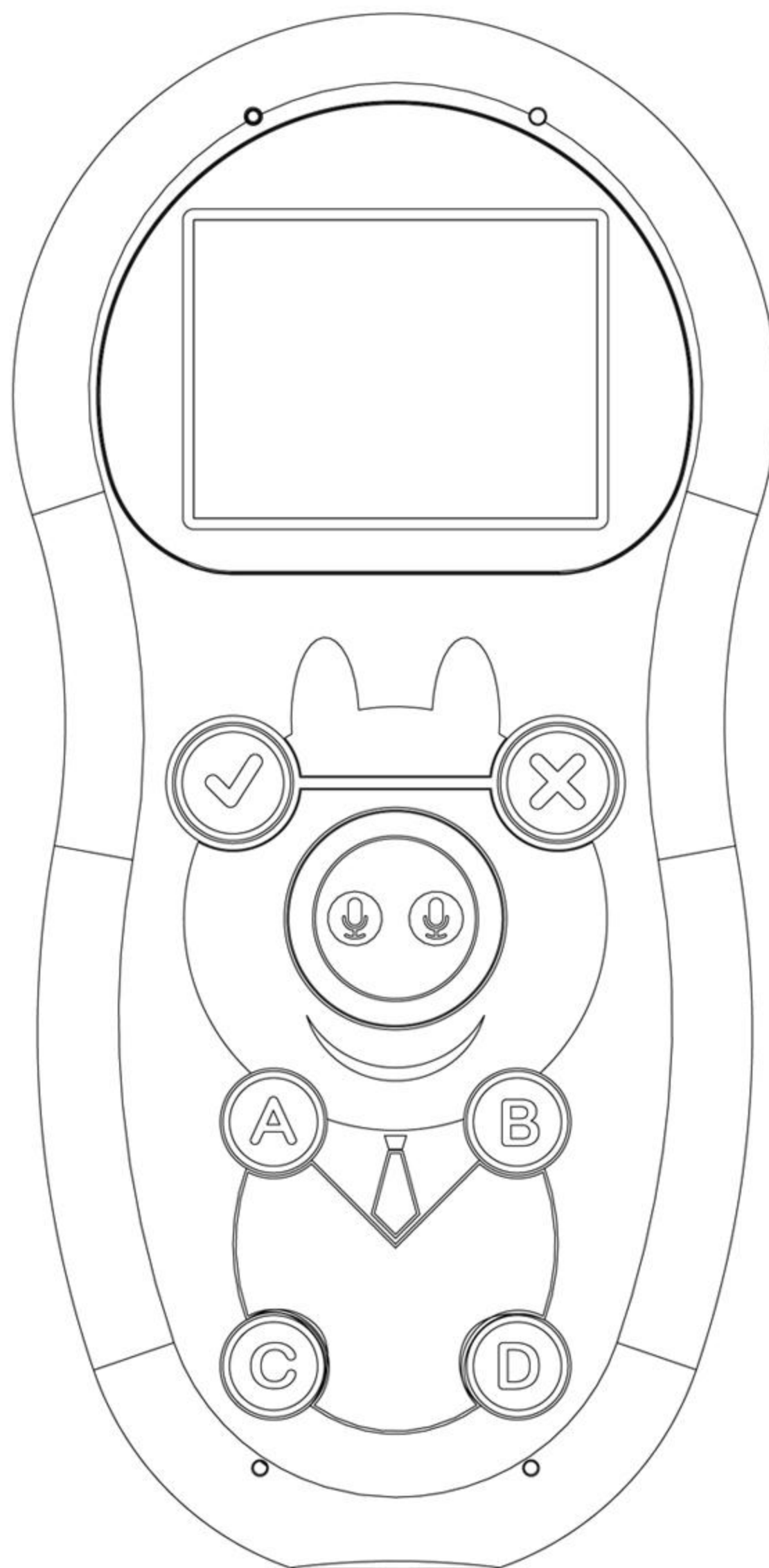
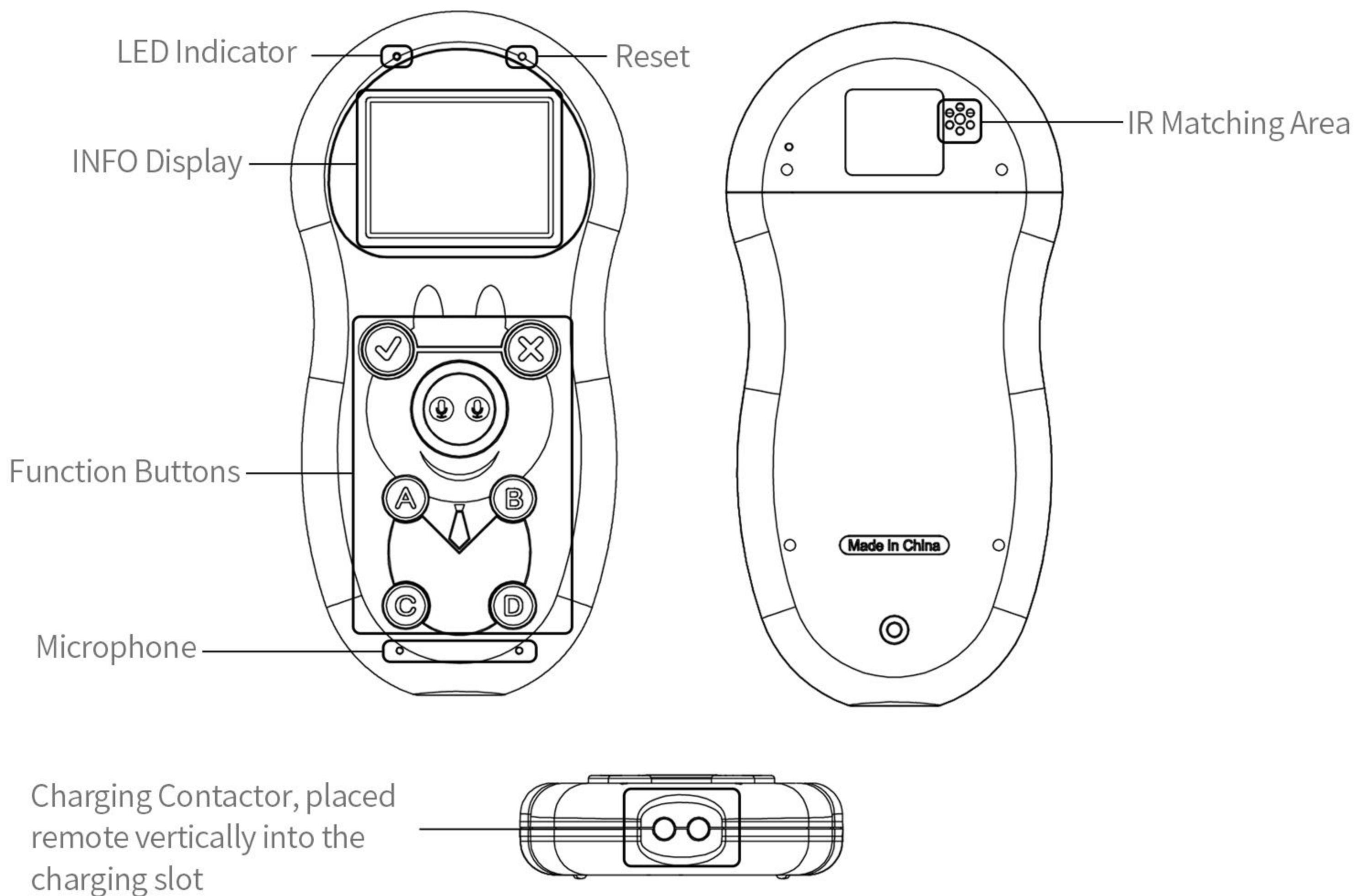


QRF997 User Manual

(15 charging slots)



► Remote Introduction



1.LED seven color indicator:

- a.Red light flicker: search host
- b.Red light on always: charging
- c.White light on: disconnect with host or plug the charging stop
- d.Green light flicker: data transmission
- e.Blue light on: re-connected

2.Black-and-White LED screen and Buttons Function

- a.Line one: Shows signal, device No. And battery
- b.Line two: Shows Answer detail, like question model, choice etc.
- c.Line three: Shows student name

3.Buttons function

- a.True or False, “√” , “×”
- b.Single choice: Directly press “A” , “B” , “C” , “D” .
- c.Multiple choices: Press “A” , “B” , “C” , “D” then press “√” to submit
- d.Audio button for roll call, red packet rush and audio transmission
- e.Audio test: Long press audio button to record invoice, release to submit.

4.Press “D” + “Audio button” then release them simultaneously to show version and enter Matching mode

5.Microphone

Input invoice

6.Buzzer

Build in

7.Vibrating motor

Build in

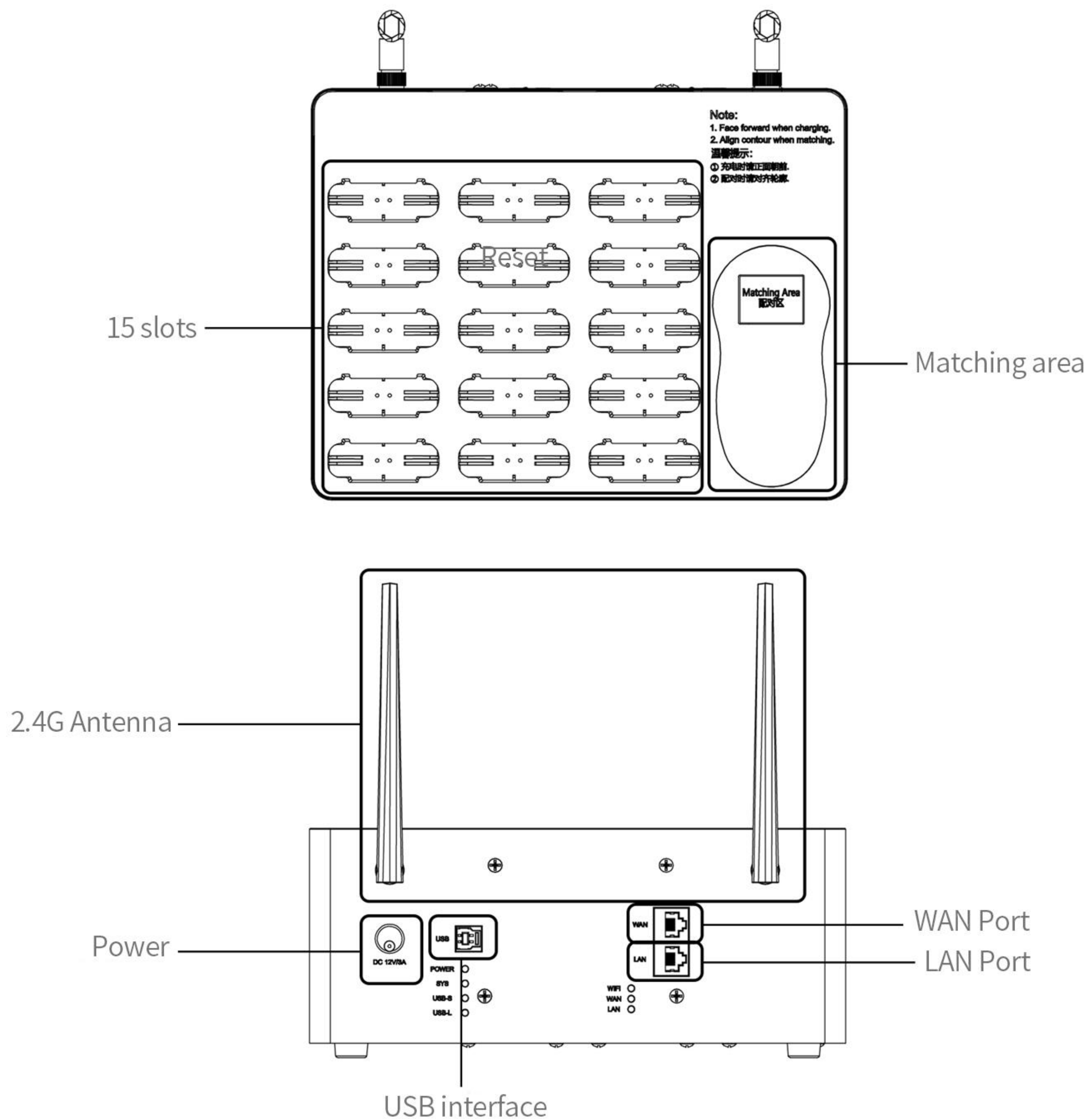
8.IR Matching Area

When the remote enter the matching mode, put the IR matching area near Host

9.Charging contactor

Placed remote vertically into the charging slot, the contactor will be plugged into remote

► Charging slot introduction



1.Charging Slot

15 remotes can be charging at the same time

2.Matching Area

Remote and Host can be matched in this area

3.Host

Two 2.4G antennas, 4 indicators, below are the introduction of indicator:

a.Power Indicator

On---power is supplying

Off---no power supply

b.WiFi Indicator: Shows connecting status between Host and remote

On---connect successfully

Off---connect failed, in this status the remote control could transmit data to Host

c.USB-S: Shows Connect status between computer and Host

On---Connect successfully between computer and Host

Off---Connect failed between computer and Host

Flicker---InTransmitting data between computer and Host

d.USB-L: Shows working status

On--- Work normally

Off---Connect failed with computer, or network fault

4.USB port

Connect PC USB port

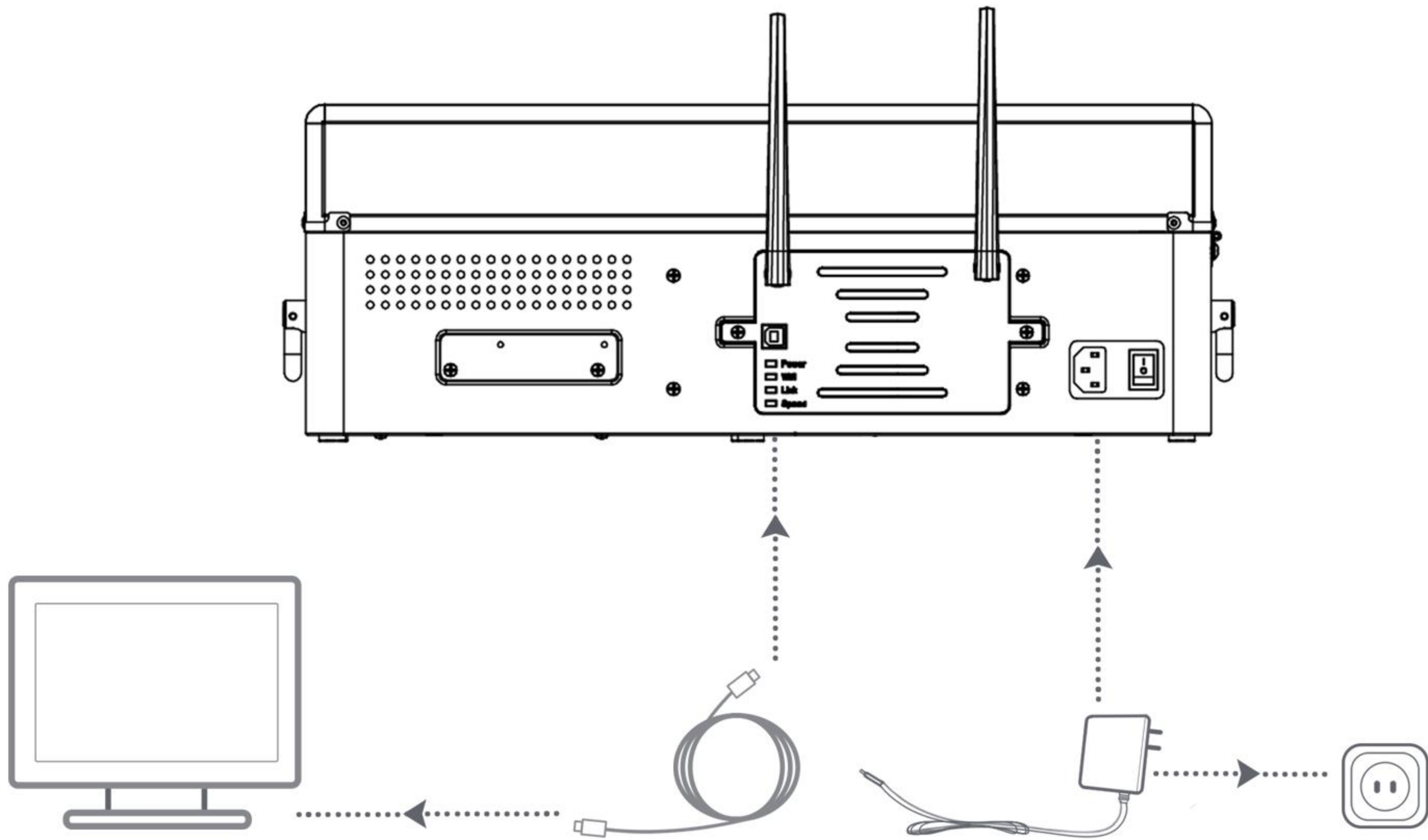
5.WAN and LAN Port

To connect external net and internal net

6.Power Button

Connect power for charging slot

► Remote connection (windows)

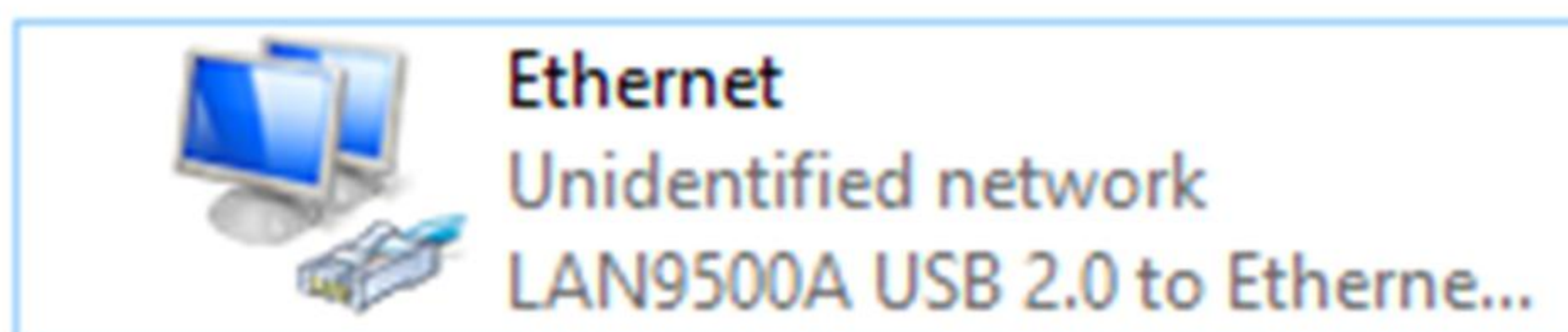


1.Charging slot power on

Plug cable into socket, turn on the power. The indicator will be on. Wait for initialization for 1 minute, it will begin working.

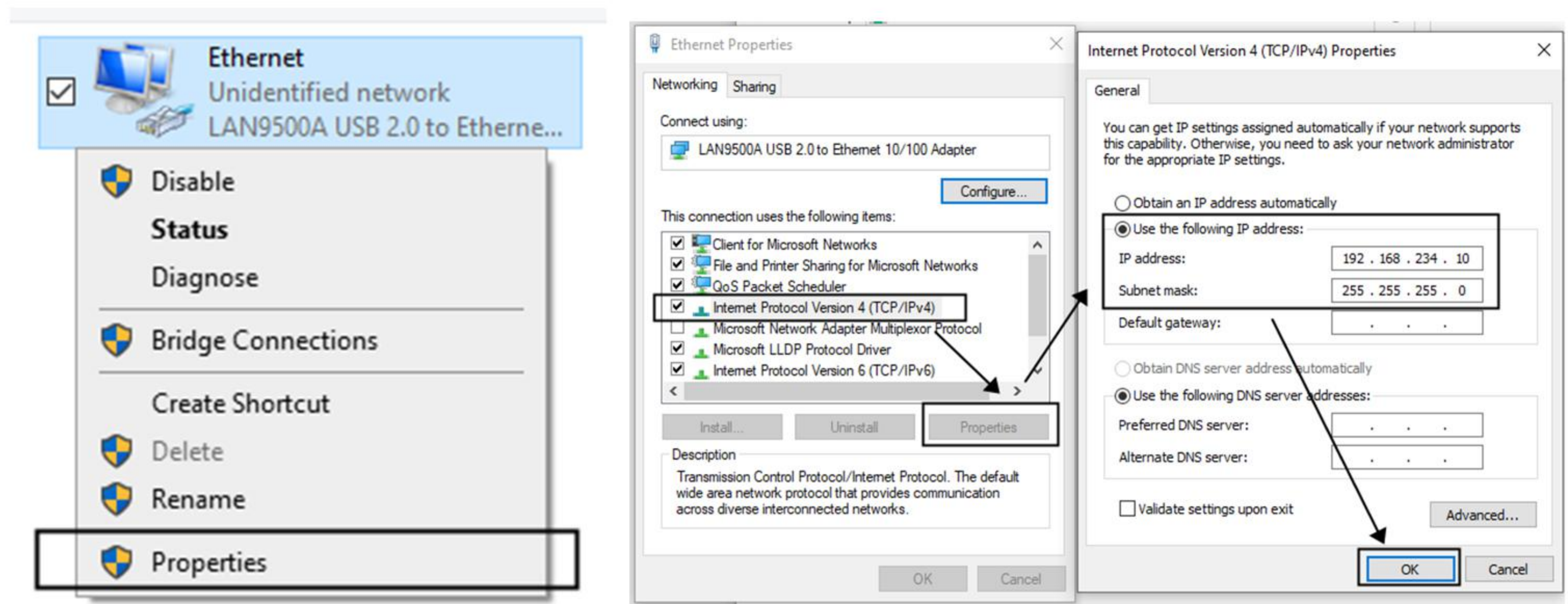
2.Host connection

Connect Host with USB cable then “LAN9500A” network will appear on the network page. (Note: Please contact support or download the driver from QOMO Website if you are failed to install it automatically.)



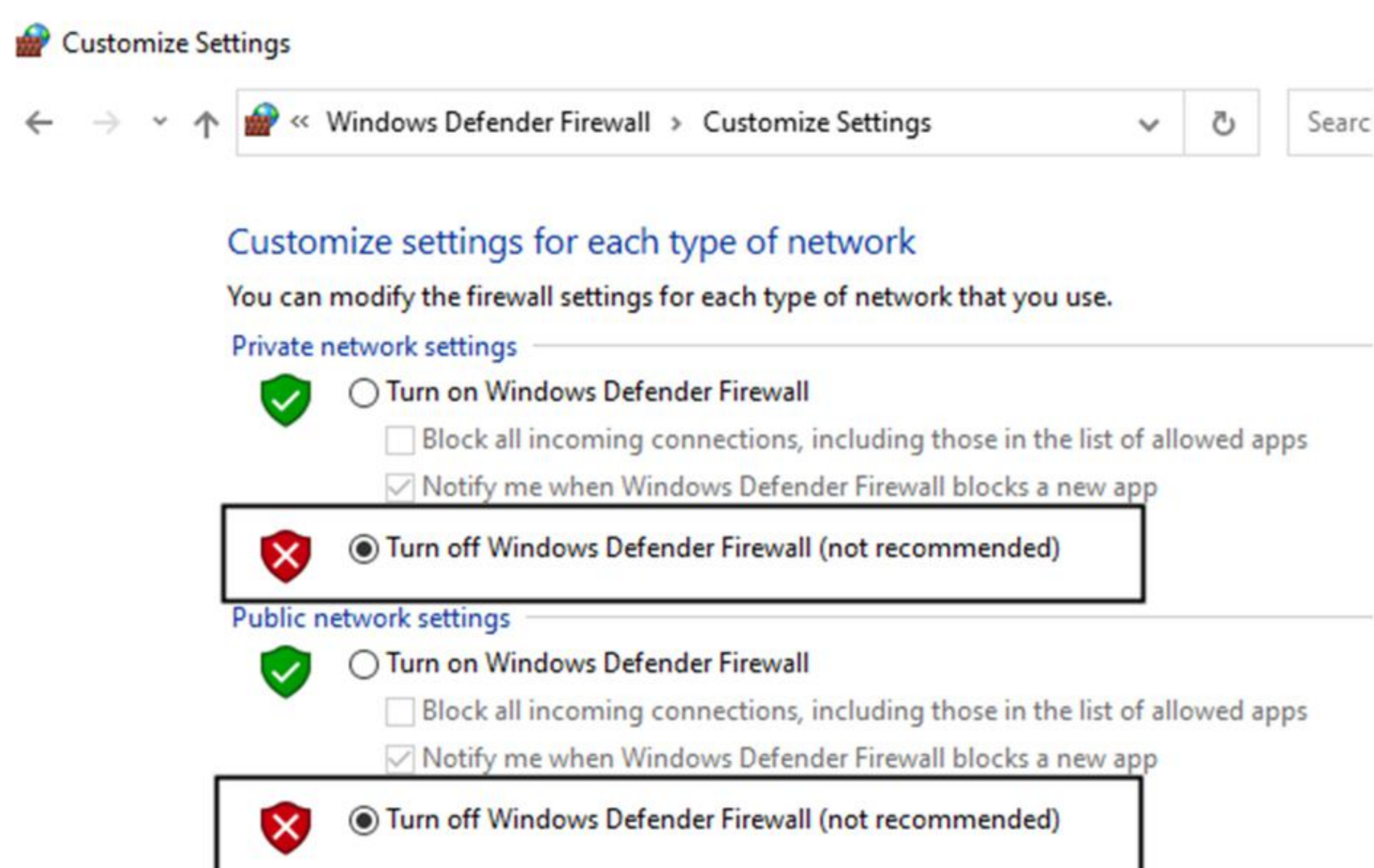
3. “LAN9500A” Network Configuration:

a. Go to Control Panel---Set LAN9500A IP Address to be: 192.168.234.10. Leave the gateway blank (Note: Only in the first time to use the ARS you need setting the IP).

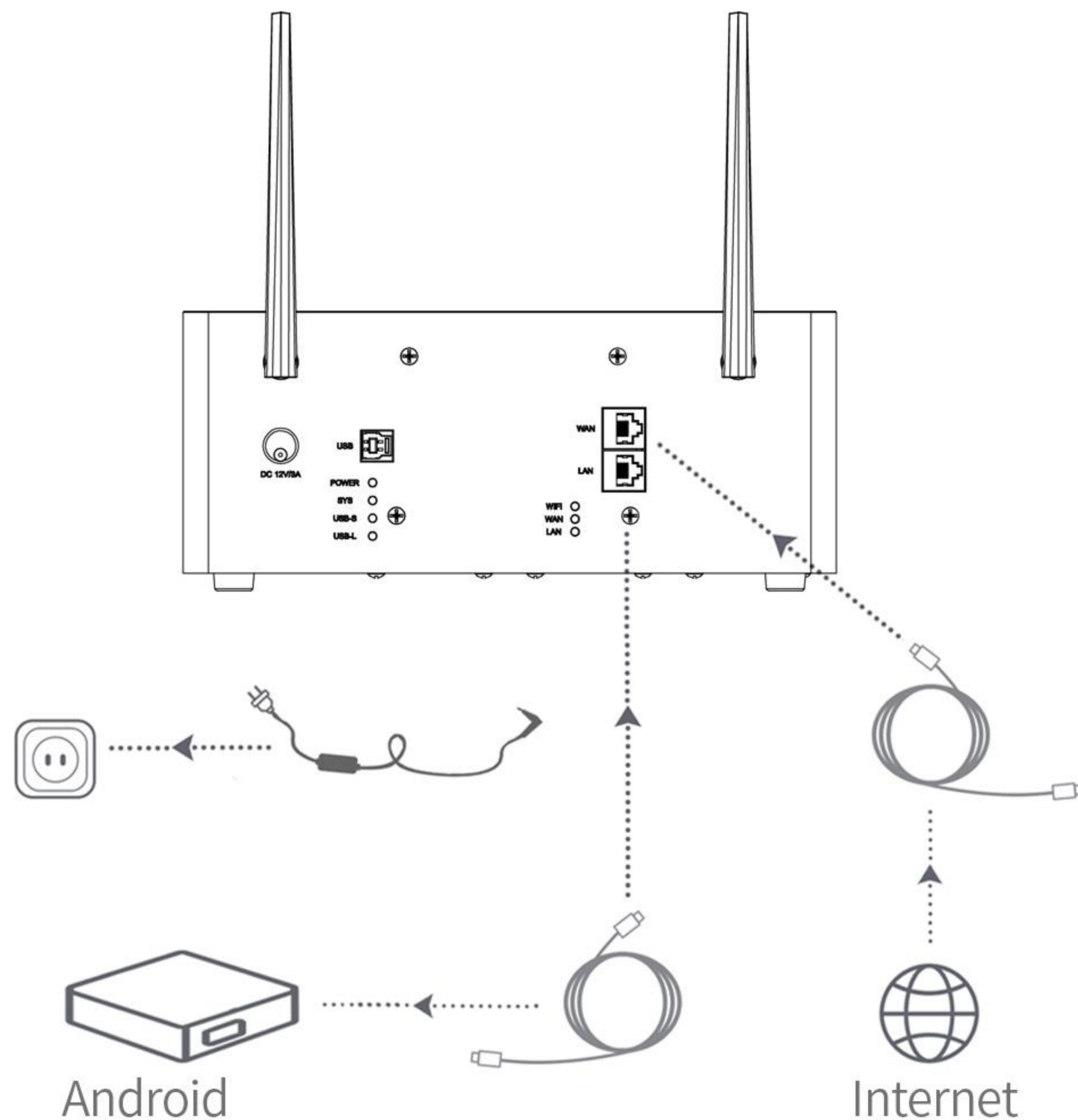


b. Close defender

Go to Control Panel---System and Safe---Close the Windows Defender. Then open the software.



► Remote Connection (Android)



1.Charging slot power on

Plug cable into socket, turn on the power. The indicator will be on.
Wait for initialization for 1 minute, it will begin working.

2.Android device connection

- a.Connect Android device to LAN port of Host with net cable
- b.External net cable connect LAN port

Note: Android device IP should be automatic IP acquisition

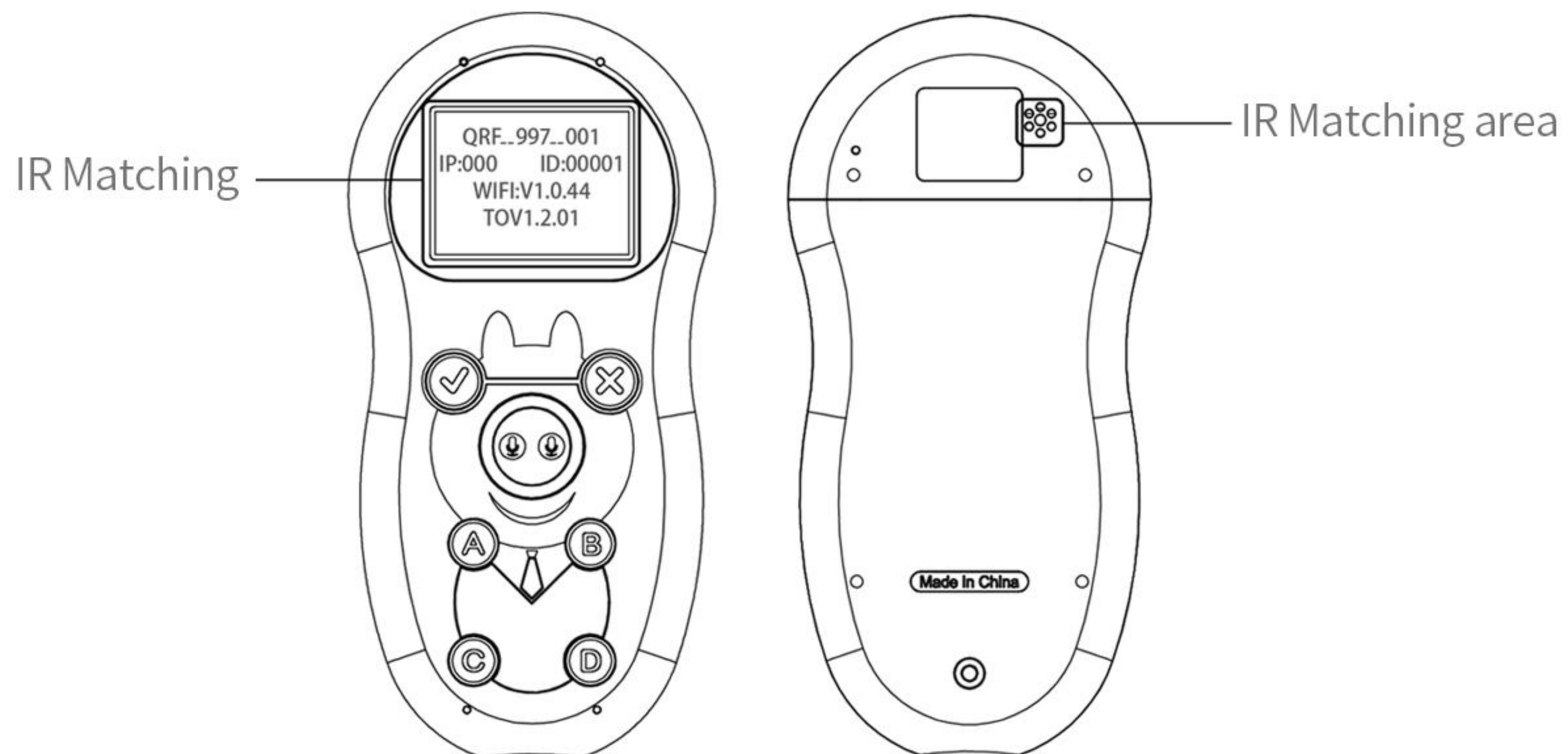
3.Host connection

Open software to connect Host

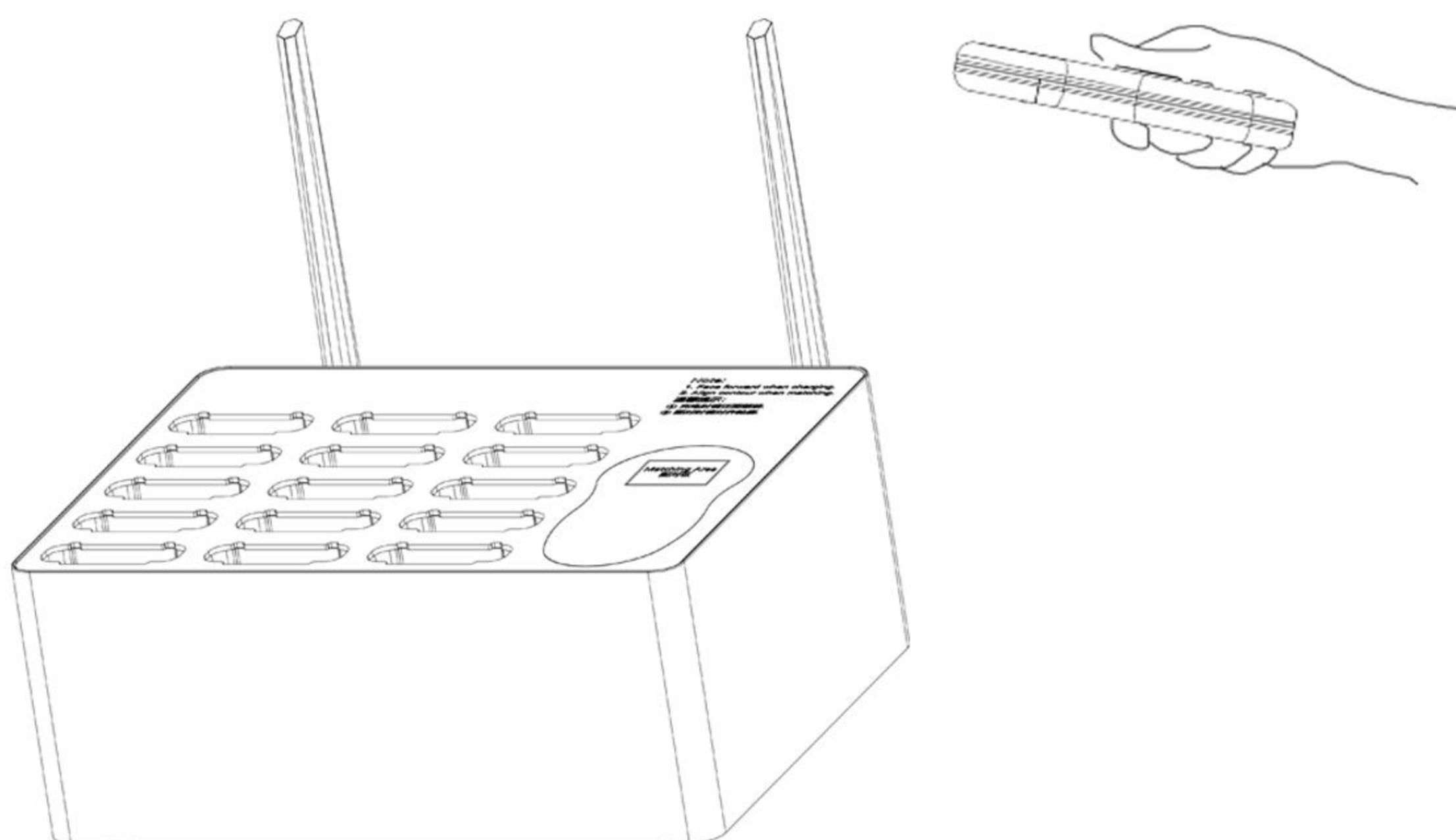
► Remotes Matching

*Note: The remotes were matched before leaving factory

1.Press “D” +” Audio button” then release them, version info will be displayed and it will enter matching mode as well.



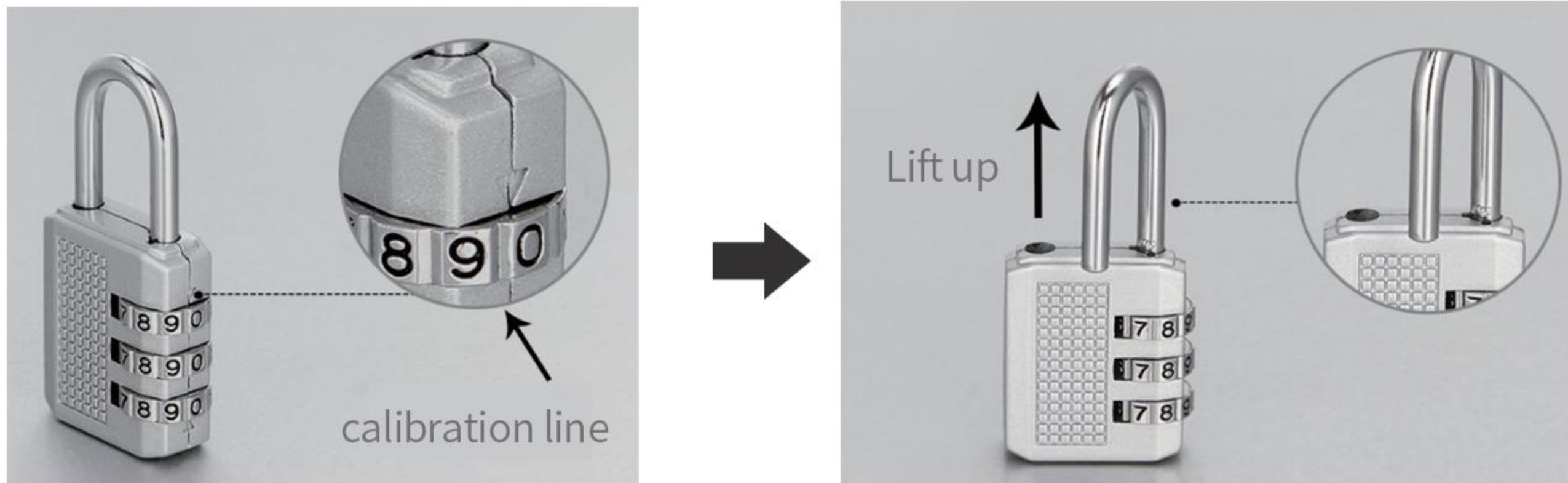
2.When student remotes enter into matching interface, face button-area down on Host matching area. It matches successfully if there' s a beep sound.



► Charging Slot Lock

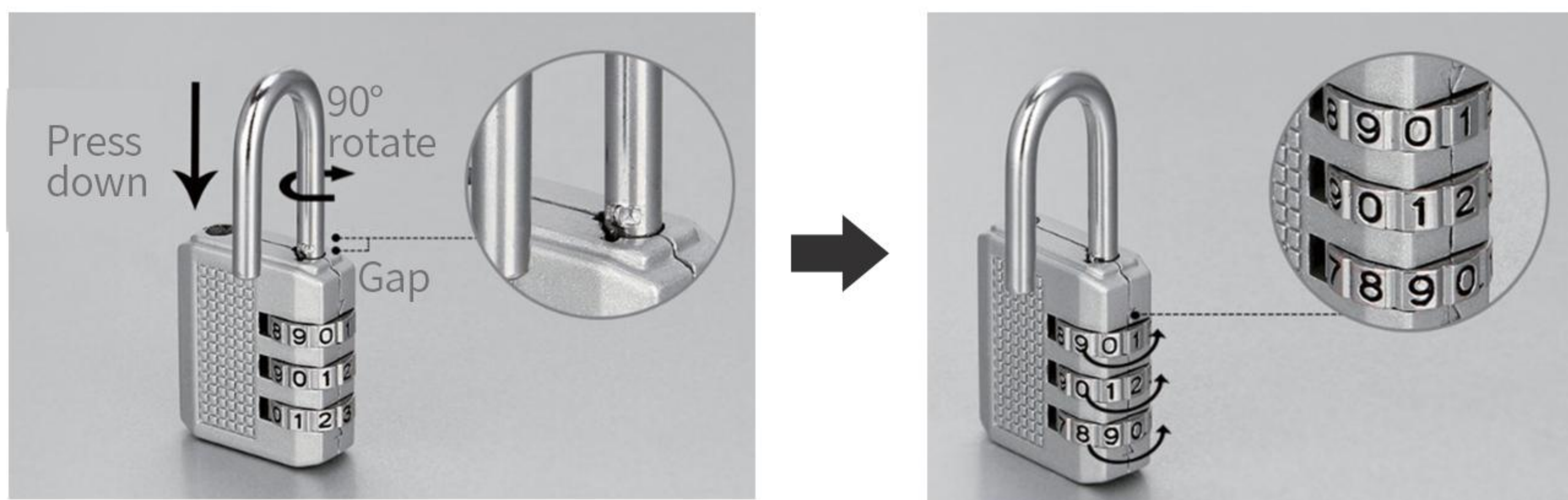
1. Open method

- The original password is 0-0-0, Align the password to the calibration line and lift the lock hook up, it will be unlocked



2. Setting password

- Open the lock, counter-clockwise the hook by 90°
- Press the tooth into the gap, keep pressing
- Turn the password number you want to align the calibration line
- Release the hook, password will be set successfully



► NOTIFICATION

- Don't disassemble, squeeze the lithium battery
- Don't drop or strike in case damaging the PCB
- Don't handle liquids near or the unit
- Use the unit in the temperature of -20°C~ 60°C environment
- Keep unit dry, don't wash it with Chemicals, detergents or liquids
- The best receiving distance is 20 m from remote to Host
- Keep the surface of charging contactor clean
- Turn off the unit if long time no use
- Don't cover the vents when charging