



www.mijiled.com



PRODUCT BROCHURE

JIANGXI MIJI ELECTRONICS AND TECHNOLOGY CO.,LTD

One-Station LED Power Supply Supplier



RoHS

Order now

www.mijiled.en.alibaba.com

INTRODUCTION

Jiangxi MIJI Electronics and Technology Co., Ltd was established in 2005, focusing on LED power supply industry for more than 18 years. MIJI has a wide range of products, our products have been widely used in signage, commercial lighting and decorative lighting, etc. Underlying the mass manufacturing of products are our workshops, which in total cover an area of 20,000m² and include 9 production lines for different product series. All units will have 100% online burn-in test before shipping out. We always adhere to the business philosophy of "making quality products and creating brand value".



Factory overview



SMT high technology room



Engineer R&D room



Aging test room



Monthly Capacity
260000 pcs



Company Team
400+ people



Factory Area
20000 m²

**The global
recruitment agents!**

CONTENTS

1 Waterproof LED Driver

DM High End Ip68	03
FSA Cost Effective IP67	04

2 Rainproof LED Driver

HS Semi-potted High Quality	05
MJ Classical Rainproof	06
JT Cost Effective Rainproof	07

3 Indoor LED Driver

KS 5V Display Screen Driver	08
SS Mesh Type Standard Power Supply	09
LRS Slim Indoor Standard Series	10
TLG Full Load Series	11
TCX High End Series	13
TLD Cost Effective Series	14
DX Slim Lighting Box Series	15
CB Super Slim 18mm 18W-72W	16

4 LED Module

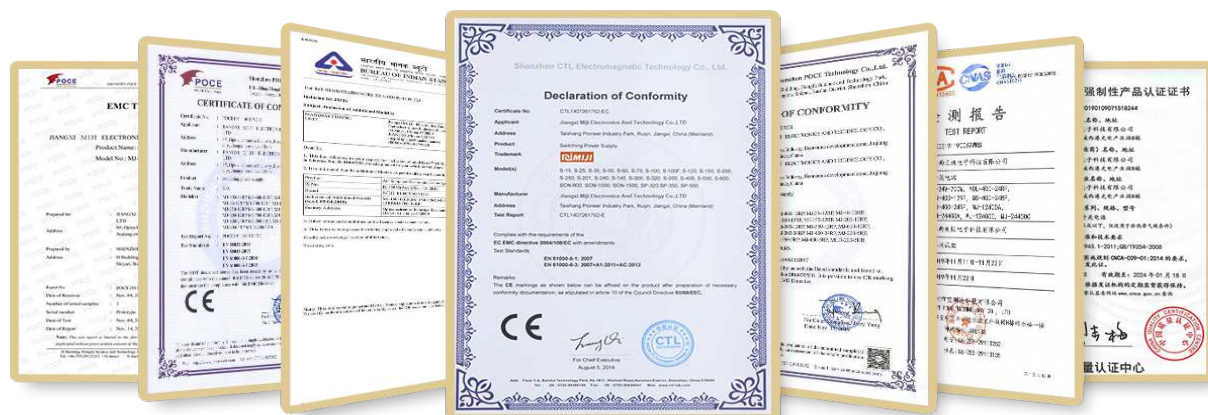
18-22

5 LED S strip

23-24

6 LED Rigid Bar

25-26



DM HIGH END WATERPROOF SERIES IP68

12V/24V 36W-400W



*Outdoor LED Lighting, Underwater Lighting, Marine and Dock Lighting, Swimming Pools and Fountains, Parking Lots and Building Exteriors

FEATURE

- ◎ Wide Temperature Range, Sealed Housing
- ◎ High efficiency above 90%
- ◎ 5Years warranty. Durability in Harsh Conditions
- ◎ IP68 design for indoor and outdoor use
- ◎ All 100% aging test and full load
- ◎ Protection over voltage, over current, short

PRODUCT PARAMETERS

CE FC CQC SAA RoHS

Model	Pout	Vin	Vout	Iout	Effi	IP	Size(mm)	Weight(g)	Cooling
DM-36-12	36W	200-240V AC	DC12V/24V	3.0A/1.5A	93%	IP68	126*41*27	217g	Natural Cooling
DM-60-12	60W	200-240V AC	DC12V/24V	5.0A/2.5A	93%	IP68	143*49*31	255g	Natural Cooling
DM-100-12	100W	200-240V AC	DC12V/24V	8.3A/4.1A	93%	IP68	164*53*31	505g	Natural Cooling
DM-150-12	150W	200-240V AC	DC12V/24V	12.5A/6.25A	93%	IP68	176*57*34	898g	Natural Cooling
DM-200-12	200W	200-240V AC	DC12V/24V	16.7A/8.33A	92%	IP68	186*60*36	982g	Natural Cooling
DM-300-12	300W	200-240V AC	DC12V/24V	25.0A/12.5A	90%	IP68	200*67*36	1085g	Natural Cooling
DM-400-12	400W	200-240V AC	DC12V/24V	33.3A/16.7A	90%	IP68	230*67*36	1110g	Natural Cooling

Order now
www.mijiled.en.alibaba.com

FSA WATERPROOF SERIES IP67

12V/24V 60W-600W



*Outdoor LED Lighting,
LED Signage and Billboards,
Parking Lots and Building Exteriors,

FEATURE

- ◎ Wide Temperature Range, Sealed Housing
- ◎ High efficiency above 86%
- ◎ 2Years warranty. Durability in Harsh Conditions
- ◎ IP67 design for indoor and outdoor use
- ◎ All 100% aging test and full load
- ◎ Protection over voltage, over current, short

PRODUCT PARAMETERS

CE FC CQC SAA RoHS

Model	Pout	Vin	Vout	Iout	Effi	IP	Size(mm)	Weight(g)	Cooling
FSA-60-12	60W	200-240V AC	DC12V/24V	5.0A/2.5A	89%	IP67	162*45*21	255g	Natural Cooling
FSA-100-12	100W	200-240V AC	DC12V/24V	8.3A/1.1A	89%	IP67	180*65*35	505g	Natural Cooling
FSA-150-12	150W	200-240V AC	DC12V/24V	12.5A/6.25A	89%	IP67	213*75*42	898g	Natural Cooling
FSA-200-12	200W	200-240V AC	DC12V/24V	16.7A/8.33A	89%	IP67	230*75*42	982g	Natural Cooling
FSA-300-12	300W	200-240V AC	DC12V/24V	25.0A/12.5A	86%	IP67	245*75*42	1085g	Natural Cooling
FSA-400-12	400W	200-240V AC	DC12V/24V	33.3A/16.7A	86%	IP67	260*75*42	1110g	Natural Cooling
FSA-500-12	500W	200-240V AC	DC12V/24V	41.7A/20.8A	86%	IP67	260*90*45	1643g	Natural Cooling
FSA-600-12	600W	200-240V AC	DC12V/24V	50.0A/25.0A	86%	IP67	260*125*51	1726g	Natural Cooling

Order now
www.mijiled.en.alibaba.com

HS SEMI-POTTED RAINPROOF

12V 100W-700W



*Outdoor LED Lighting, Building LED lighting
LED Signage and Displays,
Street and Pathway Lighting,

FEATURE

- ◎ 2 years warranty
- ◎ 100% full load burn-in test
- ◎ LED indicator for power on
- ◎ Protections: Short circuit / Overload / Over voltage
- ◎ Efficient Heat Dissipation, long life and high reliability
- ◎ Semi-Potted Construction, Dust and Debris Resistance

PRODUCT PARAMETERS

CE FC CQC SAA RoHS

Model	Pout	Vin	Vout	Iout	Effi	IP	Size(mm)	Cooling
HS-100-12	100W	AC200-240V	DC12V	8.3A	93%	IP65	135*92*48	Natural Cooling
HS-200-12	200W	AC200-240V	DC12V	16.7A	93%	IP65	155*92*48	Fan Cooling
HS-300-12	300W	AC200-240V	DC12V	25.0A	92%	IP65	175*92*48	Fan Cooling
HS-400-12B	400W	AC200-240V	DC12V	33.3A	86%	IP65	193*110*46	Fan Cooling
HS-400-12A	400W	AC200-240V	DC12V	33.3A	92%	IP65	205*115*46	Fan Cooling
HS-500-12	500W	AC200-240V	DC12V	41.7A	90%	IP65	205*115*46	Fan Cooling
HS-600-12	600W	AC200-240V	DC12V	50.0A	90%	IP65	212*118*52	Fan Cooling
HS-700-12	700W	AC200-240V	DC12V	58.0A	90%	IP65	212*118*52	Fan Cooling
HS-300-5	300W	AC200-240V	DC5V	60.0A	93%	IP65	193*110*46	Fan Cooling
HS-350-5	350W	AC200-240V	DC5V	70.0A	92%	IP65	205*115*46	Fan Cooling
HS-400-5	400W	AC200-240V	DC5V	80.0A	90%	IP65	212*118*52	Fan Cooling

Order now
www.mijiled.en.alibaba.com

MJ CLASSICAL RAINPROOF

12V/24V 60W-1000W



*Outdoor LED Lighting, Building LED lighting
LED Signage and Displays,
Street and Pathway Lighting,

FEATURE

- ◎ 100% full load, 100% aging test
- ◎ Quality aluminum shell with oxidation gold finish
- ◎ Good quantity can customize shell color and LOGO
- ◎ Intelligent chip control, over voltage, over current, short
- ◎ All 100% new component, long life and high reliability
- ◎ High speed and quality Fan cooling, with good dissipation and reliable

PRODUCT PARAMETERS

CE FC CQC SAA RoHS

Model	Size/mm	Pcs/Ctn	Vin	Frequency	Vout	Iout	Pout	Shell	Weight	Cooling
MJ-60-12	145*76*46	90	AC200-240V	47-63Hz	DC12V	5.0A	60W	Alluminum	289.2g	Natural Cooling
MJ-100-12	174*76*46	70	AC200-240V	47-63Hz	DC12V	8.3A	100W	Alluminum	327.2g	Natural Cooling
MJ-150-12	195*76*46	60	AC200-240V	47-63Hz	DC12V	12.5A	150W	Alluminum	385.0g	Natural Cooling
MJ-200-12	195*76*46	60	AC200-240V	47-63Hz	DC12V	16.5A	200W	Alluminum	414.2g	Fan Cooling
MJ-300-12	178*99*55	40	AC200-240V	47-63Hz	DC12V	25.0A	300W	Alluminum	581.0g	Fan Cooling
MJ-400-12E	182*120*56	40	AC200-240V	47-63Hz	DC12V	33.0A	400W	Alluminum	450.0g	Fan Cooling
MJ-400-12C	182*120*56	40	AC200-240V	47-63Hz	DC12V	33.0A	400W	Alluminum	595.0g	Fan Cooling
MJ-400-12A	205*120*56	30	AC200-240V	47-63Hz	DC12V	33.0A	400W	Alluminum	705.8g	Fan Cooling
MJ-500-12	227*120*56	30	AC200-240V	47-63Hz	DC12V	41.7A	500W	Alluminum	865.0g	Fan Cooling
MJ-600-12	227*120*56	30	AC200-240V	47-63Hz	DC12V	50.0A	600W	Alluminum	865.0g	Fan Cooling
MJ-700-12	237*120*56	30	AC200-240V	47-63Hz	DC12V	58.3A	700W	Alluminum	925.0g	Fan Cooling

Order now
www.mijiled.en.alibaba.com

JT COST EFFECTIVE RAINPROOF

12V 60W-1000W



*Outdoor LED Lighting, Building LED lighting
LED Signage and Displays,
Street and Pathway Lighting,

FEATURE

- ◎ 100% full load, 100% aging test
- ◎ Quality aluminum shell with oxidation gold finish
- ◎ Good quantity can customize shell color and LOGO
- ◎ Intelligent chip control, over voltage, over current, short
- ◎ All 100% new component, long life and high reliability
- ◎ High speed and quality Fan cooling, with good dissipation and reliable

PRODUCT PARAMETERS

CE FC CQC SAA RoHS

Model	Pout	Vin	Vout	Iout	Effi	IP	Size(mm)	Pcs/Ctn
JT-60-12	60W	200-240V AC	12V	5A	93%	IP43	130*74*42	100
JT-100-12	100W	200-240V AC	12V	8.3A	93%	Ip43	148*74*42	100
JT-150-12	150W	200-240V AC	12V	12.5A	93%	IP43	148*74*42	100
JT-200-12	200W	200-240V AC	12V	16.7A	92%	IP43	195*74*42	80
JT-300-12	300W	200-240V AC	12V	25.0A	92%	IP43	182*93*50	50
JT-400-12F	400W	200-240V AC	12V	33.3A	80%	IP43	182*118*50	48
JT-400-12E	400W	200-240V AC	12V	33.3A	80%	IP43	182*118*50	48
JT-400-12C	400W	200-240V AC	12V	33.3A	92%	IP43	182*118*50	48
JT-500-12	500W	200-240V AC	12V	41.7A	90%	IP43	205*118*50	30
JT-600-12	600W	200-240V AC	12V	50.0A	90%	IP43	220*118*50	30
JT-700-12	700W	200-240V AC	12V	58.3A	90%	Ip43	220*118*50	30

Order now
www.mijiled.en.alibaba.com

KS 5V DISPLAY SCREEN DRIVER

5V 100W- 300W



* LED Signage and Displays,
LED Pixel lighting,
LED video wall, LED Module

FEATURE

- ◎ Input voltage range: AC 200-240V and 110-240V
- ◎ Stable Output Voltage, Low Ripple and Noise
- ◎ Can use for indoor outdoor display screen
- ◎ Ultra thin and slim design, easy install for different kind place
- ◎ Intelligent chip control, over voltage, over current, short
- ◎ All 100% new component, aging test and full load

PRODUCT PARAMETERS

CE FC CQC SAA RoHS

Model	Pout	Vin	Vout	Iout	Effi	IP	Size(mm)	Pcs/Ctn
KS-100-5HA	100W	200-240V AC	DC5V	20A	93%	IP20	180*50*23	90
KS-200-5HA	200W	200-240V AC	DC5V	40A	93%	IP20	199*81*30	40
KS-200-5HB	200W	200-240V AC	DC5V	40A	93%	IP20	199*81*30	40
KS-200-5HC	200W	100-240V AC	DC5V	40A	93%	Ip20	199*81*30	40
KS-300-5HC	300W	200-240V AC	DC5V	60A	93%	IP20	220*81*30	40

Order now
www.mijiled.en.alibaba.com

SS MESH TYPE STANDARD POWER SUPPLY

12V/24V 25W- 600W



*Industrial Automation, LED Lighting,
Medical Equipment, Security Systems,
Consumer Electronics

FEATURE

- ◎ 100% full load, 100% aging test
- ◎ Wide Input Voltage Range, 100-240V AC Input
- ◎ Multiple Output Options, 5V 12V 24V 36V
- ◎ Compact Design, mesh type aluminum shell
- ◎ Low Ripple and Noise, Versatile Applications
- ◎ All 100% new component, long life and high reliability

PRODUCT PARAMETERS

CE FC CQC SAA RoHS

Model	Pout	Vin	Vout	Iout	Effi	IP	Size(mm)	Pcs/Ctn
SS-25-12	25W	100-240V AC	DC12V/24V	2.0A/1.0A	93%	IP20	85*59*33	200
SS-36-12	36W	100-240V AC	DC12V/24V	3.0A/1.5A	93%	IP20	85*59*33	200
SS-60-12	60W	100-240V AC	DC12V/24V	5.0A/2.5A	93%	IP20	110*78*36	60
SS-120-12	120W	100-240V AC	DC12V/24V	10.0A/5.0A	93%	IP20	159*98*42	60
SS-180-12	180W	100-240V AC	DC12V/24V	15.0A/7.5A	93%	IP20	198*98*42	50
SS-250-12	250W	100-240V AC	DC12V/24V	20.8A/10.0A	93%	IP20	200*109*50	36
SS-360-12	360W	100-240V AC	DC12V/24V	30.0A/15.0A	93%	IP20	200*109*50	36
SS-500-12	500W	100-240V AC	DC12V/24V	41.7A/20.0A	93%	IP20	214*114*50	36
SS-600-12	600W	100-240V AC	DC12V/24V	50.0A/25.0A	93%	IP20	245*120*65	21

Order now
www.mijiled.en.alibaba.com

LRS SLIM INDOOR STANDARD

12V/24V 35W- 350W



*Industrial Automation, LED Lighting,
Medical Equipment, Security Systems,
Consumer Electronics

FEATURE

- ◎ 100% full load, 100% aging test
- ◎ Wide Input Voltage Range, 100-240V AC Input
- ◎ Multiple Output Options, 5V 12V 24V 36V
- ◎ Ultra Compact Design, mesh type aluminum shell
- ◎ Low Ripple and Noise, Versatile Applications
- ◎ All 100% new component, long life and high reliability

PRODUCT PARAMETERS

CE FC CQC SAA RoHS

Model	Pout	Vin	Vout	Iout	Effi	IP	Size(mm)	Pcs/Ctn
LRS-35-12	35W	100-240V AC	DC12V/24V	2.9A/1.45A	93%	IP20	99*82*30	45
LRS-50-12	50W	100-240V AC	DC12V/24V	4.16A/2.0A	93%	IP20	99*82*30	45
LRS-75-12	75W	100-240V AC	DC12V/24V	6.25A/3.1A	93%	Ip20	99*97*30	45
LRS-100-12	100W	100-240V AC	DC12V/24V	8.3A/4.1A	93%	IP20	129*98*30	60
LRS-150-12	150W	100-240V AC	DC12V/24V	12.5A/6.25A	93%	IP20	159*98*30	36
LRS-200-12	200W	100-240V AC	DC12V/24V	16.7A/8.3A	93%	IP20	215*115*30	22
LRS-350-12	350W	100-240V AC	DC12V/24V	29.1A/14.5A	93%	Ip20	215*115*30	22

Order now
www.mijiled.en.alibaba.com

TLG FULL LOAD SERIES

12V/24V 60W- 400W



*LED Strip Lights, Commercial Lighting,
Neon and Accent Lighting,
LED Signs and Lightboxes, Smart Home Lighting

FEATURE

- ◎ Two years warranty
- ◎ 100% Load burn-in test
- ◎ Built-in EMI filter
- ◎ Output over-voltage, over-current and short-circuit protection
- ◎ Ultra slim design, suitable narrow install
- ◎ Average no trouble working >20,000 hours
- ◎ Low output ripple and noise

PRODUCT PARAMETERS

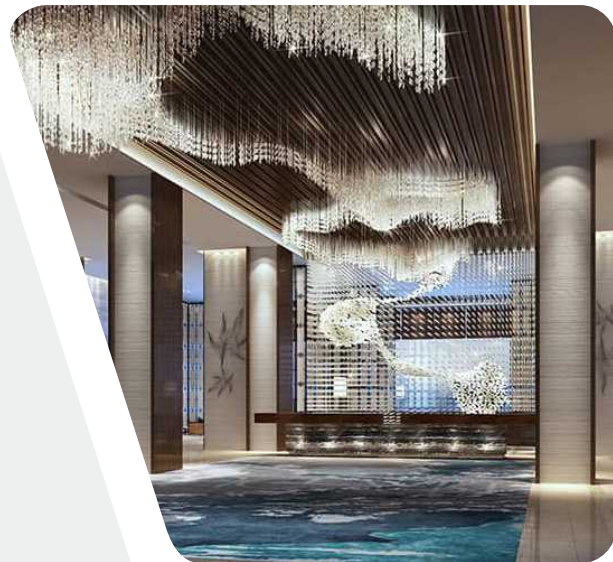
CE FC CQC SAA RoHS

Model	Pout	Vin	Vout	Iout	Effi	IP	Size(mm)	Pcs/Ctn
TLG-60-12	60W	200-240V AC	12V/24V	5.0A/2.5A	93%	IP20	141*50*29	80
TLG-100-12	100W	200-240V AC	12V/24V	8.3A/4.1A	93%	IP20	141*50*29	80
TLG-200-12	200W	200-240V AC	12V/24V	16.7A/8.3A	93%	IP20	180*50*29	60
TLG-300-12	300W	200-240V AC	12V/24V	25.0A/12.5A	93%	IP20	208*50*29	40
TLG-400-12	400W	200-240V AC	12V/24V	33.0A/16.7A	93%	IP20	208*50*29	40

Order now
www.mijiled.en.alibaba.com

TLE CLASSICAL QUALITY SERIES

12V/24V 60W- 400W



*LED Strip Lights, Commercial Lighting,
Neon and Accent Lighting,
LED Signs and Lightboxes, Smart Home Lighting

FEATURE

- ◎ Two years warranty
- ◎ 100% Load burn-in test
- ◎ Built-in EMI filter
- ◎ Output over-voltage, over-current and short-circuit protection
- ◎ Ultra slim design, suitable narrow install
- ◎ Average no trouble working >20,000 hours
- ◎ Low output ripple and noise

PRODUCT PARAMETERS

CE FC CQC SAA RoHS

Model	Pout	Vin	Vout	Iout	Effi	IP	Size(mm)	Pcs/Ctn
TLE-60-12	60W	200-240V AC	12V/24V	5.0A/2.5A	90%	IP20	120*36*22	120
TLE-100-12	100W	200-240V AC	12V/24V	8.3A/4.1A	90%	IP20	138*50*23	90
TLE-200-12	200W	200-240V AC	12V/24V	16.7A/8.3A	90%	IP20	180*50*23	90
TLE-300-12	300W	200-240V AC	12V/24V	25.0A/12.5A	90%	IP20	187*60*28	60
TLE-400-12	400W	200-240V AC	12V/24V	33.0A/16.7A	90%	IP20	220*60*28	60

Order now
www.mijiled.en.alibaba.com

TCX HIGH END SERIES

12V/24V 60W- 400W



*LED Strip Lights, Commercial Lighting,
Neon and Accent Lighting,
LED Signs and Lightboxes, Smart Home Lighting

FEATURE

- ◎ Two years warranty
- ◎ 100% Load burn-in test
- ◎ Built-in EMI filter
- ◎ Output over-voltage, over-current and short-circuit protection
- ◎ Ultra slim design, suitable narrow install
- ◎ Low output ripple and noise
- ◎ Average no trouble working >20,000 hours

PRODUCT PARAMETERS

CE FC CQC SAA RoHS

Model	Pout	Vin	Vout	Iout	Effi	IP	Size(mm)	Pcs/Ctn
TCX-60-12	60W	200-240V AC	DC12V/24V	5.0A/2.5A	93%	IP20	115*48*28	100
TCX-100-12	100W	200-240V AC	DC12V/24V	8.3A/4.1A	93%	IP20	144*48*28	90
TCX-200-12	200W	200-240V AC	DC12V/24V	16.7A/8.3A	93%	IP20	184*48*28	90
TCX-300-12	300W	200-240V AC	DC12V/24V	25.0A/12.5A	93%	IP20	191*58*30	60
TCX-400-12	400W	200-240V AC	DC12V/24V	33.0A/16.7A	93%	IP20	225*58*30	60

Order now
www.mijiled.en.alibaba.com

TLD COST EFFECTIVE

12V/24V 60W- 400W



*LED Strip Lights, Commercial Lighting,
Neon and Accent Lighting,
LED Signs and Lightboxes, Smart Home Lighting

FEATURE

- ◎ Two years warranty
- ◎ 100% Load burn-in test
- ◎ Built-in EMI filter
- ◎ Output over-voltage, over-current and short-circuit protection
- ◎ Ultra slim design, suitable narrow install
- ◎ Low output ripple and noise
- ◎ Average no trouble working >20,000 hours

PRODUCT PARAMETERS

CE FC CQC SAA RoHS

Model	Pout	Vin	Vout	Iout	Effi	IP	Size(mm)	Pcs/Ctn
TLD-60-12	60W	200-240V AC	DC12V/24V	5.0A/2.5A	85%	IP20	120*36*22	100
TLD-100-12	100W	200-240V AC	DC12V/24V	8.3A/4.1A	85%	IP20	138*50*23	90
TLD-200-12	200W	200-240V AC	DC12V/24V	16.7A/8.3A	85%	IP20	180*50*23	90
TLD-300-12	300W	200-240V AC	DC12V/24V	25.0A/12.5A	85%	IP20	206*50*23	60
TLD-400-12	400W	200-240V AC	DC12V/24V	33.0A/16.7A	85%	IP20	238*50*23	60

Order now
www.mijiled.en.alibaba.com

DX SLIM LIGHTING BOX SERIES

12V/24V 60W- 400W



*LED Strip Lights, Commercial Lighting, Neon and Accent Lighting, LED Signs and Lightboxes, Smart Home Lighting

FEATURE

- ◎ Two years warranty
- ◎ 100% Load burn-in test
- ◎ Built-in EMI filter
- ◎ Output over-voltage, over-current and short-circuit protection
- ◎ Ultra slim design, suitable narrow install
- ◎ Low output ripple and noise
- ◎ Average no trouble working >20,000 hours

PRODUCT PARAMETERS

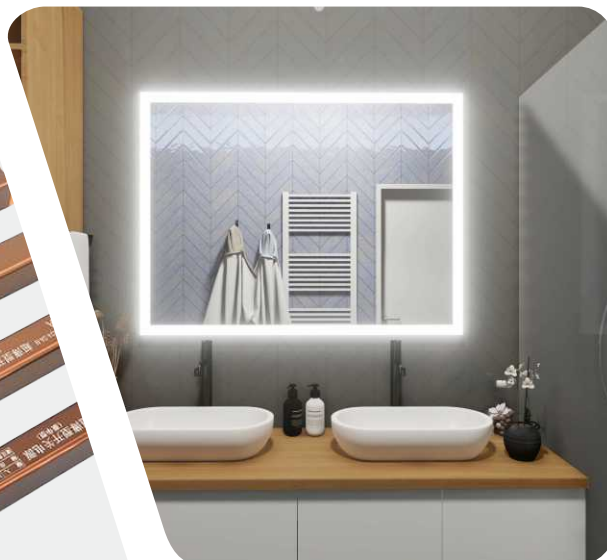
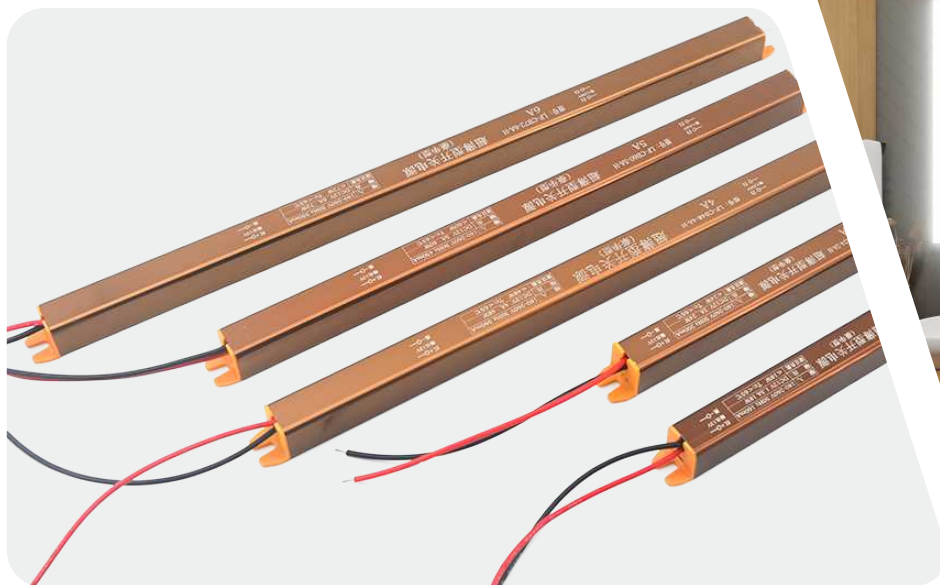
CE FC CQC SAA RoHS

Model	Pout	Vin	Vout	Iout	Effi	IP	Size(mm)	Pcs/Ctn
DX-60-12	60W	200-240V AC	DC12V/24V	5.0A/2.5A	89%	IP20	148*53*21	85
DX-100-12	100W	200-240V AC	DC12V/24V	8.3A/4.1A	89%	IP20	172*53*21	85
DX-150-12	150W	200-240V AC	DC12V/24V	12.5A/6.25A	85%	IP20	234*53*18	78
DX-200-12	200W	200-240V AC	DC12V/24V	16.7A/8.3A	85%	IP20	313*53*21	60
DX-300-12 FAN	300W	200-240V AC	DC12V/24V	25.0A/12.5A	85%	IP20	313*53*21	60
DX-400-12 FAN	400W	200-240V AC	DC12V/24V	33.0A/16.7A	85%	IP20	313*53*21	60

Order now
www.mijiled.en.alibaba.com

CB SUPER SLIM 18MM

12V/24V 18W- 72W



*Ultra-Thin LED Lightboxes, Slim Linear Lighting, LED Smart Bathroom Mirrors, Furniture Lighting, Under-Stair or Floor Lighting

FEATURE

- ◎ Ultra-Slim Profile, 18*18mm
- ◎ High grade components & high quality
- ◎ Overload and Short-Circuit Protection
- ◎ Ultra high efficiency & High performance price ratio
- ◎ High Efficiency, Low Ripple and Noise
- ◎ Can use for Mirror LED light with touch control

PRODUCT PARAMETERS

CE FC CQC SAA RoHS

Model	Pout	Vin	Vout	Iout	Effi	IP	Size(mm)	Pcs/Ctn
CB-18-12	18W	200-240V AC	DC12V/24V	1.5A/0.75A	93%	IP20	172*18*18	200
CB-24-12	24W	200-240V AC	DC12V/24V	2.0A/1.0A	93%	IP20	172*18*18	200
CB-36-12	36W	200-240V AC	DC12V/24V	3.0A/1.5A	93%	IP20	283*18*18	100
CB-48-12	48W	200-240V AC	DC12V/24V	4.0A/2.0A	93%	IP20	313*18*18	100
CB-60-12	60W	200-240V AC	DC12V/24V	5.0A/2.5A	93%	IP20	313*18*18	100
CB-72-12	72W	200-240V AC	DC12V/24V	6.0A/3.0A	93%	IP20	313*18*18	100

Order now
www.mijiled.en.alibaba.com

DXD CABINET ULTRA THIN

12V/24V 24W- 100W



*Wardrobe LED Lighting, Closet Lighting,
Under-Shelf Lighting, Showcase Lighting,
Mirror Lighting in Wardrobes

FEATURE

- ◎ Ultra-Slim Profile, 16mm thickness
- ◎ High grade components & high quality
- ◎ User-Friendly Connectors, Overload and Short-Circuit Protection
- ◎ Ultra high efficiency & High performance price ratio
- ◎ High Efficiency, Low Ripple and Noise

PRODUCT PARAMETERS

CE FC CQC SAA RoHS

Model	Pout	Vin	Vout	Iout	Effi	IP	Size(mm)	Pcs/Ctn
DXD-24-12	24W	200-240V AC	DC12V/24V	2.0A/1.0A	93%	IP20	120*60*16	90
DXD-36-12	36W	200-240V AC	DC12V/24V	3.0A/1.5 A	93%	IP20	150*60*16	90
DXD-60-12	60W	200-240V AC	DC12V/24V	5.0A/2.5 A	93%	IP20	180*60*16	60
DXD-100-12	100W	200-240V AC	DC12V/24V	8.3A/4.1A	93%	IP20	200*60*16	60

Order now
www.mijiled.en.alibaba.com

2607-2835

Product Parameters

Input Voltage	DC12V
Power	1.0W
Luminous Flux	120LM
Lifetime	2 YEARS
Dimension	L39xW13mm
Quantity/chain	20 modules/chain
Color	<input type="radio"/> <input type="radio"/> <input type="radio"/>



Product Features

- ◎ New excellent lens design to get much wider light spot (3:1 proportion), can save 55% module quantity and labor cost in application.
- ◎ Can be used for ultra-thin Light box and channel letter (Min, thickness 30mm) .
- ◎ Ip65 waterproof.
- ◎ 20 modules per chain.



3010-2835

Product Parameters

Input Voltage	DC12V
Power	1.5W
Luminous Flux	75LM
Lifetime	2 YEARS
Dimension	L30xW10mm
Quantity/chain	20 modules/chain
Color	<input type="radio"/> <input type="radio"/> <input type="radio"/>



Product Features

- ◎ New excellent lens design to get much wider light spot (3:1 proportion), can save 55% module quantity and labor cost in application.
- ◎ Can be used for ultra-thin Light box and channel letter (Min, thickness 30mm) .
- ◎ Ip68 waterproof.
- ◎ 20 modules per chain.



6013-2835

Product Parameters

Input Voltage	DC12V
Power	1.5W
Luminous Flux	120LM
Lifetime	2 YEARS
Dimension	L60xW13mm
Quantity/chain	20 modules/chain
Color	<input type="radio"/> <input type="radio"/> <input type="radio"/>



Product Features

- ◎ New excellent lens design to get much wider light spot (3:1 proportion), can save 55% module quantity and labor cost in application.
- ◎ Can be used for ultra-thin Light box and channel letter (Min, thickness 30mm).
- ◎ Ip65 waterproof.
- ◎ 20 modules per chain.



6113-2835

Product Parameters

Input Voltage	DC12V
Power	1.5W
Luminous Flux	120LM
Lifetime	2 YEARS
Dimension	L61xW13mm
Quantity/chain	20 modules/chain
Color	<input type="radio"/> <input type="radio"/> <input type="radio"/>



Product Features

- ◎ New excellent lens design to get much wider light spot (3:1 proportion), can save 55% module quantity and labor cost in application.
- ◎ Can be used for ultra-thin Light box and channel letter (Min, thickness 30mm).
- ◎ Ip65 waterproof.
- ◎ 20 modules per chain.



6212-2835

Product Parameters	
Input Voltage	DC12V
Power	1.5W
Luminous Flux	120LM
Lifetime	2 YEARS
Dimension	L62xW12mm
Quantity/chain	20 modules/chain
Color	<div> <div></div> <div></div> <div></div> </div>



Product Features

- ◎ New excellent lens design to get much wider light spot (3:1 proportion), can save 55% module quantity and labor cost in application.
- ◎ Can be used for ultra-thin Light box and channel letter (Min, thickness 30mm) .
- ◎ Ip68 waterproof.
- ◎ 20 modules per chain.



6214-2835

Product Parameters	
Input Voltage	DC12V
Power	1.5W
Luminous Flux	120LM
Lifetime	2 YEARS
Dimension	L62xW14mm
Quantity/chain	20 modules/chain
Color	<div> <div></div> <div></div> <div></div> </div>



Product Features

- ◎ New excellent lens design to get much wider light spot (3:1 proportion), can save 55% module quantity and labor cost in application.
- ◎ Can be used for ultra-thin Light box and channel letter (Min, thickness 30mm) .
- ◎ Ip68 waterproof.
- ◎ 20 modules per chain.



7015-2835

Product Parameters

Input Voltage	DC12V
Power	1.5W
Luminous Flux	120LM
Lifetime	2 YEARS
Dimension	L65xW13mm
Quantity/chain	20 modules/chain
Color	<input type="radio"/> <input type="radio"/> <input type="radio"/>



Product Features

- ◎ New excellent lens design to get much wider light spot (3:1 proportion), can save 55% module quantity and labor cost in application.
- ◎ Can be used for ultra-thin Light box and channel letter (Min, thickness 30mm).
- ◎ Ip65 waterproof.
- ◎ 20 modules per chain.



7215-2835

Product Parameters

Input Voltage	DC12V
Power	1.5W
Luminous Flux	180LM
Lifetime	2 YEARS
Dimension	L72xW15mm
Quantity/chain	20 modules/chain
Color	<input type="radio"/> <input type="radio"/> <input type="radio"/>



Product Features

- ◎ New excellent lens design to get much wider light spot (3:1 proportion), can save 55% module quantity and labor cost in application.
- ◎ Can be used for ultra-thin Light box and channel letter (Min, thickness 30mm).
- ◎ Ip65 waterproof.
- ◎ 20 modules per chain.



7517-5054

Product Parameters

Input Voltage	DC12V
Power	1.5W
Luminous Flux	150LM
Lifetime	2 YEARS
Dimension	L75xW17mm
Quantity/chain	20 modules/chain
Color	<input type="radio"/> Warm White <input type="radio"/> Cool White <input type="radio"/> RGB



Product Features

- ◎ New excellent lens design to get much wider light spot (3:1 proportion), can save 55% module quantity and labor cost in application.
- ◎ Can be used for ultra-thin Light box and channel letter (Min, thickness 30mm).
- ◎ Ip65 waterproof.
- ◎ 20 modules per chain.



8518-2835

Product Parameters

Input Voltage	AC110/220V
Power	2.0W
Luminous Flux	180LM
Lifetime	2 YEARS
Dimension	L85xW18mm
Quantity/chain	20 modules/chain
Color	<input type="radio"/> Warm White <input type="radio"/> Cool White <input type="radio"/> RGB



Product Features

- ◎ New excellent lens design to get much wider light spot (3:1 proportion), can save 55% module quantity and labor cost in application.
- ◎ Can be used for ultra-thin Light box and channel letter (Min, thickness 30mm).
- ◎ Ip65 waterproof.
- ◎ 20 modules per chain.



42 LED

Product Parameters

Input Voltage	DC12V
Power	8.6W/m
Luminous Flux	800LM
Lifetime	2 YEARS
Dimension	7mm
Package/roll	20Meter/roll
Color	<input type="radio"/> <input type="radio"/> <input type="radio"/>



Product Features

- ◎ The light Source Adopts High Quality 2835 Large size Chip, Pure Cooper Wire, High Brightness, Long Life, Low Attenuation.
- ◎ Using Thickened Copper Fpc Flexible Circuit Board, Good Flexibility, Higher Reliability.
- ◎ Under The Premise Of The Same Brightness, The Power Is Lower To Save Energy, Reduce The Power Cost About 50%.
- ◎ Large Size Chip With Low Current, Achieve High Brightness And Reduce The Temperature Of The Lamp Belt, Than The Conventional Lamp Belt In The Same Power With The Same Specification Parameters, The Temperature Is More Than 10°C Lower.



60 LED

Product Parameters

Input Voltage	DC12V
Power	6.0W/m
Luminous Flux	900LM
Lifetime	2 YEARS
Dimension	7mm
Package/roll	20Meter/roll
Color	<input type="radio"/> <input type="radio"/> <input type="radio"/>



Product Features

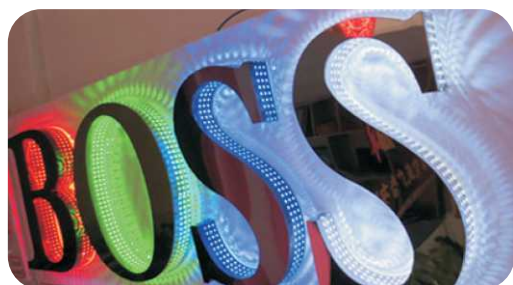
- ◎ The light Source Adopts High Quality 2835 Large size Chip, Pure Cooper Wire, High Brightness, Long Life, Low Attenuation.
- ◎ Using Thickened Copper Fpc Flexible Circuit Board, Good Flexibility, Higher Reliability.
- ◎ Under The Premise Of The Same Brightness, The Power Is Lower To Save Energy, Reduce The Power Cost About 50%.
- ◎ Large Size Chip With Low Current, Achieve High Brightness And Reduce The Temperature Of The Lamp Belt, Than The Conventional Lamp Belt In The Same Power With The Same Specification Parameters, The Temperature Is More Than 10°C Lower.



120 LED

Product Parameters

Input Voltage	DC12V
Power	8.0W/m
Luminous Flux	900LM
Lifetime	2 YEARS
Dimension	6.5mm
Package/roll	20Meter/roll
Color	<input type="radio"/> <input type="radio"/> <input type="radio"/>



Product Features

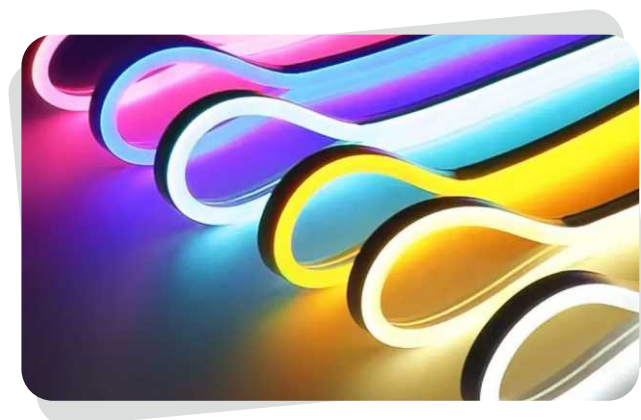
- ◎ The light Source Adopts High Quality 2835 Large size Chip, Pure Cooper Wire, High Brightness, Long Life, Low Attenuation.
- ◎ Using Thickened Copper Fpc Flexible Circuit Board, Good Flexibility, Higher Reliability.
- ◎ Under The Premise Of The Same Brightness, The Power Is Lower To Save Energy, Reduce The Power Cost About 50%.
- ◎ Large Size Chip With Low Current, Achieve High Brightness And Reduce The Temperature Of The Lamp Belt, Than The Conventional Lamp Belt In The Same Power With The Same Specification Parameters, The Temperature Is More Than 10°C Lower.



Neon strip

Product Parameters

Input Voltage	DC12V/24V
Power	10W/m
Protection level	Ip67
Lifetime	2 YEARS
Dimension	6x12mm/8x16mm
Package/roll	50Meter/roll
Color	<input type="radio"/> <input type="radio"/> <input type="radio"/>



Product Features

- ◎ The light Source Adopts High Quality 2835 Large size chip, Pure Cooper Wire, High Brightness, Long Life, Low Attenuation.
- ◎ Flame Retardant silicone Material, Safe Low Pressure, High And Low Temperature Resistance, Acid And Alkali Corrosion Resistance, Yellowing Resistance, Fast Heat Dissipation.
- ◎ Rich Color, Can Do Monochrome And Full Color Conversion, Soft And Uniform Luminous, High light Transmittance, No spot Dark Area integrated Extrusion Molding Process, Lamp Body Flexibility Is Excellent, Easy To Use All Kinds Of Odd Positions Flexibly Food Grade Silicon Calibration Material, Environmental Protection And Tasteless, Can Be Widely Used In Home Decoration Safely.
- ◎ Ip68 Protection Grade, Suitable For Outdoor Use.
- ◎ Can Be Cut, Supporting Installation Card Slot, Easy And Flexible Installation.



Quality Engineering

Product Parameters

Input Voltage	DC12V/24V
Power	12W
Luminous Flux	1100/1200LM
Lifetime	2 YEARS
Dimension	920x15x1mm
Package	2000pcs/ctn
Color	<input type="radio"/> Yellow <input type="radio"/> White <input type="radio"/> RGB



Product Features

- ◎ Heat resistant led strip light, select and use high luminous and long life SMD2835 led chip, high brightness, wide angle, low decay and good consistency.
- ◎ It's cheapest cost for light box ,just need 3-5pcs in 1square meter.
- ◎ DC12V low working voltage, security and stability .
- ◎ Automatic SMT machines and soldering machines, advanced equipment
- ◎ Easy for installation, widely used in all kinds of decorative place.



Waterproof Outdoor

Product Parameters

Input Voltage	DC12V
Power	14.4W
Luminous Flux	1200LM
Lifetime	2 YEARS
Dimension	950x18x1mm
Package	2000pcs/ctn
Color	<input type="radio"/> Yellow <input type="radio"/> White <input type="radio"/> RGB



Product Features

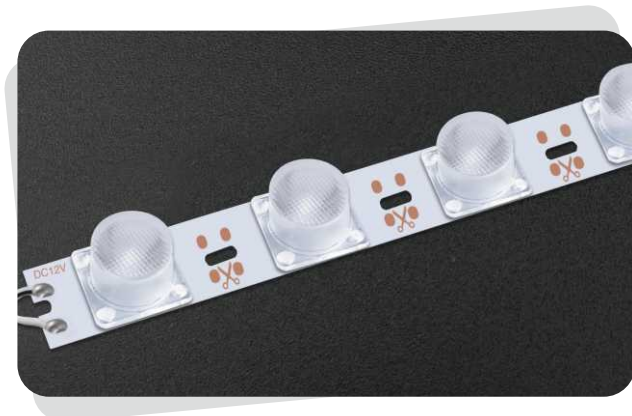
- ◎ Heat resistant led strip light, select and use high luminous and long life SMD2835 led chip, high brightness, wide angle, low decay and good consistency.
- ◎ It's cheapest cost for light box ,just need 3-5pcs in 1square meter.
- ◎ DC12V low working voltage, security and stability .
- ◎ Automatic SMT machines and soldering machines, advanced equipment
- ◎ Easy for installation, widely used in all kinds of decorative place.



Side Light

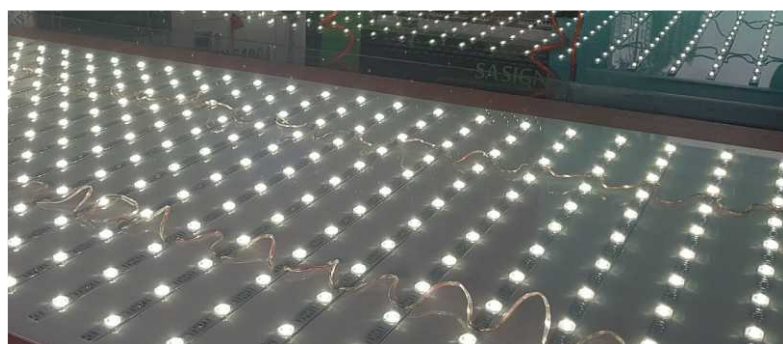
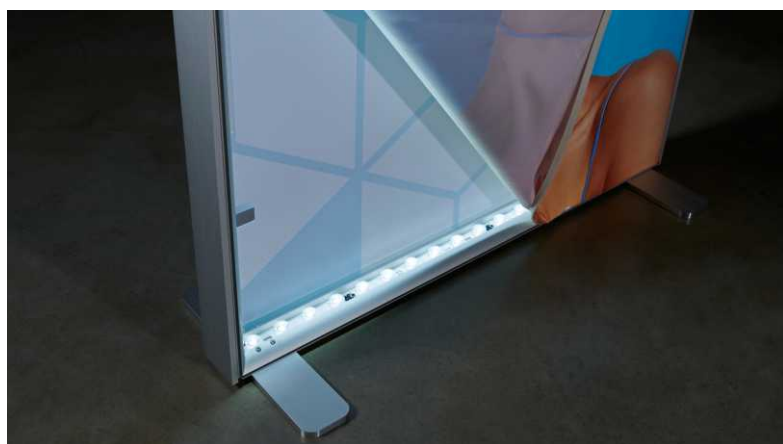
Product Parameters

Input Voltage	DC12V
Power	18W
Luminous Flux	1200-2160LM
Lifetime	2 YEARS
Dimension	990x25x4.8mm
Package	2000pcs/ctn
Color	<input type="radio"/> <input type="radio"/> <input type="radio"/>



Product Features

- ◎ Heat resistant led strip light, select and use high luminous and long life SMD2835 led chip, high brightness, wide angle, low decay and good consistency.
- ◎ It's cheapest cost for light box ,just need 3-5pcs in 1square meter.
- ◎ DC12V low working voltage, security and stability .
- ◎ Automatic SMT machines and soldering machines, advanced equipment
- ◎ Easy for installation, widely used in all kinds of decorative place.





www.mijiled.com

Focusing on LED power supply industry
for more than 19 years

PROFESSIONAL LED POWER SUPPLY MANUFACTURER



Chaos Cao Manager

WhatsApp/Wechat/Tel **+86 15387748274**

Erica Wu Sales Manager

WhatsApp/Wechat/Tel **+86 18170201204**



Wechat



Whatsapp(1)



Whatsapp(2)