



Instruction Manual

of Automatic Alternative Current Electrical Power Regulator



Rev: 02; Effective From June,25th,2022

Zhejiang DELIXI Electrical Co., Ltd.

Add.: #155,Zhandong Rd.,Liushi town, Yueqing, Zhejiang province, China

Tel: (86-577)6177 8888

CATALOGUE

1 Equipment description.....	3
2 Equipment installation.....	4
3 Operation of the machine.....	6
4 Electrical schematic diagram.....	7

1 Equipment description

1-1 Use of equipment

This equipment is designed and manufactured by Co., Ltd., and it is used for stabilizing the AC electrical power.

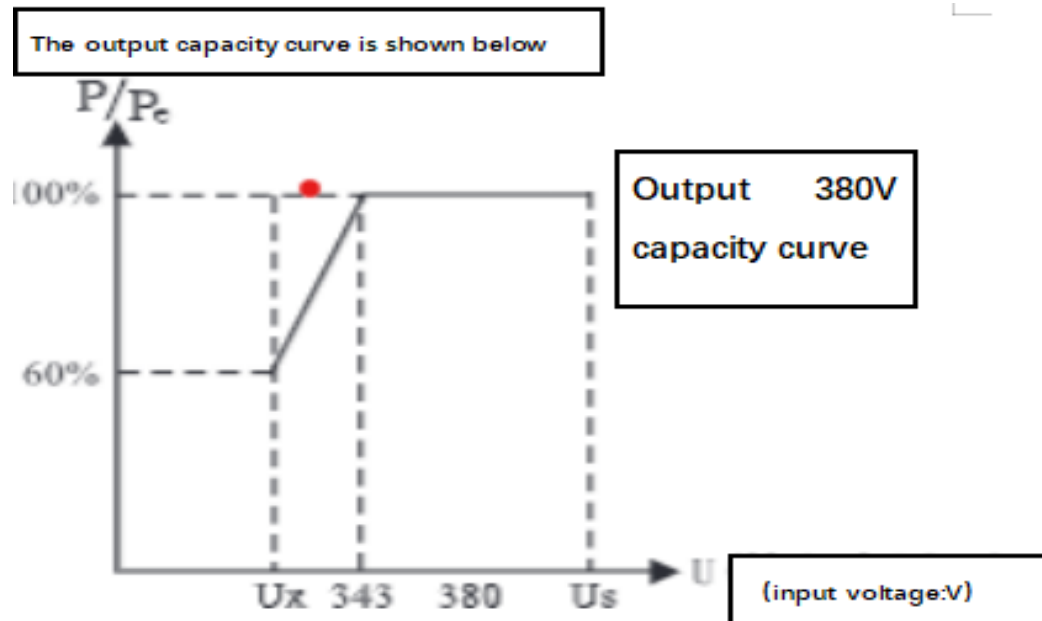
1-2 Equipment parameter

1.2.1 General Parameter

Equipment model	SJW 15kVA
Electrical power supply input	AC304~456, 19KW
Electrical power supply output	AC380V, 19KW
Equipment weight(Net)	60KG
Equipment Dimension(mm)	370*350*720(LWH)
Environment temperature	10~35℃
Environment humidity	≤70%

1.2.2 Technical Parameter

model number	SJW		
power rating	kVA	1.5~30	45~60
output	stable pressure accuracy	380 ± 4%	
voltage	undervoltage protection	184 ± 4 (Phase voltage) (not set for conventional products) can be formulated	
	overvoltage crowbar	246 ±	
input voltage range	V	260~430	304~456
reaction time	s	<1 (When the input voltage changes by 10%)	
temperature rise	K	<80	
Frequency	Hz	50/60	
insulation resistance	MΩ	≥5	
withstand voltage	V/5s	1500	
efficiency		>92%	
Maximum rated current	A	2.3(1.5kVA)、4.6(3kVA)、6.8(4.5kVA)、9.1(6kVA) 13.7(9kVA)、22.8(15kVA)、30.4(20kVA)、45.6(30kVA) 68(45kVA)、91(60kVA)	
operative norm		Q/DLX155	
litterae credentiales		CE	



2 Equipment installation

When installing the equipment, pay attention to adjust the height of the feet to keep the equipment level. The installation site should pay attention to leaving the necessary space (**at least 0.5meter**) for equipment heat radiation.

2.1 Installation steps

2.1.1 Before connecting the input and output cables, **YOU MUST MAKE SURE THE POWER SWITCH IS TURNED OFF FIRSTLY;**

2.1.2 Remove the cover in the back of machine;

2.1.3 Connect the ground wire first, then connect the power input and output cable as the shown note, then put on the cover.

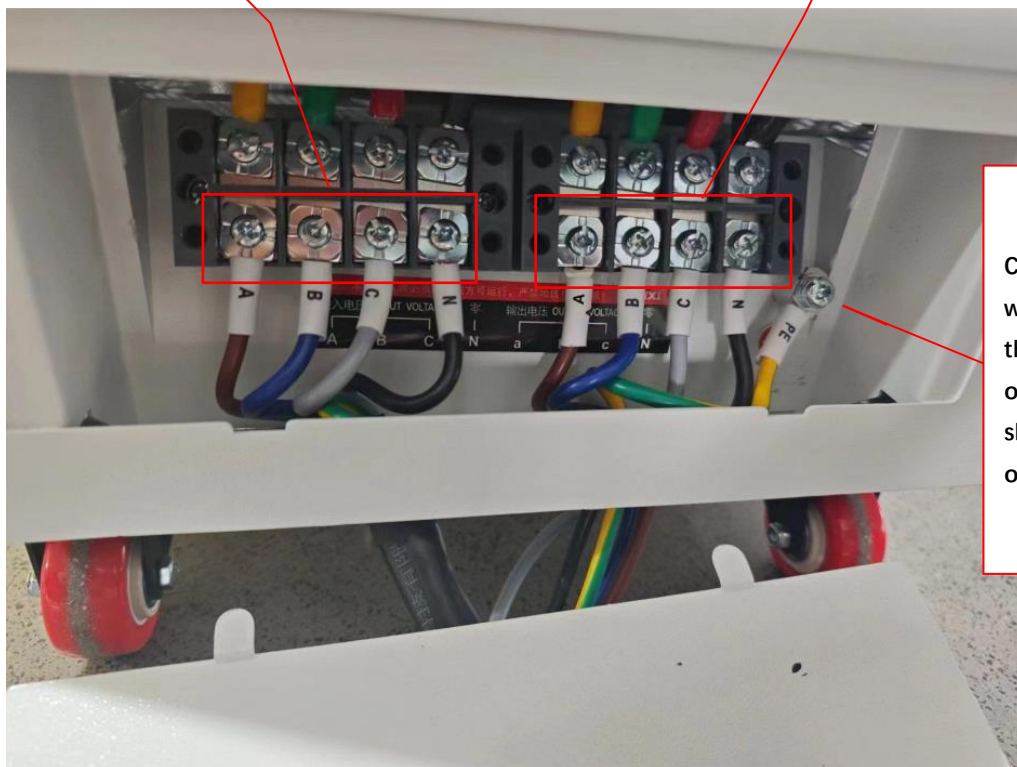


Power Switch

Cover

Input area

Output area



Connect the ground wire first, then connect the power input and output cable as the shown note., then put on the cover.

3. Operation of the machine

Turn on the power switch on the back of machine.

The machine front panel will display the Input and Output voltage.

If you need power off the machine, please turn off the power switch on the back of machine.



Power Switch



3P Output voltage display

3P Input voltage display

4. Electrical Schematic Diagram

