

Campro Series

Campro Precision Machinery Co., Ltd.

No. 12, Jingke 1st Road, Nantun District,
Taichung City 40852



Campro Precision Machinery (Jiaxing) Co., Ltd.

No.429 Yunhai Road, Jiaxing City,
Zhejiang Province



General Agency

Shanghai Zopo Intelligent Equipment Co.,Ltd

9 Floor, Building 1, Sinomach Group Campus,
No.778 Jinji Road, Pudong New Area, Shanghai
P.O: 201206, China
TEL: 86-021-68360398
E-mail: neo.wang@shanghaizopo.com

- Photos in this document may include special attachments; actual appearance may vary slightly depending on specifications.
- The content of this document is subject to change due to product improvements without prior notice.
- For any inquiries regarding the content of this document, please contact Campro' s Sales Department.



CE ISO 9001



Campro

www.shanghaizopo.com

Company Profile



Established in 2003, Campro has been actively engaged in the CNC equipment industry for over two decades. As a national high-tech enterprise, the company consistently prioritizes technological innovation as its core driver, focusing on building an integrated high-end equipment ecosystem that combines independent R&D, intelligent manufacturing, and service solutions. Its products and services mainly focus on high-end industries such as new energy vehicles \ aerospace \ semiconductors and ships, which effectively promote customers to achieve industrial upgrading and efficiency improvement.

Looking ahead, the company will uphold its core values of "integrity-driven innovation and excellence through dedication" actively aligning with national strategies for high-end equipment development. By leveraging its exceptional product performance and service capabilities, Campro aims to propel the domestic manufacturing industry toward high-quality and intelligent advancement, striving to establish itself as a benchmark enterprise in the CNC equipment sector.



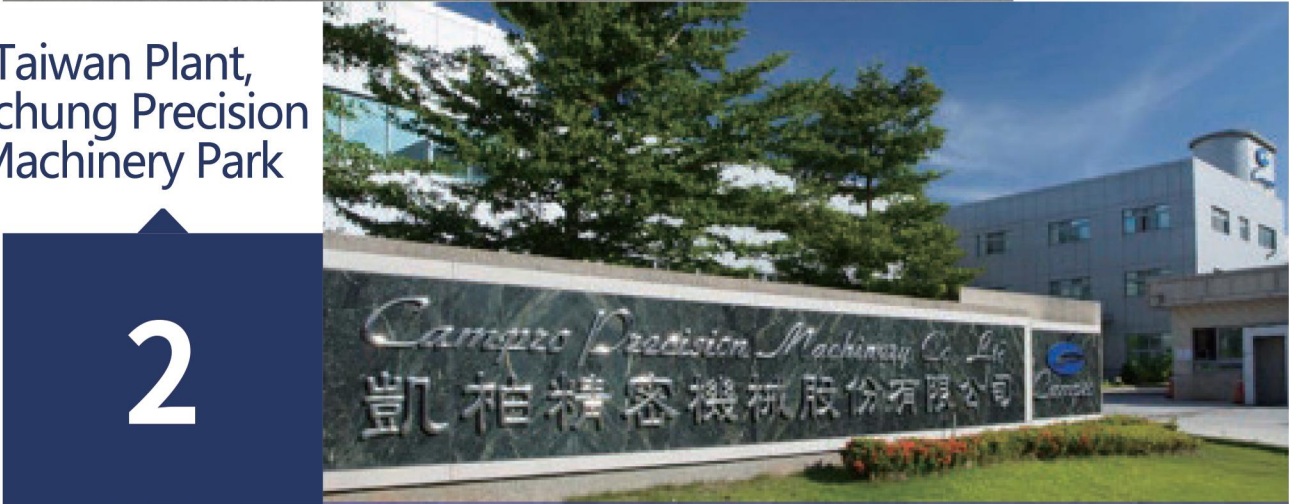
>> Cross Strait research and development, production, and global synchronized sales



1

Campro Precision Machinery (Jiaxing) Co., Ltd.

Taiwan Plant, Taichung Precision Machinery Park



2



3

Pennsylvania Bethlehem

Parameter List

Content	unit	CAMPRO-500B	CAMPRO-630B	CAMPRO-800B	CAMPRO-1000B
Travel					
X-axis travel	mm	800	1020	1270	1530
Y-axis travel	mm	725	850	1050	1250
z-axis travel	mm	725	890	1050	1200
Table					
Distance from spindle center to worktable surface	mm	50-775	70-920	50-1100	50-1300
Distance from spindle nose to worktable center	mm	200-925	200-1090	230-1280	270-1470
Distance from worktable surface to floor	mm	1100	1300	1320	1360
Worktable area	mm	(500 x 500) x 2pcs	(630 x 630)x 2pcs	(800 x 800) x 2pcs	(1000 x 1000)x 2pcs
Bolt specification	mm	24-M16 xP2.0	24-M16 x P2.0	24-M16 x P2.0	24-M16 xP2.5
Maximum worktable load	Kg	500	1200	2000	2000
Minimum worktable indexing	deg	1° (OPT. 0.001° / 5°)	1° (OPT. 0.001° / 5°)	1° (OPT. 0.001° / 5°)	1° (OPT. 0.001° / 5°)
Spindle					
Spindle taper		BT-50	BT-50	BT-50	BT-50
Spindle type		Direct drive	Gear type	Gear type	Gear type
Spindle bearing inner diameter	mm	Ø 100	Ø 100	Ø 100	Ø 100
Spindle speed	rpm	6000	6000	6000	6000
Rapid feed					
Main spindle motor (30-minute rating)	kw	15 /18.5 (α15)	15/18.5(α15)/22 / 26(α22 opt.)	15 /18.5 (α15)/22 / 26(α22 opt.)	15 /18.5 (α15)/22/26(α22 opt.)
Three-axis cutting feed rate	mm/min	1-10000	1-6000	1-6000	1-6000
Three-axis rapid feed rate	M/min	30 (36 opt.)	24(30 opt.)	15/15 /12	15/15 /12
Automatic tool changer					
Three-axis minimum setting unit	mm	0.001	0.001	0.001	0.001
Number of tools	pcs	40(60 opt.)	40(60 /90 /120 opt.)	40(60/90/120 opt.)	40(60/90 /120 opt.)
Maximum tool diameter	mm	Ø 125 x400	Ø 125 x500	Ø 125 x 600	Ø 125 x 600
Maximum tool weight	Kg	20	20	20	20
Tool holder	type	P50T-1	P50T-1	P50T-1	P50T-1
Tool change time / tool-to-tool	sec.	2.9 (60 HZ)	2.9(60 HZ)	2.9 (60 HZ)	2.9(60 HZ)
Automatic pallet changer					
Number of pallets	pcs.	2	2	2	2
Changing method	type	迴轉式	迴轉式	迴轉式	迴轉式
Changeover time	sec.	8 SEC	10 SEC	12 SEC	18 SEC
Others					
Machine footprint : (Length x Width Height)	mm	4835 x3227 x2957	6664x4175 x3632	7500x4200x3800	8320 x 4230 x5665
Machine weight (Net/Gross)	kg	16000/19000	27000/31000	29000/33000	31000/35000
Power requirement	KVA	40	50	50	50

Due to continuous research and improvement by our company, we reserve the right to modify the mechanical specifications and features shown in this catalog without prior notice.

500B/630B/800B/1000B

Campro Series

Horizontal Machining Center



The machine base adopts an integrated "T"-shaped cast structure layout. The Y-axis column features a high-rigidity stepped saddle design, mounted on the T-shaped base for left-right movement (X-axis). The B-axis rotary table moves forward/backward (Z-axis) on the base. The T-shaped base and column employ a box-type structure with reinforced ribs for heavy loads, delivering exceptional cutting rigidity.

Production Technical Capabilities

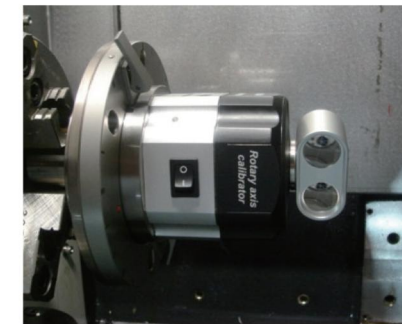


Quality Control Center



Industry-leading machine tools ensure machining precision

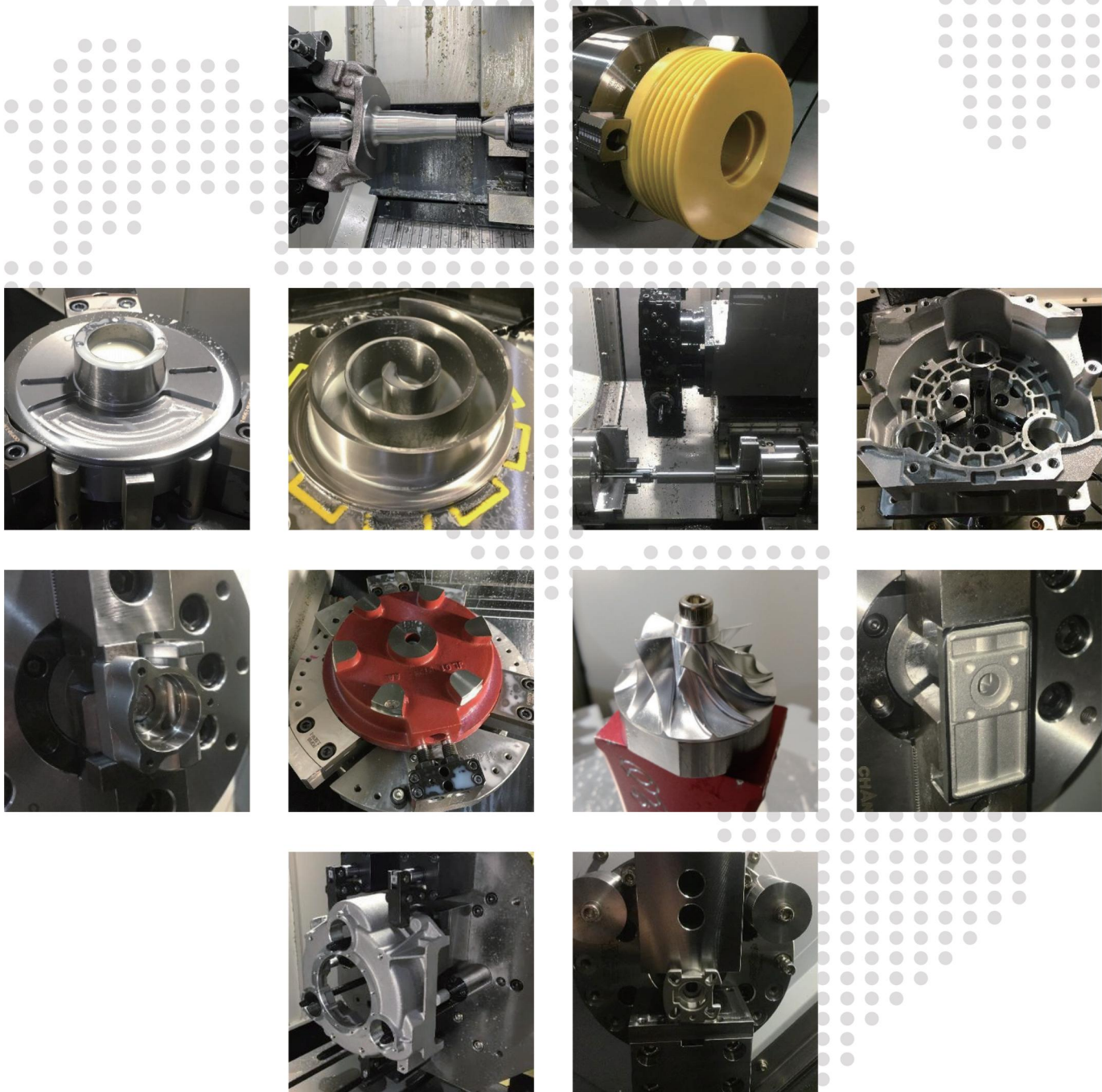
Not available



Precision measurement equipment and meticulous inspection processes ensure product quality

Automated Lines and Turnkey Cases

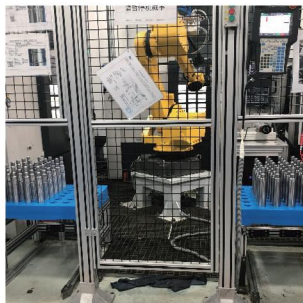
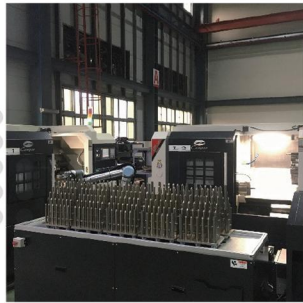
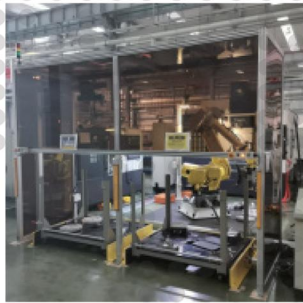
Application Delivery Capability - Turnkey Experience



Application Delivery Capability - Turnkey Experience



Application Delivery Capability - Automated
Line Delivery Experience



After-Sales Service

The company uses its Jiaxing factory as the inland service headquarters, with an after-sales team totaling approximately 30 people. Offices are established in North China (Beijing), Central China (Wuhan), South China (Guangzhou), Southwest China (Chongqing), Northwest China (Xi' an), and East China (Qingdao). These offices stock nearly 100,000 yuan worth of routine machine parts, fully ensuring the timeliness and effectiveness of after-sales services.

After-Sales Team
About 30 people

Regular spare parts for the office,
nearly 100000 yuan

Our after-sales commitment: A 12-month warranty for the entire machine and an 18-month warranty for the system, calculated from the acceptance date of Kaibo Precision Machinery equipment purchase. Any malfunctions caused by machine quality

Even after the warranty expires, the company charges only for the cost of replacement parts. Service personnel will conduct regular user follow-ups (quarterly) to maintain the equipment. If cumulative downtime due to malfunctions during the warranty period reaches five days, the warranty period will be extended by the accumulated downtime.

