

Campro Precision Machinery Co., Ltd.

No. 12, Jingke 1st Road, Nantun District,
Taichung City 40852



General Agency

Shanghai Zopo Intelligent Equipment Co.,Ltd

9 Floor, Building 1, Sinomach Group Campus,
No.778 Jinji Road, Pudong New Area, Shanghai
P.O: 201206, China
TEL: 86-021-68360398
E-mail: neo.wang@shanghaizopo.com

Campro Precision Machinery (Jiaxing) Co., Ltd.

No.429 Yunhai Road, Jiaxing City,
Zhejiang Province



CNV Series



- Photos in this document may include special attachments; actual appearance may vary slightly depending on specifications.
- The content of this document is subject to change due to product improvements without prior notice.
- For any inquiries regarding the content of this document, please contact Campro' s Sales Department.

CE ISO 9001



Campro

www.shanghaizopo.com

Company Profile



Established in 2003, Campro has been actively engaged in the CNC equipment industry for over two decades. As a national high-tech enterprise, the company consistently prioritizes technological innovation as its core driver, focusing on building an integrated high-end equipment ecosystem that combines independent R&D, intelligent manufacturing, and service solutions. Its products and services mainly focus on high-end industries such as new energy vehicles \ aerospace \ semiconductors and ships, which effectively promote customers to achieve industrial upgrading and efficiency improvement.

Looking ahead, the company will uphold its core values of "integrity-driven innovation and excellence through dedication" actively aligning with national strategies for high-end equipment development. By leveraging its exceptional product performance and service capabilities, Campro aims to propel the domestic manufacturing industry toward high-quality and intelligent advancement, striving to establish itself as a benchmark enterprise in the CNC equipment sector.



>> Cross Strait research and development, production, and global synchronized sales



1

Campro Precision Machinery (Jiaxing) Co., Ltd.

Taiwan Plant, Taichung Precision Machinery Park



2



3

Pennsylvania Bethlehem

900/1100/1300/1280

CNV Series

High-Efficiency Vertical
Machining Center



• Reliable performance from high-speed, high-rigidity design

The new CNV series retains the robust structure characteristic of Kaibo. Not only does it perform well, but it also enhances Z-axis speed.

It is prepared for users' high-efficiency machining and automation layouts.

• High-rigidity body designed with FEM analysis technology

Using EEM finite element analysis technology, the machine structure is adjusted and optimized to achieve high rigidity.

It realizes high adaptability and efficiency from heavy cutting to high-speed cutting.

Parameter List

Model/Project		Unit	CNV-900	CNV-1100	CNV-1300	CNV-1280
Travel						
X-axis travel		mm	900	1100	1300	1280
Y-axis travel		mm	560	580	600	650
z-axis travel		mm	560	560	610	630
Distance from spindle nose to table surface		mm	90-650	90-650	80-690	100-730
Distance from spindle center to column rail surface		mm	646	646	686	725
Table						
Table area		mm	1000 x550	1200 x550	1400 x600	1380 x650
Maximum table load capacity		kg	600	700	900	1200
T-slot < width x quantity x pitch >		mm	18x5x100	18x5x100	18x5x100	18x5x100
Spindle						
Maximum spindle speed		rpm	10000	10000	10000	10000
Spindle drive method			Belt	Belt	Belt	Belt
Spindle taper			NO.40	NO.40	NO.40	NO.40
Spindle bearing inner diameter		mm	70	70	70	70
Automatic tool changer system						
Tool holder type		type	BT	BT	BT	BT
Tool storage capacity		pcs.	24	24	24	24
Maximum tool diameter < no adjacent tool >		mm	Ø 80< Ø 150>	Ø 80< Ø 150>	Ø 80< Ø 150>	Ø 80< Ø 150>
Maximum tool length		mm	250	250	250	250
Maximum tool weight		kg	7	7	7	7
Tool selection method			Random storage method	Random storage method	Random storage method	Random storage method
24 tools	Tool-to-tool	sec.	2.5	2.5	2.5	2.5
	Point-to-point	sec.	5	5	5	5
Feed rate						
Rapid feed	X, Y axis	m/min.	36	36	36	36
	Z axis	m/min.	30	30	30	24
Cutting feed		mm/min.	10000	10000	10000	10000
Other specifications						
Floor space < width x depth >		mm	3150x2500	3450 x2500	3950 x2760	4000x2770
Machine weight		kg	6700	7000	7500	8500
Machine height		mm	2815	2815	3010	2800
Power supply		kva	20	20	25	30
Air pressure source		kg/cm²	6-8	6-8	6-8	6-8

Maximum spindle speed: The maximum speed is sometimes limited by the fixtures and tools used.

The actual values of power supply, air pressure source, machine weight, and dimensions may vary from the above figures due to differences in optional configurations and peripheral equipment.



Standard/Optional Features List

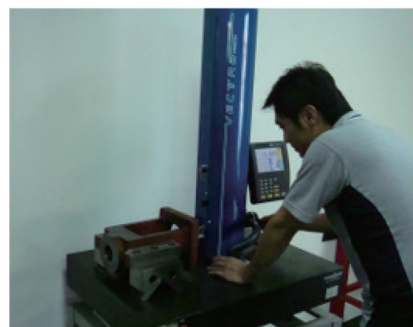
Model type	CNV-900	CNV-1100	CNV-1300	CNV-1280
10000RPM Belt-Driven Spindle	●	●	●	●
Front Ring Jet Spindle	●	●	●	●
Three-Axis Screw Pre-Tension	●	●	●	●
Air Pressure Unit	●	●	●	●
Air Gun Cover Unit	●	●	●	●
Water Gun Unit	●	●	●	●
Spindle Air Blow System	●	●	●	●
Spindle Oil Chiller	●	●	●	●
Three-Axis Telescopic Cover	●	●	●	●
Electrical Cabinet Air Conditioner	●	●	●	●
Automatic Tool Changer	●	●	●	●
Automatic Lubrication System	●	●	●	●
Machine Work Light	●	●	●	●
Three-Color Warning Light	●	●	●	●
Automatic Power Off	●	●	●	●
Base Chip Flushing	○	○	○	○
Belt-Driven Spindle 12000RPM	○	○	○	○
Direct-Drive Spindle 10000RPM	○	○	○	○
Direct-Drive Spindle 12000RPM	○	○	○	○
Direct-Drive Spindle 15000RPM	○	○	○	○
Built-In Spindle 16000-40000RPM	○	○	○	○
Spindle High-Pressure Water Outlet 20/50/70BAR	○	○	○	○
Automation Interface	○	○	○	○
Tool Magazine Automatic Door	○	○	○	○
Three-Axis Linear Scale	○	○	○	○
Tool Breakage Detection	○	○	○	○
Cutting Fluid Thermostat	○	○	○	○
Workpiece Measurement System	○	○	○	○
Chip Conveyor	○	○	○	○
Special Material Chip Conveyor	○	○	○	○
Oil Mist Collector	○	○	○	○
Tool Length Measurement	○	○	○	○
Rotary Table	○	○	○	○
BT50 Spindle	×	○	○	○
Voltage Stabilizer	○	○	○	○

Production Technical Capabilities



Industry-leading machine tools ensure machining precision

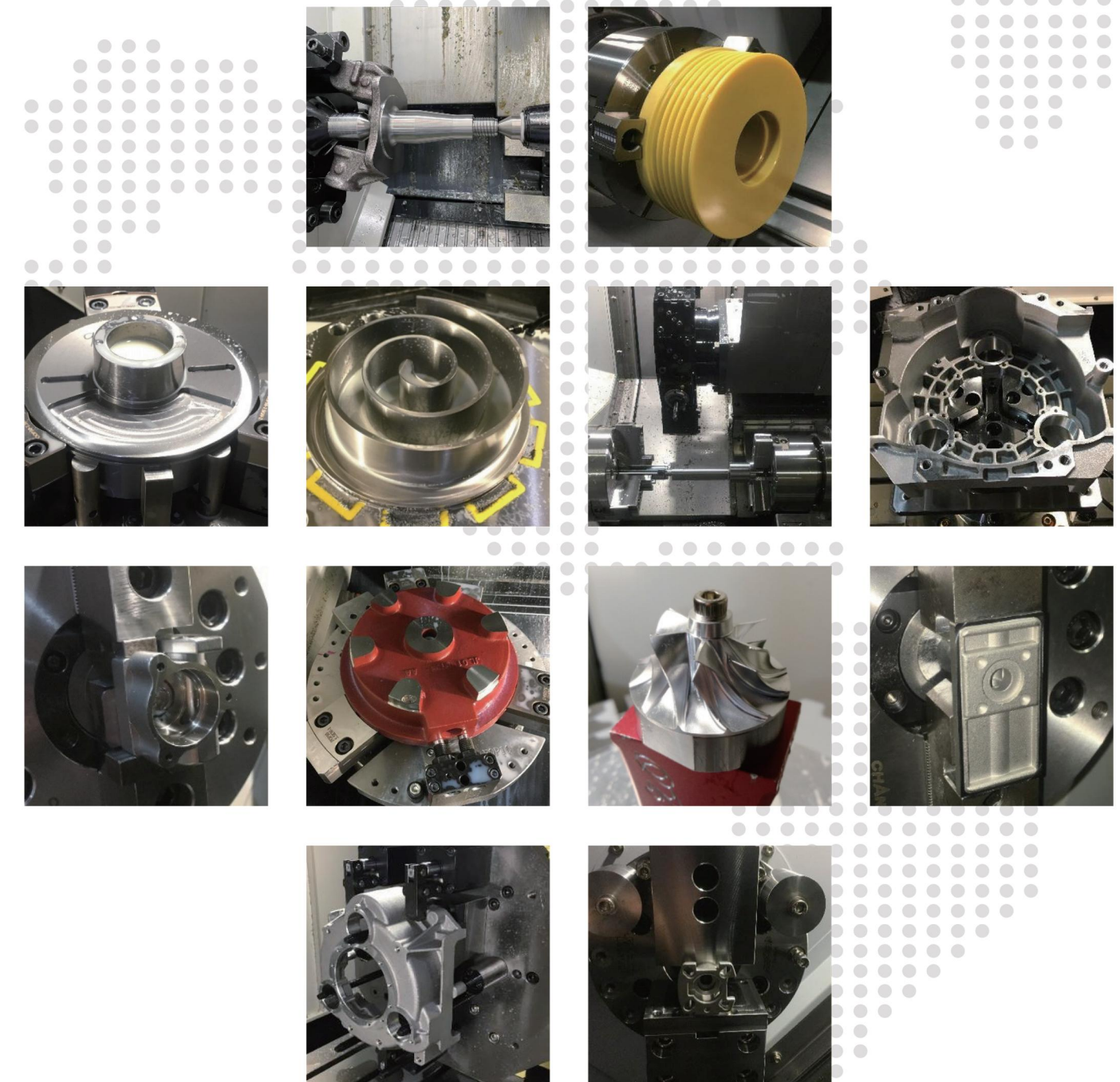
Quality Control Center



Precision measurement equipment and meticulous inspection processes ensure product quality

Automated Lines and Turnkey Cases

Application Delivery Capability - Turnkey Experience



Application Delivery Capability - Turnkey Experience



Application Delivery Capability - Automated Line Delivery Experience



After-Sales Service

The company uses its Jiaxing factory as the inland service headquarters, with an after-sales team totaling approximately 30 people. Offices are established in North China (Beijing), Central China (Wuhan), South China (Guangzhou), Southwest China (Chongqing), Northwest China (Xi' an), and East China (Qingdao). These offices stock nearly 100,000 yuan worth of routine machine parts, fully ensuring the timeliness and effectiveness of after-sales services.

After-Sales Team
About 30 people

Regular spare parts for the office,
nearly 100000 yuan

Our after-sales commitment: A 12-month warranty for the entire machine and an 18-month warranty for the system, calculated from the acceptance date of Kaibo Precision Machinery equipment purchase. Any malfunctions caused by machine quality

Even after the warranty expires, the company charges only for the cost of replacement parts. Service personnel will conduct regular user follow-ups (quarterly) to maintain the equipment. If cumulative downtime due to malfunctions during the warranty period reaches five days, the warranty period will be extended by the accumulated downtime.

