

CPL-3010Y.SY Series

Campro Precision Machinery Co., Ltd.

No. 12, Jingke 1st Road, Nantun District,
Taichung City 40852



Campro Precision Machinery (Jiaxing) Co., Ltd.

No.429 Yunhai Road, Jiaxing City,
Zhejiang Province



General Agency

Shanghai Zopo Intelligent Equipment Co.,Ltd

9 Floor, Building 1, Sinomach Group Campus,
No.778 Jinji Road, Pudong New Area, Shanghai
P.O: 201206, China
TEL: 86-021-68360398
E-mail: neo.wang@shanghaizopo.com

- Photos in this document may include special attachments; actual appearance may vary slightly depending on specifications.
- The content of this document is subject to change due to product improvements without prior notice.
- For any inquiries regarding the content of this document, please contact Campro' s Sales Department.



CE ISO 9001



Campro

www.shanghaizopo.com

Company Profile



Established in 2003, Campro has been actively engaged in the CNC equipment industry for over two decades. As a national high-tech enterprise, the company consistently prioritizes technological innovation as its core driver, focusing on building an integrated high-end equipment ecosystem that combines independent R&D, intelligent manufacturing, and service solutions. Its products and services mainly focus on high-end industries such as new energy vehicles \ aerospace \ semiconductors and ships, which effectively promote customers to achieve industrial upgrading and efficiency improvement.

Looking ahead, the company will uphold its core values of "integrity-driven innovation and excellence through dedication" actively aligning with national strategies for high-end equipment development. By leveraging its exceptional product performance and service capabilities, Campro aims to propel the domestic manufacturing industry toward high-quality and intelligent advancement, striving to establish itself as a benchmark enterprise in the CNC equipment sector.



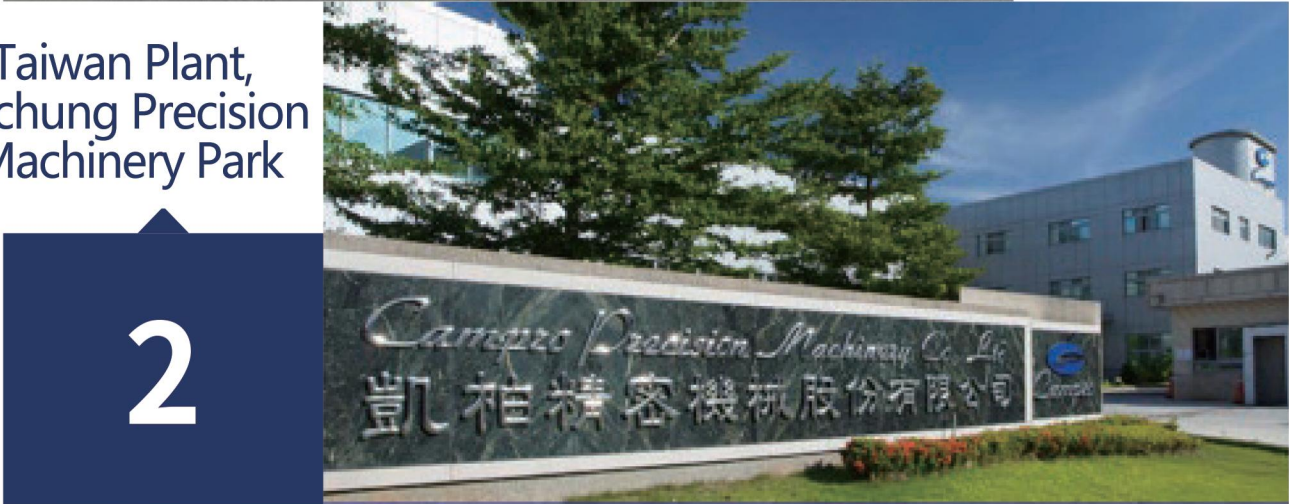
>> Cross Strait research and development, production, and global synchronized sales



1

Campro Precision Machinery (Jiaxing) Co., Ltd.

Taiwan Plant, Taichung Precision Machinery Park



2



3

Pennsylvania Bethlehem

3010Y/3010SY

CPL-3010Y.SY Series

CNC turning-milling compound machine



The integrated 30° inclined back base design provides the machine with optimal rigidity and stability during cutting: excellent chip evacuation allows operators to easily clean chips. The guide rail features a wide hard rail slide cast integrally with the structure, combined with Turcite-B wear-resistant strips and precision scraping, reducing resistance to ensure smooth transmission and maintaining high precision performance over extended periods.

Y-axis travel 55 enables complex workpiece processing in a short time, meeting machining requirements unattainable by conventional lathes.

Parameter List

Content	unit	CPL-3010Y	CPL-3010SY
Machining Range			
Max. Swing Over Bed	mm	750	750
Max. Swing Over Saddle	mm	650	650
Max. Turning Length	mm	740 (1240)	760 (1260)
Max. Milling Length	mm	850 (1350)	850 (1350)
Max. Turning Diameter	mm	400	330
行程			
X-axis Travel	mm	260	260
Z-axis Travel (Optional)	mm	850 (1350)	850 (1350)
Y-axis Travel	mm	110 (±55)	110 (±55)
Feed			
Rapid Traverse (K/Y/Z)	m /min.	20/10/20	20/10/20
Spindle			
Spindle Nose	type	A2-8 (Belt Type)	A2-8 (Belt Type)
Hydraulic Chuck	inch	10"	10"
Spindle Draw Tube Bore	mm	Ø75	Ø75
Spindle Bearing Diameter	mm	Ø130	Ø130
Spindle Speed	rpm	3000	3000
Spindle Motor	kW (HP)	15 / 18.5 (25HP)	15 / 18.5 (25HP)
C-axis Indexing Accuracy	deg.	0.001	0.001
Sub Spindle			
Spindle Nose	type	—	A2-5 (皮帶式)
Hydraulic Chuck	inch	—	6"
Spindle Draw Tube Bore	mm	—	Ø32
Sub Spindle Motor	kW (HP)	—	5.5 / 7.5 (10HP)
Sub Spindle Speed	rpm	—	5000
C-axis Indexing Accuracy	deg.	—	0.001
Dota			
Dota Type	type	12-station	12-station
Tool system	type	BMT-65	BMT-65
Tool Change Time	sec.	0.2	0.2
Max. Speed	rpm	5000	5000
Others			
Floor Space (Incl. Chip Conveyor)	mm	4752 (5252) x 2110	4752 (5252) x 2110
Machine Height	mm	2735	2735
Machine Weight	kg	6500 (7200)	8500 (9200)
Coolant Tank Capacity	L	250 (400)	250 (400)
Power Requirement	kVA	30	40
Hydraulic Source	kg / cm²	35-40	35-40
Pneumatic Source	kg / cm²	6-8	6-8

Based on the principle of continuous innovation and research, our company reserves the right to change specifications without prior notice.



Standard/Optional Features List

Model	CPL-3010Y	CPL-3010SY
Three-jaw hydraulic chuck	●	●
Hard jaws	X1Set	X1 Set
Soft jaws	X3 Set	X3 Set
Hydraulic unit	●	●
Hydraulic locking tailstock	●	×
Programmable tailstock	●	×
Chain-type chip conveyor with chip collection cart	●	●
Special material chip conveyor	○	○
Chip flushing system	●	●
Tank and coolant pump	●	●
Screw pre-tension	●	●
Handwheel (MPG)	●	●
Electrical cabinet air conditioner	●	●
Oil-water separator	●	●
Three-color signal lamp	●	●
Work light	●	●
Oxygen lance cover unit	●	●
Transformer	●	●
Automation interface	○	○
Oxygen blowing above chuck	○	○
Water gun unit	○	○
Tool breakage detection	○	○
Coolant temperature control unit	○	○
Hydraulic steady rest	○	○
Spindle sleeve chuck	○	○
Oil mist collector	○	○
Tool measuring arm	○	○
Workpiece measurement	○	○
Workpiece collector	○	○
Automatic feeder	○	○
Automatic door	○	○
Automatic power-off	○	○
Axial power tool holder	X1 Set	X1 Set
Radial power tool holder	X1 Set	X1 Set
Voltage stabilizer	○	○

Based on the principle of continuous innovation and research alliance, our company reserves the right to change specifications without prior notice.

5 SY indicates with sub-spindle.
CPL-3010Y.SY
Series

●Standard ○Optional ×Not available



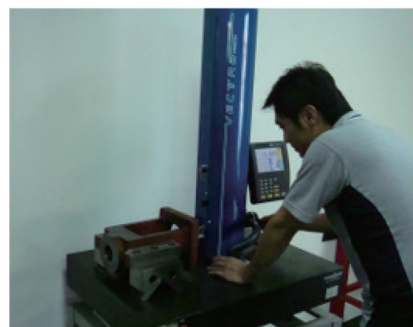
Production Technical Capabilities



Industry-leading machine tools ensure machining precision



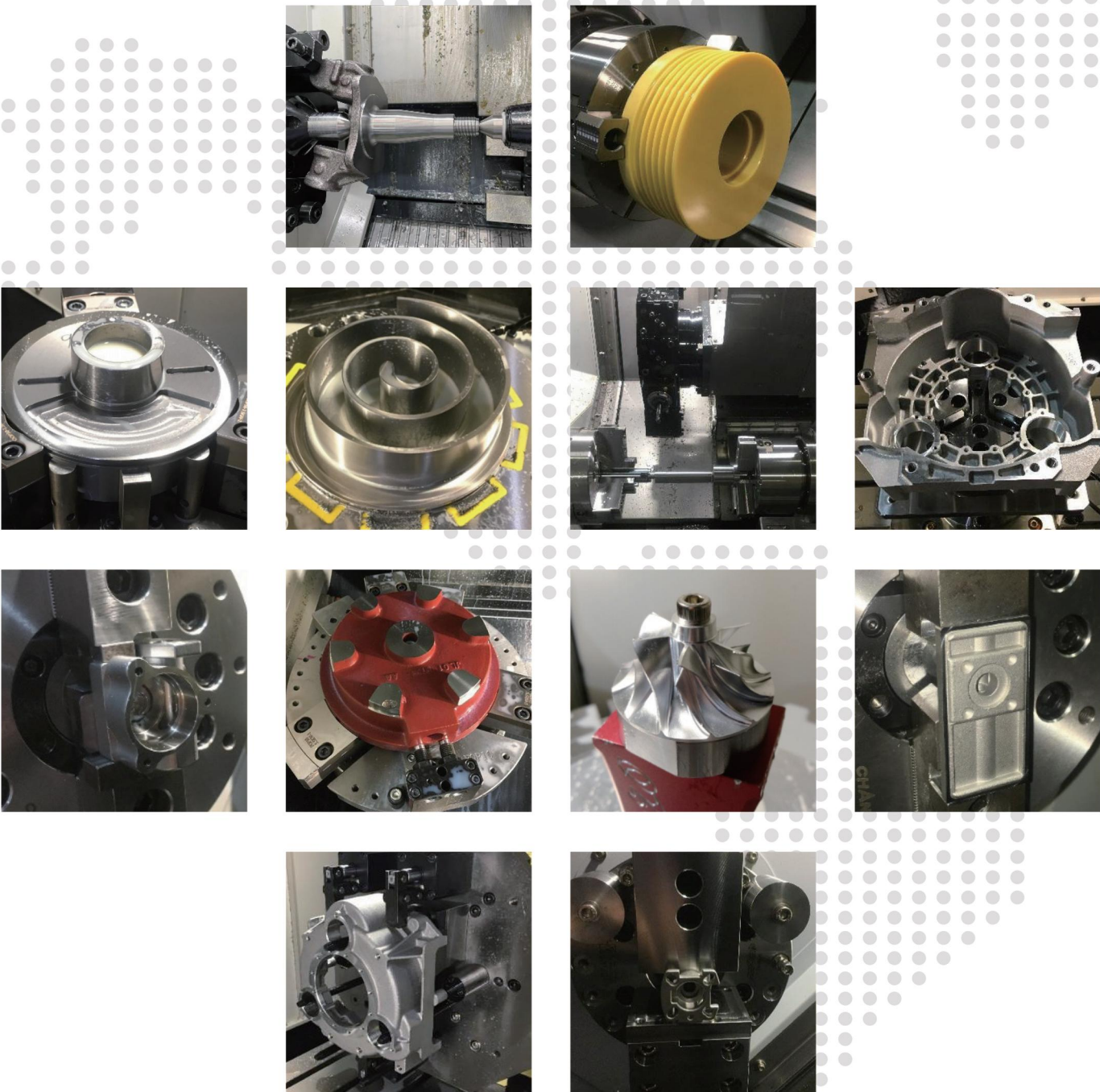
Quality Control Center



Precision measurement equipment and meticulous inspection processes ensure product quality

Automated Lines and Turnkey Cases

Application Delivery Capability - Turnkey Experience



Application Delivery Capability - Turnkey Experience



Application Delivery Capability - Automated Line Delivery Experience



After-Sales Service

The company uses its Jiaxing factory as the inland service headquarters, with an after-sales team totaling approximately 30 people. Offices are established in North China (Beijing), Central China (Wuhan), South China (Guangzhou), Southwest China (Chongqing), Northwest China (Xi' an), and East China (Qingdao). These offices stock nearly 100,000 yuan worth of routine machine parts, fully ensuring the timeliness and effectiveness of after-sales services.

After-Sales Team
About 30 people

Regular spare parts for the office,
nearly 100000 yuan

Our after-sales commitment: A 12-month warranty for the entire machine and an 18-month warranty for the system, calculated from the acceptance date of Kaibo Precision Machinery equipment purchase. Any malfunctions caused by machine quality

Even after the warranty expires, the company charges only for the cost of replacement parts. Service personnel will conduct regular user follow-ups (quarterly) to maintain the equipment. If cumulative downtime due to malfunctions during the warranty period reaches five days, the warranty period will be extended by the accumulated downtime.

