

Campro Precision Machinery Co., Ltd.

No. 12, Jingke 1st Road, Nantun District,
Taichung City 40852



Campro Precision Machinery (Jiaxing)
Co., Ltd.

No.429 Yunhai Road, Jiaxing City,
Zhejiang Province



General Agency

Shanghai Zopo Intelligent Equipment Co.,Ltd

9 Floor, Building 1, Sinomach Group Campus,
No.778 Jinji Road, Pudong New Area, Shanghai
P.O: 201206, China
TEL: 86-021-68360398
E-mail: neo.wang@shanghaizopo.com

- Photos in this document may include special attachments; actual appearance may vary slightly depending on specifications.
- The content of this document is subject to change due to product improvements without prior notice.
- For any inquiries regarding the content of this document, please contact Campro' s Sales Department.

CPL Series



CE ISO 9001

TD09005D



Campro

www.shanghaizopo.com

Company Profile



Established in 2003, Campro has been actively engaged in the CNC equipment industry for over two decades. As a national high-tech enterprise, the company consistently prioritizes technological innovation as its core driver, focusing on building an integrated high-end equipment ecosystem that combines independent R&D, intelligent manufacturing, and service solutions. Its products and services mainly focus on high-end industries such as new energy vehicles \ aerospace \ semiconductors and ships, which effectively promote customers to achieve industrial upgrading and efficiency improvement.

Looking ahead, the company will uphold its core values of "integrity-driven innovation and excellence through dedication" actively aligning with national strategies for high-end equipment development. By leveraging its exceptional product performance and service capabilities, Campro aims to propel the domestic manufacturing industry toward high-quality and intelligent advancement, striving to establish itself as a benchmark enterprise in the CNC equipment sector.



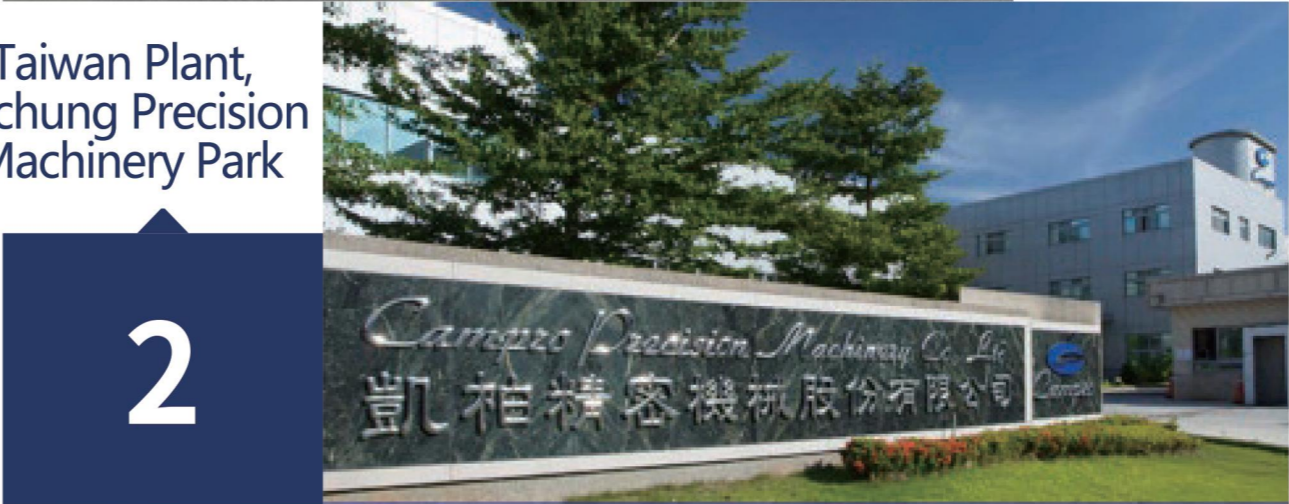
>> Cross Strait research and development, production, and global synchronized sales



1

Campro Precision Machinery (Jiaxing) Co., Ltd.

Taiwan Plant, Taichung Precision Machinery Park



2



3

Pennsylvania Bethlehem

106/208/3510/3512/3518/3520

CPL Series

Five-Axis Machining Center



• Full protection and aesthetically pleasing design

In addition to ensuring operational safety and environmental protection, it incorporates aesthetic design to present an elegant and pleasing appearance, while integrating ergonomic design to reduce the burden on operators in a simplified operating environment and increase efficiency.

The entire machine is designed with ventilation and heat dissipation holes at the heat source locations, making it easy to dissipate heat and avoid irregular deformation caused by heat sources, ensuring the accuracy of the machine.

Parameter List

Content	unit	CPL-106	CPL-208	CPL-3510	CPL-3512	CPL-3518	CPL-3520
Machining Range							
Maximum Swing Over Bed	mm	450	540	570	700	900	900
Maximum Swing Over Saddle	mm	258	335	367	500	700	700
Machining Length	mm	350	500	700	1000	2100 82.6	2050 80.7
Maximum Machining Diameter	mm	290	400	400	500	700	700
X-Axis							
Stroke	mm	150+20	200+20	200+20	250+25	355+30	355+30
Rapid Traverse Rate	m/min.	24	24	24	24	20	20
Z-Axis							
Stroke	mm	350	500	700	1000 39.3	2200 86.6	2150 84.6
Rapid Traverse Rate	m/min.	24	24	24	24 (20)	15 (20/12)	15 (20/12)
Spindle							
Spindle Nose type		A2-5	A2-6	A2-8	A2-11	A2-11	A2-15
Hydraulic Chuck (Optional)	nch	6"	8"	10"	12"	18"	20"
Hydraulic Chuck Through Hole Diameter	mm	Ø 45	Ø 52	Ø 75	Ø 117.5	Ø 117.5	Ø 165
Spindle Bearing Diameter	mm	90	100	130	170	170	240
Spindle Motor	kW	7.5/11	11/15	15/18.5	15/18.5	22/26Gear Type	22/26Gear Type
Spindle Speed	rpm	6000	4200	3000	2000	2000	1000
Turret							
Turret Type	type	10-Station	10-Station	10-Station	10-Station	8-Station	8-Station
Tool Holder Size	mm	□ 20/ Ø 32	□ 25/ Ø 40	□ 25/ Ø 40	□ 25/ Ø 40	□ 32/ Ø 50	32/ Ø 60
Tool Change Time	sec.	0.3	0.3	0.3	0.3	0.3	0.3
Tailstock							
Center Shaft Outer Diameter	mm	Ø 70	Ø 80	Ø 80	Ø 100	Ø 145	Ø 145
Center Stroke	mm	80	120	120	120	150	150
Morse Taper	type	MT-#4	MT-#4	MT-#4	MT-#5	MT-#6	MT-#6

Maximum spindle speed: The maximum speed may sometimes be limited by the fixtures and cutting tools used.

Actual values for power supply, air pressure source, machine weight, and dimensions may vary from the stated figures due to differences in optional configurations and peripheral equipment.



Standard/Optional Features List

Model	CPL-106	CPL-208	CPL-3510	CPL-3512	CPL-3518	CPL-3520
Three-jaw hydraulic chuck	●	●	●	●	●	●
Hard jaws	X1 set	X1 set	X1 set	X1 set	X1 set	X1 set
Soft jaws	X3 set	X3 set	X3 set	X3 set	X3 set	X3 set
Hydraulic unit	●	●	●	●	●	●
Manual hydraulic tailstock	●	●	●	×	×	×
Hydraulic locking tailstock	○	○	○	●	●	●
Programmable tailstock	○	○	○	●	●	●
Chip conveyor with chip cart	●	●	●	●	●	●
Rear-mounted chip conveyor	○	○	○	×	×	×
Special material chip conveyor	○	○	○	○	○	○
Chip flushing system	●	●	●	●	●	●
Coolant tank and pump	●	●	●	●	●	●
Screw pre-tension	●	●	●	●	●	●
Handwheel (MPG)	●	●	●	●	●	●
Electrical cabinet air conditioner	●	●	●	●	●	●
Oil-water separator	●	●	●	●	●	●
Three-color signal light	●	●	●	●	●	●
Work light	●	●	●	●	●	●
Oxygen lance cover unit	●	●	●	●	●	●
Transformer	●	●	●	●	●	●
Automation interface	○	○	○	○	○	○
Oxygen blowing above chuck	○	○	○	○	○	○
Water gun unit	○	○	○	○	○	○
Tool breakage detection	○	○	○	○	○	○
Coolant temperature control unit	○	○	○	○	○	○
Hydraulic steady rest	○	○	○	○	○	○
Spindle sleeve chuck	○	○	○	○	○	○
Oil mist collector	○	○	○	○	○	○
Tool length measurement	○	○	○	○	○	○
Workpiece measurement	○	○	○	○	○	○
Workpiece collector	○	○	○	○	○	○
Automatic feeder	○	○	○	○	○	○
Automatic door	○	○	○	○	○	○
Automatic power-off	○	○	○	○	○	○
12-station hydraulic turret	○	○	○	○	○	×
Servo turret	○	○	○	○	○	○
Voltage stabilizer	○	○	○	○	○	○

Based on the principle of continuous innovation and research alliance, our company reserves the right to change specifications without prior notice.

● Standard ○ Optional × Not available



Production Technical Capabilities



Industry-leading machine tools ensure machining precision



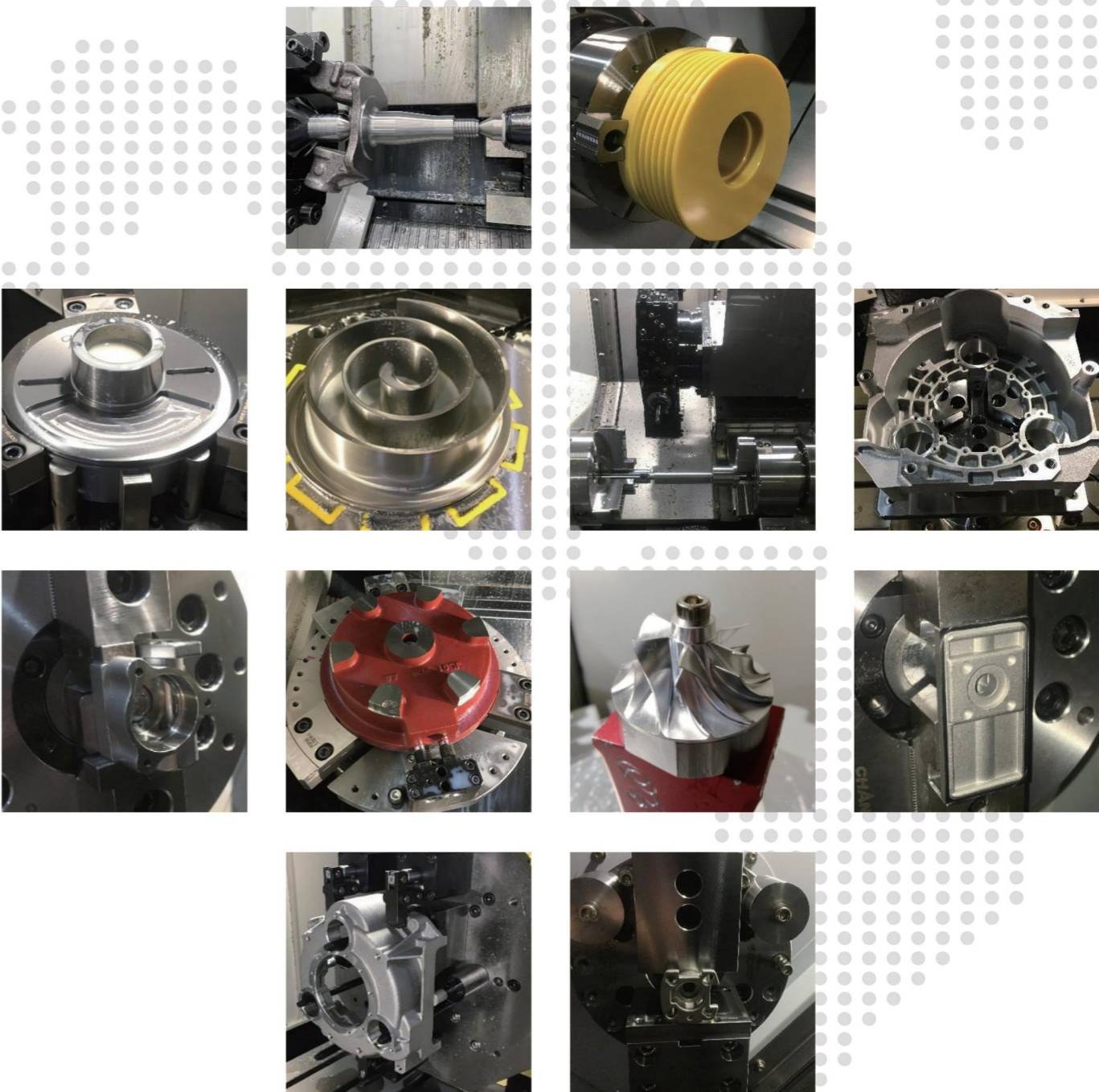
Quality Control Center



Precision measurement equipment and meticulous inspection processes ensure product quality

Automated Lines and Turnkey Cases

Application Delivery Capability - Turnkey Experience



Application Delivery Capability - Turnkey Experience



Application Delivery Capability - Automated Line Delivery Experience



After-Sales Service

The company uses its Jiaxing factory as the inland service headquarters, with an after-sales team totaling approximately 30 people. Offices are established in North China (Beijing), Central China (Wuhan), South China (Guangzhou), Southwest China (Chongqing), Northwest China (Xi' an), and East China (Qingdao). These offices stock nearly 100,000 yuan worth of routine machine parts, fully ensuring the timeliness and effectiveness of after-sales services.

After-Sales Team
About 30 people

Regular spare parts for the office,
nearly 100000 yuan

Our after-sales commitment: A 12-month warranty for the entire machine and an 18-month warranty for the system, calculated from the acceptance date of Kaibo Precision Machinery equipment purchase. Any malfunctions caused by machine quality

Even after the warranty expires, the company charges only for the cost of replacement parts. Service personnel will conduct regular user follow-ups (quarterly) to maintain the equipment. If cumulative downtime due to malfunctions during the warranty period reaches five days, the warranty period will be extended by the accumulated downtime.

