

CPV-DH Series

Campro Precision Machinery Co., Ltd.

No. 12, Jingke 1st Road, Nantun District,
Taichung City 40852



Campro Precision Machinery (Jiaxing) Co., Ltd.

No.429 Yunhai Road, Jiaxing City,
Zhejiang Province

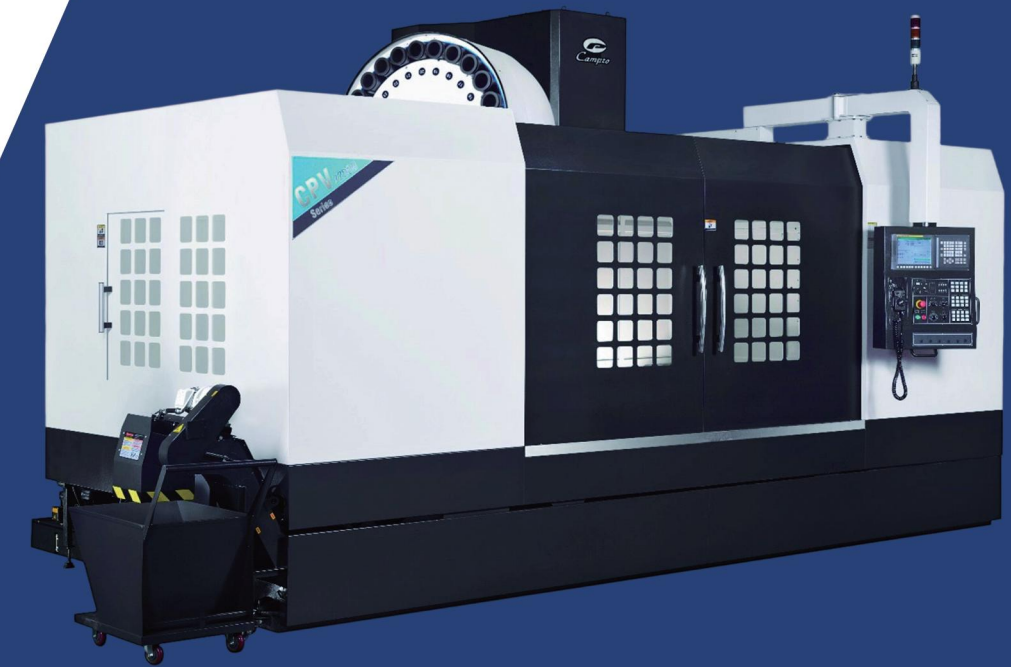


General Agency

Shanghai Zopo Intelligent Equipment Co.,Ltd

9 Floor, Building 1, Sinomach Group Campus,
No.778 Jinji Road, Pudong New Area, Shanghai
P.O: 201206, China
TEL: 86-021-68360398
E-mail: neo.wang@shanghaizopo.com

- Photos in this document may include special attachments; actual appearance may vary slightly depending on specifications.
- The content of this document is subject to change due to product improvements without prior notice.
- For any inquiries regarding the content of this document, please contact Campro' s Sales Department.



CE ISO 9001



Campro

www.shanghaizopo.com

Company Profile



Established in 2003, Campro has been actively engaged in the CNC equipment industry for over two decades. As a national high-tech enterprise, the company consistently prioritizes technological innovation as its core driver, focusing on building an integrated high-end equipment ecosystem that combines independent R&D, intelligent manufacturing, and service solutions. Its products and services mainly focus on high-end industries such as new energy vehicles \ aerospace \ semiconductors and ships, which effectively promote customers to achieve industrial upgrading and efficiency improvement.

Looking ahead, the company will uphold its core values of "integrity-driven innovation and excellence through dedication" actively aligning with national strategies for high-end equipment development. By leveraging its exceptional product performance and service capabilities, Campro aims to propel the domestic manufacturing industry toward high-quality and intelligent advancement, striving to establish itself as a benchmark enterprise in the CNC equipment sector.



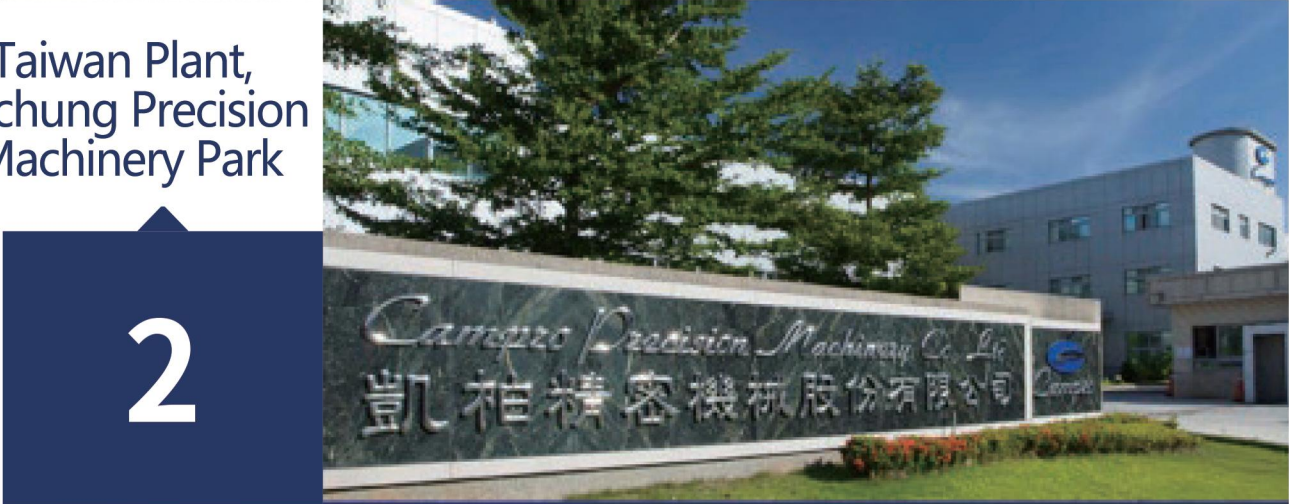
>> Cross Strait research and development, production, and global synchronized sales



1

Campro Precision Machinery (Jiaxing) Co., Ltd.

Taiwan Plant, Taichung Precision Machinery Park



2



3

Pennsylvania Bethlehem

900DH/1100DH

CPV-DH Series

Two linear guides & One box ways
(industry model) vertical machining center



- Assist clients in successfully conducting batch processing of components.

A vertical machining center that meets production efficiency, processing quality, and operability in all aspects. Fully prepared for mass production and automated layout.

Parameter List

| Content | unit | CPV-900DH | CPV-1100DH |
|---|---------|-----------------------|-----------------------|
| Travel | | | |
| X-axis travel | mm | 900 | 1100 |
| Y-axis travel | mm | 560 | 560 |
| z-axis travel | mm | 560 | 560 |
| Distance between two spindles | mm | 400 | 400 |
| Distance from spindle nose to table | mm | 90-650 | 90-650 |
| Distance from spindle center to column rail surface | mm | 630 | 630 |
| Table | | | |
| Table area | mm | 1000x550 | 1200x550 |
| Maximum table load | kg | 600 | 700 |
| Spindle | | | |
| Maximum spindle speed | rpm | 10000 | 10000 |
| Spindle taper | | NO.40 | NO.40 |
| Spindle bearing inner diameter | mm | Ø 70 | Ø 70 |
| Motor | | | |
| Spindle motor power | kW | 11/15 | 11/15 |
| ATC device | | | |
| Tool holder type | type | BT40 | BT40 |
| Tool storage capacity | pcs. | 24 (30) | 24 (30) |
| The maximum diameter of the tool < is less than the specified knife > | mm | Ø 80 | Ø 80 |
| Maximum diameter of the tool < No corresponding Tando > | mm | Ø 150 | Ø 150 |
| Maximum tool length | mm | 250 | 250 |
| Maximum tool weight | kg | 7 | 7 |
| Tool selection method | | Random storage method | Random storage method |
| Tool change time < tool to tool > | sec. | 2.5 | 2.5 |
| Tool change time < point to point > | sec. | 5.0 | 5.0 |
| Feed | | | |
| Fast feeding <x/y/z> | m/min. | 36/36/24 | 36/36/24 |
| Screw diameter <x/y/z> | mm | Ø 40/ Ø 40/ Ø 40 | Ø 40/ Ø 40/ Ø 40 |
| Rail specification<x/y/z> | | #35/#45/ Hard rail | #35/#45/ Hard rail |
| Cutting feed | mm/min. | 10000 | 10000 |
| Machine dimensions | | | |
| Machine height | mm | 2976 | 2976 |
| Area < Width × Depth > | mm | 3644×3783 | 3964×3783 |
| Machine weigh | kg | 7500 | 7800 |

- Maximum spindle speed: The maximum speed is sometimes limited by the fixtures and tools used.
- Spindle bearing inner diameter: Data is based on the maximum spindle speed of 10,000[12,000]rpm models.
- When the double-contact specification is selected, double-contact tools cannot be used with other types of tools.
- Machine dimensions: Actual values may vary from the catalog due to differences in optional configurations and peripheral equipment.

Production Technical Capabilities

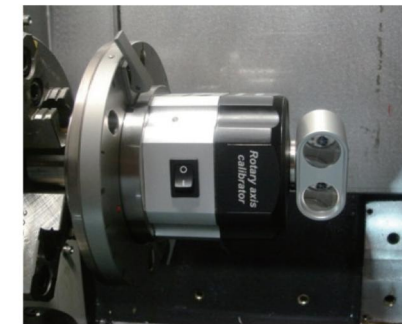


Quality Control Center



Industry-leading machine tools ensure machining precision

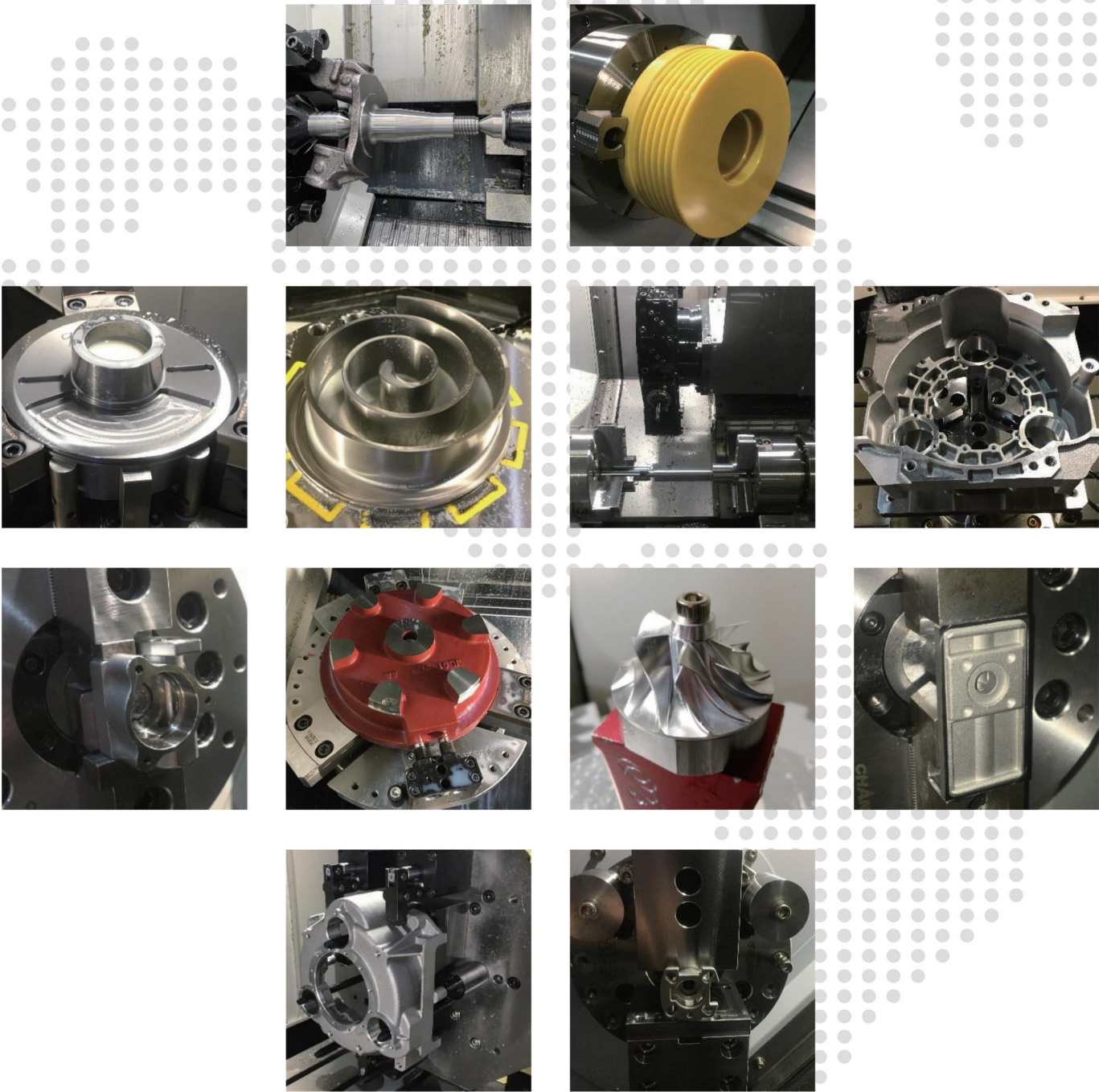
Not available



Precision measurement equipment and meticulous inspection processes ensure product quality

Automated Lines and Turnkey Cases

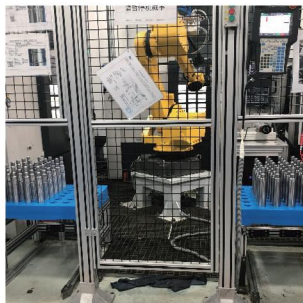
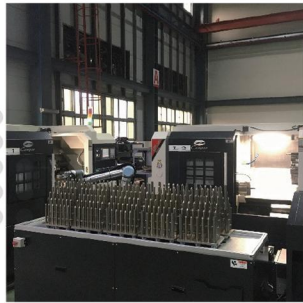
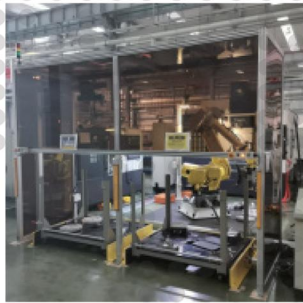
Application Delivery Capability - Turnkey Experience



Application Delivery Capability - Turnkey Experience



Application Delivery Capability - Automated
Line Delivery Experience



After-Sales Service

The company uses its Jiaxing factory as the inland service headquarters, with an after-sales team totaling approximately 30 people. Offices are established in North China (Beijing), Central China (Wuhan), South China (Guangzhou), Southwest China (Chongqing), Northwest China (Xi' an), and East China (Qingdao). These offices stock nearly 100,000 yuan worth of routine machine parts, fully ensuring the timeliness and effectiveness of after-sales services.

After-Sales Team
About 30 people

Regular spare parts for the office,
nearly 100000 yuan

Our after-sales commitment: A 12-month warranty for the entire machine and an 18-month warranty for the system, calculated from the acceptance date of Kaibo Precision Machinery equipment purchase. Any malfunctions caused by machine quality

Even after the warranty expires, the company charges only for the cost of replacement parts. Service personnel will conduct regular user follow-ups (quarterly) to maintain the equipment. If cumulative downtime due to malfunctions during the warranty period reaches five days, the warranty period will be extended by the accumulated downtime.

