

Campro Precision Machinery Co., Ltd.

No. 12, Jingke 1st Road, Nantun District,  
Taichung City 40852



General Agency

Shanghai Zopo Intelligent Equipment Co.,Ltd

9 Floor, Building 1, Sinomach Group Campus,  
No.778 Jinji Road, Pudong New Area, Shanghai  
P.O: 201206, China  
TEL: 86-021-68360398  
E-mail: neo.wang@shanghaizopo.com

Campro Precision Machinery (Jiaxing)  
Co., Ltd.

No.429 Yunhai Road, Jiaxing City,  
Zhejiang Province



# NT Series



- Photos in this document may include special attachments; actual appearance may vary slightly depending on specifications.
- The content of this document is subject to change due to product improvements without prior notice.
- For any inquiries regarding the content of this document, please contact Campro' s Sales Department.

CE ISO 9001 TD09005D



Campro

www.shanghaizopo.com



# Company Profile



Established in 2003, Campro has been actively engaged in the CNC equipment industry for over two decades. As a national high-tech enterprise, the company consistently prioritizes technological innovation as its core driver, focusing on building an integrated high-end equipment ecosystem that combines independent R&D, intelligent manufacturing, and service solutions. Its products and services mainly focus on high-end industries such as new energy vehicles \ aerospace \ semiconductors and ships, which effectively promote customers to achieve industrial upgrading and efficiency improvement.

Looking ahead, the company will uphold its core values of "integrity-driven innovation and excellence through dedication" actively aligning with national strategies for high-end equipment development. By leveraging its exceptional product performance and service capabilities, Campro aims to propel the domestic manufacturing industry toward high-quality and intelligent advancement, striving to establish itself as a benchmark enterprise in the CNC equipment sector.



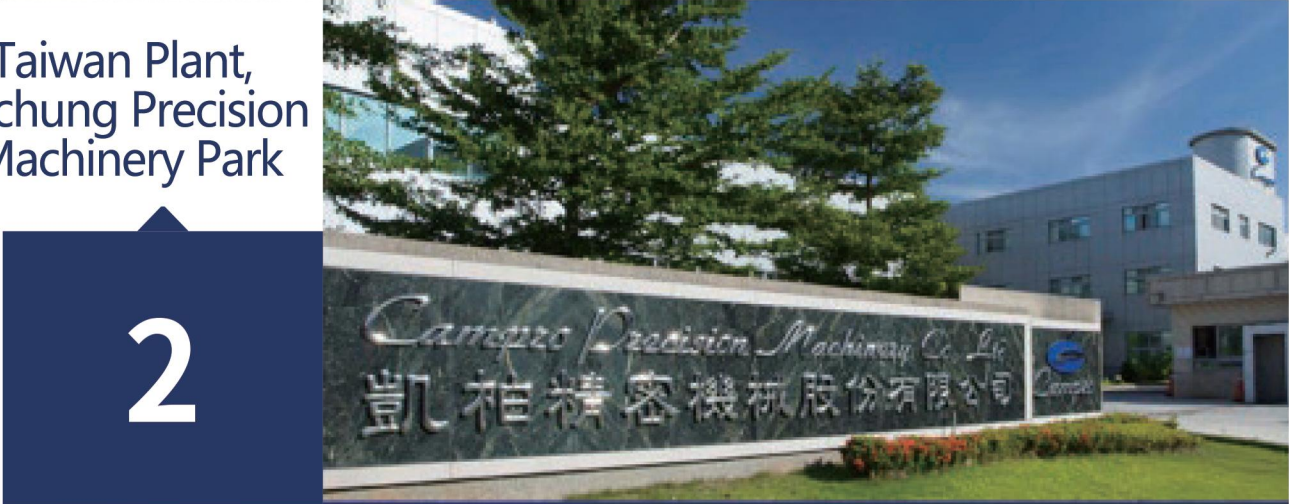
>> Cross Strait research and development, production, and global synchronized sales



1

Campro Precision Machinery (Jiaxing) Co., Ltd.

Taiwan Plant, Taichung Precision Machinery Park



2



3

Pennsylvania Bethlehem



208/208M/208SM/208Y/208SY

NT Series

NT series Turning / Turn-mill Complex Machine



- M C-axis paired with gravity knife tower
- Y C/Y axis with gravity knife tower
- SY C/Y axis paired with a gravity knife tower and subordinate spindle.

- High rigidity, high efficiency hard rail lathes are suitable for heavy cutting processing needs.

The NT series uses digital analysis to create the best structural forms alongside quality engineering verification to achieve optimal design dimensions. Its excellent reliability demonstrates an outstanding cutting removal rate. To meet the needs of heavy cutting processors, the base adopts a reinforced rib structure and a spindle thermal symmetry design, providing heavy cutting capabilities while maintaining long-term optimal precision performance.

The NT series can be equipped with C-axis, powered tool turret, sub-spindle, and Y-axis, making it a turning-milling composite machine that allows for the quick completion of complex turning and milling actions on the same machine.

Parameter List

Content	unit	NT-208	NT-208M	NT-208SM	NT-208Y	NT-208SY
Machining Range						
Max. Swing Over Bed	mm	Ø 580	Ø 580	Ø 660	Ø 660	Ø 660
Max. Swing Over Saddle	mm	Ø 390	Ø 390	Ø 460	Ø 460	Ø 460
Max. Machining Length	mm	550	550	490(900)	545	545
Max. Machining Diameter	mm	Ø 420	Ø 400	Ø 380	Ø 330	Ø 330
Travel						
X-Axis Travel	mm	210+20	210+20	190+10	200+20	200+20
Z-Axis Travel	mm	570	570	590(1000)	630	630
Y-Axis Travel	mim	-	-	-	100(±50)	100(±50)
Rapid Traverse (X/Z)/(Y) m/min.		(20/24)/-	(20/24)/-	(20/24)/-	(20/24)/(10)	(20/24)/(10)
Spindle						
Spindle Nose	type	A2-6	A2-6	A2-6	A2-6	A2-6
Hydraulic Chuck	inch	8	8	8	8	8
Spindle Draw Tube Bore	mm	Ø 52	Ø 52	Ø 52	Ø 52	Ø 52
Spindle Motor	kW(HP)	11/15(20)	11/15(20)	11/15(20)	11/15(20)	11/15(20)
Spindle Speed	rpm	4200	4200	4200	4200	4200
C-Axis Indexing Accuracy deg		-	0.001°	0.001°	0.001°	0.001°
Sub-Spindle						
Spindle Nose	type	-	-	A2-5	-	A2-5
Hydraulic Chuck	inch	-	-	6	-	6
Spindle Motor	kW	-	-	5.5/7.5(10)	-	5.5/7.5(10)
Spindle Speed	rpm	-	-	5000	-	5000
Dota						
Dota form	type	Hydraulic	Servo Power	Servo Power	Servo Power	Servo Power
Number of Tool Stations	Nos.	10-Station	12-Station	12-Station	12-Station	12-Station
Tool Holder Size	mm	25/ Ø 40	25/ Ø 40 (BMT-55)	25/ Ø 40 (BMT-55)	25/ Ø 40 (BMT-55)	25/ Ø 40 (BMT-55)
Max. Speed	rpm	-	5000	5000	5000	5000
Tailstock						
Tailstock Spindle Diameter	mm	Ø 80	Ø 80	-	Ø 80	-
Spindle Travel	mm	120	120	-	120	-
Morse Taper	type	MT-#4	MT-#4	-	MT-#4	-
Others						
Footprint (W x D x H)	mm	3839×1950×1785	3839×1950×1785	4254×2256×1842	4254×2141×2381	4254x2141×2381
Machine Weight	kg	4200	4200	4700	4700	4700
Power Capacity	KVA	20	30	40	40	40

Maximum spindle speed: The maximum speed may sometimes be limited by the fixtures and tools used.

Actual values for power supply, air pressure source, machine weight, and dimensions may vary from the above figures due to optional configurations and peripheral equipment.





## Production Technical Capabilities

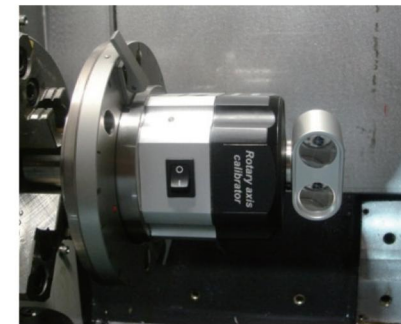


## Quality Control Center



Industry-leading machine tools ensure machining precision

Not available

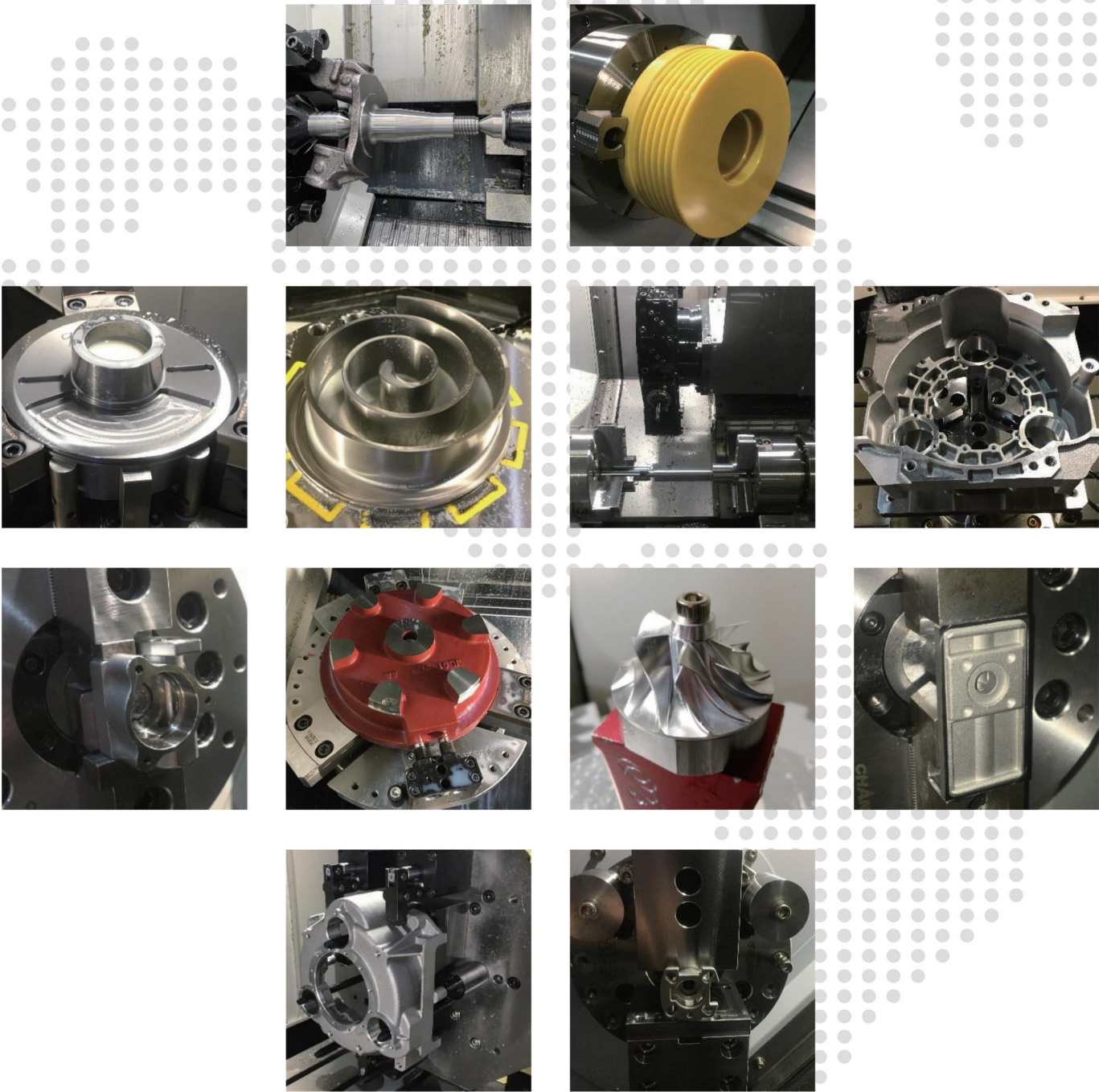


Precision measurement equipment and meticulous inspection processes ensure product quality



# Automated Lines and Turnkey Cases

Application Delivery Capability - Turnkey Experience

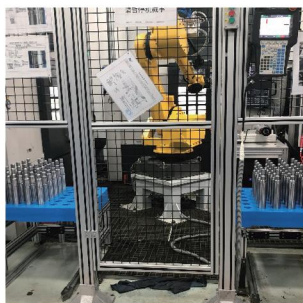
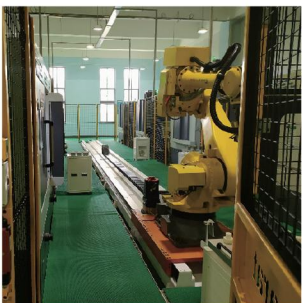
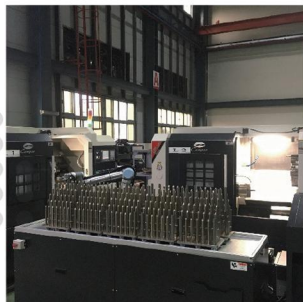


# Application Delivery Capability - Turnkey Experience





Application Delivery Capability - Automated  
Line Delivery Experience





# After-Sales Service

The company uses its Jiaxing factory as the inland service headquarters, with an after-sales team totaling approximately 30 people. Offices are established in North China (Beijing), Central China (Wuhan), South China (Guangzhou), Southwest China (Chongqing), Northwest China (Xi' an), and East China (Qingdao). These offices stock nearly 100,000 yuan worth of routine machine parts, fully ensuring the timeliness and effectiveness of after-sales services.

After-Sales Team  
About 30 people

Regular spare parts for the office,  
nearly 100000 yuan

Our after-sales commitment: A 12-month warranty for the entire machine and an 18-month warranty for the system, calculated from the acceptance date of Kaibo Precision Machinery equipment purchase. Any malfunctions caused by machine quality

Even after the warranty expires, the company charges only for the cost of replacement parts. Service personnel will conduct regular user follow-ups (quarterly) to maintain the equipment. If cumulative downtime due to malfunctions during the warranty period reaches five days, the warranty period will be extended by the accumulated downtime.

